



April 2025

KEY FIGURES ON FORCIBLY DISPLACED PERSONS

1, 917, 481

Total

1, 366, 355

Refugees

7, 927

Asylum seekers

225, 689

Internally displaced persons (Lake)

317, 510*

Returned migrants(Lake)

Others keys figures

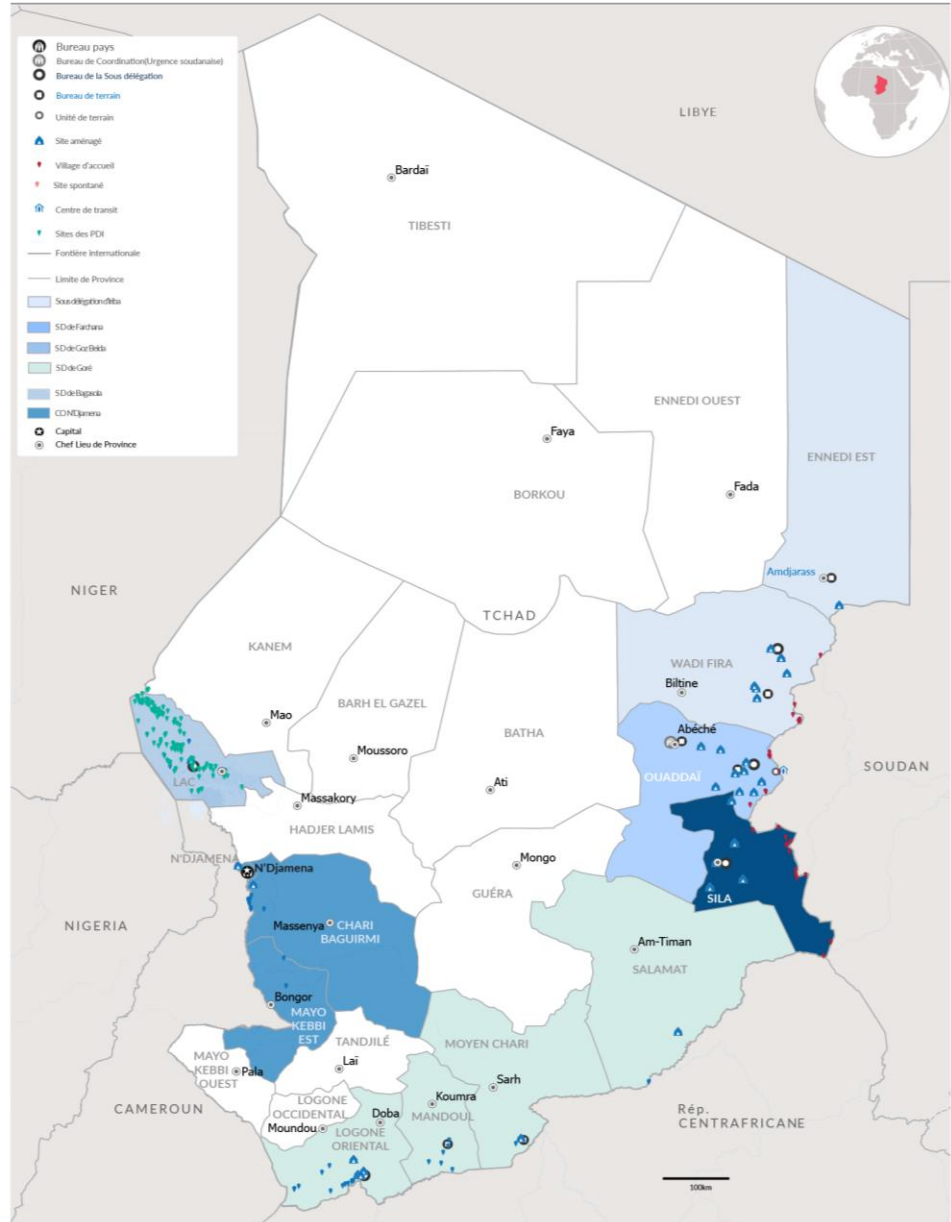
17, 708

Cameroonian refugees assisted for voluntary repatriation

779, 584

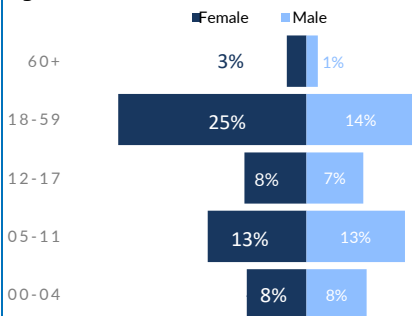
New arrivals from Sudan since April 2023

* Returned migrants at risk of statelessness from: Niger, CAR, and Sudan.

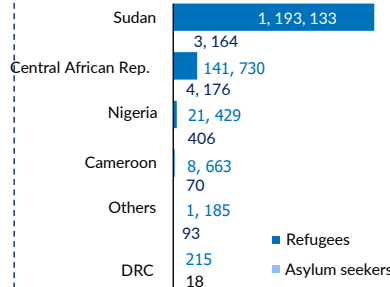


REFUGEES AND ASYLUM SEEKERS

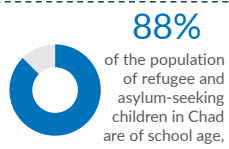
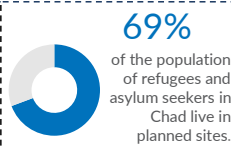
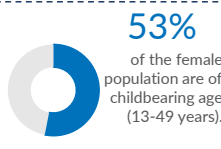
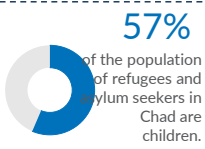
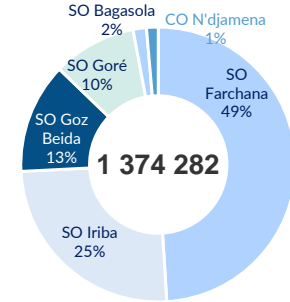
Age Cohort



By Country of Origin



By Sub Office



Refugees



1, 374, 282

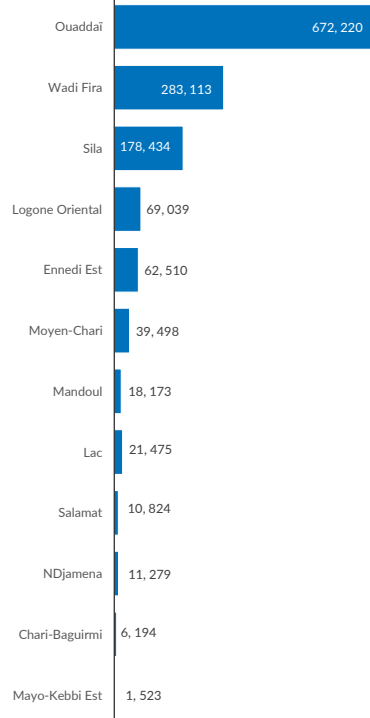
INDIVIDUALS



332, 708

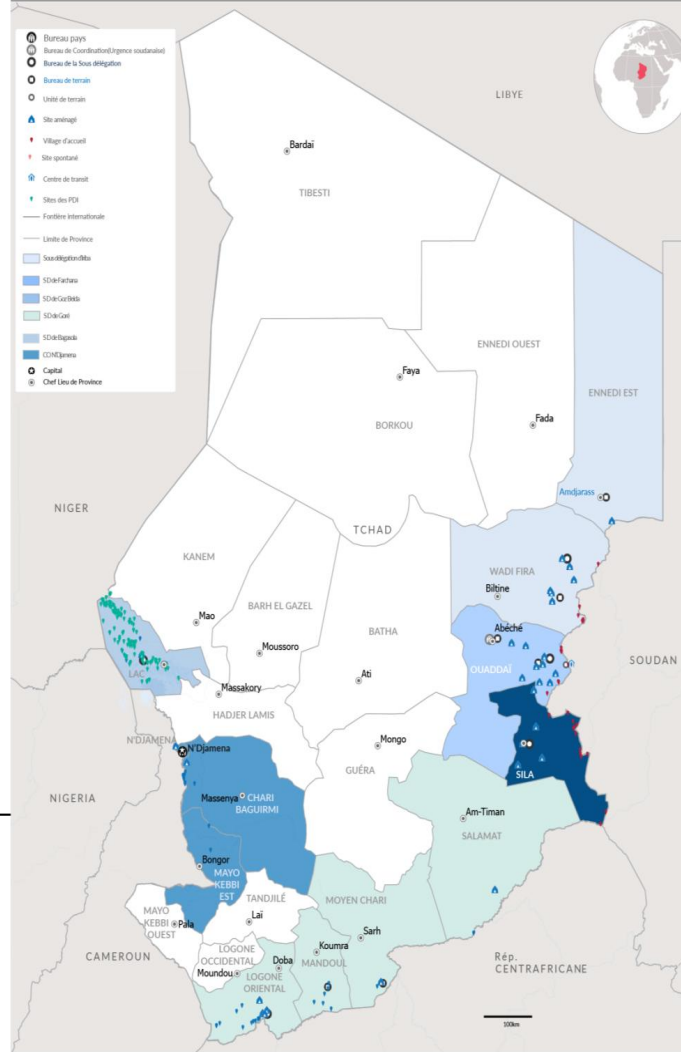
HOUSEHOLDS

By Province



SO Bagasola	
21,475	
Dar es Salam*	18,331
Bol	1,600
NGouboua	513
Kiskawa	438
Liwa	340
Tchoukoutalia	197
Kiskra	0
Autres	56

BO N'Djamena	
18,996	
N'Djaména	11,279
Mayo-Kebbi Est	1,523
Chari-Baguirmi	6,194



Abeche Coordination Office
1, 196, 277

SO Iriba	345,623
Touloum*	56,590
Am Nabak*	33,845
Iridimi*	43,970
Border	10,081
FO Amdjarass	62,510
Oure Cassoni*	62,510
FO Guéréda	138,627
Mile*	60,830
Kounoungou*	28,840
Koursigue*	13,149
Border(Dar Tama)	35,808
SO Farchana	672,220
Farchana*	54,813
Aboutengué*	46,689
Metche*	41,989
Gaga*	39,033
Adre	238,626
Border(Ouaddaï)	26,934
FO Abeche	25,911
Kouchaguine- M.*	17,286
Abéché	8,625
FO Hadjer Hadid	198,225
Bredjing*	56,341
Alacha*	47,593
Treguine*	30,743
Arkoum*	50,313
Dougou*	13,235
SO Goz Beida	178,434
Goz Amir*	47,803
Zabout*	54,181
Djabal*	37,711
Kerfi	11,535
Border(Sila)	27,204
SO Gore	137,534
Belom*	26,339
Villages Moy, Chari	13,159
Villages Logone Or.	15,473
Dosseye*	15,476
Doholo*	14,687
Amboko*	12,250
Gondjé	11,153
Villages Moïssala	18,173
Moyo*	8,691
Villages Daha 1 & 2	2,133

Principales nationalités(Ref. & ASY)

1, 196, 297

SUDANESE

Essentially located in the 21 planned sites and 1 reception village in the East and in urban areas.

* Planned site

145, 906

CENTRAL AFRICANS

Located in the six camps, sites, and host villages in the South and in urban areas.

21, 835

NIGERIANS

Primarily located in the Dar Es Salam camp and host villages in the Lake Province as well as in urban areas.

8, 733

CAMEROONIANS

Mainly composed of populations who fled intercommunal clashes in the Logone and Chari department in Cameroon. They are located in the two camps around N'Djaména and on the banks of the Logone River.

1, 511

OTHER NATIONALITIES

Outside the major nationalities, there are individuals of various origins: Algeria, Benin, Burkina Faso, Burundi, Côte d'Ivoire, Republic of the Congo, Egypt, Eritrea, Ethiopia, Gabon, Libya, Mali, Islamic Republic of Iran, Rwanda, Senegal, Somalia, South Sudan, Palestine, Yemen.

KEY FIGURES ON THE SUDANESE CRISIS

779, 584 **409, 819**

New arrivals from Sudan 2023.

Sudanese refugees in Chad before the 2023 crisis.