



Food Security Dashboard

Uganda Refugee Response Plan (RRP) 2024 - 2025

Quarter 2
April - June

Quarter
Q2 2025

Overview of the sector and narrative

The Sector Overview:

The Food Security sector plays a pivotal role in advancing Sustainable Development Goal (SDG) 2.1 by improving access to nutritious food and promoting refugee self-reliance. The sector supports this effort by delivering General Food Assistance (GFA) to refugees across 13 settlements. Due to ongoing funding constraints, the implementation of refugee GFA ration cuts continued in April, affecting both new arrivals and settled refugees. The ration for new arrivals reduced from 100% to 60%, while the ration for refugees in Category one reduced from 60% to 40%. The ration for refugees in Category two remained unchanged from March, at 22%. In May, the food security sector implemented a resource-driven prioritization exercise that reduced the number of refugees receiving assistance from 1.6 million to 662,000. The prioritization exercise resulted in adjustments across Categories: the proportion of refugees in Category one, representing the most vulnerable, increased from 14% to 24%, Category two reduced from 82% to 13%, while Category three increased from 4% to 63%.

The Result Analysis:

In Quarter Two, the food security sector assisted over 1.5 million refugees with In-Kind (IK) food assistance and Cash-Based Transfers (CBT), compared to 1.4 million refugees served in Quarter One. Of those assisted, 70% received CBT while 30% received IK. A total of USD 8.1 million and 2,733 MT of food were distributed. Through collaborative efforts among various UN agencies, data collection for the 2025 Food Security and Nutrition Assessment (FSNA) was completed in June. Preliminary findings show a rapid deterioration in the food security and nutrition situation following the exclusion of one million refugees from GFA. Only 37% of households reported having acceptable food consumption scores, down from 50% in July 2024. Severe food insecurity has significantly worsened in 8 of the 13 refugee settlements and Refugee settlements now face 63% food insecurity compared to 29% in host communities. Report writing is ongoing, with the final report and Integrated Food Security Phase Classification (IPC) analysis expected in Quarter Three.

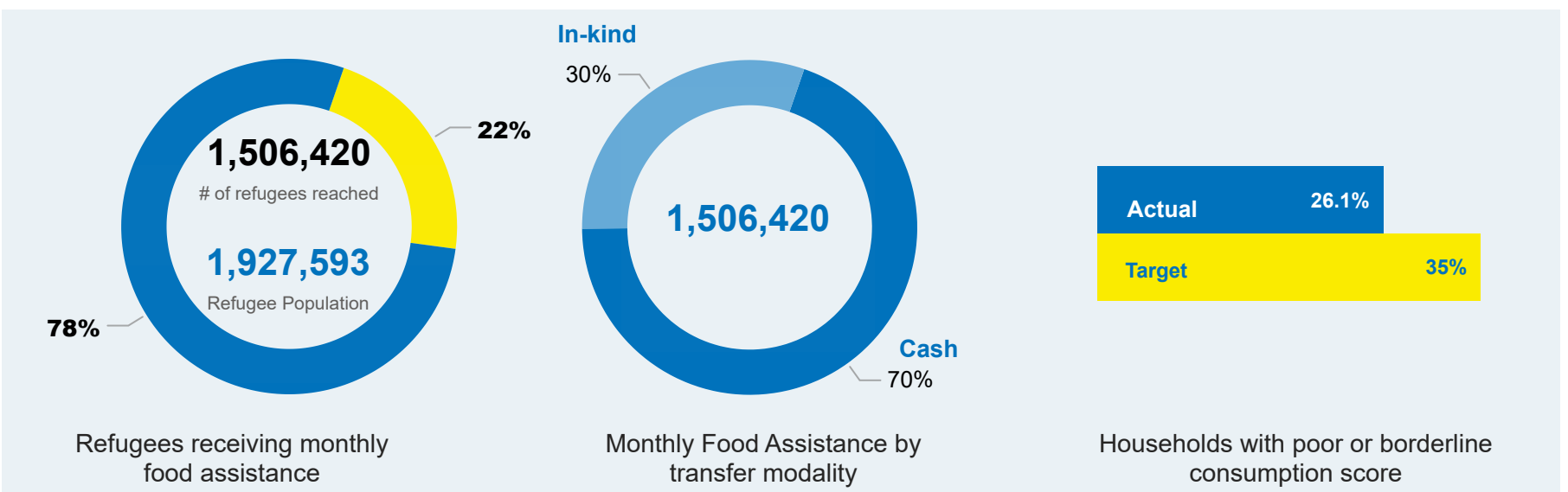
The Key Challenges/Opportunities:

The reduction in GFA rations has decreased household food availability, potentially increasing food insecurity and triggering coping mechanisms among refugees. Simultaneously, the prioritization exercise resulted in the exclusion of approximately one million refugees from assistance. These combined measures are expected to lead to deterioration in the food security and nutrition situation among refugees.

The Sector Priorities:

WFP will continue to advocate for additional funding to restore the recommended GFA ration levels and sustain assistance to refugees most at risk of food insecurity. Additionally, the digitization of CBT remains a priority, providing refugees with the flexibility to purchase nutritious commodities while enhancing operational efficiency and promoting financial inclusion. Through the SRM, WFP continues to build the economic capacity of refugees by supporting livelihood enhancement initiatives. These efforts aim to equip refugees with essential skills and knowledge to boost their economic potential and improve household income. So far, 35,455 refugees are on the pathway towards self-reliance.

Key Indicators





Food Security Dashboard

Uganda Refugee Response Plan (RRP) 2024 - 2025

Quarter 2
April - June

Quarter
Q2 2025

Key Indicators

Outcome: Refugees and asylum seekers have improved access to adequate nutritious food

Indicator	Actual	Target/Standard ('25)	Actual	Gap
Refugees receiving in-kind food assistance				
- Congolese Refugees	79,179	206,176	38%	62%
- South Sudanese Refugees	373,606	386,484	97%	
- Other refugees	3,350	55,447	94%	

Refugees receiving food assistance through cash transfers

- Congolese Refugees	403,668	309,261	>100%
- South Sudanese Refugees	455,503	579,727	79% 21%
- Other refugees	145,659	83,171	>100%

Outcome: Refugees and asylum seekers have improved access to adequate nutritious food

Proportion of HHs with insufficient food consumption (SUM poor and borderline food Consumption Score)

- Congolese Refugees	41	35	>100%
- South Sudanese Refugees	58	35	>100%
- Other refugees	31	35	90% 10%

Outcome: Reduced Prevalence of Acute and Chronic Malnutrition among Refugees and Asylum Seekers in Uganda

Moderate Acute Malnutrition Treatment Recovery Rate

- Congolese Refugees	56	85	56% 29%
- South Sudanese Refugees	85	85	>100%
- Other refugees	91	85	>100%

Funding



163M

Total Requirement



Received 13%

Gap 87%



Food Security Dashboard

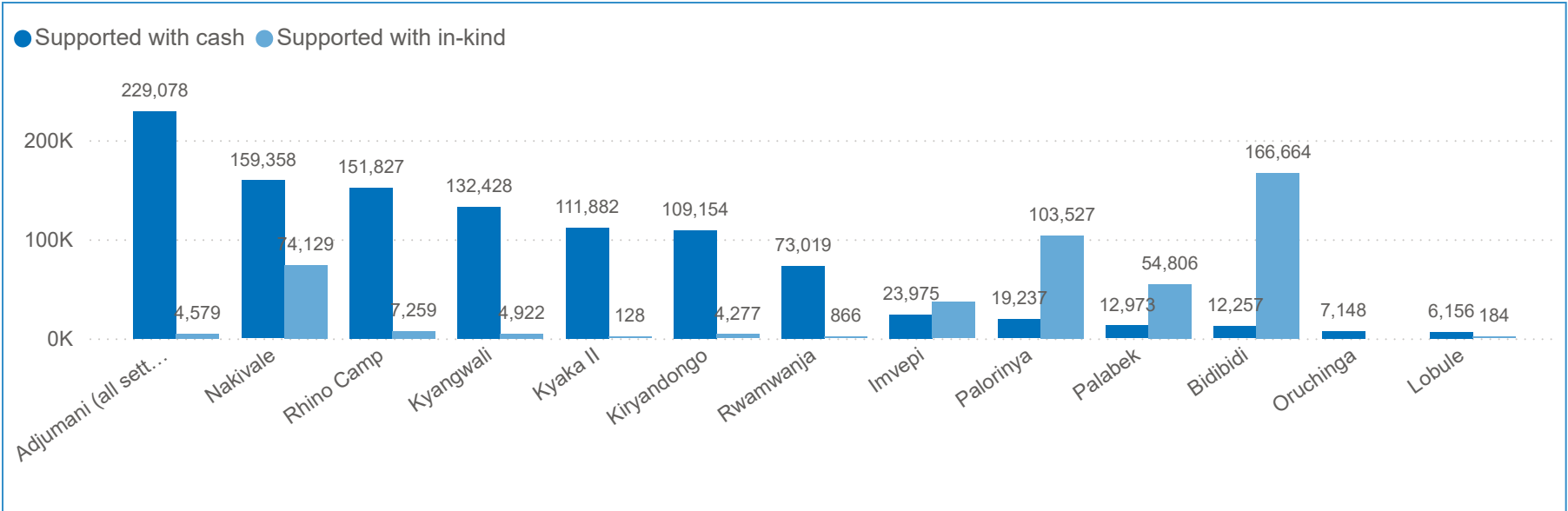
Uganda Refugee Response Plan (RRP) 2024 - 2025

Quarter 2
April - June

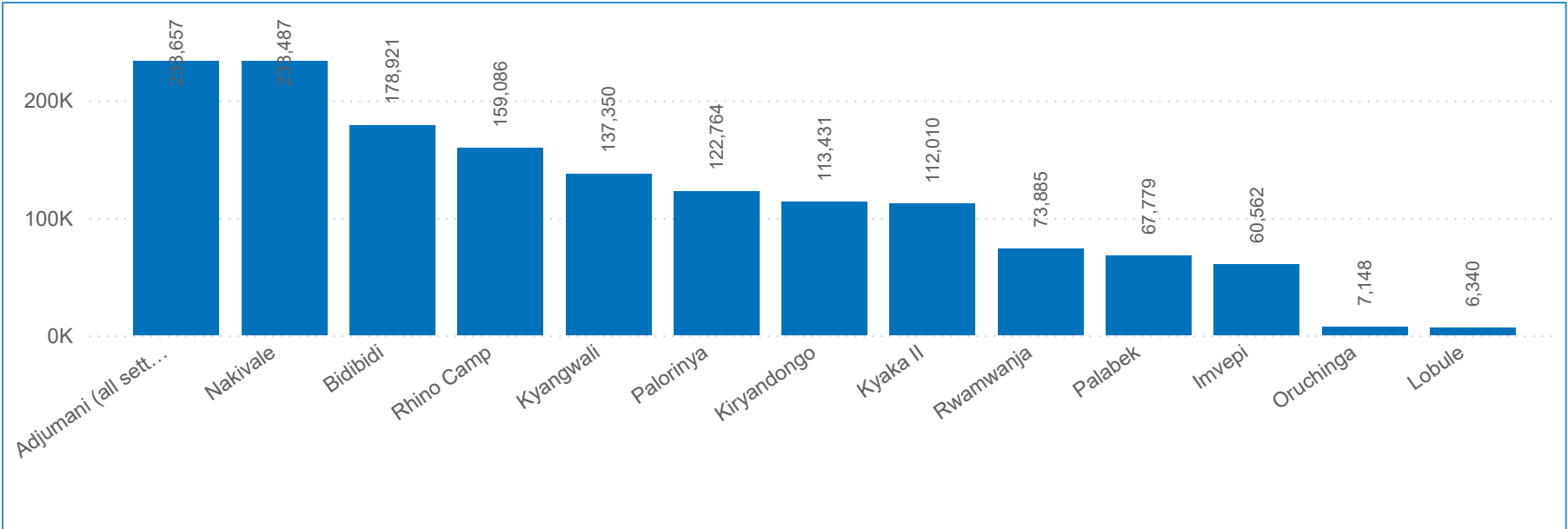
Quarter
Q2 2025

Key Indicator comparison by settlement

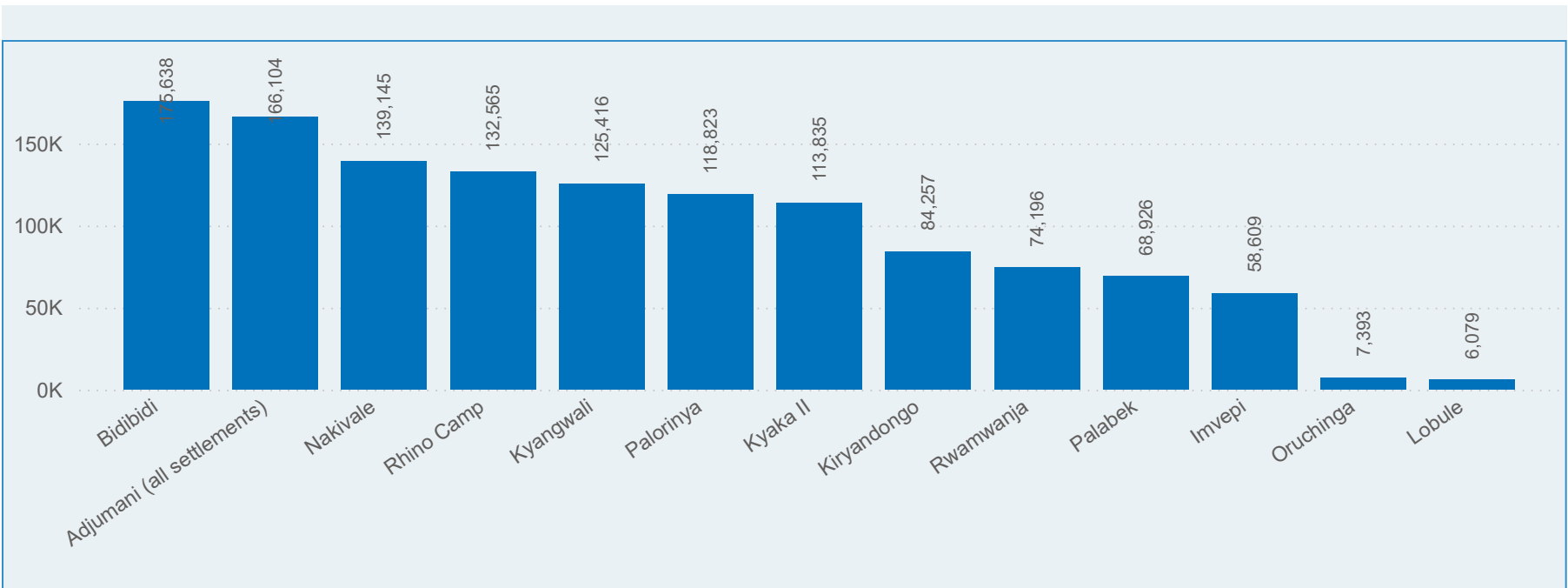
Refugees receiving food assistance | In-kind vs Cash transfers | Data as of Q2 2025



Refugees receiving food assistance | Total individuals supported | Settlement Comparison | Q2 2025



Refugees receiving food assistance | Total individuals supported | Settlement Comparison | Q2 2024





Food Security Dashboard

Uganda Refugee Response Plan (RRP) 2024 - 2025

Quarter 2
April - June

Quarter
Q2 2025

Partner Reporting

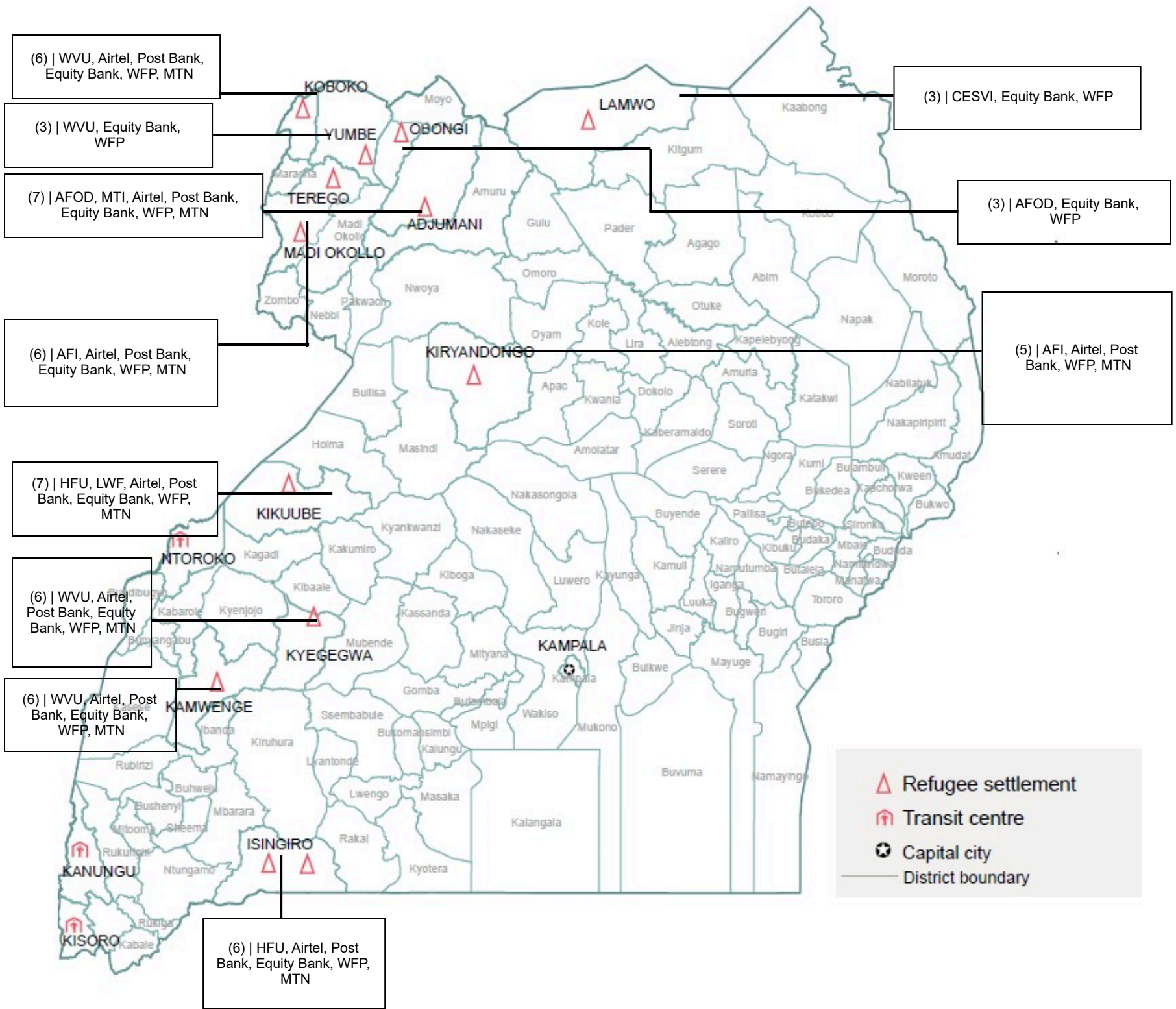
Partner	Partner	Partner
AFI	Equity Bank	MTN
AFOD	HFU	Post Bank
Airtel	LWF	WFP
CESVI	MTI	WVU



12
Partners

6
INGOs

5
NNGOs





Food Security Dashboard

Uganda Refugee Response Plan (RRP) 2024 - 2025

Quarter 2
April - June

Quarter
Q2 2025

Operational Presence

District

All

Settlement

All

Partner Type

All

Partner

All

Partners by District and Settlement

District	Settlement	Partner Type	Partner
Adjumani	Adjumani	INGO	Airtel
Adjumani	Adjumani	INGO	Equity Bank
Adjumani	Adjumani	INGO	MTI
Isingiro	Nakivale	INGO	Airtel
Isingiro	Nakivale	INGO	Equity Bank
Isingiro	Oruchinga	INGO	Airtel
Isingiro	Oruchinga	INGO	Equity Bank
Kamwenge	Rwamwanja	INGO	Airtel
Kamwenge	Rwamwanja	INGO	Equity Bank
Kamwenge	Rwamwanja	INGO	WVU
Kikuube	Kyangwali	INGO	Airtel
Kikuube	Kyangwali	INGO	Equity Bank
Kikuube	Kyangwali	INGO	LWF
Kiryandongo	Kiryandongo	INGO	Airtel
Koboko	Lobule	INGO	Airtel
Koboko	Lobule	INGO	Equity Bank
Koboko	Lobule	INGO	WVU
Kyegegwa	Kyaka II, Uganda	INGO	Airtel

No of Partners by District

