



**LEBANON
Response Plan**

LRP Partners Update Meeting

February 13, 2026



Opening Remarks

LRP Co-Chairs

Agenda

1. Welcome New Partners!

2. Lebanon Response Plan Overview

- Coordination of the Lebanon Response Plan
- Mainstreaming Across Sectors

3. Information Management & Reporting

- Tools & Products
- Reporting & Knowledge Management
- Refresher Training

4. Q&A



Welcome New Partners!

Jana Nasr, Senior Inter-Agency Coordination Assistant (UNHCR)

Welcome New Partners!

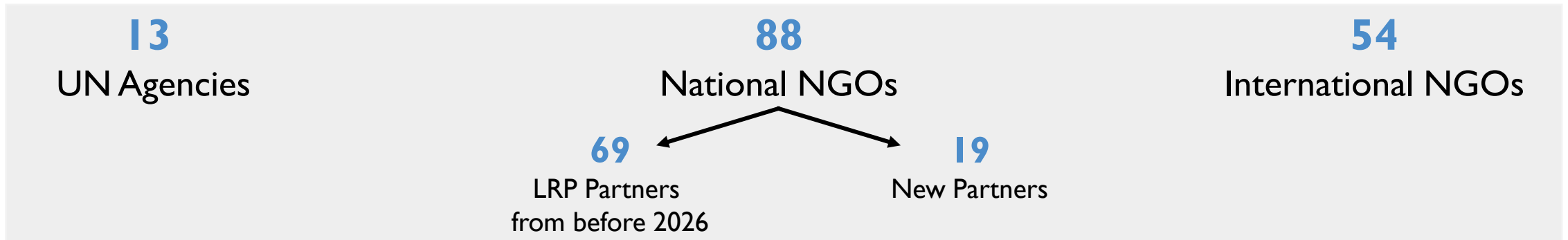
- Alpha
- Mosaic-Mena
- Taawon
- AFDC
- MERATH Lebanon
- Banin Charity Association
- National Association for Local Development (NALD)
- Aajwad education
- Service de L' enfant au Foyer (SEF)
- Aid and Care for Development (ACD)
- I'm possible
- Onsur Lebanon
- Will Association
- Social Urjuwan
- Al Fares Association
- Beit El Hanane (Home of Tenderness)
- Keen International
- Bqosta Association for Social Development
- WHH-Hadatha

Welcome New Partners!

Partners Disaggregation

 **155** Partners

By Organization

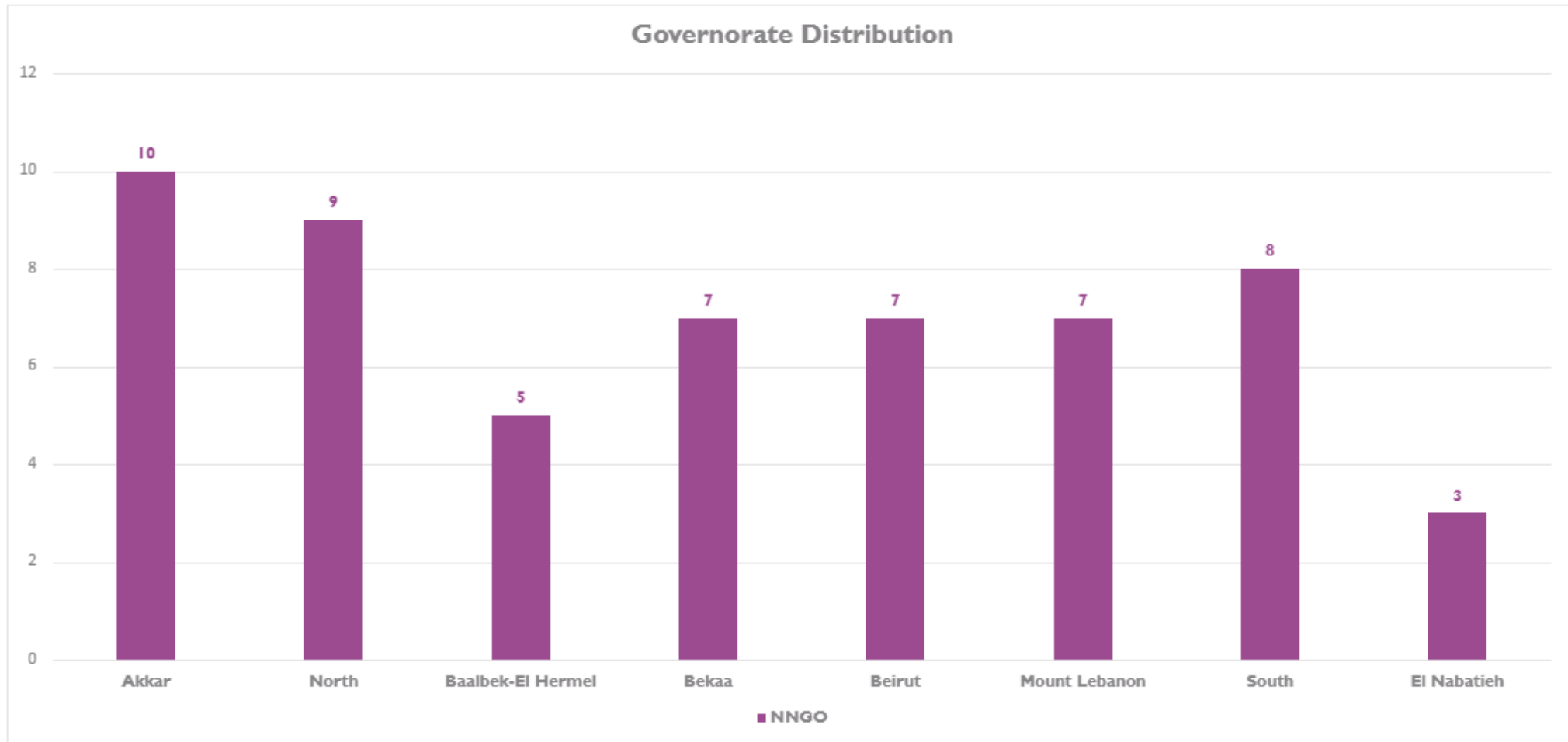


By Sector



Welcome New Partners!

New Partners Disaggregation



Welcome New Partners!

Who is an LRP Partner?

Three categories:

- **Partners implementing directly under the LRP.**
Partner name listed in the LRP publication, 3Ws, sector dashboards / activity reports
- **Partners implementing activities for an organization (ex: UN) who are expressing interest under the LRP “Implementing Partners”.**
Mentioned on 3Ws, sector dashboards / activity reports
- **Partners who participate in the working groups and align their activities to the LRP**
Mentioned on 3Ws, sector dashboards / activity reports

Welcome New Partners!

What does it mean to be an LRP Partner?

- Complementarity of activities / actions.
- Improved targeting.
- More visibility for your organization → increases opportunities to get funding
 - LRP Appeal will be published on global Financial Tracking System (FTS).
 - Your organization mentioned in LRP publications (report, dashboards, sector updates).
 - Letter of Confirmation (upon request) for you to submit to Donors, Ministries, etc.
- Capacity building & training opportunities (reporting, tensions, PSEA, environment, etc.)

Important Note:

Being an LRP partner does not automatically secure any funding – it is still up to your organization to fundraise.



Lebanon Response Plan Overview

Jana Nasr, Senior Inter-Agency Coordination Assistant (UNHCR)

Lebanon Response Plan Overview

What is the Lebanon Response Plan?

- **Unified national response framework:** The LRP remains the joint Government - United Nations plan for addressing the needs of crisis-affected populations in Lebanon.
- **Inclusive of all population groups:** Continues to support vulnerable Lebanese, displaced Syrians, Palestinian Refugees from Syria (PRS), Palestine Refugees in Lebanon (PRL), migrants, post-2024 arrivals, and households internally displaced due to recent hostilities.
- **Return as a national priority:** The 2026 cycle reflects the Government's priority to facilitate the safe, dignified, and informed return of Syrians, with return-related activities anchored across relevant sectors and consolidated in a dedicated Return Chapter.
- **Extended planning cycle with a clarified scope:** Building on the 2024–2025 cycle, the LRP is extended to 2026 with a maintained focus on humanitarian and stabilization activities, bridging a transition to the upcoming Cooperation Framework.
- **Prioritization driven by life-saving needs:** LRP 2026 is highly prioritized to reflect urgent needs and resource constraints, while maintaining the ability of sectors to reach people at scale across all population groups.
- **2026 Shift - Advancing transition to Government ownership:** The 2026 cycle strengthens the shift towards national leadership (e.g. cash assistance through MoSA) with sectors increasingly aligning strategies, data systems, and response parameters with line ministries. This reflects a gradual, deliberate transition towards enhanced Government ownership.
- **Reinforced preparedness and contingency planning:** The LRP incorporates contingency measures to ensure readiness for foreseeable scenarios and to keep operational preparedness as sharp as possible. *However, the LRP budget covers only limited contingencies and does not accommodate large-scale emergencies beyond agreed thresholds.*

Lebanon Response Plan Overview

The LRP Falls under the Regional Refugee and Resilience Response Plan (3RP)



2026

3RP Regional
Strategic Overview

Consolidates response requirements for **Jordan, Lebanon, and Türkiye.**

Targets **3.65 million refugees, asylum seekers, and stateless persons** and **4.67 million host community members.**

2026 Total Requirements



\$2.74 Billion

Lebanon Response Plan Overview

Strategic Objectives



Provide immediate humanitarian assistance to vulnerable populations to ensure critical needs are met.



Ensure protection of the vulnerable populations.



Support service provision through national systems including national rapid response capacity



Reinforce Lebanon's economic, social, and environmental stability.

Lebanon Response Plan Overview

At a Glance

2026 Planning Figures













155 Appealing UN and NGO partners



Lebanon Response Plan Overview

At a Glance

Sectors	People Targeted	Vulnerable Lebanese	Displaced Syrians	PRL	PRS	Migrants	Others
 MPCA Chapter	998,253	150,000	695,500	84,477	15,376	48,000	4,900
 Education	584,844	279,441	265,556	35,614	3,734	500	0
 Food Security & Agriculture	851,000	460,000	391,000	<i>Under MPCA</i>	<i>Under MPCA</i>	<i>Under MPCA</i>	0
 Health	1,367,956	896,278	362,694	61,276	7,242	40,466	0
 Nutrition	679,149	517,607	136,132	16,908	2,143	6,359	0
 Livelihoods	72,000	63,000	8,500	300	200	0	0
 Protection, Child Protection, GBV	1,393,599	383,430	901,889	51,015	21,815	26,550	8,900
 Shelter	456,819	139,721	282,719	20,398	2,266	11,715	0
 Social Stability	2,804,119	1,295,23	1,120,000	201,136	23,655	164,097	0
 WaSH	2,200,166	1,444,658	657,451	61,987	5,534	30,536	0

Lebanon Response Plan Overview

How are the Sectors **Targeting** in 2026?



Socio-Economic / PMT

- Country-wide targeting
- Based on the Proxy Means Testing (PMT)
- Vulnerability thresholds
- Poverty scores based on SMEB and Household-level assessment data



Geographical

- Geographic areas where issues likely to be most prevalent.
- Including (but not limited to):
 - 332 vulnerable cadasters
 - Drought vulnerability map



Categorical

- Protection monitoring, GBVIMS
- Individual needs and known vulnerability of defined groups
- Common verifiable characteristics
- Higher risk

 **Cash Working Group**

 **Food Security & Agriculture**



WaSH



Shelter



Social Stability



Livelihoods



Health



Nutrition



Protection



Education



Livelihoods



Nutrition

Lebanon Response Plan Overview

Commitments

Guiding commitments for the LRP: *policies, strategies, approaches, and interventions*

- Sustainable Development Goals (SDGs)
- The Global Compact on Refugees (GCR)
- Humanitarian-Development-Peace Nexus (HDPN)
- Accountability to Affected Populations (AAP)
- Protection from Sexual Exploitation and Abuse (PSEA)
- Localization
- Government of Lebanon Sectoral Plans/Roadmaps

Lebanon Response Plan Overview

Principles

Principles governing the LRP framework and structure:

- Prioritization (in line with global practice for increasingly prioritized appeals)
- Collaborative planning for multiple years / linkages to UNSDCF
- Efficient Implementation and Coordination
- Strengthening area-based coordination
- Timely Information Sharing and Tracking (activities, funding, strengthening understanding of contribution to impact)
- Conflict sensitive approach

Lebanon Response Plan Overview

Planning & Prioritization

1. Evidence and feasibility drive all prioritization

Sector plans are built on severity analysis and funding gaps, ensuring resources target the most urgent needs and reflect what can realistically be delivered in the current environment.

2. Prioritization is guided by Government leadership and national systems

Sectors coordinate with MoSA and line ministries through area-based processes that elevate local priorities and gradually strengthen national ownership.

3. The LRP remains flexible to respond to a dynamic context

Cash-first approaches are applied where operationally feasible and markets are functioning, enabling affected people to exercise choice and meet diverse basic needs. Sectors continue to adapt to returns, new arrivals, and localized emergencies while focusing on the most vulnerable groups across all populations.

4. Strategic and protection principles anchor all sector choices

Sectors align with LRP objectives and cross-cutting commitments (including Protection, AAP, gender, and conflict sensitivity) while maintaining essential inter-sector linkages.

Sector prioritization in 2026 is evidence-driven, feasibility-based, and protection-centered, guided by a set of overarching principles coherent across all sectors, while allowing the flexibility required for sector-specific mandates, modalities, and operational realities.

Lebanon Response Plan Overview

Humanitarian Reset

- Merger of Basic Assistance (BA) Sector and Cash Working Group (CWG); while NFIs/CRIs to be moved and integrated under Shelter sector.
- Phase-out of the Energy Sector.
- Shift from Inter-Sector to Operational Coordination at Subnational level.

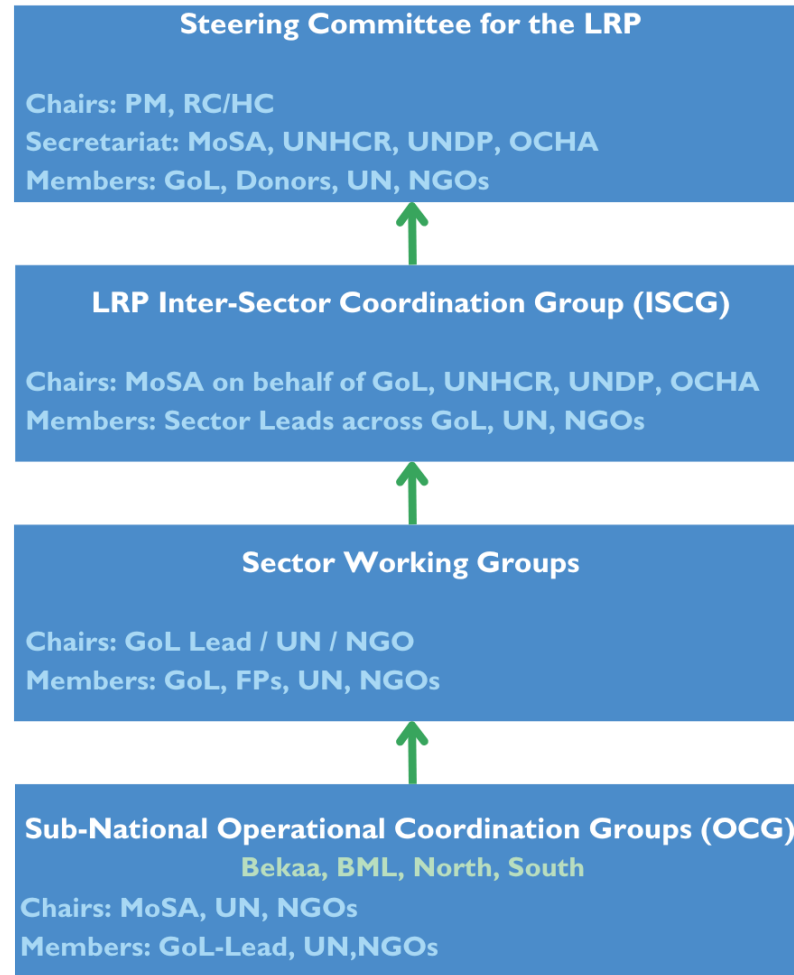


Coordination of the Lebanon Response Plan

Jana Nasr, Senior Inter-Agency Coordination Assistant (UNHCR)

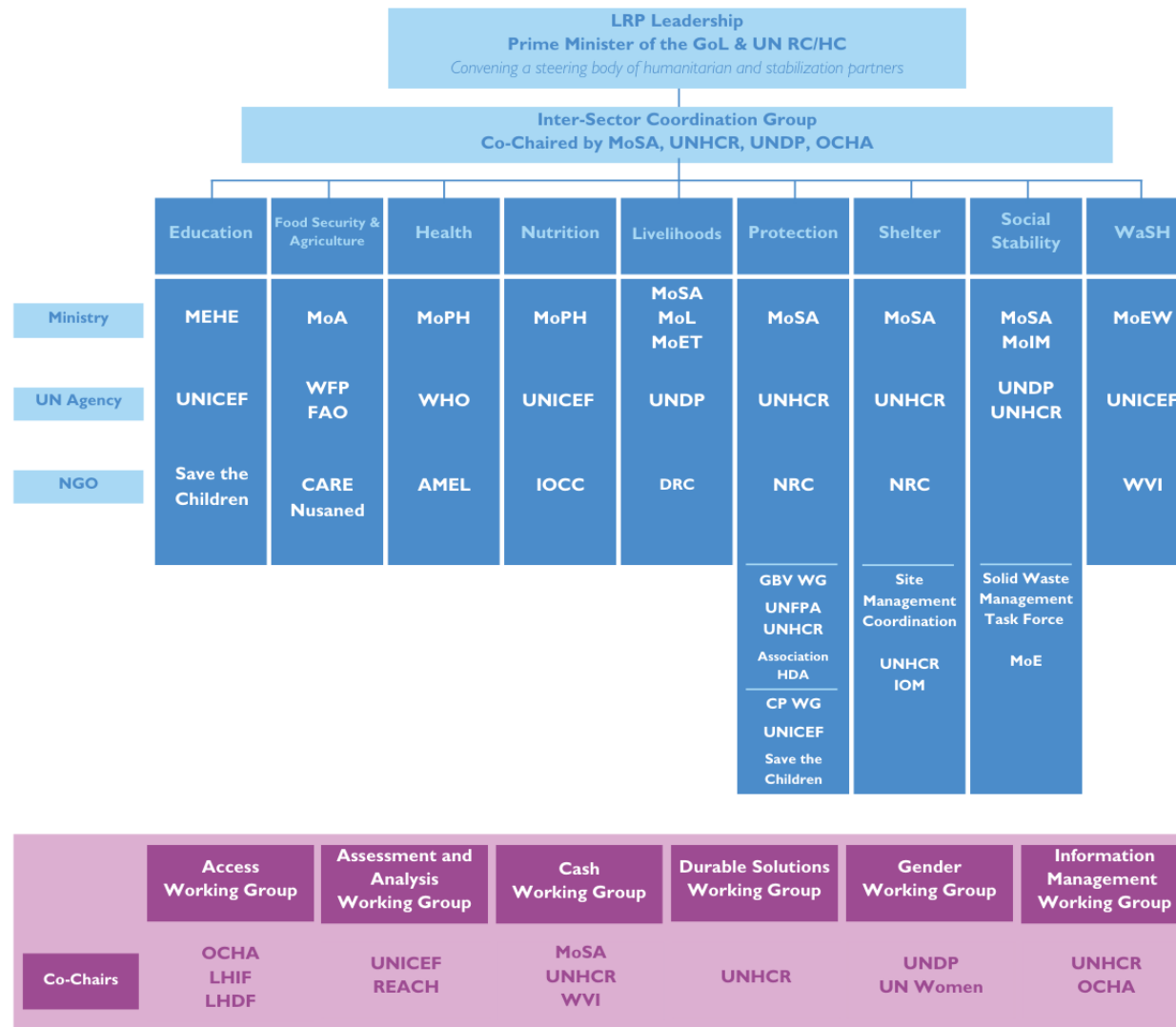
Coordination of the Lebanon Response Plan

Governance and Coordination Architecture – Endorsed by the Steering Committee




Coordination of the Lebanon Response Plan

Sector Coordination Structure



Coordination of the Lebanon Response Plan

Coordination & Meetings Schedule

 LRP Sectoral Coordination & Meeting Schedule 2026																
Inter-Sector Meetings					Information Management WG											
National ISCG Online 1 st Friday 10:00 LRP Partners Meeting Online Biannually, Friday at 10:00					North IS Tripoli/Qobayat 2 nd Tuesday 10:30-12:30		Bekaa – Baalbek El Hermel IS UNHCR Zahle Biweekly Tuesday 2:00-3:30		South IS UNDP Tyre 1 st Wednesday 12:00-1:30	Beirut – Mt. Lebanon IS UNHCR BML 1 st Wednesday 11:00-12:30		National UNHCR Bimonthly, last Wednesday at 10:00				
Sector Working Groups											Thematic Working Groups					
	Health	Nutrition	Food Safety & Security	Livelihoods	Protection	GBV Working Group	CP Working Group	Social Stability	Education	Shelter	W&SH					
NATIONAL	NHSWG meeting WHO Last Friday 9:00-11:00 Core Group Meeting MoPH (Quarterly / Ad-Hoc Basis)	Nutrition meeting Online Last Thursday 10:00-12:00	FSS WG meeting WFP 2 nd Tuesday 9:30-11:30 Core Group WFP 1 st Tuesday 9:00-10:00	LH WG meeting UNDP / MoSA 2 nd or 3 rd Thursday 14:00-16:00 Core Group Last Thursday 1:00-2:00	PWG meeting UNHCR 3 rd Tuesday 10:00-12:00 Core Group UNHCR 1 st Tuesday 10:00-12:00	GBV WG meeting UNHCR & Co-chaired by UNFPA 3 rd Wednesday 10:00-12:00 Core Group 1 st Wednesday 10:00-12:00	CP WG meeting UNICEF 3 rd Thursday 10:00-12:00 Core Group 1 st Thursday 10:00-12:00	SoSt WG meeting Online or In person at UNDP Last Tuesday 11:00-12:30 Core Group In person at UNDP 1 st Tuesday 11:00-12:30	EDU WG meeting Location TBD 4 th Thursday 12:00 Core Group 1 st & 3 rd Tuesday 11:00	Shelter WG meeting MoSA Last Friday 10:00-12:00	WASH WG meeting MoEW 1 st Thursday 10:00 Core Group Ad-Hoc Basis	Cash WG Online / Possibility In-Person 3 rd Thursday 10:00-12:00				
												DSWG UNHCR Quarterly				

Coordination of the Lebanon Response Plan

Coordination & Meetings Schedule

BEIRUT - MT_LEB	Ra2ees Al Maslaha Office Quarterly	Ad-Hoc Basis	WFP (every 2 months) Last Thursday 10:00-12:00	UNDP 1 st Thursday 10:00-11:00	Location TBD 4 th Thursday 10:30-1:30	Alternating Online / In-Person with venue TBC 1 st Thursday (monthly) 11:15-12:15	UNICEF (every 2 months) 4 th Wednesday 10:00	Ad-Hoc Basis	Ad-Hoc Basis	AAWG UNICEF / Hybrid 3 rd Thursday 14:00-15:30
BEKAA - BAALBECK-EL HERMEL	Ra2ees Al Maslaha Office Quarterly	Ad-Hoc Basis	WFP (every 2 months) Last Wednesday 11:00-1:00	Online or In Person (UNDP or UNHCR) 2 nd Wednesday from 12:00-1:00	Location TBD 2 nd Tuesday 11:30-1:30	Alternating Online / In-Person UNHCR or UNDP Zahleh 2 nd Wednesday (monthly) 11:00-12:00	UNHCR Last Tuesday 10:00	Ad-Hoc Basis	Ad-Hoc Basis	Access WG ESCWA / Rotational 1 st Thursday Gender WG
NORTH	Ra2ees Al Maslaha Office Quarterly	Ad-Hoc Basis	WFP (every 2 months) Last Tuesday 11:00-1:00	UNDP Tripoli 1 st Tuesday 10:30-11:30	Location TBD 2 nd Wednesday 10:00-12:30	In Person UNDP Tripoli 1 st Tuesday (monthly) 11:45 - 12:45	Location TBD Last Tuesday 11:00	Ad-Hoc Basis	Ad-Hoc Basis	To be determined Logistics WG To be determined
SOUTH - EL NABATIEH	Online Quarterly	Ad-Hoc Basis	WFP (every 2 months) Last Thursday 10:00-12:00	UNDP Last Wednesday 12:00-1:00	Location TBD 2 nd Thursday 10:00-1:30	Online / In Person UNDP South Last Wednesday (monthly) 11:00 - 12:00	UNICEF 4 th Wednesday 12:00-2:00	Ad-Hoc Basis	Ad-Hoc Basis	Migrant WG Last Friday 13:00-14:30

Other Meetings			
SRH WG Meeting UNFPA Last Wednesday	IYCF Committee Meeting Ad-Hoc Basis	Core Group Emergency Meeting Every Wednesday 10:00 - 11:00	Water Quality Thematic Group Ad-Hoc Basis
CMR TF Meeting 3 rd Tuesday		National and Subnational CP Coordinators Meeting Every other Monday 2:00 to 1:00	
National MHPSS TF Meeting Online 1 st Tuesday 2:00		National CP Working Group Meeting 3 rd Thursday 10:00 - 12:00	
North MHPSS CG Meeting Quarterly 3 rd Wednesday 10:00			
Bekaa MHPSS CG Meeting 3 rd Tuesday 11:00			
South MHPSS CG Meeting 3 rd Wednesday 12:00			

Coordination of the Lebanon Response Plan

Actors & Roles: National and Subnational Coordination

Localized Understanding and Responsiveness

- Sub-national coordination brings in-depth knowledge of local needs, vulnerabilities, and challenges.
- Enables tailored responses that reflect the specific context of different regions.

Efficient Resource Allocation

- Ensures that resources are distributed effectively according to on-the-ground priorities.
- Helps avoid duplication of efforts and optimizes use of limited resources.

Rapid Response Capacity

- Local coordination mechanisms facilitate faster responses to emerging crises.
- Sub-national teams can identify and act on urgent needs before escalating them nationally.

Linkages with National Coordination

- Sub-national inputs inform national-level planning and strategic priorities.
- Ensures that local insights are reflected in broader, cohesive national frameworks.
- Strengthens alignment across different levels of coordination, creating a unified and efficient response structure.

Coordination of the Lebanon Response Plan

Actors & Roles: National and Subnational Coordination

Subnational coordination Lebanon shifted from inter-sector to inter-agency, operational are based.



The child depicted is fictional and does not represent a specific individual. The image reflects common, real-world conditions faced by vulnerable children living in informal settlements in Lebanon, where multi-sectoral needs intersect.

“Karim” is five years old.

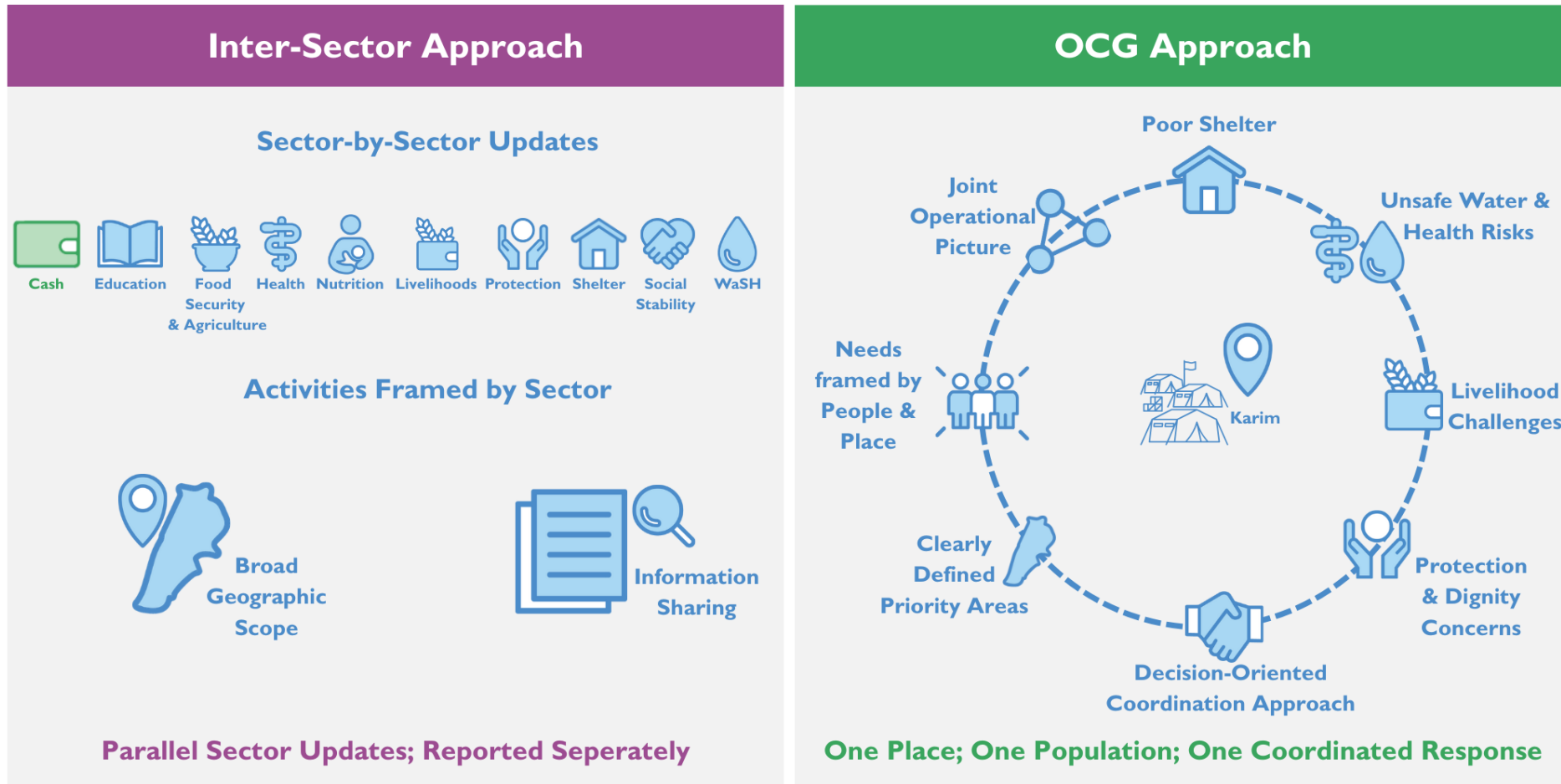
He lives in an informal settlement where muddy ground, stagnant water, and overcrowded shelters are part of daily life. He is often sick, suffering from recurrent respiratory infections, and stomach illness linked to unsafe water and poor sanitation. He walks barefoot because his family cannot afford shoes. He is not in school and contributes to his family’s income through occasional work. His mother prioritizes food over soap; medical visits are delayed because transport costs too much. For Karim, needs do not exist in isolation. His health is affected by shelter conditions. His nutrition is linked to livelihoods. His safety and dignity depend on protection, WaSH, social stability, access to services, at the same time, in the same place.

Through the OCGs the aim is to:

- **Put people like Karim and the duty-bearing actors responsible to deliver the support he needs at the center of coordination**, rather than discussing activities strictly by sector.
- **Coordinate agencies operating in the same locations** to respond to combined needs specific to the local context, while ensuring that key gaps requiring **strategic action or advocacy** for eg. policy change are swiftly elevated to the ISCG, Sector Lead Agencies, the HC, and the HCT.
- **Prioritize the most vulnerable households, and sequence and integrate assistance** so that health, WaSH, shelter, and protection interventions reinforce one another.
- **Reduce duplication and operational gaps** in a context of limited resources.
- **Strengthen local systems and partner ownership**, ensuring that responses are sustainable, accepted, and operationally coherent.

Coordination of the Lebanon Response Plan

Actors & Roles: National and Subnational Coordination



Coordination of the Lebanon Response Plan

Why Coordination?

Coordination is a mechanism that ensures:

- **Integrated response management** through a dedicated team.
- **Effectiveness** and **transparency** of the response.
- Oversight of the overall **progress** of the response.
- **Cohesion** and **linkages** between sectors, which facilitates collaboration and prevents duplication.
- **Communication** and **dissemination** of timely and accurate information to partners.
- **Development** and **establishment** of plans, guidelines, and strategies while informing the planning and supporting sector coordinators.



Mainstreaming Components

Jana Nasr, Senior Inter-Agency Coordination Assistant (UNHCR)

Mainstreaming Components

What are the Mainstreaming Areas under the LRP?

There are five cross-cutting issues mainstreamed across sectors under the LRP:

 Conflict Sensitivity

 Protection

 Gender & GBV

 Prevention of Sexual Exploitation and Abuse (PSEA)

 Accountability to Affected Populations (AAP)

 Environment

Mainstreaming Components

Conflict Sensitivity Mainstreaming Priorities 2026

- **Knowledge Sharing:** provide access to tensions data and analysis via dynamic public dashboards and ad-hoc tensions reports.
- **Thematic Knowledge Products:** develop knowledge products focusing on key cross-cutting themes in conflict sensitivity (i.e. Conflict-Sensitive Communication) based on consultation with practitioners.
- **Peer-to-Peer Learning:** foster opportunities for LRP partners to engage in peer-to-peer learning through structured exchanges and discussion forums (i.e. Conflict Sensitivity Summit 2026) around sectoral anecdotes and case studies from the field.
- **Deep-Dive Thematic Training:** organize specialized training sessions for targeted practitioner groups on cross-cutting conflict sensitivity issues (e.g., cash assistance, M&E, engaging with local authorities).
- **Digital Learning Opportunities & Moments of Engagement:** explore interactive digital resources including webinars, podcasts and micro-learning content on social media.

Conflict Sensitivity Focal Point: *Nisreen Jaafar, Conflict Analysis and Mainstreaming Officer (UNDP)* nisreen.jaafar@undp.org

Mainstreaming Components

Protection Mainstreaming Priorities 2026

Inter-sector level:

- **Support overall protection-sensitive analysis: extract disaggregated data across sectors** to ensure analysis of cross-sectoral vulnerabilities by ISCG IM.
- **Quarterly presentation of cross-sectoral findings** from the Protection Monitoring reports of the Protection Sector Protection Analysis MTF
- Provide cross-sectoral guidance on **disaggregation SADD** to be able to enhance gender, age and disability-specific response
- **Enhanced analysis of Service Mapping and AAP, such as Complaint and Feedback mechanisms with regards to inclusive and safe access.**
- **Ensure centrality of protection** in the overall coordination and implementation of the response, including on advocacy

Sector-level:

- **Sector coordinators hold responsibility for protection mainstreaming** and inclusion into the work plan to ensure all sector activities apply protection standards, including Do No Harm. Sector coordinators are therefore requested to develop the work plan and to facilitate the following process for the protection mainstreaming areas, including gender, age and disability as well as AAP.
- **Update protection risk analysis in each sector** led by the sector coordinators
- Ensure check lists and monitoring of mitigation measures in line with Protection Mainstreaming guidelines of the LRP
- Ensure access to training and information, accessible here: [GPC Protection Mainstreaming Toolkit | Global Protection Cluster](#)

Protection Sector

- Support sectors with training on **Protection referral pathways** and interagency referral standards to enhance the use, accuracy and timeliness in protection referrals.
- **Protection Mainstreaming** and **GBV risk mitigation** folders are updated – coordinators to ensure alignment

Protection Focal Point: *Sophie Etzold, Protection and GBV Sector Coordinator (UNHCR)* etzold@unhcr.org

Mainstreaming Components

Gender & GBV Mainstreaming Priorities 2025

Responsibility of Sectors and Partners:

- **Access the gender analysis and GBV risk mitigation tools and ensure compliance and amendment as relevant**
- Ensure **implementation of [Guidelines for Integrating Gender-Based Violence Interventions in Humanitarian Action](#)** indicators across sectors response plan for each respective sector
- Engage with the GBV WG Coordinators for sharing and presenting **up to date GBV assessments, tools, findings and recommendations** to inform the GBV risk mitigation establish monitoring mechanisms

GBV sub-sector and Gender WG:

- **Review the functioning of Gender and GBV FP across sectors and support the network of gender and GBV focal points in all sectors.**
- Through the Gender WG, expand and update gender analysis – **draft gender briefings and present findings across sectors.**
- **Share and enhance the use of GBVIMS data and trend analysis** to inform risk mitigation interventions
- **Train all sectors on GBV Referral Pathways and service mapping** to ensure safe, confidential and timely referrals of GBV cases
- Roll-out capacity-building trainings on Gender-mainstreaming, GBV risks mitigation

Gender Mainstreaming Focal Point: Sara El Outa (UNWOMEN) sara.elouta@unwomen.org

GBV Risk Mitigation Focal Points: Sophie Etzold, Protection and GBV Sector Coordinator (UNHCR) etzold@unhcr.org

Mia Kusic GBV Coordinator (UNFPA) kusic@unfpa.org

Mainstreaming Components

PSEA Mainstreaming Priorities 2025

- **Institutionalize PSEA within Sector Systems**
 - Integrate PSEA responsibilities into sector workplans, guidance, and partner engagement.
 - Ensure active Sector PSEA Focal Points and linkages with the inter-agency PSEA Network.
- **Strengthen Risk-Based Prevention Approaches**
 - Apply the Inter-Agency SEA Risk Assessment to sector activities and partner operations.
 - Use findings to adjust program design, targeting, and delivery modalities.
- **Build Practical Capacity at Frontline Level**
 - Provide sector-specific orientation, tools, and mentoring on identifying, mitigating, and responding to SEA risks.
 - Disseminate PSEA preparedness tipsheets and contextualized guidance.
- **Improve Safe Reporting & Survivor-Centered Referrals**
 - Ensure frontline actors understand roles, do-no-harm principles, and referral mechanisms.

The full set of PSEA Network resources is available [here](#).

PSEA Focal Point: *Elisa Cappelletti, PSEA Network Coordinator (OCHA)* cappelletti@un.org

Mainstreaming Components

AAP Mainstreaming Priorities 2025

- **Institutionalize AAP within Sector Coordination**
 - Integrate AAP responsibilities into sector workplans, strategies, and partner engagement.
 - Ensure active Sector AAP Focal Points and linkages with the inter-agency AAP structure.
- **Strengthen Collective Feedback Systems**
 - Align sector mechanisms with inter-agency feedback channels, including referral to collective platforms.
 - Reduce duplication of hotlines and parallel feedback mechanisms where feasible.
- **Use Community Feedback to Inform Decisions**
 - Regularly analyze feedback trends relevant to the sector.
 - Adjust targeting, modalities, and service delivery based on community perspectives.
- **Promote Inclusive and Accessible Communication**
 - Ensure information is clear, culturally appropriate, and accessible to diverse groups Strengthen two-way communication at frontline level.
- **Enhance Sector Accountability for Closing the Feedback Loop**
 - Track how feedback leads to action and communicate back to communities.
 - Include AAP integration in sector monitoring, partner follow-up, and performance discussions.

PSEA Focal Point: *Elisa Cappelletti, PSEA Network Coordinator (OCHA)* cappelletti@un.org

Mainstreaming Components

Environment Mainstreaming Priorities 2025

1. Strengthen the adoption of the environmental marker for screening of project with reporting through [ActivityInfo](#) and the application of mitigation measures where risks are identified.
2. Improve project design to ensure sustainability of the intervention, including but not limited to environmental sustainability and climate proofing. Joint social and environmental results are strongly encouraged.
3. Improve reporting on environmental metrics, including committed financial resources.

Resources available [here](#):

- Environmental Marker Guide.
- Training resources on solid waste management, water and wastewater management, and natural resources management, and project climate-proofing.

The ETF is available to support the sectors as needed. Periodic meetings will be held to brainstorm on needs and possible collaboration avenues.

Environment Focal Point: Minerva Andrea, *Environment Task Force Coordinator (MoE)* m.andrea@moe.gov.lb



Information Management and Reporting

Maroun Sader, Assistant Information Management Officer (UNHCR)



Tools & Products

Maroun Sader, Assistant Information Management Officer (UNHCR)

Information Management Tools

What are the different IM Tools?

The [Lebanon Information Hub](#) is an online platform hosting all Information Management (IM) tools.



Data Portal

Main gateway to operational data.



Inter-Sector Service Mapping

Mapping of services and assistance in all governorates, including referral pathways & 5W information.



Activity Info

Partners' activity and funding aid tracking reporting tool.



Refugee Lebanon

Webpage providing information on all humanitarian aid services available in Lebanon.

Information Management Tools

What are the different IM Tools?



Contact Hub

Online application to register for Inter-Sector mailing lists.



Contact List

Lists of Inter-Sector Leaders, Sector Coordinators, and IM Focal Points.



**Assessment Registry
(LASER)**

Online repository of on-going and past assessments in Lebanon.



Map Hub

Go-to place for dynamic maps related to the Syria Crisis Response in Lebanon.

Information Management Tools

What are the different IM Tools?



VASyR Hub

This portal provides access to all VASyR reports and an extensive range of data tables and resources.



Reporting Tools

Directory of sectors log frame, list of indicators and ActivityInfo user guides.



Stocks

Dashboard shown the available stocks based on the Contingency & Preparedness database.

Information Management Updates

Available IM Products – Data Portal

UNHCR Data Portal

Each sector has a **dedicated sector page**

Sector pages include:

- **Sector logframe and strategy**
- **Quarterly dashboards**
- **Other sector-specific IM products and publications**
- **Meeting Calendar**
- **Sector focal point contacts**

Content is regularly updated and aligned with sector reporting

The screenshot displays three overlapping screenshots of the UNHCR Operational Data Portal. The top screenshot shows the 'Protection Sector - Lebanon' page, which includes a navigation bar with 'SITUATIONS', 'COUNTRIES', 'REGIONS', and 'PARTNERS', a search bar, and a language dropdown set to 'EN'. Below the navigation, there is a 'Description' section. The middle screenshot shows the 'Shelter Sector - Lebanon' page, also with the same navigation bar and a 'Description' section. The bottom screenshot shows the 'Social Stability Sector - Lebanon' page, featuring a 'Description' section and a 'Working Group Documents' section. This section lists various documents with their titles, download/view links, file sizes, and download counts. For example, 'Lebanon: Lebanon Response Plan - 2026' is listed with a download count of 561. Other documents include 'Lebanon Response Plan: Social Stability Sector Dashboard - End of Year 2024' (763 downloads) and 'Lebanon Response Plan: Storm Response Situation Update - January 2026' (169 downloads). A sidebar on the left of the bottom screenshot lists categories like 'All Documents (737)', '3RP Documents (13)', '3W (4)', 'Assessments (43)', 'Communication with Communities (2)', 'Contact Lists (2)', and 'Dashboards & Factsheets (209)'.

Inter-Agency Photo Repository

What are the key features?

Access the
[Collection Link](#)



Refer to the
[Guidance Note](#)

Partner

Images by
Sector

Captions
“ ”

Credits
©

Comments
if any

Remember to number photos when uploading in bulk and to add captions and credits!

Inter-Agency Photo Repository

Examples

Sector Dashboards



Reproductive Health Sub-Working Group (RHSWG)

During the second quarter of 2024, there was a decrease in the number of Assisted Care (ANC) consultations at Primary Healthcare Centres (PHCCs) across Lebanon compared to 2023. Factors reported by health sector partners include the impact of the economic crisis, the high cost of ANC services, and the limited availability of ANC services. The number of ANC consultations decreased by 10% compared to 2023, with a 15% decrease in the number of ANC consultations at PHCCs compared to 2023, which require further attention.

To support efforts to advance the continuum of maternal care, the RHSWG is exploring the feasibility of expanding ANC services to rural areas. This involves identifying key barriers to ANC services in rural areas and exploring potential solutions. The RHSWG is also exploring the possibility of expanding ANC services to rural areas through mobile health services and telemedicine. The RHSWG is also exploring the possibility of expanding ANC services to rural areas through mobile health services and telemedicine.

Winter Paper & Storm Reports

Lebanon Winter Preparedness and Response

Overview

With the winter season approaching, the Lebanon Response Plan (LRP) partners are coordinating interventions to address seasonal risks and emergency crises. The upcoming winter remains marked by protracted economic factors, a fragile political and security environment, and the continued erosion of household coping capacities across all population groups. While 2023 has brought a degree of renewed hope with an increased pace of recovery of displaced Syrians in Syria and since the 2022, the gradual return of internally displaced Lebanon following the ceasefire, many vulnerable households of all nationalities remain unable to meet their basic needs. Persistently high fuel and food prices, inadequate shelter conditions, and the combination of extreme winter have left families ill-prepared to cope with the added strain of winter, particularly in high-altitude areas prone to snow, flooding, and adverse temperatures.

For 2023-2024, the winter response will maintain a comprehensive, multi-sectoral approach, combining institutional preparedness and direct household assistance.

Partners will:

- Prioritize early preparedness at national, sub-national, and community levels to enable timely interventions before the onset of severe weather.
- Provide winter support to the most vulnerable households, particularly those in high-altitude areas, informal settlements, and substandard shelters.
- Reinforce shelter and infrastructure in vulnerable areas and at the community level where winter hazards are most acute.
- Coordinate closely with local authorities and institutions to strengthen seasonal response mechanisms and ensure resource access across partners.
- Integrate health services, ensuring that vulnerable individuals, choosing to remain in Lebanon continue to receive adequate support while fulfilling safe and dignified conditions for those returning.

The financial requirements for winter preparedness and response in 2023-2024 are \$31.83 million, encompassing preparedness, institutional support, and household-level assistance. This represents a 22 per cent decrease from last year, when the winter response budget was driven by needs arising from the mass displacement that followed the outbreak of hostilities. The significant reduction reflects both the decrease in needs following the gradual return of internally displaced persons and the closure of most collective sites, as well as the sector efforts to reevaluate and prioritize in high-reduced resources.

This paper outlines the scope and approach of the winter response, emphasizing the need for early action, enhanced across sectors, and flexible adaptation to emerging challenges. Building on lessons learned, the response will continue to strengthen protection-sensitive programming to safeguard the wellbeing and dignity of those most at risk across Lebanon, informed by real-time needs and emerging evidence. The response will remain flexible to adapt to evolving risks in the year.



Storm Situation Update: January 2025

GENERAL SITUATION

The winter season in Lebanon began with relatively mild climate before developing into more challenging conditions in early 2025. This period was marked by severe weather as a major storm affected the country, bringing heavy rainfall, intense winds, and high temperatures, causing flooding, landslides, and infrastructure damage. These events resulted in flooding, fire, and power outages, exacerbating existing vulnerabilities and increasing the need for humanitarian assistance.

The storm's impact was most significant in the North and Akkar, extending to Beirut and Mount Lebanon (ML). By the end of January, 727 households, composed of 1,850 individuals, were estimated to be affected in 184 sites across Beirut and Mount Lebanon (ML), and the North and Akkar regions. In the Bekaa, 225 homes were selected, primarily concerning shelter repair needs.

Preparedness actions at both household and community levels, particularly in high-altitude areas where winter conditions are most severe, have contributed to mitigating the storm's impact.



Lebanon Winter Preparedness and Response

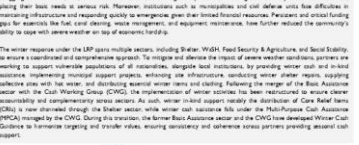
Winter Preparedness

Lebanon's winter season is marked by severe weather conditions, including heavy rain, snow, high winds, and thunderstorms, leading to flooded roads, landslides, and damage to substandard shelter, especially in informal settlements. Last year, the winter was notably mild, especially in coastal and inland areas. Temperatures remained above average, with snowfall and ice were below average in most areas. The winter season had several implications, including reduced heating needs and less snow on infrastructure. However, it also posed challenges for agriculture and water resources, including an increased risk of water scarcity and drought-like conditions in some high-recovery regions.

This year, the winter season is expected to bring mild to moderately cold conditions overall, with heavier snowfall in high-altitude areas, while conditions across coastal and inland areas are likely to remain relatively mild. These projections highlight the importance of ongoing preparedness measures, particularly for responses in areas above 500 meters, where winter conditions are most severe. Considering the increasing unpredictability of seasonal patterns due to climate change, maintaining adequate emergency planning is essential to ensure rapid response capacity and resilience for all weather conditions.

High winter conditions add further pressure to Lebanon's already fragile socio-economic situation, where many households are struggling to afford food, fuel, and healthcare. Power cuts and high fuel prices make heating and electricity unaffordable for many, putting their basic needs at serious risk. Moreover, institutions such as municipalities and civil defense units face difficulties in monitoring infrastructure and responding quickly to emergency given that limited financial resources. Personnel and critical funding gaps for search and rescue, fire, and emergency services, and equipment maintenance, have further reduced the community's ability to cope with severe weather on top of economic hardship.

The winter response under the LRP across multiple sectors, including Shelter, WFP, Food Security & Agriculture, and Social Stability, to ensure a coordinated and comprehensive approach. To mitigate and address the impact of severe weather conditions, partners are working to support vulnerable populations of all nationalities, reinforce food reserves, by providing winter cash and in-kind assistance, implementing municipal support projects, enhancing infrastructure, reinforcing winter shelter, repair, repairing substandard areas with low winter, and distributing essential winter items and heating. Following the request of the Basic Assistance sector with the Civil Working Group (CWG), the implementation of winter activities has been re-evaluated to ensure clear accountability and complementary across sectors. As such, winter-related support largely the distribution of Cash Relief Items (CRI) is now streamlined through the Shelter sector, while winter cash assistance falls under the Multi-Purpose Cash Assistance (MPCA) managed by the CWG. During this revision, the former Basic Assistance sector and the CWG have developed Winter Cash Guidelines to streamline targeting and transfer rules, ensuring consistency and coherence across partners' preparedness and cash support.



Lebanon Winter Preparedness and Response

Winter Preparedness

Lebanon's winter season is marked by severe weather conditions, including heavy rain, snow, high winds, and thunderstorms, leading to flooded roads, landslides, and damage to substandard shelter, especially in informal settlements. Last year, the winter was notably mild, especially in coastal and inland areas. Temperatures remained above average, with snowfall and ice were below average in most areas. The winter season had several implications, including reduced heating needs and less snow on infrastructure. However, it also posed challenges for agriculture and water resources, including an increased risk of water scarcity and drought-like conditions in some high-recovery regions.

This year, the winter season is expected to bring mild to moderately cold conditions overall, with heavier snowfall in high-altitude areas, while conditions across coastal and inland areas are likely to remain relatively mild. These projections highlight the importance of ongoing preparedness measures, particularly for responses in areas above 500 meters, where winter conditions are most severe. Considering the increasing unpredictability of seasonal patterns due to climate change, maintaining adequate emergency planning is essential to ensure rapid response capacity and resilience for all weather conditions.

High winter conditions add further pressure to Lebanon's already fragile socio-economic situation, where many households are struggling to afford food, fuel, and healthcare. Power cuts and high fuel prices make heating and electricity unaffordable for many, putting their basic needs at serious risk. Moreover, institutions such as municipalities and civil defense units face difficulties in monitoring infrastructure and responding quickly to emergency given that limited financial resources. Personnel and critical funding gaps for search and rescue, fire, and emergency services, and equipment maintenance, have further reduced the community's ability to cope with severe weather on top of economic hardship.

The winter response under the LRP across multiple sectors, including Shelter, WFP, Food Security & Agriculture, and Social Stability, to ensure a coordinated and comprehensive approach. To mitigate and address the impact of severe weather conditions, partners are working to support vulnerable populations of all nationalities, reinforce food reserves, by providing winter cash and in-kind assistance, implementing municipal support projects, enhancing infrastructure, reinforcing winter shelter, repair, repairing substandard areas with low winter, and distributing essential winter items and heating. Following the request of the Basic Assistance sector with the Civil Working Group (CWG), the implementation of winter activities has been re-evaluated to ensure clear accountability and complementary across sectors. As such, winter-related support largely the distribution of Cash Relief Items (CRI) is now streamlined through the Shelter sector, while winter cash assistance falls under the Multi-Purpose Cash Assistance (MPCA) managed by the CWG. During this revision, the former Basic Assistance sector and the CWG have developed Winter Cash Guidelines to streamline targeting and transfer rules, ensuring consistency and coherence across partners' preparedness and cash support.



What's New



Official Endorsement of the 2024 Lebanon Response Plan

Under the joint chairmanship of the Deputy Prime Minister and UN Resident and Humanitarian Coordinator for Lebanon, the Lebanon Response Plan (LRP) Steering Committee convened on the 10th of December 2023. The Committee reaffirmed its commitment to principled, inclusive, and coordinated assistance, strengthening national institutions, and advancing stabilization and recovery while supporting safe, dignified, and sustainable returns of displaced Syrians. The 2024 LRP calls for \$1.62 billion to support 1.5 million people in critical need of assistance and protection services, including vulnerable Lebanese, displaced Syrians, Palestinian Refugees from Syria (PRS), Palestinian Refugees in Lebanon (PRL), and migrants. The press release is available here in [Arabic](#) and [English](#).

Post-December 2024 Arrivals from Syria Inter-Sector Response Dashboard – January 2023 to November 2023

The centralized dashboard, developed by the Inter-Sector Coordination Group (ISCG), is designed to strengthen coordination and ensure accurate inter-sector reporting on the response to post-December 2024 arrivals from Syria. It consolidates sector-reported data from ActivInfo and automatically reflects updates as partners update their figures, reducing discrepancies. Moreover, the dashboard provides LRP stakeholders with insights to support planning and evidence-based decision-making. The post-2024 arrivals from Syria inter-sector response dashboard is available [here](#).

UNHCR-Supported Voluntary Repatriation of Displaced Syrians in Lebanon – 30 November 2023

This overview was prepared by UNHCR to provide an update on the Voluntary Repatriation (VR) of Displaced Syrians in Lebanon. Since January 2023, 379,103 Syrian individuals known to UNHCR have been inactivated from UNHCR's database due to confirmed and presumed returns to Syria. By the end of November, a total of 45,195 Syrian individuals known to UNHCR returned the facilitated VolRep programmes, including completing voluntariness assessments, issuance of Repatriation Forms, and provision of a return cash grant of \$100 per returning individual. 7423 Syrian individuals (13,897 households) have expressed interest and remain in the pipeline for the UNHCR-facilitated VolRep programme. UNHCR and IOM have also facilitated 11 organized return movements of 2,499 Syrian individuals through Akkar and Mansha borders to Rural Damascus, Damascus, Hama, Idlib and Aleppo. A schedule of 2 further organized return movements for the remainder of the year is also being scheduled. The latest update on VolRep is available [here](#).

Integrated Food Security Phase Classification Analysis Report – November 2023 to March 2024

The latest Integrated Food Security Phase Classification Analysis Report (IPC) released by Lebanon's Ministry of Agriculture, FAO, and WFP reveals that the acute food insecurity situation in Lebanon has further eased compared to the first half of 2023, but there are still a significant number of people facing high levels of acute food insecurity. Between November 2023 and March 2024, around 87,400 Lebanese residents, Syrian refugees, Palestinian refugees and post-2024 arrivals' continue experiencing IPC Phase 3 or above (Crisis or worse). This includes 22,000 people experiencing large food gaps and high levels of acute malnutrition, classified in IPC Phase 4 (Emergency) and 851,000 people who are unable to meet their essential food requirements and resort to unsustainable coping measures, classified in IPC Phase 3 (Crisis). These populations require urgent humanitarian action to reduce food gaps, protect and restore livelihoods and prevent acute malnutrition. The Integrated Food Security Phase Classification Analysis Report is available [here](#) and the Lebanon IPC Pages are available [here](#).

UNHCR Protection Monitoring Report – Q3 2023

The ongoing protection monitoring report is conducted by UNHCR to analyze trends in the protection environment and risks facing refugees. This is implemented at the regional and at the national levels by UNHCR's protection monitoring partners. Partners conduct interviews with refugee households and key informants to gather their feedback on the overall protection environment in Lebanon. The Protection Monitoring Report for Q3 2023 is available [here](#).

This issue of 'What's New?' is available on the Lebanon Information Hub [here](#). To have your publications featured in future 'What's New', please email info@unhcr.org.



Reporting and Knowledge Management

Maroun Sader, Assistant Information Management Officer (UNHCR)

Reporting and Knowledge Management

LRP Reporting, Information Products, and Tools

The yearly **Reporting Calendar** ensures these products are finalized and circulated in a timely manner

Reporting

- Statistical & Sector dashboards (monthly, quarterly, and annual).
- Public Institutions Support (PIST) Report (annual).
- Funding Update (quarterly).
- LRP Annual Report.

Information Products

- LRP Inter-Sector Situation Update (quarterly).
- Assessments (e.g. VASyR, VARON, Tensions surveys, etc.)
- In Focus Report.

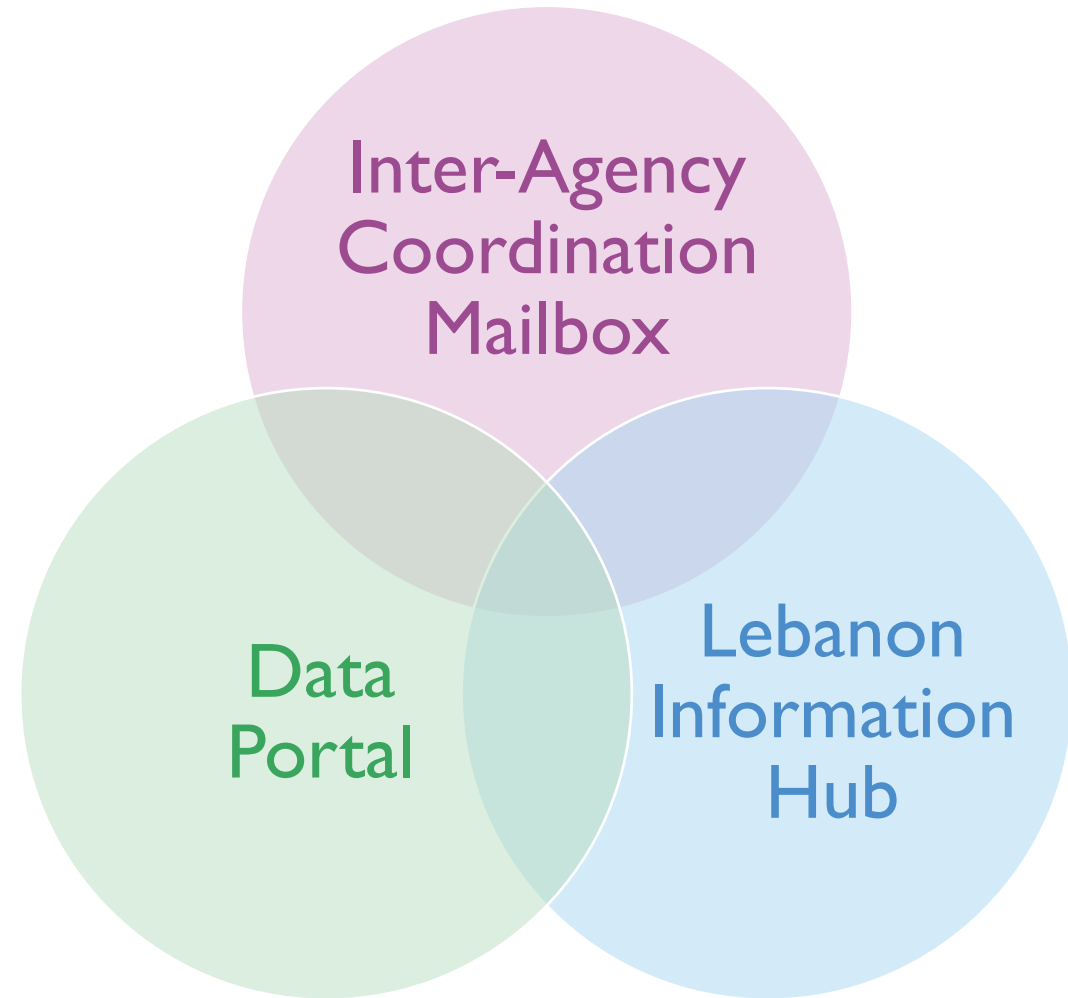
Tools

- Sectoral technical guidance, minimum standards.
- LRP Service Mapping.

Reporting and Knowledge Management

Communication and Access to LRP Products and Tools

Partners/donors/NGOs and interested individuals can subscribe to the Inter-Agency mailing list to receive updates related to the response across all sectors and areas through the [Contact Hub](#)



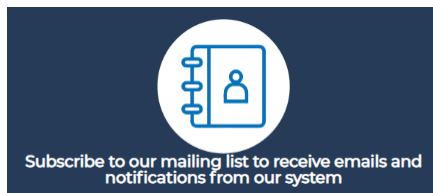
Reporting and Knowledge Management

How to Subscribe to the Inter-Agency Mailing List

To receive inter-sector updates and invitations to meetings, or to sign up for a specific sector working group, please subscribe to the inter-sector mailing list(s). You can choose which specific sector(s) and which field office(s) you would like to subscribe to.

How to Subscribe:

1. Visit the Lebanon Information Hub: <https://ialebanon.unhcr.org/>
2. Scroll down to find the following icon and click on it.



3. Fill in all the required information, including your name, email address, and other relevant details.
Note: *If your organization name is not listed, you can select "other organization" or a similar option.*
4. Click the "Add record" button to proceed.
5. On the subscription form, you will have the option to choose different sectors and geographic levels under which you wish to be registered. *Select the relevant sectors that align with your interests or responsibilities.*
6. Once you have added all the related sectors, click on the "**Save record**" button to complete the subscription process.
7. To unsubscribe from the mailing lists in the future, simply click [unsubscribe](#).



Refresher Training

Maroun Sader, Assistant Information Management Officer (UNHCR)

Refresher Training

LEBANON - 01.2026 LRP Sector Reporting

LEBANON - 0.2025 Sectors Reporting – Archive

Database is **locked**, and partners need to ask for access to the new **LEBANON - 01.2026 LRP Sector Reporting**

- Reporting on monthly basis.
- **8th** of each month the data of previous months.
- **15th** of each month, verification and lock the data reported of the previous month.
- **New for this year at the project level:**
 - List all sectors activities implementing under the project
 - Activity budget: **of the direct implementation cost (excluding the staffing and the overhead)**
 - Activity Target per governorate

The screenshot shows the user interface for the 'LEBANON - 01.2026 LRP Sector Reporting' database. At the top, it displays the database name and the user's role as 'Administrator'. Below this, there are navigation options: 'Add form', 'Add folder', 'Import XLSForm Beta', and 'Export'. The main content area lists 12 sectors, each with a folder icon and a name: 00 - Projects IA, 01- Cash Working Group, 02- Child Protection, 03- Education, 05- Food Security, 06- Health, 07- Livelihoods, 08- Protection and GBV, 10- Shelter, 11- Social Stability, and 12- WaSH Sector.

Refresher Training

LEBANON - 01.2026 LRP Sector Reporting: 16- Inter-Agency Referrals

- Reporting on monthly basis for each sector all the referrals status (No feedback received, Acknowledged, Accepted and not Accepted)
- 8th of each month the data of previous months.

DATABASES > LEBANON - 01.2026 LRP SECTOR REPORTING
LEBANON - 01.2026 LRP Sector Reporting

DATABASE OWNER: Nuha Abdallah | YOUR ROLE: Administrator | Download for offline use | Database settings

16- Inter-Agency Referrals

PROTECTION

Referrals to Protection

Protection: Total Referrals
This number is the sum total of the breakdown of the four categories below

Protection: No Feedback Received
Referral sent, receiving agency has not confirmed receipt of referral

Referrals

Protection: Referral Acknowledged
Receiving agency confirmed receipt of the referral

Referrals

Protection: Referral Accepted
Receiving agency provided feedback that the referral is accepted and a service will be provided

Referrals

Protection: Referral Not Accepted
Receiving agency provided feedback that they cannot accept the referral (assessment may have been conducted but the individual/ household does not meet criteria, the NGO is at maximum capacity, lost contact with individual/ household)

Referrals

Refresher Training

LEBANON - 02. Service Mapping Database

0. Lebanon Service Mapping (Archive)

Database is **locked**, and partners need to ask for access to the new **LEBANON - 02. Service Mapping Database**

- Reporting and updating of active services on monthly basis.
- **8th** of each month to verify your services
- **New for this year:**
 - One form to report all sectors services
 - For Health services it will be linked from the reporting to the service mapping dashboard to avoid duplication

DATABASES > LEBANON - 01. 2026 LRP SECTOR REPORTING > 06- HEALTH
06- Health

6- PHC Master list
7- SHC Master list

DATABASES > LEBANON - 02. SERVICE MAPPING DATABASE > 2026 SERVICE MAPPING
2026 Service mapping

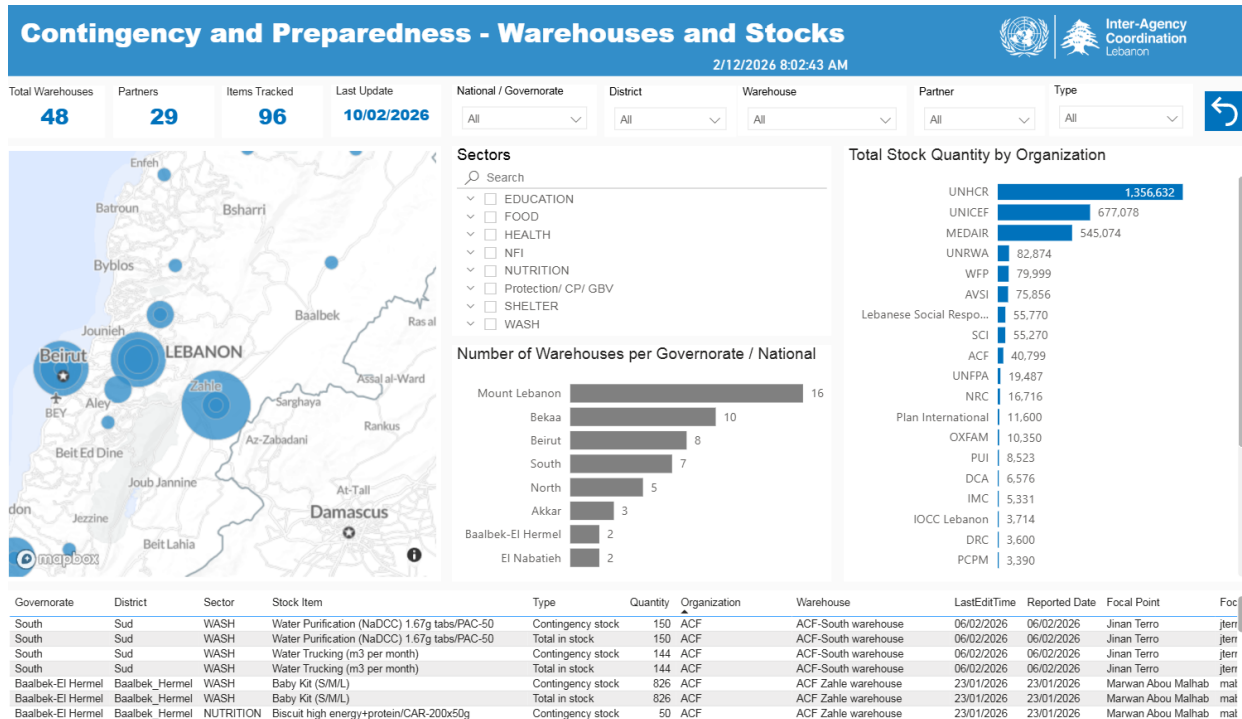
+ Add ▶ Submit 📄 Views 📄 Import 📄 Export 📄 Collection link 📄 Analyze

	Partner	Services Sec...	Services Ser...	Response ty...	Activity E... ↑
✓	AMEL	Education	Edu07: Support T...	Regular Response	2030-02-28
✓	NAC-National Au...	Child Protection	CP03: FPSS servi...	Regular Respons...	2030-01-01
✓	NAC-National Au...	Education	Edu03: Educatio...	Regular Respons...	2030-01-01
✓	NAC-National Au...	Livelihoods	L14: Vocational T...	Regular Respons...	2030-01-01
✓	NAC-National Au...	Child Protection	CP04: Parenting ...	Regular Respons...	2030-01-01
✓	NAC-National Au...	Protection	Prt08: Specialize...	Regular Respons...	2030-01-01
✓	NAC-National Au...	GBV	GBV07: Skills buil...	Regular Respons...	2030-01-01
✓	Service de L' enf...	GBV	GBV01: Case ma...	Regular Response	2029-12-31
✓	We World GVC	Food Security & ...	FSA02: Agricultur...	Regular Response	2029-12-31
✓	AMEL	Protection	Prt06: Psychoso...	Regular Response	2028-12-31

Refresher Training

LEBANON - 03. Contingency & Preparedness

- Reporting and updating your available stocks and warehouse on monthly basis.
- **22nd** of each month to verify your **Total tocks** and **of which contingency**
- Online Dashboard: <https://ialebanon.unhcr.org/#EmergencyTools>



DATABASES > LEBANON - 03. CONTINGENCY & PREPAREDNESS > 02- STOCKS > ADD RECORD

Add record in 02- STOCKS

Add record

You are here

02- STOCKS

Partner*

Select Name

+ Add reference record in Partner

Update Date*

Select a date (YYYY-MM-DD)

Comments

Geographic level*

Please select National if only the stocks cover all Lebanon

Select Name

Jump to

- Contact Details
- OTHER
- Deployment details
- SHELTER
- WASH
- NFI
- EDUCATION
- FOOD
- HEALTH
- Trauma and Emerge...
- First Aid Kits (FAK)

Refresher Training

LEBANON - 04.Aid Tracking

- Reporting and updating your available funds on Quarterly basis.
- 9th of each last month of the quarter to report and update the fund received, committed, Carryover and spent related to each project and across different frameworks and sectors.

DATABASES > LEBANON - 04. AID TRACKING > ORGANIZATIONS >

Projects 2025

DATABASE OWNER: Nuha Abdallah | YOUR ROLE: Administrator | Download for offline use

+ Add form | + Add folder | Import XLSForm ^{Beta} | Export ▾

☰ 01- Project information

LEBANON Response Plan | Lebanon Response Plan (LRP) 2025 Q3 Funding Update
As of 30th of September 2025

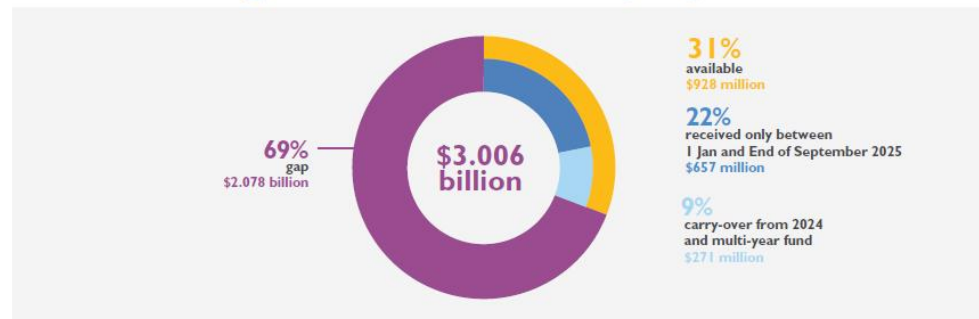
LRP 2025 Appeal

\$3,006 billion

Available

\$928 million
\$657 million received between January and End of September 2025 plus \$271 million of funds received in 2024 for 2025 projects + carry-over

LRP 2025 Funding Available *Based on Partner Reporting*





QUIZ TIME!



Join at
slido.com
#2927 453



**What Year was the Lebanon
Response Plan (LRP) first
launched?**



Who among the following UN Agencies does not coordinate the LRP?



How much is the LRP Appeal for 2026?



**What is the online platform
hosting all Information
Management (IM) products?**



Which of the following is not a mainstreaming area under the LRP?



Questions?

Key Links

- [Lebanon Information Hub](#)
- [Lebanon Response Plan 2026](#)
- [LRP At a Glance 2026](#)
- [LRP Coordination Meeting Schedule 2026](#)
- [LRP Reporting Calendar 2026](#)
- [LRP Sector Coordination Teams 2026](#)
- [What's New? LRP Update December 2025](#)

For general queries, please contact Inter-Agency Coordination at lebbeia@unhcr.org

For IM related queries, please contact Maroun Sader at sader@unhcr.org or Raffi Kouzoudjian at kouzoudj@unhcr.org



Thank you