



# LEBANON Response Plan

## Inter-Sector Coordination Group Meeting

April 24 2026



# Opening Remarks

*ISCG Co-Chairs*

# Agenda

---

1. **Response Monitoring**
2. **ERNA Updates**
3. **GBV Safety Audit Findings**
4. **Humanitarian Notification System**
5. **AoB**

# Action Points

## Follow Up

Meeting	Action Point	Status
2-Apr-2026	Sectors to provide inputs on LRP 2025 End of Year Inter-Sector Dashboard by Monday, 13 April 2026.	Done
2-Apr-2026	AAWG, in coordination with OCGs, to initiate the rollout of ERNA+ and ensure alignment with sub-national coordination structures for both in and out-of-shelter assessments.	Done
27-Mar-2026	AAWG to share the list of partners interested in conducting out-of-shelter assessments with OCGs to support subnational coordination.	Done
27-Mar-2026	ISCG to finalize and share the Standard Operating Procedures (SOPs) on convoy coordination to clarify roles, prioritization process, and communication channels in consultation with a small group including one representative from Logistics,AWG, OCG, and national sector coordination.	Ongoing
6-Mar-2026	Sectors to provide inputs on Flash Updates on Mondays and Thursday by 7:00 PM.	Ongoing
6-Mar-2026	Sectors to closely follow-up with their partners to report their activities DAILY through <a href="#">ActivityInfo</a> by 16:00, covering assistance provided both inside and outside collective shelters.	Ongoing
2-Mar-2026	MoSA to activate and share the shock-responsive safety net registration link for affected populations based on assessment and needs.	Done
2-Mar-2026	Logistics Cluster to collect and assess transportation and logistics gaps (including fuel and convoy preparedness) and coordinate with sectors accordingly.	Ongoing

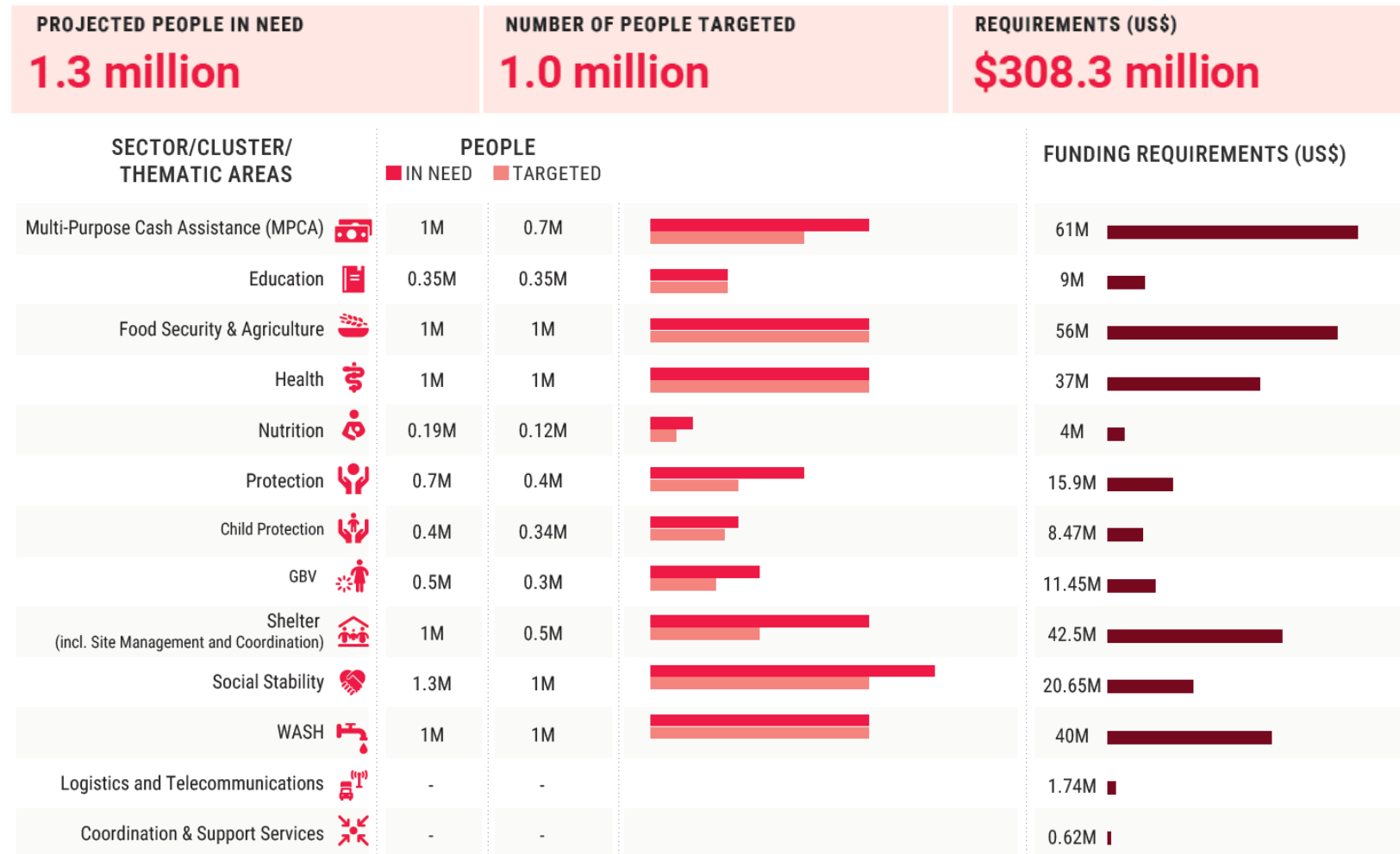


# Response Monitoring

*Bernard Chedid, Information Management Officer (OCHA)*

# Response Monitoring

## Lebanon Flash Appeal



# Response Monitoring

## Lebanon Flash Appeal

---

### Key Principles

Simplicity: limited indicators (Flash Appeal context).

Timeliness over perfection.

Use of existing systems (avoid duplication) *Daily reporting on ActivityInfo.*

Avoid partners' reporting burden.

Interoperability across sectors.

### Roles and responsibilities

<b>Sectors / Clusters</b>	Technical monitoring	Track indicators, validate partner data
<b>IMWG / OCHA</b>	Data management & analysis	Harmonization, dashboards, analysis
<b>Partners (UN/NGOs)</b>	Data collection	Activity reporting

# Response Monitoring

## Lebanon Flash Appeal

### Data Flow

- Partners → report to **Sectors (ActivityInfo Daily reporting form-existing)**
- Sectors → validate & aggregate (Convert activities into # people reached)
- ISCG → consolidate inter-sectoral picture
- OCHA IM → produce dashboards, analysis
- RC/HCT → use outputs for decision-making



### LEBANON

#### Flash Appeal - Response Overview

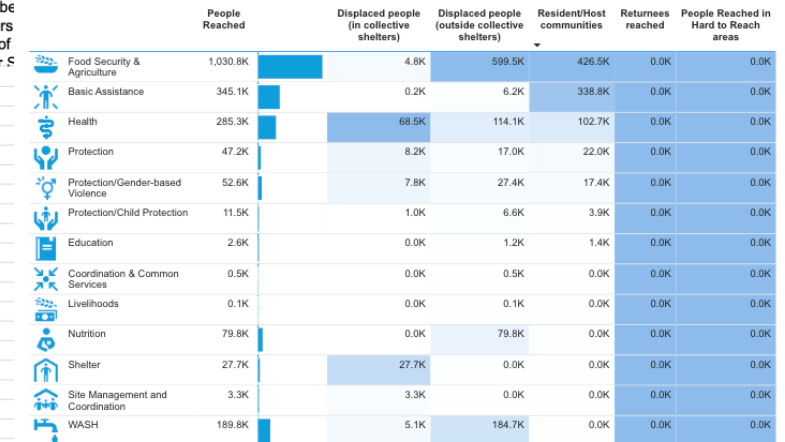
As of 31 March 2025

Inter-Sector



PCODE	District	Sector	DISPLACED people reached		RESIDENT/ HOST COMMUNITIES people reached	RETURNEES people reached	Total People Reached	(sum adds up to total people reached)					People with disability	People Reached in Hard to Reach areas out of total
			In collective shelters	Outside collective shelters				Girls	Boys	Women	Men	Older people		
LB51	Akkar	FSA	16,211	10,645	14,309		41,165	6,175	5,763	11,938	11,114	6,175	1,647	
LB31	Aley	FSA	18,481	3,530	12,630		34,641	5,196	4,850	10,046	9,353	5,196	1,386	
LB32	Baabda	FSA	6,967	1,720	25,754		34,441	5,166	4,822	9,988	9,299	5,166	1,378	
LB21	Baalbek	FSA	12,102	5,225	10,594		27,921	4,188	3,909	8,097	7,539	4,188	1,117	6960
LB53	Bcharre	FSA	0				0	0	0	0	0	0	-	
LB11	Beirut	FSA	58,521	26,065	12,158		96,744	14,512	13,544	28,056	26,12	14,512	3,870	
LB41	Bent Jbeil	FSA	1,260		11,137		12,397	1,860	1,736	3,595	3,347	1,860	496	5,500
LB33	Chouf	FSA	12,023	30,110	10,286		52,419	7,863	7,339	15,201	14,15	7,863	2,097	
LB52	El Batroun	FSA	2,325	75	745		3,145	472	440	912	849	472	126	
LB22	El Hermel	FSA	0		897		897	135	126	260	242	135	36	
LB54	El Koura	FSA	3,744	90	1,773		5,607	841	785	1,626	1,514	841	224	
LB36	El Meten	FSA	15,437	4,340	6,750		26,527	3,979	3,714	7,693	7,162	3,979	1,061	
LB55	El Minieh-Dennie	FSA	6,743	1,115	8,954		16,812	2,522	2,354	4,876	4,539	2,522	672	
LB44	El Nabatieh	FSA	150		28,150		28299.8	4,245	3,962	8,207	7,641	4,245	1,132	16,000
LB42	Hasbaya	FSA	200		4,039		4238.5	636	593	1,229	1,144	636	170	7,200
LB34	Jbeil	FSA	5,475	2,435	2,243		10,153	1,523	1,421	2,944	2,741	1,523	206	
LB62	Jezzine	FSA	1,660	2,365	1,196		5,221	783	731	1,514	1,410	783	409	
LB35	Kesrwane	FSA	3,527	2,745	1,233		7,505	1,126	1,051	2,177	2,026	1,126	300	
LB43	Marjaayoun	FSA	147	685	5,068		5900	885	826	1,711	1,593	885	236	8,400
LB23	Rachaya	FSA	1,378	1,360	961		3,699	555	518	1,073	999	555	148	
LB61	Saida	FSA	16,968	62,875	17,984		97,827	14,674	13,696	28,370	26,41	14,674	3,913	13,365
LB63	Sour	FSA	1,768	4,305	34,145		40,218	6,033	5,630	11,663	10,85	6,033	1,609	5,760
LB56	Tripoli	FSA	16,777	9,775	10,305		36,857	5,529	5,160	10,689	9,951	5,529	1,474	
LB24	West Bekaa	FSA	5,256	3,120	2,827		11,203	1,680	1,568	3,249	3,025	1,680	448	
LB25	Zahle	FSA	13,922	1,575	9,236		24,733	3,710	3,463	7,172	6,678	3,710	989	
LB57	Zgharta	FSA	5,270	155	17,648		23,073	3,461	3,230	6,691	6,230	3,461	923	

- FSAC Methodology:
- The FSAC is using October
  - Outside collective shelters
  - Overall response: SUM of NR: Cash assistance for S



Notes: Total number of people reached is calculated using the maximum number of people reached reported at district level across sectors.



## **ERNA Updates**

*Jamil El Khoury, AAWG Co-Chair and Research Officer (UNICEF)*



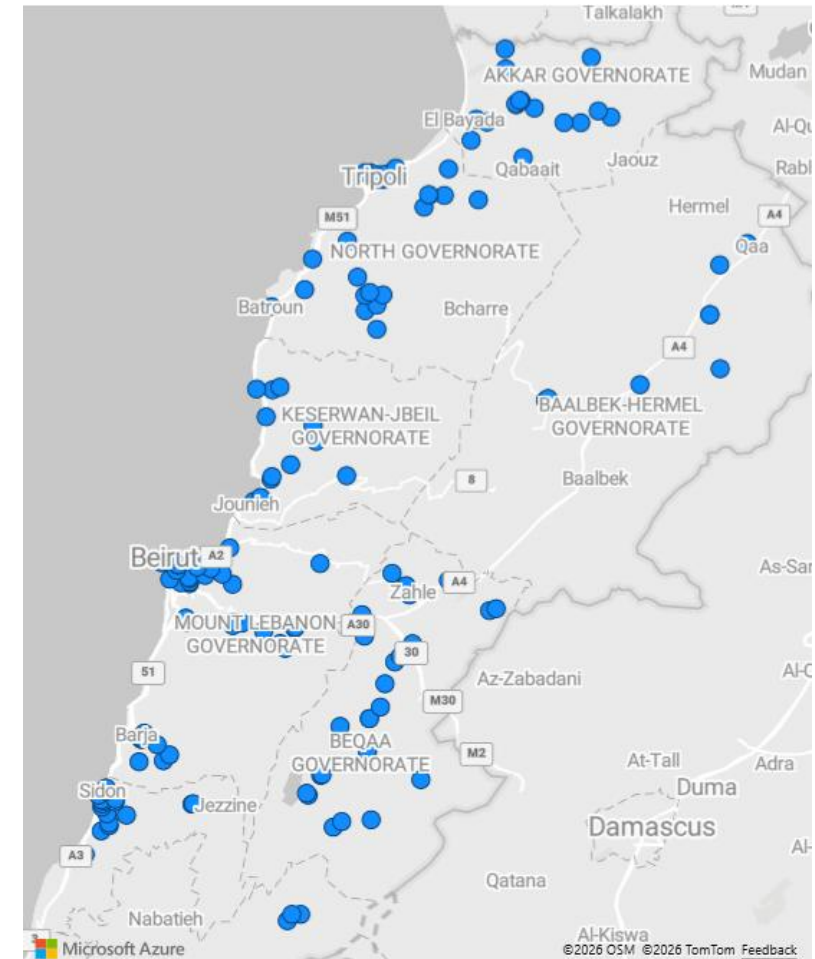
# GBV Safety Audit Findings

*Shrouq Almanaseer, GBV WG IM Specialist (UNFPA)*

# GBV Safety Audit

## Methodology and Coordination

- The initial report covers **180 collective assessed shelters** with only validated and non-duplicated data used for the final analysis.
- It covers the period of 16 March and 20 April 2026.
- The data was collected with the help of **18 GBV actors** in Lebanon across **8 Governorates**.
- The analysis is based on qualitative and quantitative data.



# GBV Safety Audit

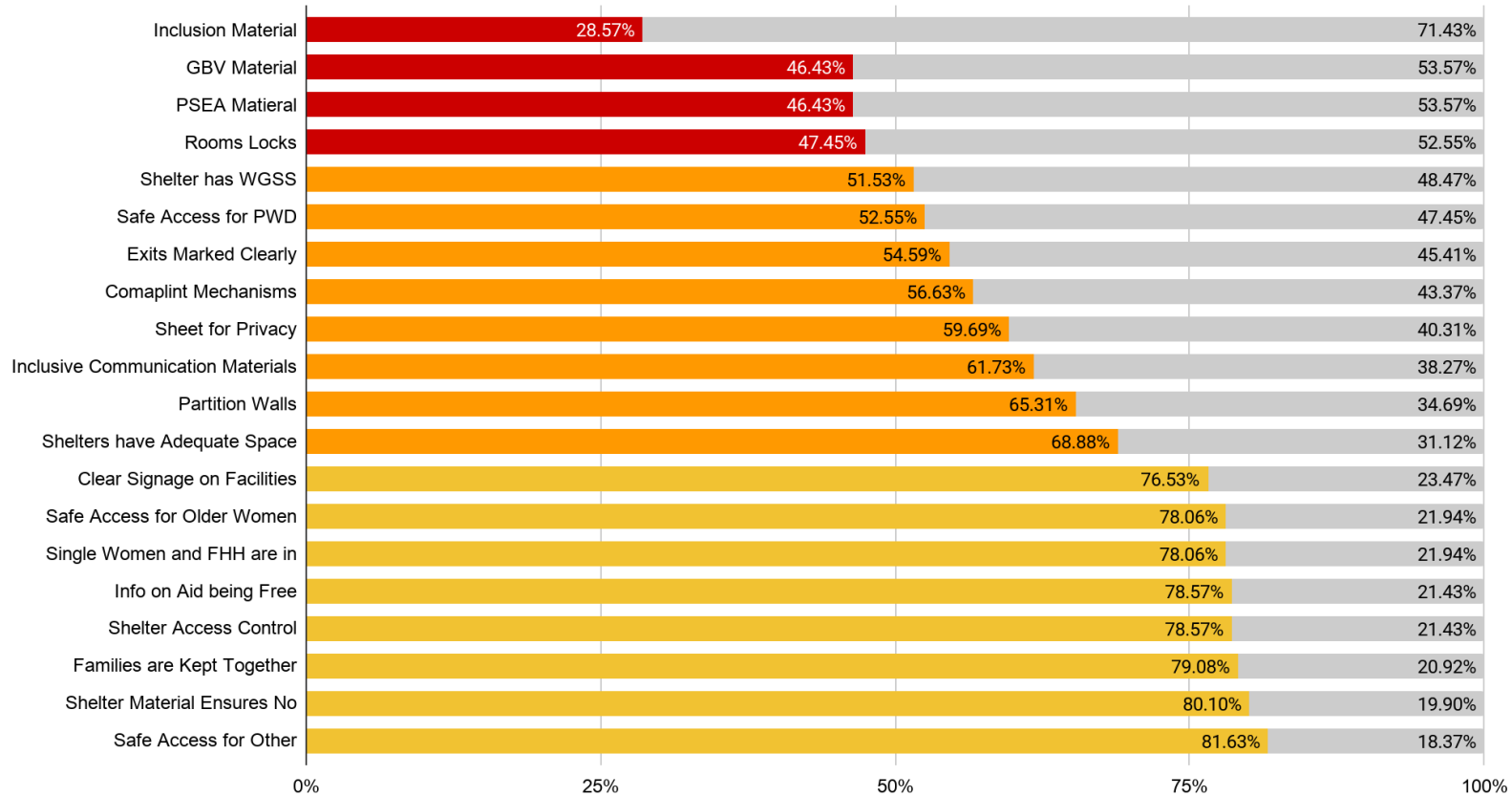
## Key Findings

---

- **Shelters Layout.** (91.8%) of sites report safe walkways, and (82.7%) are adequately lit, leaving (17.3%) of sites not adequately lit.
- **Privacy.** Less than half of sites (47.5%) have locks on rooms. Shelters are overcrowded, but partitioning reaches only 65.3%, and just 55% offer dedicated safe spaces for women and girls.
- **GBV risks in WASH facilities.** Privacy is present at (85.6%) of the sites and sex-segregated Latrines are only present in (78.2%).
- **Physical access.** Only 51.7% of the sites being accessible for persons with disabilities.
- **Information visibility.** GBV and PSEA materials were visible in only about half of shelters (49.7% and 50.3%) and in about half of WASH areas (49.1% and 49.4%).
- **Lack of Inclusion/disability awareness materials** (such as posters and pamphlets) at sites, with 71% of the sites not having any awareness material displayed inside the shelter or any WASH facilities. Lack of GBV awareness materials in the shelters, and PSEA materials in both the shelters and WASH facilities in 54% of the sites.

# GBV Risks Observed

## Shelter



**Nearly half of shelters lack internal locks**

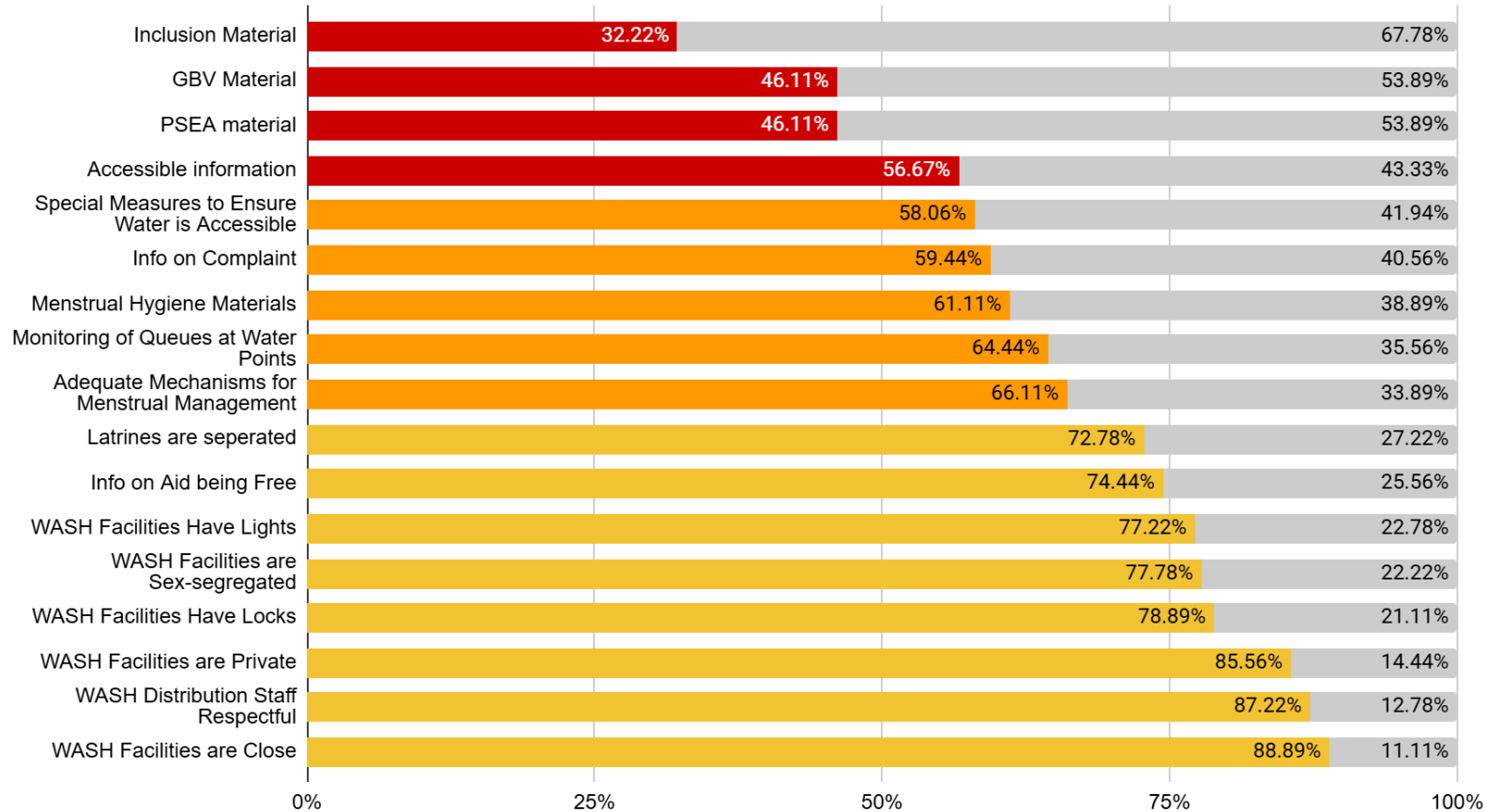
**1 in 3 shelters lack adequate partitioning**

**1 in 3 shelters are overcrowded**

**Safe spaces missing in almost half of sites**

# GBV Risks Observed

## WaSH facilities



**27% of the Latrines are not with separated entries, and 22% are not sex segregated, 21% does not have locks**

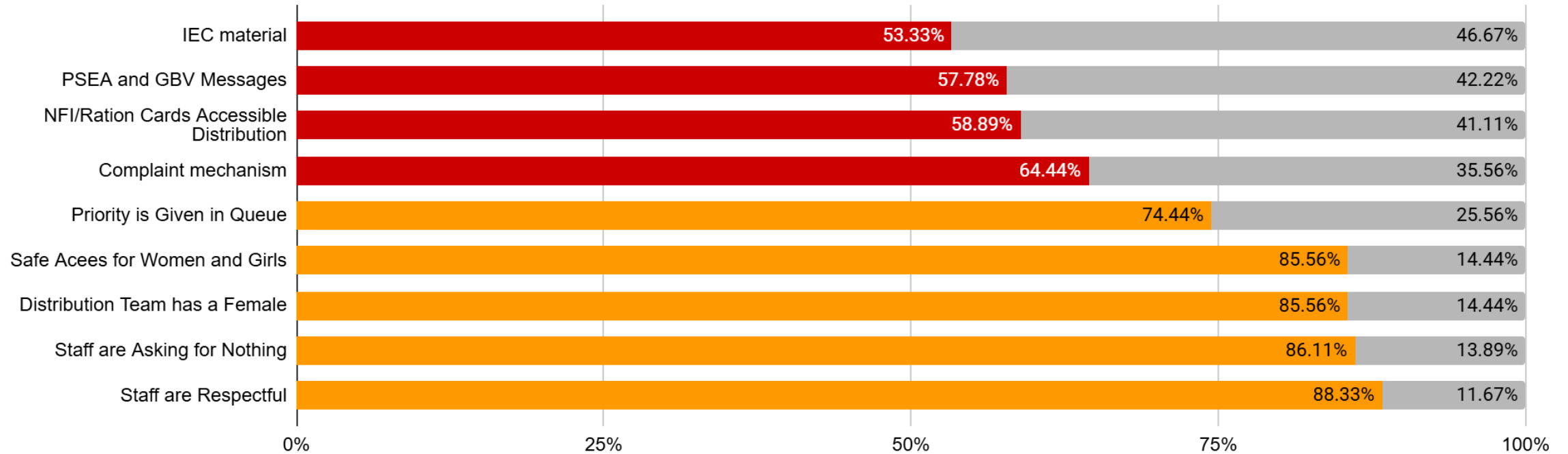
**Access to water limited (42%)**

**22% of WASH facilities does not have adequate light**

**Reports of men showering in female bathrooms**

# GBV Risks Observed

## Distributions



***Major Gap in IEC, PSEA, and GBV materials and messaging***

***Distributions are greatly inaccessible for people with disabilities***

***No visible complaint mechanisms in 35% of Distributions***

***1 in 3 distributions don't have queue management***

# GBV Risks Observed

## Geographic Risk Patterns

---

- **Beirut** – **Highest Overall Risk Profile** with severe gaps in privacy and internal safety (very low availability of locks and partitioning) and high population density. Low visibility of GBV/PSEA materials.
- **South** – **Weak Internal Protection Conditions** with low availability of locks (29.6%) and safe spaces (~38.5%) and only ~53.8% meet space standards indicating that overcrowding remains a key driver. Limited service delivery.
- **Baalbek El-Hermel** – **Critical Accessibility Gaps** with stronger performance on space standards. However, very low accessibility for persons with disabilities with protection risks driven by exclusion rather than density.
- **Mount Lebanon** – **Moderate but High-Impact Risk** with mixed performance that is relatively better space and partitioning but with persistent gaps in locks (~44.4%) and safe space coverage.
- **Bekaa & North** – **Relatively Better Conditions** (but not low risk) with stronger performance in: Space standard and information visibility (especially Bekaa). However, risks remain due to pre-existing vulnerabilities and high displacement pressure.
- **Akkar** – **Strong Site-Level Performance** with Contextual Risk and better indicators in locks, partitioning, WGSS. But broader context shows high vulnerability, and Increased GBV reporting trends.

# GBV Risks Observed

## *Most Affected Vulnerable Groups*

---

- **Adolescent Girls** require privacy, safe WASH access, and dedicated safe spaces and **45%** of sites lack safe spaces and have limited access to support & safe interaction.
- **FHHs & Single Women** - **20%** of sites report lack of separation from men. Even when separated, lack of locks/partitioning still compromises their privacy.
- **Persons with Disabilities** - **36.4%** of sites don't have accessible WASH facilities. Barriers: stairs, upper floors, lack of adaptations. Physical exclusion from basic services and increased dependency.
- **Older women** face a distinct combination of mobility, safety, and dignity-related risks. Shelter access is lower for them than for the general population, with only **77.8%** of sites safely accessible
- **Pregnant and Lactating Women** In overcrowded, low-privacy settings sometimes distant WASH facilities, and limited access to services women struggle to manage health, hygiene, rest, and infant care safely.
- **Children** reported absence of safe and structured spaces for children (incl. girls) in many shelters. With lack of privacy, stressful living conditions, and reduced access to safe play or support spaces.
- **Other Groups** include female caregivers that face compounded burdens in navigating overcrowded, under-equipped environments while maintaining privacy and safety for dependents.

# Recommendations

## *Overall and Sector-Specific Actions*

---

### **Priorities, Solutions, and Recommendations**

1. **Prioritize privacy and safety in shelters:** Install locks, improve partitioning, and reduce overcrowding; Expand safe spaces, especially in high-risk areas.
2. **Strengthen communication and inclusion:** Standardize GBV, PSEA, and complaints information visibility across shelters and WASH facilities.
3. **Adopt a risk-based targeting approach:** by prioritizing sites with overcrowding, lack of privacy, weak information visibility, and poor accessibility

### **Sector-Specific Actions**

1. **Shelter & Site Management:** Upgrade privacy infrastructure (locks, partitions, layout adjustments); Integrate protection standards into site management practices
2. **WASH:** Improve lighting, locks, and sex-segregation; Ensure accessible facilities, especially in multi-storey shelters; Use WASH points for GBV/PSEA messaging
3. **Basic Assistance & Distribution:** Maintain safe distribution practices while improving complaints systems and visibility; Introduce priority access and support for vulnerable groups; Link distributions with protection messaging, and IEC visibility



# Humanitarian Notification System

*Fadel Saleh, Humanitarian Affairs Officer/Analyst (OCHA)*

# Humanitarian Notification System

## *Lebanon HNS – NLR Movements*

---

In light of the above message, OCHA continues with the following HNS modality adjustments during the ceasefire period:

- NLR: discontinue movement notifications and maintain notification of static sites (countrywide) per the current HNS arrangements.
- SLR: maintain notification of movements south of the Litani River (entire SLR). While this continues to be available to partners, it remains on a voluntary basis.

OCHA will continue to monitor the situation closely and will share any further updates as they become available. Should you have any questions or require clarification, please do not hesitate to reach out.

# Humanitarian Notification System

*SLR Responses Overview (10 March - 20 April)*

---

## SLR Completion Overview

- 71 total notifications
- 34 completed in total (~48%)
  - 23 completed after positive clearance
  - 1 after limited response
  - 1 after late negative
  - 2 after negative response
  - 7 after no response

## SLR Response Breakdown

- 25 Negative (operational (~35%))
- 27 Positive (~38%)
- 4 Limited (~6%)
- 14 No Response (~20%)
- 1 Acknowledged but not coordinated (~1%)

# Humanitarian Notification System

*NLR Responses Overview (10 March - 20 April)*

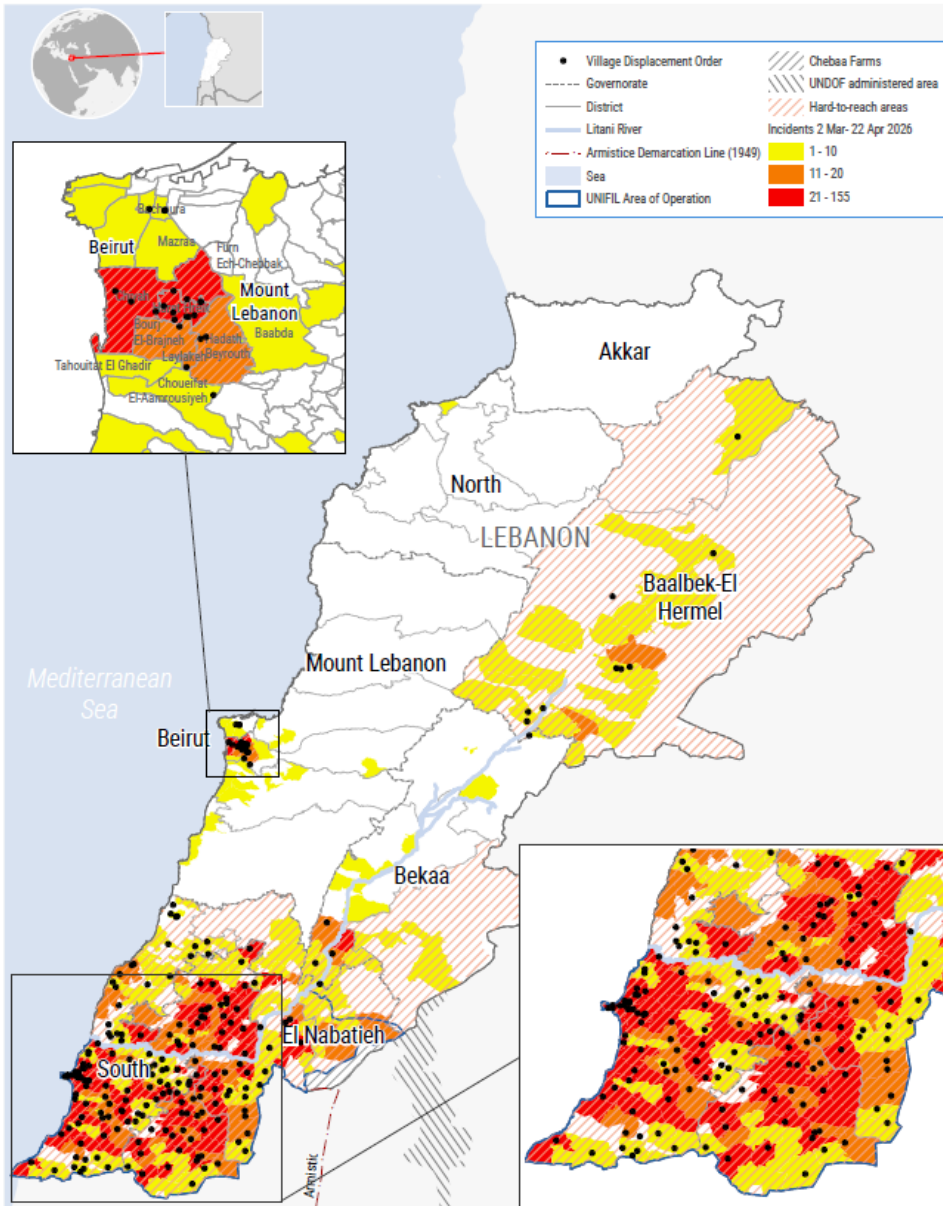
---

## NLR Completion Overview

- 51 notified movements
- 24 completed in total (~47%) :
  - 10 completed despite negative response
  - 1 proceeded with no response
  - 13 completed with positive clearance

## NLR Response Breakdown

- 37 Negative responses (~72%)
- 13 Positive (~25%)
- 1 No Response (~2%)



Based on one or more of these criteria the following areas have been classified as hard-to-reach:

- **South Governorate:** Entire governorate except for Saida city.
- **Nabatieh Governorate:** Entire governorate.
- **Baalbek-Hermel Governorate:** High levels of insecurity and armed presence, particularly in remote areas.
- **Bekaa Governorate:** Only South of Qaraoun lake.
- **Mount Lebanon:** Beirut Southern Suburbs only. Due to conflict intensity, armed presence and high tensions hindering access to this area.

# Humanitarian Notification System

## Operating Environment & Scenario Framing

### Lebanon – Current Access Context (April 2026)

#### Operating environment

- Large-scale hostilities occurred **2 March to 17 April 2026**, followed by a new ceasefire arrangement.
- Conflict impacts remain significant despite reduced fighting: damaged infrastructure, displacement legacies, and volatile front-line conditions.
- Access constraints remain **structural rather than incident-driven**.
- The **IDF-designated restricted area / “Yellow Line”** is now a central operational variable in the South of the Litani River (SLR).

#### Access constraints now structural, not incident-driven

- **Restricted area regime** (scope, enforcement patterns, movement permissions, civilian return limitations)
  - **Infrastructure viability** (bridges, roads, crossings, telecoms, services)
  - **Political-security trajectory** (ceasefire durability, negotiations, localized incidents, coercive measures)
- Simultaneous deterioration in any of the three could trigger rapid access contraction.

### Scenarios

#### Scenario 1: Fragile Ceasefire with Managed Restrictions

- Current most likely baseline following 17 April ceasefire
- Reduced large-scale hostilities, but persistent strikes/incidents remain possible
- Humanitarian access possible but constrained, especially inside / near restricted area
- Returns, reconstruction, and movement remain uneven and politically sensitive

#### Scenario 2: Renewed Israeli Escalation and Southern Isolation

- Triggered by ceasefire collapse, cross-border incident, or wider regional escalation
- Reversion to high-intensity strikes / military operations
- Expanded restricted zones and severe movement limitations across SLR
- Humanitarian presence becomes intermittent or unviable in some areas

#### Scenario 3: Internal Fragmentation and Localized Confrontation

- Overlay to external conflict dynamics
- Rising political, sectarian, or socioeconomic tensions inside Lebanon
- Localized violence, protests, roadblocks, coercive local actors
- Access becomes highly variable and negotiated locality-by-locality



**AoB**

# AoB (I)

## Lebanon Aid Tracking (LAT) 2026

---

- **Purpose**
  - Near real-time visibility on **funding allocations & gaps**
  - Supports **coordination, decision-making, and advocacy**
- **Scope (2026)**
  - **UN agencies & NGO partners only**
    - Focus on:
      - **LRP**
      - **Flash Appeal**
      - **Returns to Syria**
    - **Donors not requested to report**
- **Reporting**
  - Platform: **ActivityInfo**
  - Deadline: **30 April 2026 (COB)**
  - Focus on: **Funding, sector allocation, framework distribution**

# AoB (2)

## *Decrease in Regular Reporting on ActivityInfo*

---

**There has been a considerable decline in regular reporting on ActivityInfo.**

Please remind your sector partners to report sector activities on [ActivityInfo](#) as follows:

### **Regular Monthly Sector Reporting:**

The process for the regular monthly sector reporting remains unchanged. If your organization is implementing regular activities under the Lebanon Response Plan (LRP), please report your regular sector activities under the **“LEBANON - 01. 2026 LRP Sector Reporting”**.

**Deadline for Reporting: Monthly by the 15<sup>th</sup>.**

### **IDP Emergency Response Reporting:**

For reporting emergency activities, please follow the steps below. The information feeds into DRM dashboard, and government briefings.

Navigate to the **“LEBANON - 01. 2026 LRP Sector Reporting”** database. If you do not see the folder, please contact the sector Information Management Officer to request access.

Click on the **“40- IDP Response Tracking Tool”**.

Click on the **“01- 2026 Daily IDP CS Response Tracking Tool”** to add a record based on the site and location.

**Frequency of Reporting: Daily by 16:00 pm.**



Bye Bye! ♡



Good luck,  
Hussein!

We will miss you!



Thank You