

Overview

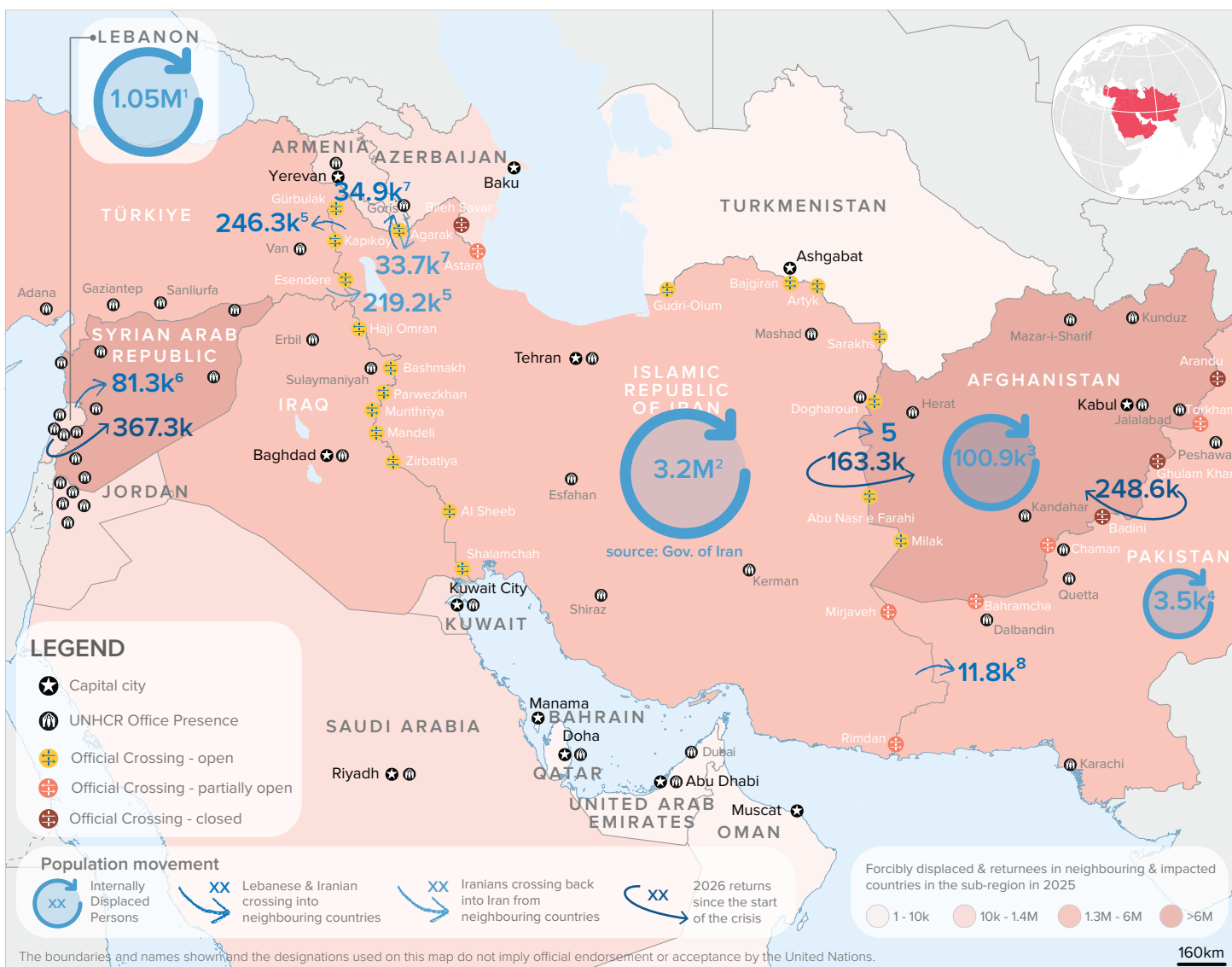
Escalating hostilities across Asia and the Middle East have led to a deterioration in the humanitarian situation. The affected areas already host 24.3 million forcibly displaced people, many of whom, alongside host communities, face significant protection risks and humanitarian needs.

With limited funding, many countries are struggling to meet existing needs, making it increasingly difficult to absorb additional pressures and support newly displaced populations.

Protection needs are rising, alongside heightened risk of internal displacement, new cross-border outflows, and onward movements to neighbouring countries.

An inter-agency emergency response has been launched to address urgent needs across the region. In Iran, [the Flash Refugee Response Plan](#) targets 1.65 million Afghan and Iraqi refugees and others in need of international protection, alongside 1 million host community members and 150,000 Afghans of other status. In Lebanon, a USD 308.3 million [Flash Appeal](#) aims to support 1 million people with lifesaving assistance and protection.

Situation Overview



Crossings to Syria (Syrian returnees and Lebanese nationals) are as of 18 May, Crossings to/from Armenia and Afghan returnee estimates (from Iran and Pakistan) are as of 16 May; crossings to/from Türkiye and crossings into Pakistan are as of 14 May, Afghan IDPs are as of 27 April, Lebanese IDPs are as of 1 April, Iran IDPs are as of 30 March and Pakistan IDPs are as of mid-March .

¹Source: Government of Lebanon. ²Source: Government of Iran. ³Source: OCHA Afghanistan. ⁴Source: Government of Pakistan.

⁵Source: UNHCR. Some Iranian nationals may be entering Türkiye under the visa-free short-term stay regime (up to 90 days). Such movements may reflect precautionary or temporary travel while individuals assess the situation in Iran. ⁶ Source: UNHCR and Government of Syria. ⁷ Source: UNHCR estimates based on triangulation of information. Official statistics shared by the Government of Armenia indicate 18,300 entries to Armenia and 17,500 from Türkiye to Iran, between 28 Feb and 15 April . ⁸IOM-UNHCR Joint border monitoring in Pakistan.

Population Movements

Lebanese refugees



81,300
Lebanese refugees arrived in Syria

Since the onset of the crisis, the number of Lebanese refugees arriving in Syria has increased, with arrivals averaging around 1,000 individuals per day.

Border Crossings of Iranian Nationals to / from neighboring countries



293,000
Iranian nationals crossed into neighbouring countries

Türkiye	246,300
Armenia	34,900
Pakistan	11,800



252,900
Iranian nationals crossed back into Iran from neighbouring countries

Türkiye	219,200
Armenia	33,700
Pakistan	n/a

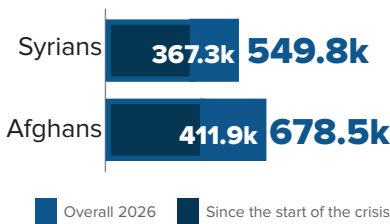
UNHCR considers that Iranian nationals outside the country – whether already present in or newly arriving to third countries – may have international protection needs on account of the armed hostilities in Iran, or other reasons.

The number of Iranians entering **Türkiye** remains below pre-conflict levels. These figures do not necessarily indicate permanent departures, as available data do not clearly distinguish between those who remained and those who later returned to Iran. For some Iranian nationals entering Türkiye under the visa-free regime (up to 90 days), movements may reflect routine travel, such as visits, transit to catch a flight, or precautionary trips while they assess the situation in Iran.

In **Armenia**, crossings remain broadly balanced, indicating continued regular two-way movements, without a significant surge in arrivals. In **Azerbaijan**, land borders remain closed due to public health restrictions except for commercial traffic and limited exceptions such as third-country evacuations.

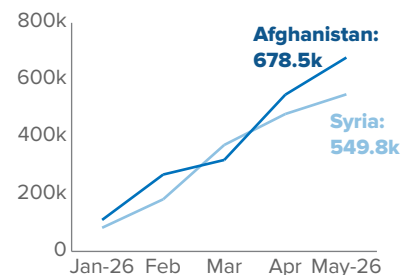
In **Pakistan**, as per IOM and UNHCR joint border monitoring, some **11,800 Iranians crossed** between 1 March and 14 May mainly via Taftan for routine business or family visits. Movements between **Iraq** and Iran remain routine; border conditions are fluid.

Afghan and Syrian returnees⁹

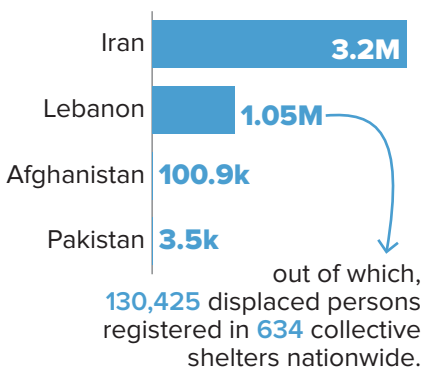


Afghan return¹⁰ figures are preliminary and expected to fluctuate upon validation on a weekly basis.

Syrians crossing the border include those who had planned to return before the conflict and others compelled to cross due to current conditions. **91,881** reported intending to return permanently.



New IDPs since the start of the crisis



According to the Government of Iran, **as of 30 March, around 3.2 million people** had temporarily relocated in the country, resulting in one of the largest internal relocations in Iran in recent decades. With public order remaining largely stable since then, increasing numbers of people are likely returning to their places of habitual residence.

In Afghanistan, an estimated **100,900 people** have been newly displaced across six provinces, mostly in **Khost, Nangarhar and Kunar provinces, with about 27% in each province**, followed by 18% in Paktia.

⁹Returnees' includes people returning under adverse circumstances due to the situation in countries of asylum; for Syrians, return dynamics vary and some returns may be temporary (including households where some family members remain in Lebanon).

¹⁰Afghan returns is an umbrella term that includes all returns including deportations, assisted repatriation, and other returns of Afghans of all statuses such as PoR, ACC, Amayesh cardholders, headcounted slip holders and undocumented, excluding passport holders.

Afghan refugees in Iran

Iran continues to host **1.65M** refugees and others in need of international protection. The [analysis of calls](#) received through the UNHCR helpline from 8 April to 8 May, shows a marked shift in refugees' needs before and after the ceasefire, with concerns evolving from primarily conflict-related risks to increasingly overlapping socioeconomic, legal, and service-access challenges. Overall, the protection risks are reinforcing each other, and driving a progressive erosion of resilience, underscoring the need for responses that address both immediate needs and underlying structural drivers of vulnerability.

Basic needs, cash and livelihoods

Callers increasingly **reported loss of income, unpaid wages, and widespread unemployment**, particularly in factories, construction, hospitality, and informal sectors, driven by business closures and reduced hiring of Afghans.

Healthcare

Healthcare access is constrained by **unaffordable renewal-related costs, including mandatory health insurance**. These barriers reduced access to essential services and compounded existing economic pressures for vulnerable Afghan households.

Documentation, legal stay and risk of deportation

Callers linked Amayesh renewal costs to fear of losing legal status, reduced service access and deportation risks. **Documentation barriers were key drivers of vulnerability, not isolated administrative issues.**

Profiles

50% Iranians crossing to Türkiye are **families**. Based on over 3,800 interviews conducted by UNHCR with arriving Iranian nationals between 4 March and 17 May, the age and gender breakdown was as follows: **63% adult men, 27% adult women, 5% girls, and 5% boys**.

In **Lebanon**, **35%** of IDPs are estimated to be **children**¹¹ where as in Iran **60% are women and children**.

In **Afghanistan**, **an estimated 73% of the IDPs are women and children**. Protection concerns have arisen in displacement sites including involuntary returns of vulnerable IDP families.¹²

In **Pakistan**, IDPs who had temporarily relocated to safer areas, which were district administration-established IDP centres in Drosh and Akroye, have since returned to their places of habitual residence following the stabilization of the security situation. **57% were children and 28% were women**.




Returns to Afghanistan

Among the Afghan returnees assisted by UNHCR in Afghanistan since the start of the crisis, **women and children constitute 82% of those returning from Pakistan and 55% of those returning from Iran**.

Top Provinces of intended returns



Top 3 needs of returnees in Afghanistan

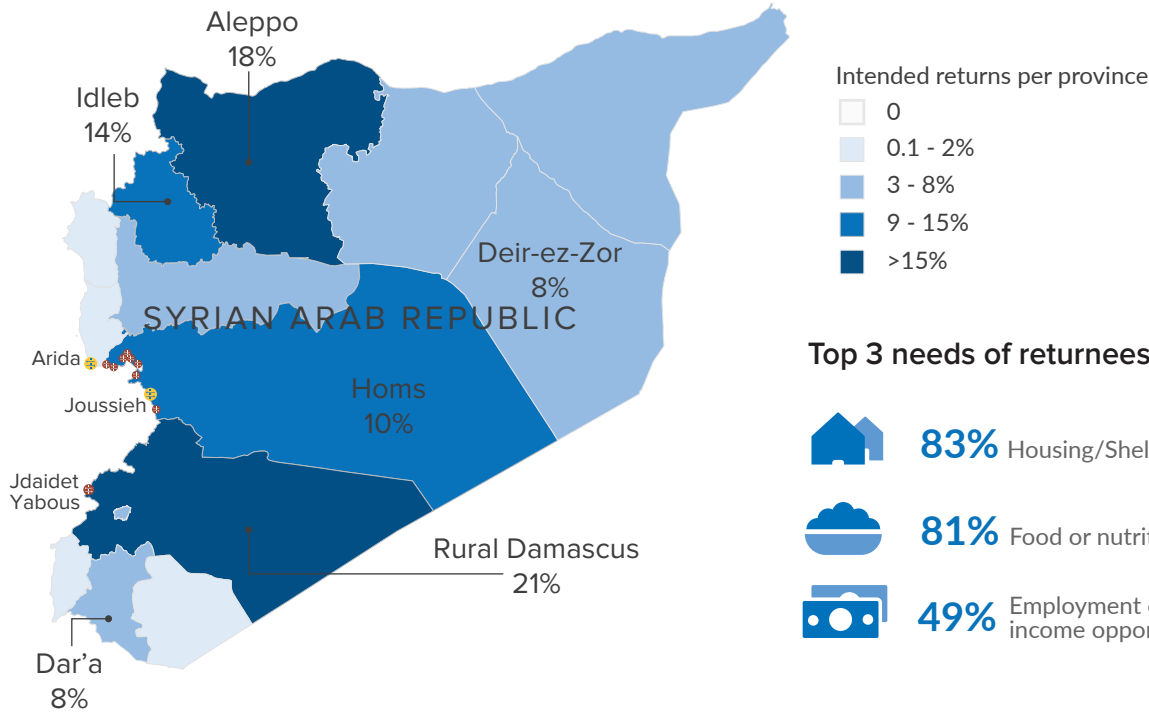
-  **79%** Financial support
-  **54%** Housing/Accommodation
-  **49%** Core relief items

¹¹Source: UNICEF. ¹²Source: OCHA Afghanistan.

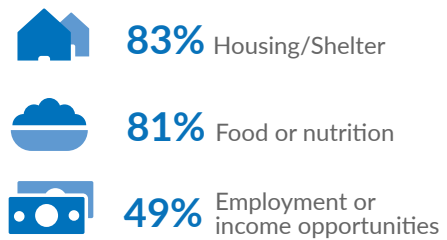
Returns to Syria

Crossings into Syria are primarily **family-based**, with Syrians comprising the majority of those returning. Among the Syrian families interviewed, **females account for approximately 53%**.

Top Provinces of intended returns



Top 3 needs of returnees in Syria



UNHCR Preparedness and Coordination

UNHCR is leading cross-regional preparedness and response coordination for potential cross-border refugee movements, working with authorities, UN agencies and humanitarian partners. The Regional Bureaux for Asia and the Pacific, the Middle East and North Africa, and Europe are working closely with country operations to monitor developments and advance preparedness and response planning.

Should a response be required, emergency financial aid would be the primary assistance modality, supported by systems already in place in Afghanistan, Armenia, Iran, Iraq, Pakistan, and Türkiye and through our global stockpiles and UNHCR’s mechanism to reinforce staffing capacity.

Operational Presence



The boundaries and names shown and the designations used on this map do not imply official endorsement or acceptance by the United Nations.

Forcibly displaced persons & returnees in neighbouring & impacted countries in the sub-region in 2025. For more information on Forcibly Displaced definition and methodologies, click [here](#).