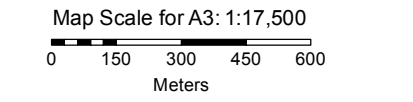




- Map Legend**
- Drilled Shallow Wells
 - Pump House
 - Borehole, Shallow Jet Well, or SWAT System
 - Storage Tank
 - Tapstand
 - ACTED Site Office
 - MSF Hospital
 - MSF Mobile Clinics
 - INTERSOS Schools
 - Community Center
 - Grinding Mills
 - Market
 - UNHCR Tent
 - Shelter (other)
 - Original Camp Delineation
 - Maram Road
 - Dirt Road/Path
 - Diwan Areas
 - Camp Area (approximate)
 - Transit Site

Data Sources: Vector Data - UNHCR, INTERSOS, Oxfam, ACTED; Satellite Image - UNHCR
Coordinate System: GCS WGS 1984
Contact: michael.hopfensperger@acted.org

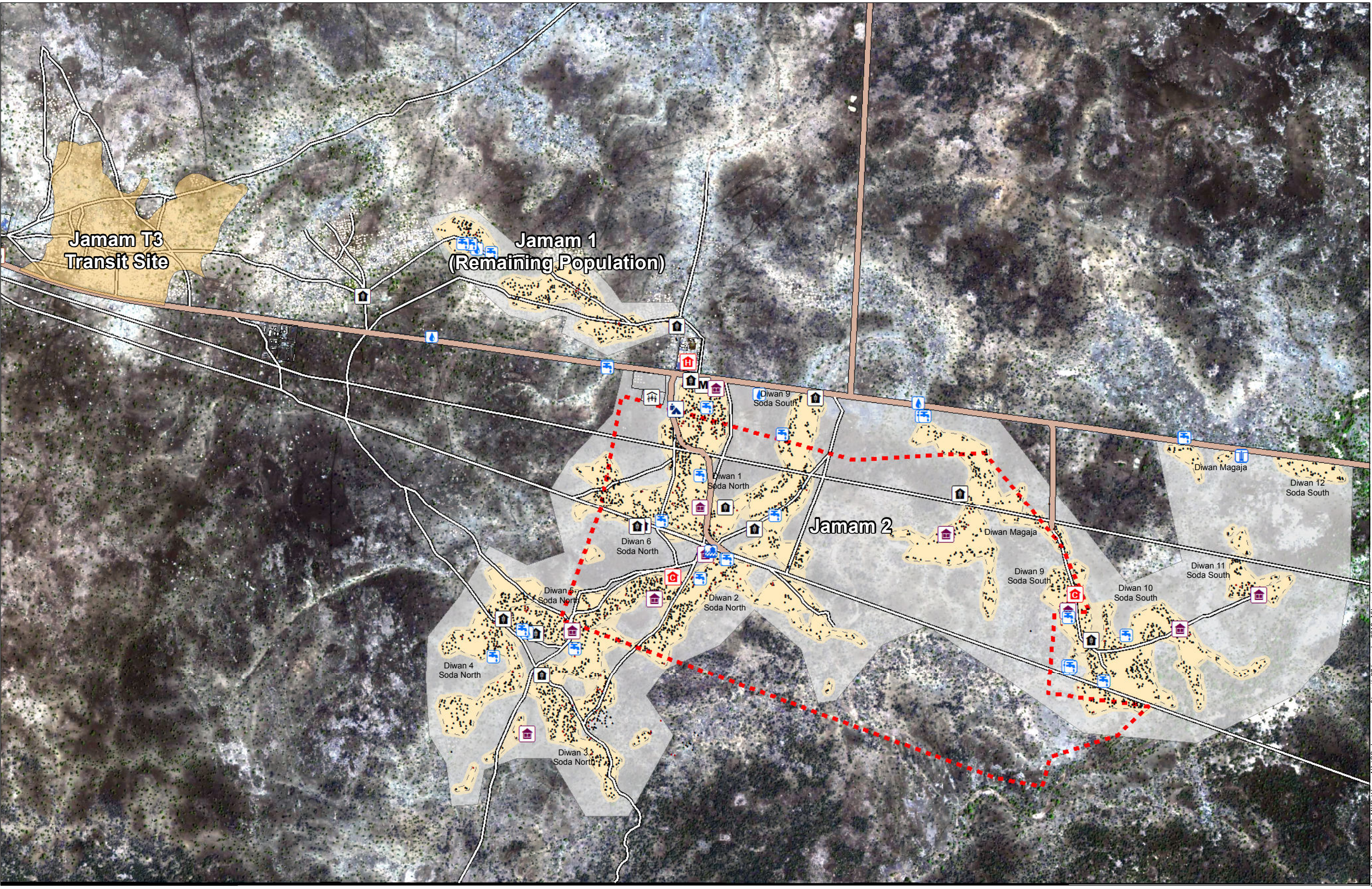


Note: Data, designations and boundaries contained on this map are not warranted to be error-free and do not imply acceptance by the REACH partners mentioned on this map.

This document has been produced with the financial assistance of UNHCR. The views expressed herein should not be taken, in any way, to reflect the official opinion of UNHCR.

Refugee Crisis in Upper Nile

Jamam Camp (Population 15,816 as of 11th Jan.)



Path: D:\ReachGIS\06_MXD\Upper Nile\SS_Jamam_camp&transit_27december2012_A31.mxd