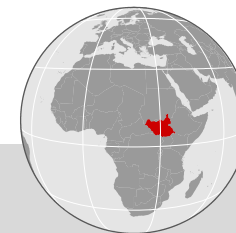




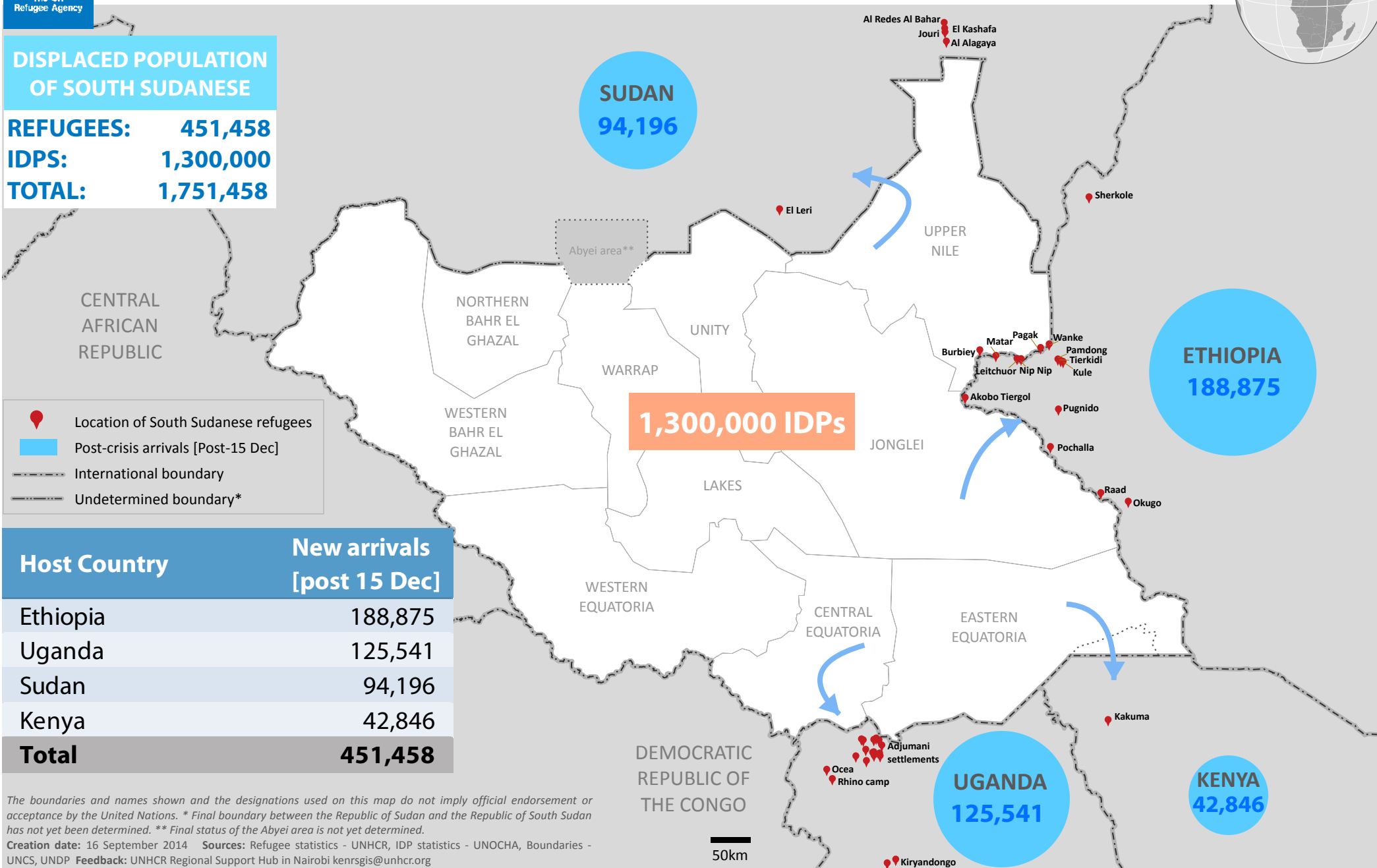
South Sudan Emergency: Regional overview of refugees from South Sudan

New arrivals since 15 Dec 2013 | as of 11 September 2014



DISPLACED POPULATION OF SOUTH SUDANESE

REFUGEES: 451,458
IDPS: 1,300,000
TOTAL: 1,751,458



Host Country	New arrivals [post 15 Dec]
Ethiopia	188,875
Uganda	125,541
Sudan	94,196
Kenya	42,846
Total	451,458

The boundaries and names shown and the designations used on this map do not imply official endorsement or acceptance by the United Nations. * Final boundary between the Republic of Sudan and the Republic of South Sudan has not yet been determined. ** Final status of the Abyei area is not yet determined.

Creation date: 16 September 2014 Sources: Refugee statistics - UNHCR, IDP statistics - UNOCHA, Boundaries - UNCS, UNDP Feedback: UNHCR Regional Support Hub in Nairobi kenrgis@unhcr.org

50km