

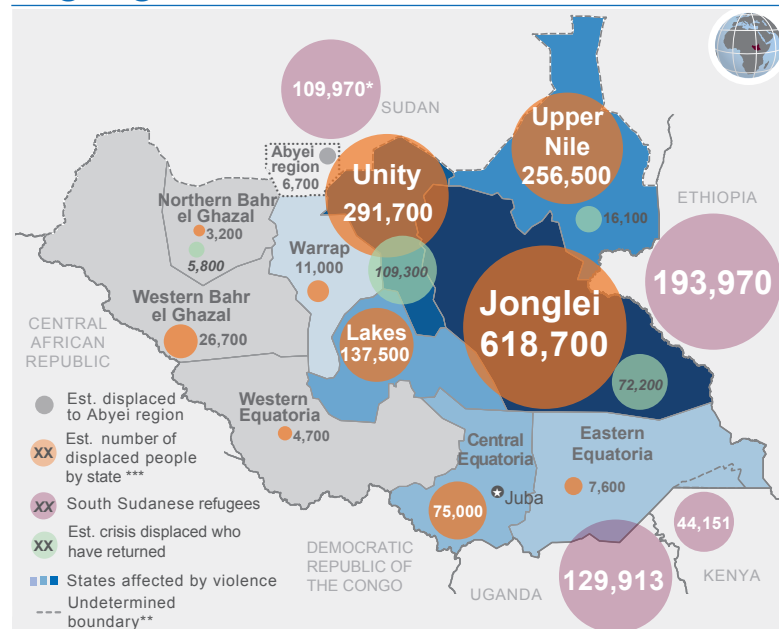
# South Sudan Crisis

Situation Report No. 63 (as of 21 November 2014)



This report was produced by OCHA South Sudan in collaboration with humanitarian partners. It covers the period from 14-21 November. The next report will be issued on or around 28 November 2014.

## Highlights



- UN Assistant Secretary-General for Humanitarian Affairs, Kyung-wha Kang, concluded a three-day mission to South Sudan, calling on all parties to the conflict to respect their ceasefire commitments, and urged for more international support to enable humanitarians to scale-up and expand critical aid operations.
- The security situation in the Protection of Civilians (PoC) sites in Malakal remained relatively calm, as community elders engaged the warring youth in a bid to defuse the tensions.
- Tensions remained high in the northern states of Jonglei, Unity and Upper Nile where sporadic fighting continued to be reported.

The boundaries and names shown on this map do not imply official endorsement or acceptance by the United Nations. \*\*Final boundary between the Republic of South Sudan and Republic of Sudan has not yet been determined. Final status of the Abyei area is not yet determined. \*\*\*New arrivals from South Sudan (NOT REFUGEES). \*\*\*\*Verification of the IDP & returned figures is a work in progress (12 October 2014). Data Sources: OCHA, UNMISS, IOM, UNHCR, RRC and partners. Refugee figures as of 14 November 2014 OCHA South Sudan, 14 November 2014

**3.8 million**

People to be assisted by the end of the year

**3.5 million**

People reached with humanitarian assistance\*

**1.91 million**

People displaced by conflict since December 2013

**1.44 million**

People internally displaced

\* This includes people internally displaced, refugees from other countries sheltering in South Sudan and other vulnerable communities who have received assistance since January 2014. This does not imply that the needs of these people have been comprehensively met.

## Situation overview

The security situation in the country remained relatively calm, except for the northern states of Jonglei, Upper Nile and Unity, where the situation remains tense and unpredictable. In Jonglei State, tensions remained high around Pigi/Canal, Fangak and Nyirol counties, with reports of intermittent active hostilities. The situation triggered the displacement of civilians towards Old Fangak, Nyirol and Ayod counties. More than 40,000 displaced people are reportedly sheltering in Pultruk, Nyirol County alone. Troop mobilization has been reported in Lankien area, with sporadic shooting related to the mobilization reported this week.

In Nassir County, Upper Nile State, skirmishes between armed groups continued, with reports of arson attacks on civilian houses. Security partners provided reinforcement works around the humanitarian hub and monitored the situation. In Malakal, the inter-communal tensions in the PoC sites were reportedly calm and partners observed a decrease in blockades, harassment and confiscation of items bought from the market. A mutual agreement on engagement of humanitarians and the displaced people was signed committing the community leaders to take an active role in sensitising the youth to desist from acts of violence and intimidation. Partners continued to monitor the situation to determine a resumption of non-life saving activities that were suspended due to insecurity.

In Unity State, about 10,000 people, mostly women and children from Southern Kordofan who fled recent fighting in the Nuba Mountains are sheltering in Nhialdu and are in need of humanitarian assistance. The security situation in Bentiu and Rubkona remained calm but unpredictable. An Inter-Agency Rapid Needs Assessment (IRNA) mission was conducted to identify the actual needs and appropriate response.

Source: OCHA Situation Reports, based on reports from humanitarian clusters

[www.unocha.org/south-sudan](http://www.unocha.org/south-sudan)

The mission of the United Nations Office for the Coordination of Humanitarian Affairs (OCHA) is to mobilize and coordinate effective and principled humanitarian action in partnership with national and international actors.

**Coordination Saves Lives**

## Humanitarian response

During her three-day visit to South Sudan, ASG Kyung-wha Kang visited communities affected by the crisis in Juba and Jonglei State, and also met with Government representatives and humanitarian partners to discuss ways of improving access and strengthening protection of civilians. Ms. Kang appreciated the challenging working environment, characterized by insecurity as well as recurring logistical and administrative constraints and called on the authorities to facilitate humanitarian access to the thousands of people in need, especially the more than half a million who are yet to receive assistance in hard to reach areas. Partners have amidst these challenges reached 92 per cent of the 3.8 million people targeted for assistance this year; helped avert famine, and brought under control a deadly cholera outbreak.

**\$600 million needed  
before next rainy  
season in May 2015**

Aid agencies are planning for 2015, and urgently require US\$600 million by February to kick-start next year's operations. ASG Khang noted that the dry season is an opportune moment for access, as roads become passable, and investing in the response now will ensure that more lives are saved in a more cost effective manner. The funding is critical for supporting the pre-positioning of life-saving and livelihood supplies, and carrying out key repairs to roads and airstrips, to help aid workers scale-up and expand the aid operation.

### Camp Coordination and Camp Management

#### Needs

- Site management and planning, and provision of coordinated assistance to the targeted population remained a major concern. Partners estimate that some 1.44 million people are in need countrywide, of whom 693,000 have been targeted. Support for the relocation of flood and conflict-affected people remained critical.

#### Response

**Response coverage:** Partners have reached 64 per cent (445,603 people) of the 693,000 people targeted until December.

- **Peace initiatives in Malakal:** Partners reported reduced tensions in Malakal PoC sites. The blockade and harassment of staff at roadblocks was less evident this week. Community leaders from all the PoCs worked hard together to defuse tensions. Community leaders were given two days to sensitize the community and ensure peace in the PoC. Alcohol is reportedly a major contributing factor to the violence among the youth. Shelters along the road to PoC 1 were cleared to enhance security in that area. Partners continued to monitor the situation.
- **Relocation of displaced in Juba:** The relocation of services to UN House PoC 3 continued. Community sensitization was conducted, targeting around 3,200 individuals. Monitoring of new arrivals continued due to the influx of new arrivals from Unity State during the past two weeks. A transit site is being constructed for new arrivals.
- **Displacement monitoring:** The displacement tracking monitoring (DTM) report VI was completed. During the month of October DTM assessed 60 displacement sites and 44 host communities in nine states. Some 543,618 displaced people were monitored in all these sites; 32 per cent of whom were from the host communities.

#### Gaps and constraints

- Partners reported that the next general food distribution scheduled for 24 November is dependent on the security situation in Malakal.

### Education

#### Needs

- Advocacy for non-occupation of schools by armed groups and displaced people, and for payment of teachers' salaries and incentives, to allow learning to resume.

-

- Establishment of temporary learning spaces, provide learning, teaching and recreational materials for children to continue with their education.
- Logistical support for the delivery of learning materials and supplies in hard-to reach areas.

### Response

- **Response coverage:** Partners have reached 70 per cent (192,661 people) of the 275,000 people targeted for education assistance. Of those reached, 86,509 (42.4 per cent) are girls, while 106,152 are boys.
- **Education facilities and materials:** Partners provided 843 textbooks to 10 primary schools in Old Fangak county, Jonglei State. This will reinforce the efforts of the volunteering teachers in improving the quality of education in the area.
- Partners established and inaugurated a sports center at PoC 3 site in Juba. The project will be used to mobilize the young people through sports, a means of disseminating a culture of peace and non-violence within the camp and beyond.

### Gap and constraints

Over 86,500 girls  
reached

- **Insecurity in Malakal; burning of textbooks:** The tensions and insecurity in Malakal town continued to hinder education activities, with the most recent being the burning of 11 containers of textbooks meant for distribution in several locations. Investigations have been launched into the incident.
- **Delay/failure to pay teachers' salaries** continued to limit education activities as teachers were still not showing up for duty. Education partners continued to advocate with relevant authorities for a sustainable solution; while some partners provided short term incentives to teachers to boost their efforts in facilitating learning.
- **School occupation:** The current floods in many parts of the country especially in Warrap State continued to deny children access to schools. 36 schools in Tonj East are reportedly occupied by people displaced by floods, denying nearly 40,000 children access to learning. In total, some 127 schools in several locations are occupied by displaced people and armed forces (38 by armed groups, 84 by displaced people, 2 both displaced people and armed forces and 3 school status unknown). About 500 children (105 females) and 56 teachers (13 females) have also been forced out of school in Mvolo County due to the floods in Western Equatoria State. This leaves children unable to access education and exposed them to abuse.
- **Disruption of education due to lack of secondary schools:** While partners have supported facilitation of the primary leaving exams in Warrap State, there is no transition strategy for these children as secondary schools are neither established nor supported in many parts of the state.

## Emergency Telecommunication

### Needs

- Vital frontline services to over 130 humanitarian partners, in the areas of security telecommunication, data and voice services (internet); technical support (help desk support and management) and training (capacity building in ICT).

### Response

- Partners programmed 45 radios for two UN agencies and five NGOs this week.
- Partners conducted a mission to Bor, Jonglei State, to improve on the signal coverage for humanitarian partners at the humanitarian hub.
- Partners conducted a mission to Mingkaman to improve on user support and general ICT support.
- **Funding gaps:** Funding for cluster activities for 2014 has been exhausted and mobilization of additional funds still a major challenge. The cluster is 39 per cent funded and requires \$2.8 million to meet its target for 2014.
- **Recurring:** Procurement of telecommunications equipment continued to be challenging as lengthy import procedures and the volatile security situation frequently cause significant delays.

## Food Security and Livelihoods

### Needs

- An estimated 3.3 million people have been targeted for emergency livelihoods support and 2.4 million targeted for improved access to food by December.

### Response

- **Food distribution:** Food distributions were completed in Mayendit, Unity State; Mading and Mathiang, Upper Nile State, for 21,321, 8,000 and 12,589 people respectively; while distributions continued in Kiechkuon, Gai reang, Whajtak and Walgak, all in Upper Nile State; Jiech and Old Fangak in Jonglei State and Nyal in Unity State.
- **Livelihood support:** Over the past week, vaccines were provided to partners to reach 20,000 animals in Aweil West, Northern Bahr el Ghazal; 65,000 animals in Duk, Jonglei State and 65,000 animals in the Abyei area.
- **Emergency response and capacity building:** Partners installed the first solar-powered refrigerators (since the crisis) for the cold chain facilities in Bor, Jonglei State and Melut, Upper Nile State. This is aimed at re-establishing the cold chain systems and rebuilding cold chain hubs that were destroyed during the crisis.
- **Monitoring food security:** Partners were deployed countrywide to conduct the 14th round of the Food Security Monitoring System (FSMS) survey.

### Gaps and constraints

- Insecurity has resulted in the suspension or delay of activities in several locations. Food distribution in Malakal will be dependent on the security situation in the area. Partners are working with security teams to facilitate ongoing life-saving operations in several locations.

## Health

### Needs

- Health-related emergencies, including prevention of communicable and water-borne diseases, provision of reproductive health services for pregnant mothers, and dissemination of GBV prevention messages to the affected people.
- Pipeline support for gaps in supplies for medicines and reproductive health commodities.
- Malaria, acute respiratory infections and acute watery diarrhea continue to account for the highest proportion of the reported disease burden among the displaced people.
- Mental health and psychosocial support for the displaced and vulnerable populations.

### Response

- **Response coverage:** An estimated 3.7 million medical consultations were conducted countrywide as of November 2014. More than 5.8 million people are in need of various forms of medical support in South Sudan, with partners having targeted 3.1 million, by December 2014.
- **Nutrition screening:** Surge teams were deployed to support nutrition screening, polio & measles immunization, and emergency primary health care services.
- **Outbreak and emergency response:**
  - **Cholera:** Health team visited Eastern Equatoria State to evaluate reports of ongoing cholera transmission; 13 suspected cases were being investigated in Kapoeta South.
  - **Ebola:** Continued support for social mobilization messaging and prevention screening at airport and land border entry points.
  - **Polio:** Intensive coverage for polio vaccination continued in Rubkona and Guit counties in Unity State.

### HEALTH INDICATORS

	Reporting week (Wk 46)	Cumulative since Jan.
People reached with medical interventions	99,481	3,701,968
Outpatient consultations conducted	96,851	2,095,567
Cholera Deaths, all locations	0	161
Cholera Cases, all counties	0	6,301
Hepatitis E cases, Mingkaman and Bentiu	1	124
Hepatitis E deaths	0	4
Kala azar cases (Wks 45-46)	632	6,854
Kala azar deaths	16	190
Reproductive health: Women provided ANC services	2,232	82,484
Women with assisted deliveries	354	13,716
Women with caesarian sections	44	1,392
People reached with GBV messages	5,303	146,600

Source: Health Cluster, as of 21 November, 2014

**-Response to Kala-azar:** 632 new cases and 16 deaths were reported this week bringing the total cases for 2014 to 6,854 cases and 190 deaths, with the majority in Jonglei State. The cases in 2014 have nearly tripled those in 2013, when there were 2,253 cases and 70 deaths. Two additional treatment sites were opened and response is ongoing in 17 centres. Partners supported three sites in Unity, eight in Jonglei, four in Upper Nile states.

### Gaps and constraints

- **Funding:** The health cluster received 89 per cent funding but requires \$8.7 million to sustain operations until December.
- **Logistical constraints:** Partners reported shortage of medicines and antimalarials in Unity, Upper Nile and Jonglei states because of delivery constraints arising from poor road access/flooding and insecurity. Urgent delivery is needed to Northern Bahr el Ghazal, Warrap and Abyei area, for the emergency level of malaria cases continuing to present at clinics. Logistics cluster supported deliveries to Ayod county.
- **Limited access to health services and insufficient personnel** for the displaced population, coupled with **shortage of nutritional/food supplements** for patients in Kala-azar endemic areas pose a major challenge to the response team. Additional response locations for diagnosis and treatment of Kala Azar in the affected counties and for HIV/AIDS and tuberculosis in all emergency response locations is critical.



### Logistics

#### Needs

- Aid agencies continued to be in need of storage and transportation services, including airlift capacity, especially along insecure routes and areas where the infrastructure was damaged by floods during the rainy season.

#### Response

- **Supplies airlifted:** This week, over 112 metric tonnes of humanitarian supplies were airlifted on behalf of 12 organizations to Jonglei State (Akobo, Jiech, Kuach, Lankien, Mogok, Old Fangak, Pagil, Waat); Lakes State (Rumbek); Unity State (Bentiu, Ganyiel, Guit, Koch) and Upper Nile State (Jikmir, Maban, Malakal, Mandeng, Pagak).
- On 15 November, partners made a first attempt and delivered cargo to Akobo, Jonglei State, using a fixed wing aircraft. The airstrip still needs further drying out and will be serviced by the Mi26 in the meantime.
- Deliveries to Bentiu, Unity State, with the fixed wings continued. Since the first attempt on 7 November, over 57 metric tonnes have been delivered using the fixed wings alone. Combined with frequent rotations of the MI26, significant increase in the daily uplift capacity has been realised.
- Lankien airstrip, Jonglei State, has dried up making it possible to land a fixed wing.

### Gaps and constraints

- **Poor road access:** Access by road remained constrained since most of the roads have not dried up from the rainy season. The latest access constraints map can be found here: <http://www.logcluster.org/map/access-constraints-map-14-november-2014>



### Mine Action

#### Needs

- The ongoing conflict has created new risks of explosive hazards particularly in the three conflict-affected states of Unity, Upper Nile and Jonglei, including anti-tank land mines and unexploded ordnance (UXO). Elsewhere in the country the risks of UXOs from previous conflicts remain. These remained a direct threat to the safe delivery of humanitarian aid and to the safety of civilians and need to be cleared.

#### Response

- On 17 November, partners investigated a reported Explosive Remnant of War (ERW) at the Malakal airport. The item was removed and the airstrip was deemed safe for air operations.
- On 18 November, partners conducted a non-technical survey in Bentiu town in support of the INGO partners. Three out of 14 boreholes were checked for ERWs. Due to security concerns the investigation was cut short and will continue once the situation allows.
- Mine action cluster team destroyed an anti-personnel mine on Pageri road, Eastern Equatoria State. The team also further investigated and cleared the area.



## Gaps and constraints

- Mine action activities in Jonglei, Unity and Upper Nile states remained challenging due to insecurity, restrictions on movement and poor weather conditions.



## Multi-sector response to refugees

### Needs

- Partners have reached 97 per cent (246,433 people) of the 251,950 people targeted.

### Response

- Two new **Child Friendly Spaces (CFSs)** were opened in Ajoung Thok, for refugees and the host community. Meanwhile, upgrade of Koja CFS was completed with mud bricks and iron sheet roofing. The weekly attendance at the four CFSs in the camp increased due to the **measles campaign** conducted by partners at the CFS. The parents encouraged children to turn up in large numbers for vaccination and the result was an average of over 1,889 children at the CFS compared to 1,192 children the previous week.
- **Reproductive health responses:** In Ajoung Thok refugee camp, 13 women with special needs were supported with various materials to meet their personal needs. 1,135 women and girls within the reproductive age received dignity kits. While routine community education through door-to-door and men information dissemination continued; 114 participants (88 females, 26 males) were reached.
- **HIV/AIDS and Ebola virus disease awareness campaigns** are ongoing, and partners are preparing to spearhead the activities on World Aids Day. The activities will take place in Ajoung Thok, Pariang and Yida respectively and involve awareness activities, games, distribution of caps and T-shirts facilitated by partners, refugees and host populations.

## Gaps and constraints

- In Western Equatoria State, addressing GBV issues is a major challenge in the settlements due to the **absence of a legal framework** and implementation of **strong cultural beliefs**.



## Nutrition

### Needs

- Nutrition situation remains dire across the country due to the escalation in conflict that has affected the provision and access to nutrition services; interruption in delivery of therapeutic and supplementary supplies for malnutrition treatment and prevention, and lack of funding mechanism for nutrition sector across the country.

### Response

Partners scaled-up community outreach activities across South Sudan.

- **Treatment of malnutrition:** 72,818 boys and girls (6-59 months) were admitted for treatment in outpatient therapeutic programs (OTP) sites and stabilizing centers. 70,467 boys and girls (6-59 months) and 30,043 pregnant and lactating women (PLW) were admitted for treatment of moderate acute malnutrition in targeted supplementary feeding programs (TSFP).
- **Prevention of malnutrition:** 124,781 boys and girls (6-59 months) and 28,948 PLWs were admitted to blanket supplementary feeding programs (BSFP). Some 176,932 caregivers were targeted with infant and young child feeding (IYCF) messages.
- **Rapid/emergency response:** The rapid response mission to Mading county in Luakping, Nasir County, Upper Nile State was completed. 1,101 boys and girls (6-59 months) were screened by MUAC and supplemented by Vitamin A. 684 boys and girls 12-59 months received deworming medication. 440 PLW were screened with MUAC and reached with IYCF messages.
- **The Food Security and Nutrition Monitoring System (FSNMS) assessment** that was expanded to include nutrition data, commenced its third round in all states except Unity, which was inaccessible due to insecurity.

## Gaps and constraints

- **Funding gaps:** Urgent funds are needed to scale-up activities (pre-positioning of pipeline supplies and scaling up of front line services) for moderate and severe acute malnutrition treatment and prevention across the country.
- **Secured access and freedom of movement** is required for continued routine and emergency service provision, especially in Unity and Upper Nile states that are insecure. The escalation of ethnic conflicts in Malakal, affects the freedom of movement of certain groups to access markets and nutrition services; thus posing a threat to deterioration in the nutrition situation.
- **Logistical constraints:** Shortage in therapeutic and supplementary supplies in some counties was due to logistical constraints (road access/flooding and insecurity).
- **Nutrition expertise:** The nutrition sector requires additional qualified nutrition expertise among implementing partners, particularly in emergency/rapid response and the cluster coordination team, to better coordinate and implement quality life-saving nutrition programs in emergency context.

## Protection

### Needs

- Insecurity, including in PoC sites, continued to adversely affect operations and hampered protection response in some areas. Partners observed the need to strengthen the networks for monitoring and reporting on grave violations to children. Registration and verification of the displaced people remained critical in light of renewed conflicts and congestions in sites. An increased number of displaced people present with psychosocial problems as a result of the continued impact of war and displacement.

### Response

- Some 201,941 children under 18 years of age and 107,992 adults have been reached through child protection interventions, while 4,018 people (2133 women, 583 men, 963 girls and 339 boys) were reached through GBV interventions. 18 per cent of the people reached through child protection in emergency (CPIE) programmes are in PoC sites; six per cent in refugee camps, while the remaining 76 per cent are spontaneously settled or with host communities outside of PoCs.
- Since March 2014, some 7,018 children and 6,193 adults have been reached during rapid response missions.
- Protection monitoring of returnees at the dock in Bor town, Jonglei State continues by using the revised monitoring tool. Protection partner interviewed a total of 135 individuals (23 households) during the week, consisting of 103 internally displaced returnees and 32 refugee returnees mainly from Mingkaman, islands on the River Nile, Uganda and Nimule. Their main reasons for return to Bor are reportedly safety and food distribution in town. None of the interviewed refugee returnees reported problems crossing the border but there were previous reports of confiscation of refugee documents by the authorities at the border. Protection actors continued to monitor the situation of these groups and ensured coordinated response.
- A total of 421 individuals received their nationality certificates (national identity cards) from the authorities in Raja County. Partners will follow up the case of 79 people who wait processing for their identity cards in Wau and Juba.

## Gaps and constraints

- In Juba PoCs, women survivors declined to be referred to the police as they are afraid of being ostracized by the family for reporting abusive spouses. Under-reporting of GBV incidents remains a challenge.
- Partners led the participatory assessment exercise in the Wau PoC, Western Bahr-el-Ghazal State, aimed at better understanding the protection issues of the displaced and offer transitional solutions. The total population in the site currently stands at 447 individuals; with occupants reportedly still traumatized and afraid of leaving the site. The team's recommendations included a further in-depth assessment, enhanced engagement with the community and increased humanitarian assistance.
- Partners participated in the rapid assessment of some 107 Mabanese displaced in Detang, Upper Nile State. The team found out that they are civilians who had moved from Kanala to Detang and are in need of emergency shelter, food assistance and some need transport back to Maban.
- In Bentiu, forced marriage increased in the month of November and partners have found it difficult to engage community leadership as they were reportedly involved in the practise.

## Shelter and Non-Food Items

### Needs

- Partners have reported an increasing need for emergency shelter, especially in areas affected by floods and displacements due to insecurity. Partners identified some 1.1 million people to be in need of assistance countrywide, by December 2014.

### Response

- Coverage:** Of the estimated 450,000 people targeted for shelter, 65 per cent (290,450 individuals) have received shelter; while 89 per cent (887,635 people) of the one million people targeted for NFIs have been reached.
- Distributions:** NFI distributions were completed in Gorwai (Jonglei) to 2,970 households. Partners continued distributions in Kuerenge, Jikmir, and Mandeng (Upper Nile State). Shelter items for 8,000 households were delivered to the Bentiu POC (Unity); Movement of NFIs for 1,438 households continued from Rumbek to Koch (Unity).
- Verifications and needs assessments:** Verification continued for 1,500 households in Lankien (Jonglei); while assessment were completed for Pagil and Haat in Jonglei State. A team in Renk, Upper Nile State, verified assessments conducted by locals actors.

### Gaps and constraints

- Insecurity:** NFI distributions in Kamel, Jonglei State, and Baliet, Upper Nile State, were put on hold due to insecurity and lack of access.
- Logistical constraints,** including poor road conditions slowed down the movement of items for NFI response to 3,341 households in Walgak; 2,515 in Akobo town; 2,000 households in Waat, all in Jonglei State. NFI response to 882 households in Abeimnom, Unity State, was still on hold due to difficult road conditions preventing stock movement from warehouses in Wau, Western Bahr el Ghazal State.
- In Yuai (Jonglei), NFI distribution planned for 5,000 households was delayed this week **due to a fatal plane crash** that carried the stock to the field, where items were lost and looted, and replacement flights were delayed due to safety.

## Water, Sanitation and Hygiene

### Needs

- Insufficient latrines and sanitation services continued to pose a serious health risk across displacement sites in South Sudan. Overcrowding in the sites put people at risk of communicable diseases and infections. Meeting the SPHERE standards, preventing and containing outbreaks of waterborne diseases, including current cholera outbreak remained a priority countrywide.

### Response

- Coverage:** Partners have reached 93 per cent (over 3.5 million people) of the 3.8 million people targeted. Partners maintained emergency WASH services in PoC sites and displacement settlements. Since the start of the current crisis, over 55 WASH cluster partners have reached over 3.5 million conflict-affected people in over 60 sites, with life-saving emergency WASH assistance. At least half of the people reached are displaced people.
- Performance against standards:** Global emergency standards for water supply (15 litres per day per person) were achieved in 32 sites; while sanitation coverage (at least 1 latrine per 50 people) has been achieved in 21 sites.
- Cholera response:** WASH partners continued response efforts in Eastern Equatoria and Central Equatoria states, focusing on preparedness and prevention activities.
- Scaling up Hepatitis E response:** Partners continued with hygiene promotion campaigns, house-to-house hygiene promotion and soap distribution across Mingkaman, Lakes State, and Bentiu, Unity State.
- Bentiu response:** Hand-washing stations were scaled-up across all PoC sites. Total of 11,600 households received soap during the general food distribution. Bentiu POC hand washing day was celebrated on 15 November in all sites within the Bentiu POC.
- Water supply in the Bentiu PoC** was 12.5 litres per person per day with five operational boreholes. Sanitation coverage was 601 latrines, with 1 latrine per 68 people; 210 more latrines were needed to reach SPHERE standards of 1 latrine per 50 people.



- Dry space for latrine construction was identified in PoC 2, one of the sites that was most affected by the flooding. Latrine construction materials have been prioritized by the logistics cluster for transport to Bentiu to support the scale-up efforts of partners. Partners continue to distribute “pee-poo” bags (self-sanitizing single-use biodegradable toilet) as an interim sanitation measure to those in the most flood-affected parts of PoC 2 and 3.
- **Rapid response teams:** The cluster has six mobile partners, with multiple teams responding across the country.

### Gaps and constraints

- **Negotiating access:** Guaranteed access into current locations and new locations—particularly around Bentiu—is vital for continued emergency service provision. Continued engagement with the Access Working Group is needed to ensure humanitarian response in deep-field locations.
- **WASH expertise needed:** The cluster requires additional qualified WASH personnel (within agencies and the cluster coordination team) to coordinate and implement quality WASH programs in an insecure crisis context.
- **Funding gaps:** More funding needed to scale-up (pre-positioning of pipeline supplies, especially with the upcoming dry season and increased front line services) activities in order to mitigate against cholera, other potential water borne disease outbreaks and ensure continuation of services in POC sites and settlements in major sites where SPHERE standards are not being met.

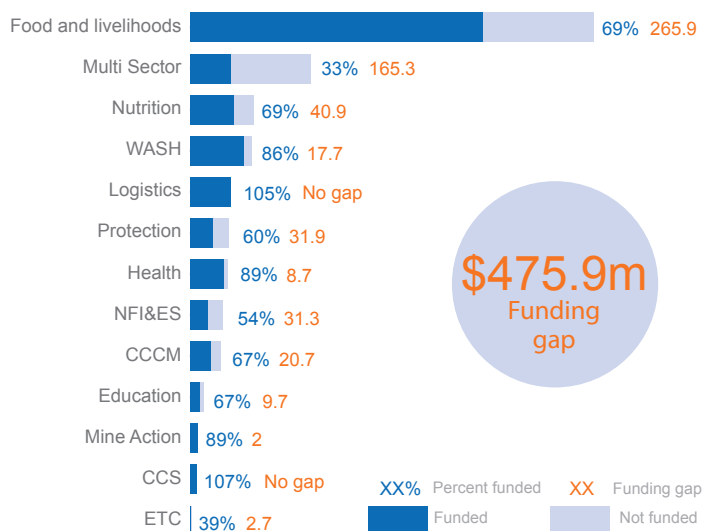
## Humanitarian Financing

### South Sudan Crisis Response Plan (CRP)

The South Sudan Crisis Response Plan (CRP) was 73 per cent funded, with \$1.3 billion received as of 21 November 2014. An estimated \$482 million is still required to reach more people in need by December 2014. More than 300,000 people with acute needs have not received any assistance, while others have only had their needs partially met.

Aid agencies are also appealing for some \$600 million for procurement and pre-positioning of supplies ahead of the rainy season next year. The funding is necessary for conducting essential repairs of key infrastructure including, roads and airstrips and for the timely startup of front line activities at the beginning of 2015.

#### CRP requirements and funding status by clusters (\$ million)



#### For further information or to provide feedback on this product, please contact:

Truphosa Anjichi-Kodumbe, Humanitarian Reporting Officer, [anjichi@un.org](mailto:anjichi@un.org), +211 922 406 014

Websites: [www.unocha.org/south-sudan](http://www.unocha.org/south-sudan) | <http://southsudan.humanitarianresponse.info/>

Facebook UNOCHA South Sudan | Twitter @OCHASouthSudan