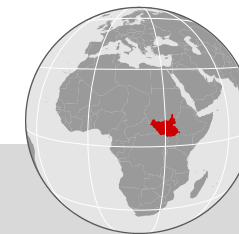


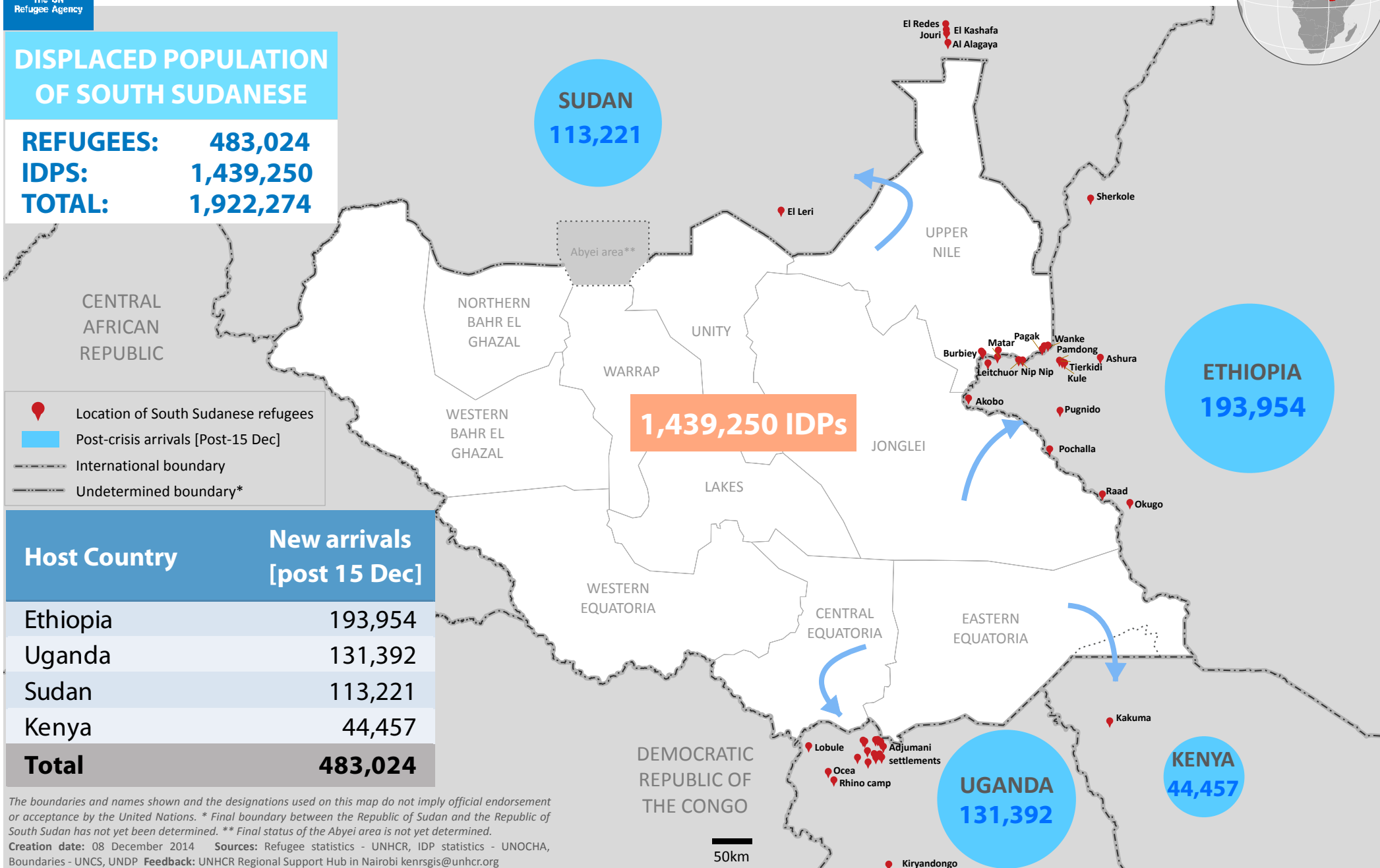
# South Sudan Emergency: Regional overview of refugees from South Sudan

New arrivals since 15 Dec 2013 | as of 04 December 2014



## DISPLACED POPULATION OF SOUTH SUDANESE

**REFUGEES:** 483,024  
**IDPS:** 1,439,250  
**TOTAL:** 1,922,274



Host Country	New arrivals [post 15 Dec]
Ethiopia	193,954
Uganda	131,392
Sudan	113,221
Kenya	44,457
<b>Total</b>	<b>483,024</b>

The boundaries and names shown and the designations used on this map do not imply official endorsement or acceptance by the United Nations. \* Final boundary between the Republic of Sudan and the Republic of South Sudan has not yet been determined. \*\* Final status of the Aboyei area is not yet determined.

Creation date: 08 December 2014 Sources: Refugee statistics - UNHCR, IDP statistics - UNOCHA, Boundaries - UNCS, UNDP Feedback: UNHCR Regional Support Hub in Nairobi kenrsgis@unhcr.org