

Statistical summary

as of
29/02/2016

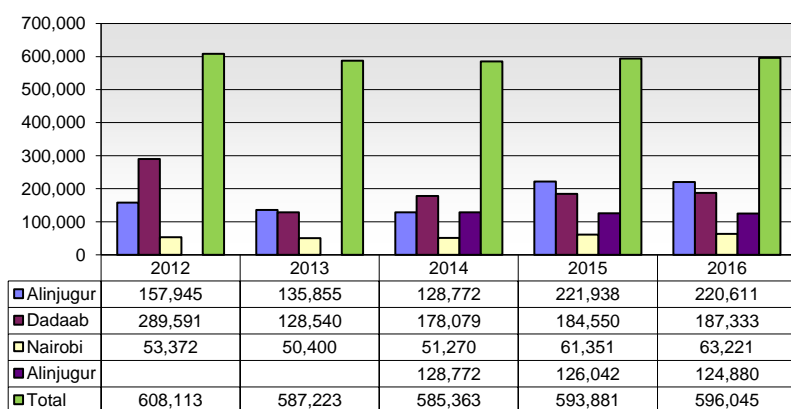
Refugees and Asylum Seekers in Kenya

	Total	Alinjugur	Dadaab	Kakuma	Nairobi	
A. Refugees and Asylum Seekers	596,045	124,880	220,611	187,333	63,221	- Page 2
B. Registration	4,888	57	94	2,768	1,969	- Page 6
C. Refugee Status Determination						- Page 7
1. Applied	3,112	81	196	1,012	1,823	
2. Recognized	787	40	56	496	195	
3. Rejected	3	0	0	0	3	
4. Pending	41,288	883	2,146	22,934	15,325	
D. 2016 Resettlement Submissions	677					- Page 8
E. 2016 Resettlement Departures	650					- Page 9
F. 2016 Voluntary Repatriation	4,319					- Page 10

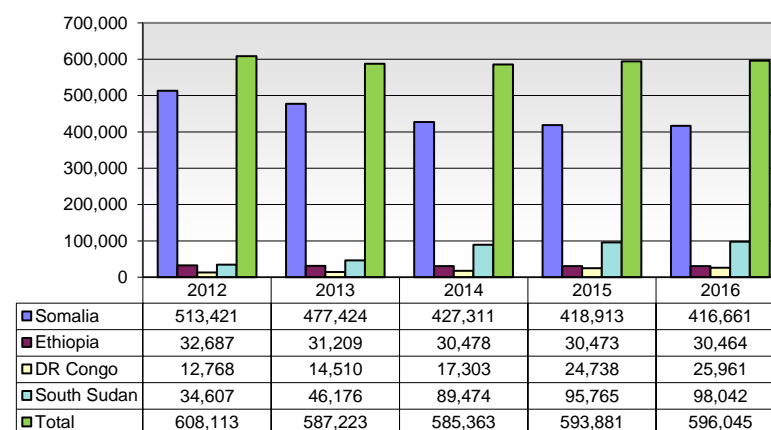
REFUGEES AND ASYLUM SEEKERS IN KENYA BY COUNTRY OF ORIGIN AND LOCATION
FEBRUARY 2016

Country of Origin	2012					2013					2014					2015					2016				
	Alinjugur	Dadaab	Kakuma	Nairobi	Total	Alinjugur	Dadaab	Kakuma	Nairobi	Total	Alinjugur	Dadaab	Kakuma	Nairobi	Total	Alinjugur	Dadaab	Kakuma	Nairobi	Total	Alinjugur	Dadaab	Kakuma	Nairobi	Total
Somalia	154,104	275,258	50,366	33,693	513,421	132,611	258,596	53,816	32,401	477,424	125,584	213,466	56,180	32,081	427,311	122,663	208,741	54,886	32,623	418,913	121,489	207,469	54,899	32,804	416,661
Ethiopia	3,835	13,325	6,374	9,153	32,687	3,236	12,746	7,272	7,955	31,209	3,176	11,889	7,772	7,641	30,478	3,094	11,399	7,595	8,385	30,473	3,096	11,343	7,525	8,500	30,464
Sudan		14	5,345	388	5,747		21	7,666	275	7,962		69	9,366	196	9,631	-	74	10,023	169	10,266	1	74	10,454	172	10,701
DR Congo		101	6,149	6,518	12,768	2	129	7,809	6,570	14,510	5	220	8,966	8,112	17,303	154	187	9,861	14,536	24,738	158	188	9,771	15,844	25,961
Rwanda		16	510	1,024	1,550		18	554	858	1,430		17	616	810	1,443	14	20	615	960	1,609	12	21	634	973	1,640
Eritrea		44	112	1,724	1,880		31	115	1,602	1,748		23	129	1,414	1,566	-	18	126	1,481	1,625		21	125	1,489	1,635
Burundi		70	3,699	502	4,271		18	5,024	411	5,453	1	155	5,985	427	6,568	70	138	6,804	1,300	8,312	73	136	6,974	1,515	8,698
South Sudan	2	680	33,867	58	34,607	1	803	45,309	63	46,176	1	1,334	87,957	182	89,474	32	1,277	93,413	1,043	95,765	33	1,277	95,641	1,091	98,042
Uganda	4	75	736	196	1,011	3	56	914	148	1,121	3	57	1,038	301	1,399	12	67	1,158	670	1,907	12	67	1,242	643	1,964
Other		8	47	116	171	2	10	61	117	190	2	12	70	106	190	3	17	69	184	273	6	15	68	190	279
Total	157,945	289,591	107,205	53,372	608,113	135,855	272,428	128,540	50,400	587,223	128,772	227,242	178,079	51,270	585,363	126,042	221,938	184,550	61,351	593,881	124,880	220,611	187,333	63,221	596,045

TREND BY LOCATION

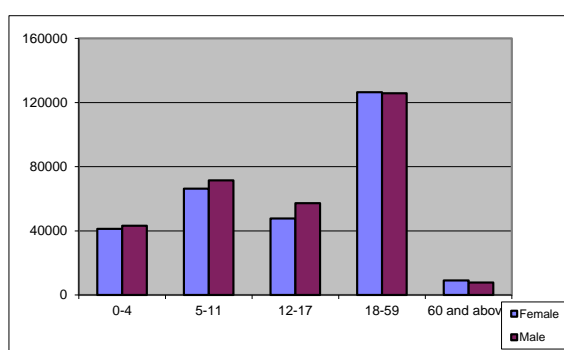


TREND BY MAJOR COUNTRIES OF ORIGIN

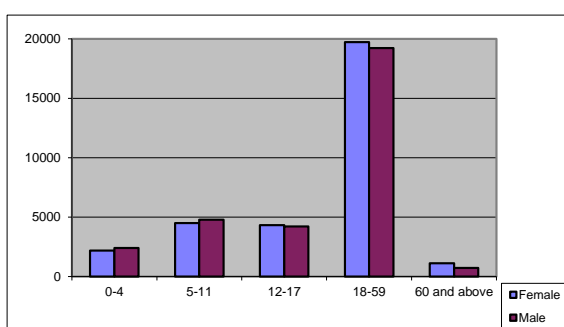


REFUGEES AND ASYLUM SEEKERS IN KENYA : DEMOGRAPHIC BREAKDOWN FEBRUARY 2016

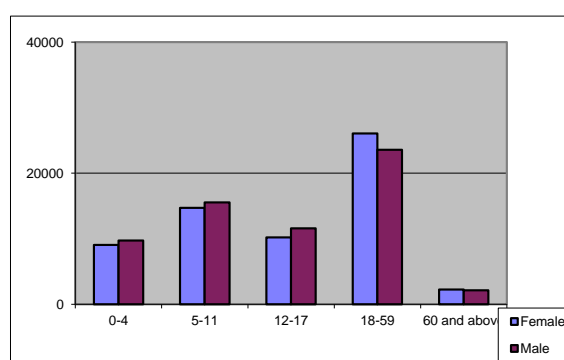
Total Kenya	Age Group	Sex				Total	
		Female		Male			
		#	%	#	%	#	%
	0-4	41,176	6.9%	43,206	7.2%	84,382	<div><div></div></div> 14.2%
	5-11	66,250	11.1%	71,454	12.0%	137,704	<div><div></div></div> 23.1%
	12-17	47,718	8.0%	57,207	9.6%	104,925	<div><div></div></div> 17.6%
	18-59	126,451	21.2%	125,843	21.1%	252,294	<div><div></div></div> 42.3%
	60 and above	9,057	1.5%	7,683	1.3%	16,740	<div><div></div></div> 2.8%
	Total	290,652	48.8%	305,393	51.2%	596,045	



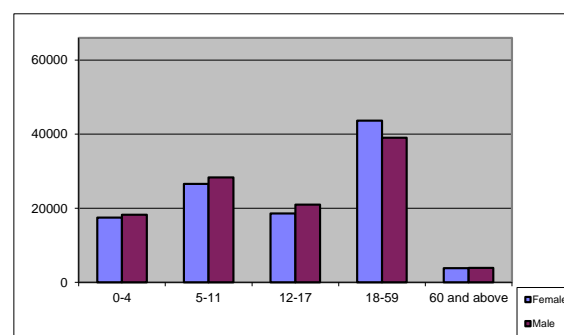
Nairobi	Age Group	Sex				Total	
		Female		Male			
		#	%	#	%	#	%
	0-4	2,180	3.4%	2,398	3.8%	4,578	<div><div></div></div> 7.2%
	5-11	4,509	7.1%	4,786	7.6%	9,295	<div><div></div></div> 14.7%
	12-17	4,329	6.8%	4,213	6.7%	8,542	<div><div></div></div> 13.5%
	18-59	19,726	31.2%	19,234	30.4%	38,960	<div><div></div></div> 61.6%
	60 and above	1,118	1.8%	728	1.2%	1,846	<div><div></div></div> 2.9%
	Total	31,862	50.4%	31,359	49.6%	63,221	



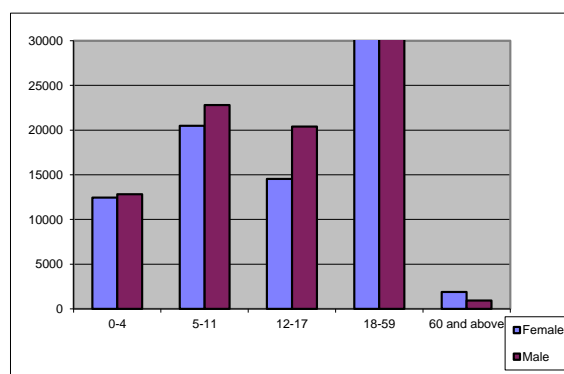
Alinjurgur	Age Group	Sex				Total	
		Female		Male			
		#	%	#	%	#	%
	0-4	9,052	7.2%	9,735	7.8%	18,787	<div><div></div></div> 15.0%
	5-11	14,711	11.8%	15,562	12.5%	30,273	<div><div></div></div> 24.2%
	12-17	10,224	8.2%	11,578	9.3%	21,802	<div><div></div></div> 17.5%
	18-59	26,069	20.9%	23,569	18.9%	49,638	<div><div></div></div> 39.7%
	60 and above	2,247	1.8%	2,133	1.7%	4,380	<div><div></div></div> 3.5%
	Total	62,303	49.9%	62,577	50.1%	124,880	



Dadaab	Age Group	Sex				Total	
		Female		Male			
		#	%	#	%	#	%
	0-4	17,485	7.9%	18,251	8.3%	35,736	<div><div></div></div> 16.2%
	5-11	26,557	12.0%	28,298	12.8%	54,855	<div><div></div></div> 24.9%
	12-17	18,621	8.4%	21,007	9.5%	39,628	<div><div></div></div> 18.0%
	18-59	43,631	19.8%	39,060	17.7%	82,691	<div><div></div></div> 37.5%
	60 and above	3,812	1.7%	3,889	1.8%	7,701	<div><div></div></div> 3.5%
	Total	110,106	49.9%	110,505	50.1%	220,611	



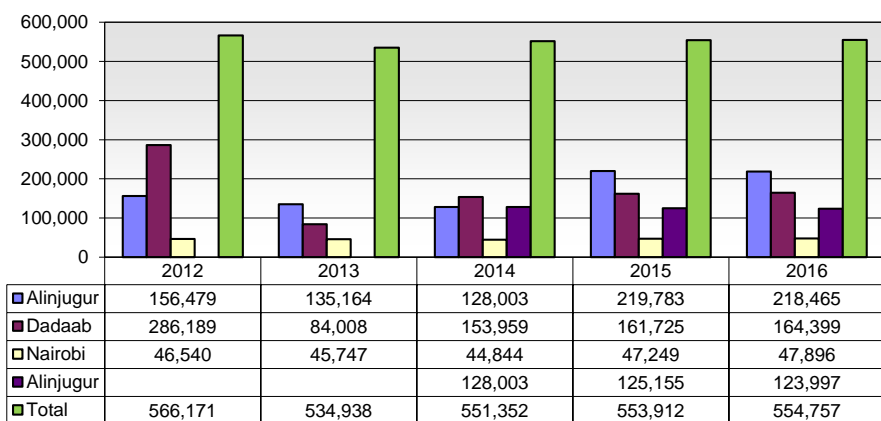
Kakuma	Age Group	Sex				Total	
		Female		Male			
		#	%	#	%	#	%
	0-4	12,459	6.7%	12,822	6.8%	25,281	<div><div></div></div> 13.5%
	5-11	20,473	10.9%	22,808	12.2%	43,281	<div><div></div></div> 23.1%
	12-17	14,544	7.8%	20,409	10.9%	34,953	<div><div></div></div> 18.7%
	18-59	37,025	19.8%	43,980	23.5%	81,005	<div><div></div></div> 43.2%
	60 and above	1,880	1.0%	933	0.5%	2,813	<div><div></div></div> 1.5%
	Total	86,381	46.1%	100,952	53.9%	187,333	



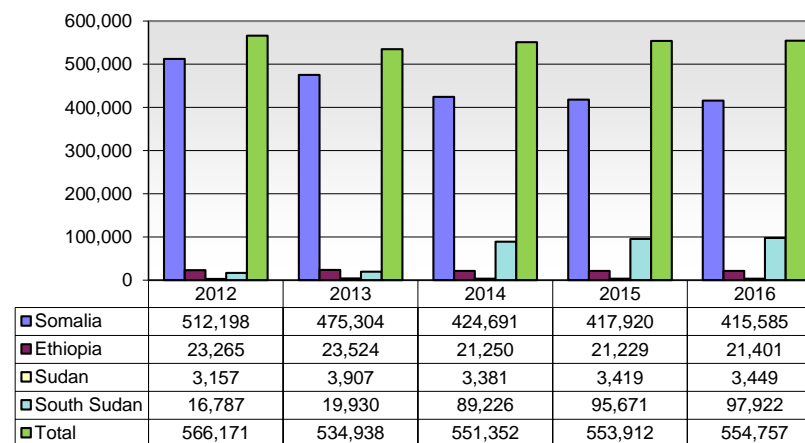
**REFUGEES IN KENYA BY COUNTRY OF ORIGIN AND LOCATION
FEBRUARY 2016**

Country of Origin	2012					2013					2014					2015					2016				
	Alinjugur	Dadaab	Kakuma	Nairobi	Total	Alinjugur	Dadaab	Kakuma	Nairobi	Total	Alinjugur	Dadaab	Kakuma	Nairobi	Total	Alinjugur	Dadaab	Kakuma	Nairobi	Total	Alinjugur	Dadaab	Kakuma	Nairobi	Total
Somalia	153,703	274,935	50,314	33,246	512,198	132,441	258,485	52,131	32,247	475,304	125,429	213,367	54,746	31,149	424,691	122,499	208,652	54,825	31,944	417,920	121,297	207,338	54,837	32,113	415,585
Ethiopia	2,770	10,434	4,169	5,892	23,265	2,715	10,623	4,401	5,785	23,524	2,566	9,627	3,412	5,645	21,250	2,580	9,499	3,448	5,702	21,229	2,593	9,483	3,457	5,868	21,401
Sudan	0	14	2,869	274	3,157	0	21	3,651	235	3,907	0	63	3,141	177	3,381	0	65	3,217	137	3,419	1	65	3,244	139	3,449
DR Congo	0	100	1,870	4,274	6,244	2	129	2,824	5,121	8,076	2	146	3,669	5,507	9,324	32	170	5,559	6,285	12,046	56	162	5,895	6,526	12,639
Rwanda	0	16	344	988	1,348	0	14	360	557	931	0	11	273	541	825	0	9	271	533	813	0	9	273	530	812
Eritrea	0	44	68	1,324	1,436	0	29	61	1,342	1,432	0	20	61	1,252	1,333	0	15	69	1,145	1,229	0	15	68	1,163	1,246
Burundi	0	42	644	357	1,043	0	15	868	284	1,167	0	15	351	291	657	7	41	481	319	848	8	62	546	334	950
South Sudan	2	527	16,225	33	16,787	1	647	19,235	47	19,930	1	1,243	87,886	96	89,226	32	1,271	93,410	958	95,671	33	1,272	95,629	988	97,922
Uganda	4	69	453	84	610	3	53	468	78	602	3	50	402	136	591	3	58	414	162	637	3	58	419	177	657
Other	0	8	7	68	83	2	3	9	51	65	2	4	18	50	74	2	3	31	64	100	6	1	31	58	96
Total	156,479	286,189	76,963	46,540	566,171	135,164	270,019	84,008	45,747	534,938	128,003	224,546	153,959	44,844	551,352	125,155	219,783	161,725	47,249	553,912	123,997	218,465	164,399	47,896	554,757

TREND BY LOCATION



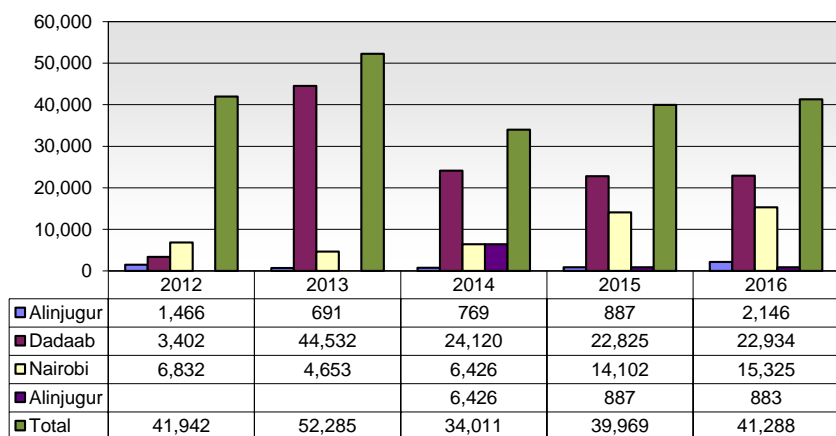
TREND BY MAJOR COUNTRIES OF ORIGIN



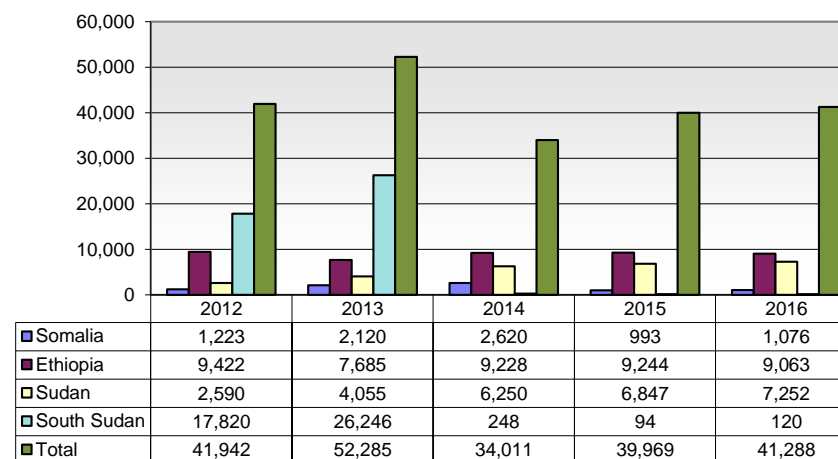
**ASYLUM SEEKERS STATISTICS BY COUNTRY OF ORIGIN AND LOCATION
FEBRUARY 2016**

Country of Origin	2012					2013					2014					2015					2016				
	Alinjugur	Dadaab	Kakuma	Nairobi	Total	Alinjugur	Dadaab	Kakuma	Nairobi	Total	Alinjugur	Dadaab	Kakuma	Nairobi	Total	Alinjugur	Dadaab	Kakuma	Nairobi	Total	Alinjugur	Dadaab	Kakuma	Nairobi	Total
Somalia	401	323	52	447	1,223	170	111	1,685	154	2,120	155	99	1,434	932	2,620	164	89	61	679	993	192	131	62	691	1,076
Ethiopia	1,065	2,891	2,205	3,261	9,422	521	2,123	2,871	2,170	7,685	610	2,262	4,360	1,996	9,228	514	1,900	4,147	2,683	9,244	503	1,860	4,068	2,632	9,063
Sudan			2,476	114	2,590			4,015	40	4,055	0	6	6,225	19	6,250	0	9	6,806	32	6,847		9	7,210	33	7,252
DR Congo	-	1	4,279	2,244	6,524			4,985	1,449	6,434	3	74	5,297	2,605	7,979	122	17	4,302	8,251	12,692	102	26	3,876	9,318	13,322
Rwanda			166	36	202		4	194	301	499	0	6	343	269	618	14	11	344	427	796	12	12	361	443	828
Eritrea			44	400	444		2	54	260	316	0	3	68	162	233	0	3	57	336	396		6	57	326	389
Burundi	-	28	3,055	145	3,228		3	4,156	127	4,286	1	140	5,634	136	5,911	63	97	6,323	981	7,464	65	74	6,428	1181	7,748
South Sudan	-	153	17,642	25	17,820		156	26,074	16	26,246	0	91	71	86	248	0	6	3	85	94		5	12	103	120
Uganda	-	6	283	112	401		3	446	70	519	0	7	636	165	808	9	9	744	508	1,270	9	9	823	466	1,307
Other			40	48	88		7	52	66	125	0	8	52	56	116	1	14	38	120	173		14	37	132	183
Total	1,466	3,402	30,242	6,832	41,942	691	2,409	44,532	4,653	52,285	769	2,696	24,120	6,426	34,011	887	2,155	22,825	14,102	39,969	883	2,146	22,934	15,325	41,288

TREND BY LOCATION



TREND BY MAJOR COUNTRIES OF ORIGIN



**KENYA REGISTRATION TREND BY LOCATION AND COUNTRY OF ORIGIN
FEBRUARY 2016**

Total Kenya	Month	Total	BDI	BKF	CAR	CHD	CMR	COB	COD	DJB	ERT	ETH	ICO	IRN	IRQ	LBR	NIG	OMN	PAK	PAL	RWA	SAU	SOM	SSD	SUD	SYR	TAN	TIB	UGA	YEM
	Jan	1,962	178	0	0	0	0	2	563	0	11	82	1	0	0	2	1	0	0	0	10	0	108	730	247	0	0	3	24	0
	Feb	2,926	166	0	0	0	0	0	902	0	10	108	0	0	0	1	0	0	0	0	32	0	254	1,264	143	0	0	0	40	
	Mar	0																												
	Apr	0																												
	May	0																												
	Jun	0																												
	Jul	0																												
	Aug	0																												
	Sep	0																												
	Oct	0																												
	Nov	0																												
	Dec	0																												
Total	4,888	344	0	0	0	0	2	1,465	0	21	190	1	0	0	3	1	0	0	0	42	0	362	1,994	390	0	0	3	64	6	

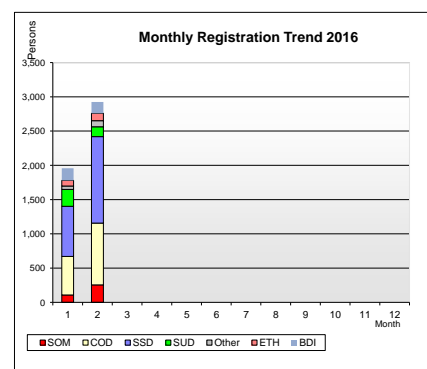
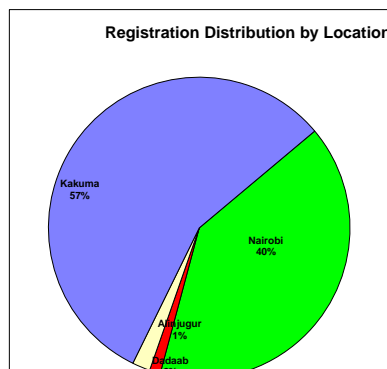
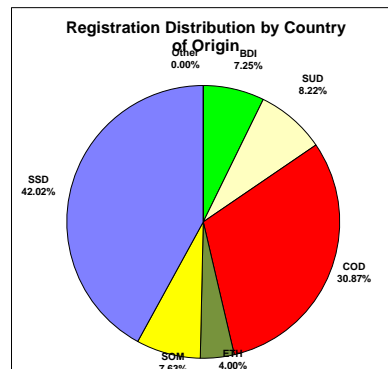
Nairobi	Month	Total	BDI	BKF	CAR	CHD	CMR	COB	COD	DJB	ERT	ETH	ICO	IRN	IRQ	LBR	NIG	OMN	PAK	PAL	RWA	SAU	SOM	SSD	SUD	SYR	TAN	TIB	UGA	YEM
	Jan	766	90						512		10	66	1			2					7		64	5	3			3	3	
	Feb	1,203	99						816		7	85				1					17		125	43	1			3	6	
	Mar	0																												
	Apr	0																												
	May	0																												
	Jun	0																												
	Jul	0																												
	Aug	0																												
	Sep	0																												
	Oct	0																												
	Nov	0																												
	Dec	0																												
Total	1,969	189	0	0	0	0	0	1,328	0	17	151	1	0	0	3	0	0	0	0	24	0	189	48	4	0	0	3	6	6	

Atin Jugur	Month	Total	BDI	BKF	CAR	CHD	CMR	COB	COD	DJB	ERT	ETH	ICO	IRN	IRQ	LBR	NIG	OMN	PAK	PAL	RWA	SAU	SOM	SSD	SUD	SYR	TAN	TIB	UGA	YEM
	Jan	15	3									1											11							
	Feb	42	3						2														37							
	Mar	0																												
	Apr	0																												
	May	0																												
	Jun	0																												
	Jul	0																												
	Aug	0																												
	Sep	0																												
	Oct	0																												
	Nov	0																												
	Dec	0																												
Total	57	6	0	0	0	0	0	0	2	0	0	1	0	0	0	0	0	0	0	0	0	0	48	0	0	0	0	0	0	

Dadabab

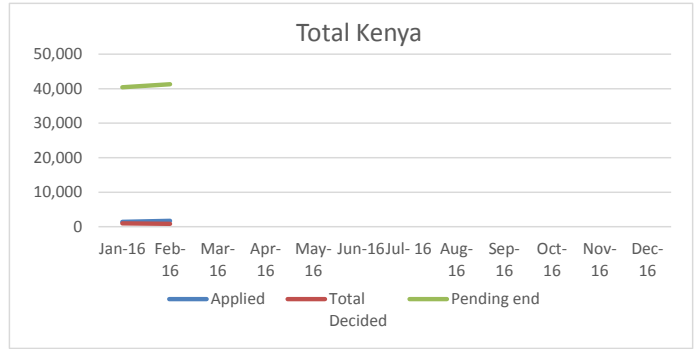
Month	Total	BDI	BKF	CAR	CHD	CMR	COB	COD	DJB	ERT	ETH	ICO	IRN	IRQ	LBR	NIG	OMN	PAK	PAL	RWA	SAU	SOM	SSD	SUD	SYR	TAN	TIB	UGA	YEM
Jan	20	1					2				2											10	4	1					
Feb	74							2		3	5											53	11						
Mar	0																												
Apr	0																												
May	0																												
Jun	0																												
Jul	0																												
Aug	0																												
Sep	0																												
Oct	0																												
Nov	0																												
Dec	0																												
Total	94	1	0	0	0	0	2	2	0	3	7	0	0	0	0	0	0	0	0	0	0	63	15	1	0	0	0	0	0

Kakuma	Month	Total	BDI	BKF	CAR	CHD	CMR	COB	COD	DJB	ERT	ETH	ICO	IRN	IRQ	LBR	NIG	OMN	PAK	PAL	RWA	SAU	SOM	SSD	SUD	SYR	TAN	TIB	UGA	YEM
	Jan	1,161	84						51		1	13					1				3		23	721	243				21	
	Feb	1,607	64						82			18									15		39	1,210	142				37	
	Mar	0																												
	Apr	0																												
	May	0																												
	Jun	0																												
	Jul	0																												
	Aug	0																												
	Sep	0																												
	Oct	0																												
	Nov	0																												
	Dec	0																												
Total	2,768	148	0	0	0	0	0	133	0	1	31	0	0	0	0	1	0	0	0	0	18	0	62	1,931	385	0	0	0	58	0

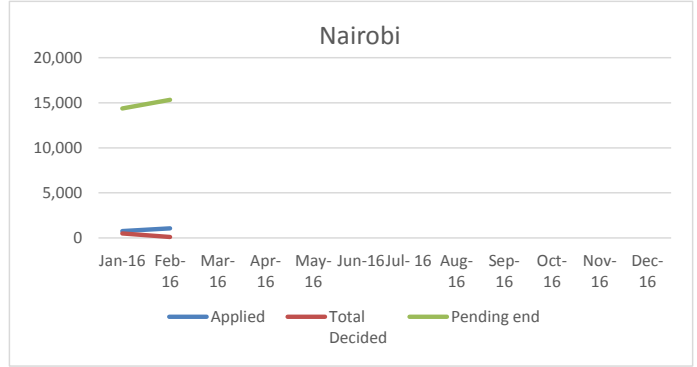


Individual Asylum Applications and Refugee Status Determination Trend - FEBRUARY 2016

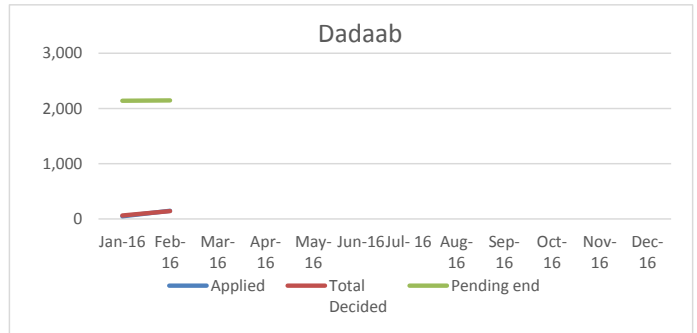
Total	Month	Pending begin	Applied	Reco-gnized	Reje-cted	Oth. Closed	Total Decided	Pending end
	Jan-16	39,969	1,407	355	3	609	967	40,409
	Feb-16	40,409	1,705	432	0	394	826	41,288
	Mar-16							
	Apr-16							
	May-16							
	Jun-16							
	Jul-16							
	Aug-16							
	Sep-16							
	Oct-16							
	Nov-16							
	Dec-16							
	Total		3,112	787	3	1,003	1,793	



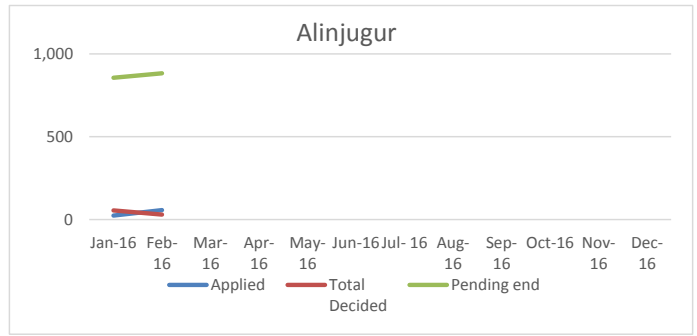
Nairobi	Month	Pending begin	Applied	Reco-gnized	Reje-cted	Oth. Closed	Total Decided	Pending end
	Jan-16	14,102	761	3	3	490	496	14,367
	Feb-16	14,367	1,062	192		-88	104	15,325
	Mar-16							
	Apr-16							
	May-16							
	Jun-16							
	Jul-16							
	Aug-16							
	Sep-16							
	Oct-16							
	Nov-16							
	Dec-16							
	Total		1,823	195	3	402	600	



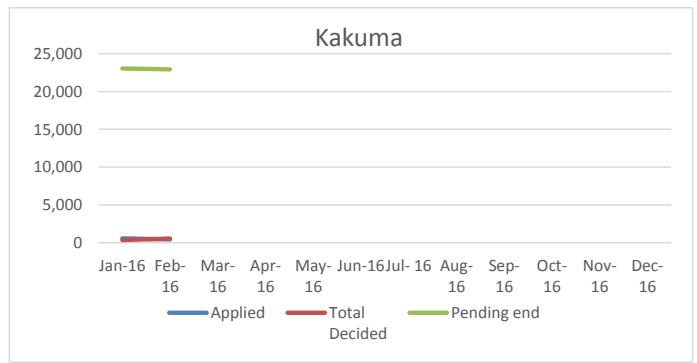
Dadaab	Month	Pending begin	Applied	Reco-gnized	Reje-cted	Oth. Closed	Total Decided	Pending end
	Jan-16	2,155	48	26		37	63	2,140
	Feb-16	2,140	148	30		112	142	2,146
	Mar-16							
	Apr-16							
	May-16							
	Jun-16							
	Jul-16							
	Aug-16							
	Sep-16							
	Oct-16							
	Nov-16							
	Dec-16							
	Total		196	56	0	149	205	



Alinjugur	Month	Pending begin	Applied	Reco-gnized	Reje-cted	Oth. Closed	Total Decided	Pending end
	Jan-16	887	24	38		17	55	856
	Feb-16	856	57	2		28	30	883
	Mar-16							
	Apr-16							
	May-16							
	Jun-16							
	Jul-16							
	Aug-16							
	Sep-16							
	Oct-16							
	Nov-16							
	Dec-16							
	Total		81	40	0	45	85	



Kakuma	Month	Pending begin	Applied	Reco-gnized	Reje-cted	Oth. Closed	Total Decided	Pending end
	Jan-16	22,825	574	288		65	353	23,046
	Feb-16	23,046	438	208		342	550	22,934
	Mar-16							
	Apr-16							
	May-16							
	Jun-16							
	Jul-16							
	Aug-16							
	Sep-16							
	Oct-16							
	Nov-16							
	Dec-16							
	Total		1,012	496	0	407	903	



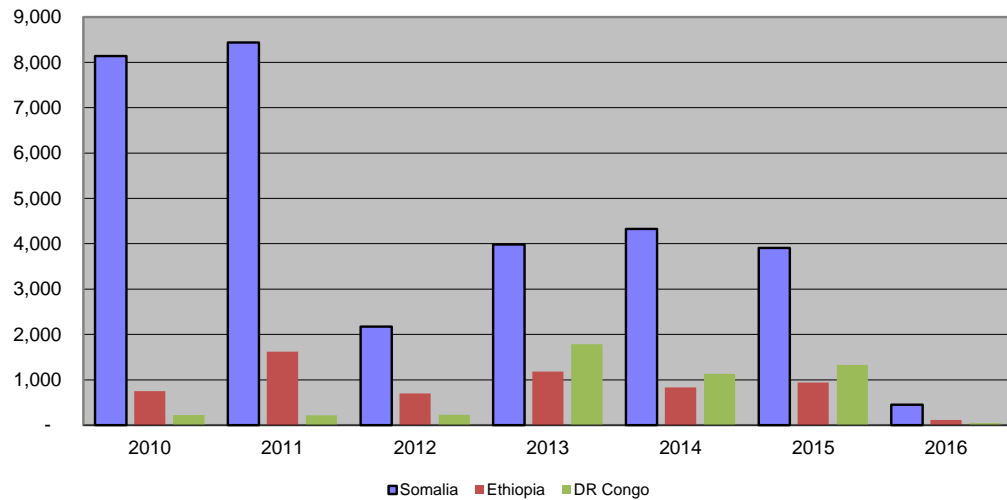
RESETTLEMENT SUBMISSION BY COUNTRY OF ORIGIN

Country of Origin	2010	2011	2012	2013	2014	2015	2016	Total
Somalia	8,143	8,439	2,170	3,985	4,325	3,909	453	31,424
Ethiopia	752	1,617	700	1,181	830	941	112	6,133
Sudan	602	175	30	29	158	541	10	1,545
DR Congo	223	218	230	1,783	1,132	1,326	45	4,957
Eritrea	67	25	20	111	73	116	3	415
Uganda	13	13	5	24	88	108	3	254
Burundi	15	17	22	58	46	121	6	285
Rwanda	45	13	24	22	31	78		213
South Sudan			33	214	111	420	45	823
Other	18	1	5	5	11	26		66
Total	9,878	10,518	3,239	7,412	6,805	7,586	677	46,115

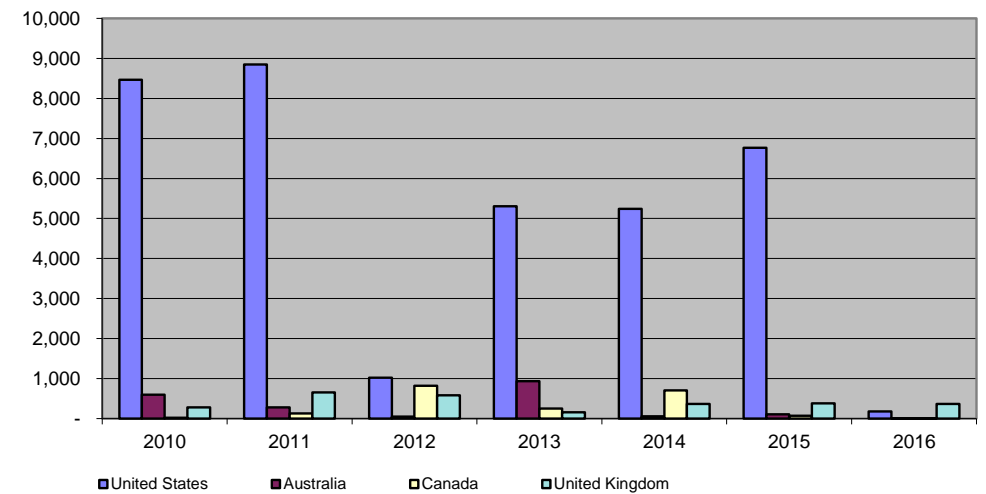
RESETTLEMENT SUBMISSION BY COUNTRY OF RESETTLEMENT

Country of Submission	2010	2011	2012	2013	2014	2015	2016	Total
United States	8,463	8,849	1,019	5,304	5,239	6,764	180	35,818
Australia	595	281	50	932	53	107	6	2,024
Canada	23	129	821	254	705	69	3	2,004
United Kingdom	280	657	585	155	363	378	365	2,783
Sweden	352	391	402	342	397	81	117	2,082
Netherlands	8	109	114	145	16	130		522
Denmark	132	6	14	16	14	29	6	217
Norway	16	72	218	218	12	11		547
France	-	-	-	29				29
Other	9	24	16	17	6	17		89
Total	9,878	10,518	3,239	7,412	6,805	7,586	677	46,115

RESETTLEMENT SUBMISSION TRENDS BY MAJOR COUNTRIES OF ORIGIN



RESETTLEMENT SUBMISSION TRENDS BY MAJOR COUNTRIES OF RESETTLEMENT



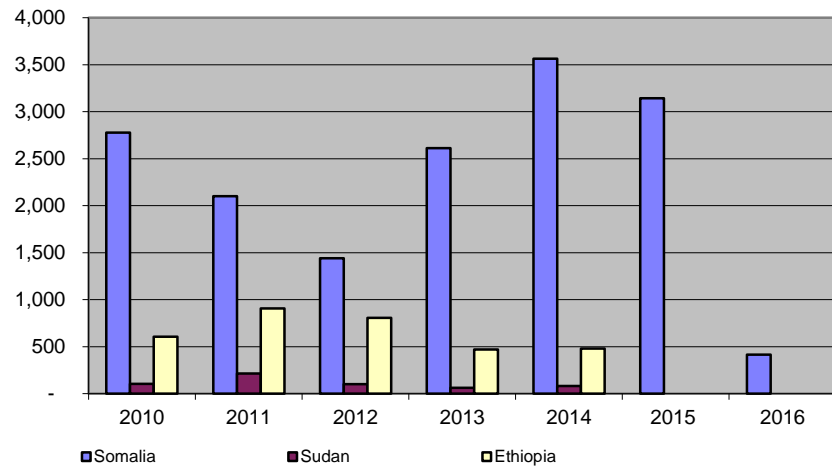
RESETTLEMENT DEPARTURES BY COUNTRY OF ORIGIN

Country of Origin	2010	2011	2012	2013	2014	2015	2016	Total
Somalia	2,776	2,102	1,442	2,612	3,562	3,142	415	16,051
Sudan	103	213	102	61	82	46	1	608
Ethiopia	606	906	806	469	480	645	90	4,002
Rwanda	44	35	26	26	21	28	4	184
Uganda	13	7	14	2	36	69	6	147
Congo DR	179	234	192	308	560	874	99	2,446
Burundi	6	35	14	13	23	30		121
Eritrea	39	48	25	25	57	28	12	234
SSD	-	-	35	88	92	136	15	366
Other	7	1	3	-		3	8	22
Total	3,773	3,581	2,659	3,604	4,913	5,001	650	24,181

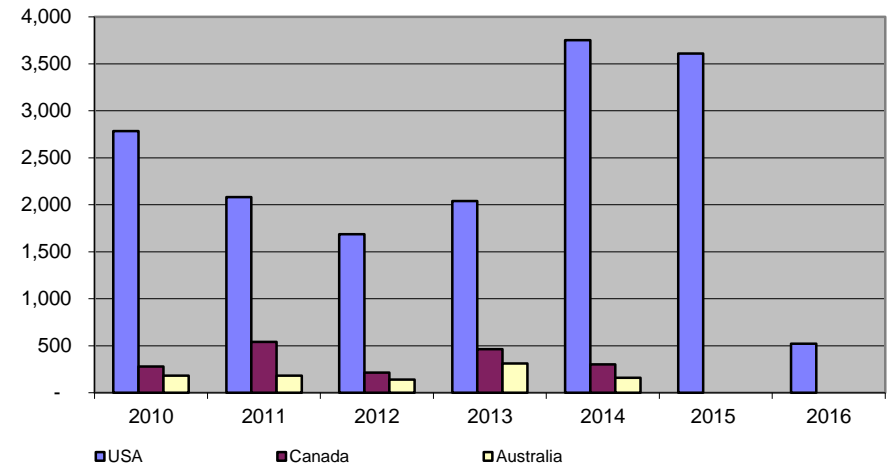
RESETTLEMENT DEPARTURES BY COUNTRY OF RESETTLEMENT

Country of Resettlement	2010	2011	2012	2013	2014	2015	2016	Total
USA	2,783	2,083	1,688	2,040	3,751	3,610	522	16,477
Canada	280	541	213	464	302	174	34	2,008
Australia	183	182	141	311	160	514	23	1,514
Sweden	327	329	88	331	229	341	9	1,654
United Kingdom	199	208	460	260	279	308		1,714
Netherlands	-	81	29	-	87	2	62	261
Norway	-	58	18	159	78	32		345
New Zealand	-	10	-	4				14
Denmark			10	22	7	7		46
Other	1	89	12	13	20	13		148
Total	3,773	3,581	2,659	3,604	4,913	5,001	650	24,181

RESETTLEMENT DEPARTURE TRENDS BY MAJOR COUNTRIES OF ORIGIN



RESETTLEMENT DEPARTURE TRENDS BY MAJOR COUNTRIES OF RESETTLEMENT



**VOLUNTARY REPATRIATION FROM KENYA
BY COUNTRY OF ORIGIN AS OF FEBRUARY 2016**

Country of Origin	Year									
	2008	2009	2010	2011	2012	2013	2014	2015	2016	Total
Sudan	9,876	665	64	28						10,633
Burundi	6	2	1		4					13
Rwanda	-	1	2	2	1					6
Mozambique	-	-	5							5
Somalia	-	-	6	69	4		485	5,616	4,319	10,499
Congo	-	-	3	2	7	3				15
Ethiopia	1	-	-							1
Uganda	1	-	-	4	1					6
Other	-	-	2	6						8
Total	9,884	668	83	111	17	3	485	5,616	4,319	21,186

VolRepTrend

