

Statistical summary

as of
30 September 2011

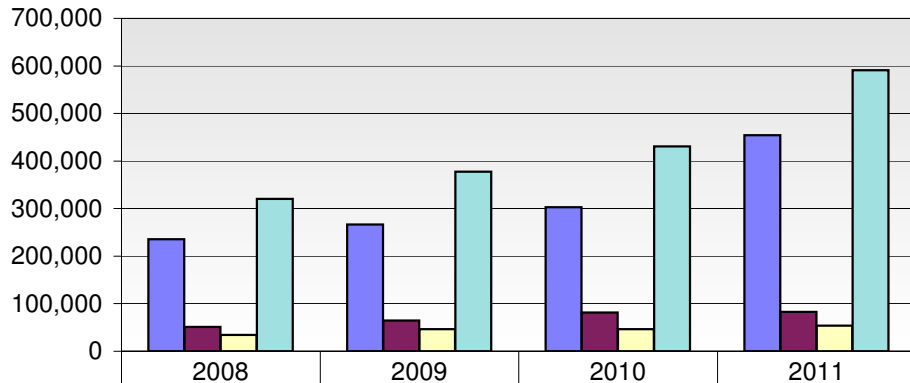
Refugees and Asylum Seekers in Kenya

	Total	Dadaab	Kakuma	Nairobi	
A. Refugees and Asylum Seekers	590,921	454,059	83,063	53,799	- Page 2
B. Registration 2011	163,170	144,036	9,066	10,068	- Page 5
C. Refugee Status Determination 2011					- Page 6
1. Applied	12,391	2,229	6,347	3,815	
2. Recognized	4,672	3,189	709	774	
3. Rejected	1,309	6	363	940	
4. Pending	33,335	9,149	15,798	8,388	
D. Voluntary Repatriation 2011	111				- Page 7
E. Resettlement Submission 2011	8,026				- Page 8
F. Resettlement Departures 2011	1,451				- Page 9
G. Returnees 2010	324				

REFUGEES AND ASYLUM SEEKERS IN KENYA BY COUNTRY OF ORIGIN AND LOCATION
September 2011

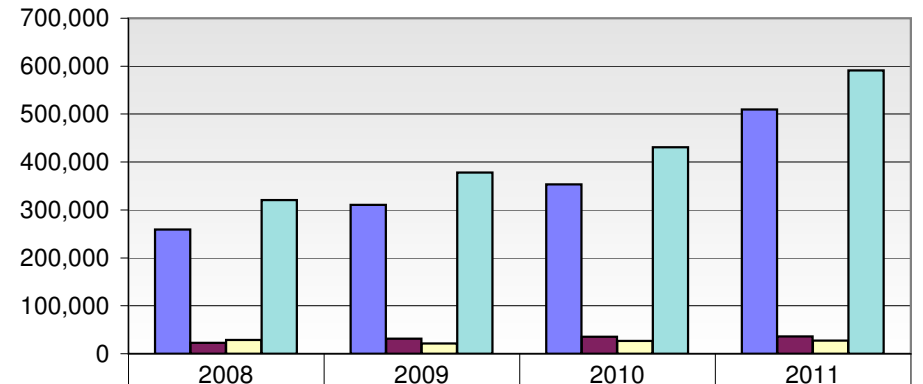
Country of Origin	2008				2009				2010				2011			
	Dadaab	Kakuma	Nairobi	Total	Dadaab	Kakuma	Nairobi	Total	Dadaab	Kakuma	Nairobi	Total	Dadaab	Kakuma	Nairobi	Total
Somalia	226,060	18,537	14,524	259,121	252,214	38,133	20,111	310,458	285,799	43,980	23,429	353,208	434,742	44,250	30,371	509,363
Ethiopia	8,511	4,698	9,440	22,649	13,728	5,613	12,257	31,598	16,155	6,180	12,974	35,309	17,979	5,571	12,338	35,888
Sudan	635	25,723	2,138	28,496	590	18,409	2,224	21,223	796	25,579	623	26,998	996	25,940	610	27,546
DR Congo	51	898	1,978	2,927	63	1,366	4,598	6,027	74	3,582	5,477	9,133	92	4,440	6,351	10,883
Rwanda	26	357	2,141	2,524	19	345	2,266	2,630	20	395	1,531	1,946	19	427	1,508	1,954
Eritrea	77	64	638	779	79	94	1,158	1,331	59	112	1,515	1,686	58	106	1,637	1,801
Burundi	14	224	1,075	1,313	17	373	1,202	1,592	88	803	605	1,496	88	1,738	593	2,419
Uganda	75	401	2,313	2,789	60	448	2,433	2,941	57	507	370	934	65	549	289	903
Other	6	3	2	11	9	9	67	85	9	69	83	161	20	42	102	164
Total	235,455	50,905	34,249	320,609	266,779	64,790	46,316	377,885	303,057	81,207	46,607	430,871	454,059	83,063	53,799	590,921

TREND BY LOCATION



	2008	2009	2010	2011
Dadaab	235,455	266,779	303,057	454,059
Kakuma	50,905	64,790	81,207	83,063
Nairobi	34,249	46,316	46,607	53,799
Total	320,609	377,885	430,871	590,921

TREND BY MAJOR COUNTRIES OF ORIGIN

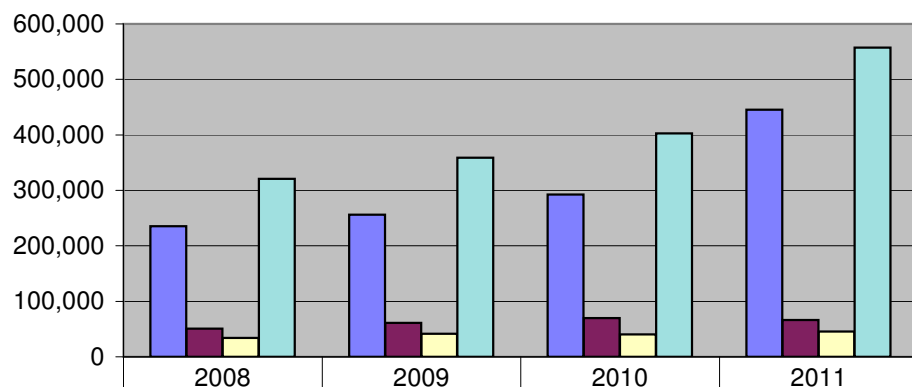


	2008	2009	2010	2011
Somalia	259,121	310,458	353,208	509,363
Ethiopia	22,649	31,598	35,309	35,888
Sudan	28,496	21,223	26,998	27,546
Total	320,609	377,885	430,871	590,921

REFUGEES IN KENYA BY COUNTRY OF ORIGIN AND LOCATION
September 2011

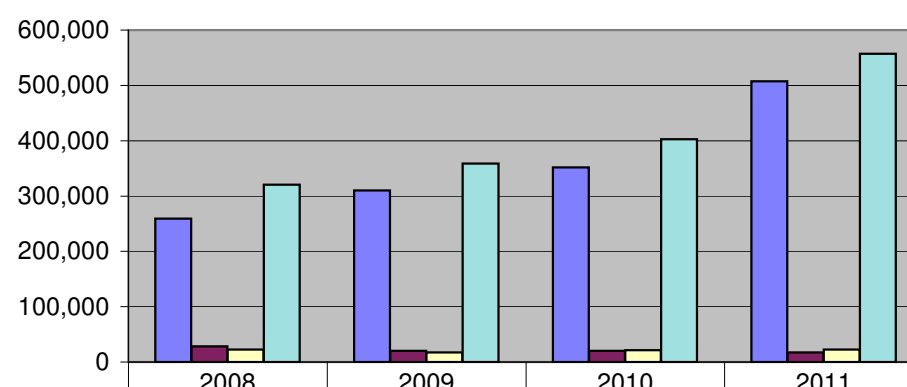
Country of Origin	2008				2009				2010				2011			
	Dadaab	Kakuma	Nairobi	Total	Dadaab	Kakuma	Nairobi	Total	Dadaab	Kakuma	Nairobi	Total	Dadaab	Kakuma	Nairobi	Total
Somalia	226,060	18,537	14,524	259,121	252,202	38,063	20,015	310,280	284,762	43,834	23,177	351,773	433,618	44,103	29,929	507,650
Ethiopia	8,511	4,698	9,440	22,649	3,163	3,965	9,977	17,105	7,201	4,454	9,598	21,253	10,986	3,711	8,105	22,802
Sudan	635	25,723	2,138	28,496	565	17,598	2,152	20,315	436	19,570	522	20,528	451	16,440	489	17,380
Congo	51	898	1,978	2,927	43	732	2,833	3,608	48	881	3,950	4,879	52	1,092	4,012	5,156
Rwanda	26	357	2,141	2,524	19	273	2,176	2,468	17	292	1,356	1,665	12	292	1,275	1,579
Eritrea	77	64	638	779	58	71	898	1,027	53	78	1,094	1,225	56	55	1,126	1,237
Burundi	14	224	1,075	1,313	14	199	1,100	1,313	19	282	464	765	14	371	422	807
Uganda	75	401	2,313	2,789	58	389	2,313	2,760	50	413	274	737	53	432	169	654
Other	6	3	2	11	1	8	44	53	2	18	62	82	11	2	62	75
Total	235,455	50,905	34,249	320,609	256,123	61,298	41,508	358,929	292,588	69,822	40,497	402,907	445,253	66,498	45,589	557,340

REFUGEE TRENDS BY LOCATION



	2008	2009	2010	2011
Dadaab	235,455	256,123	292,588	445,253
Kakuma	50,905	61,298	69,822	66,498
Nairobi	34,249	41,508	40,497	45,589
Total	320,609	358,929	402,907	557,340

REFUGEE TREND BY MAJOR COUNTRIES OF ORIGIN

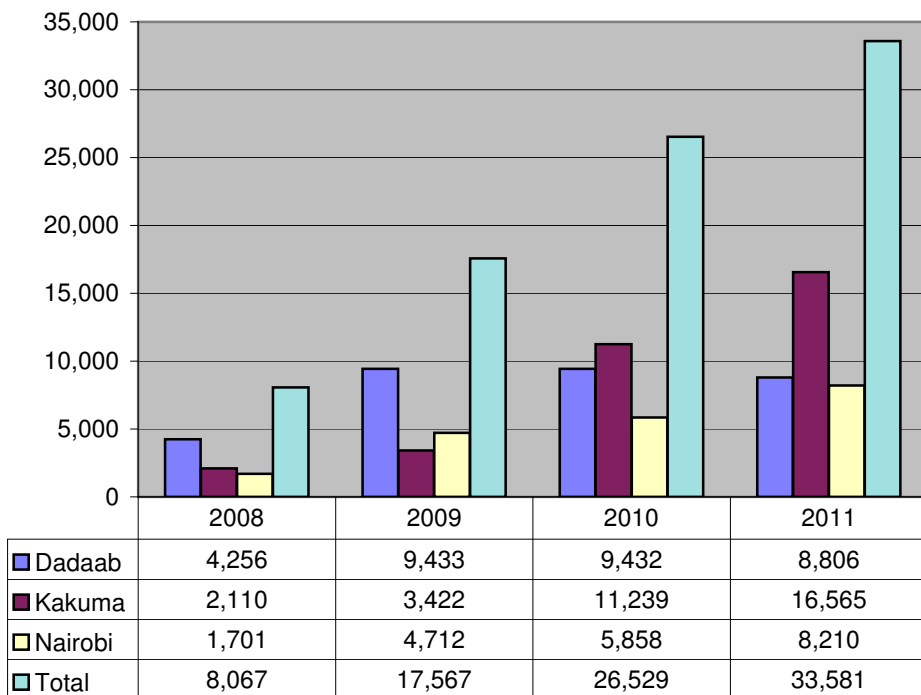


	2008	2009	2010	2011
Somalia	259,121	310,280	351,773	507,650
Sudan	28,496	20,315	20,528	17,380
Ethiopia	22,649	17,105	21,253	22,802
Total	320,609	358,929	402,907	557,340

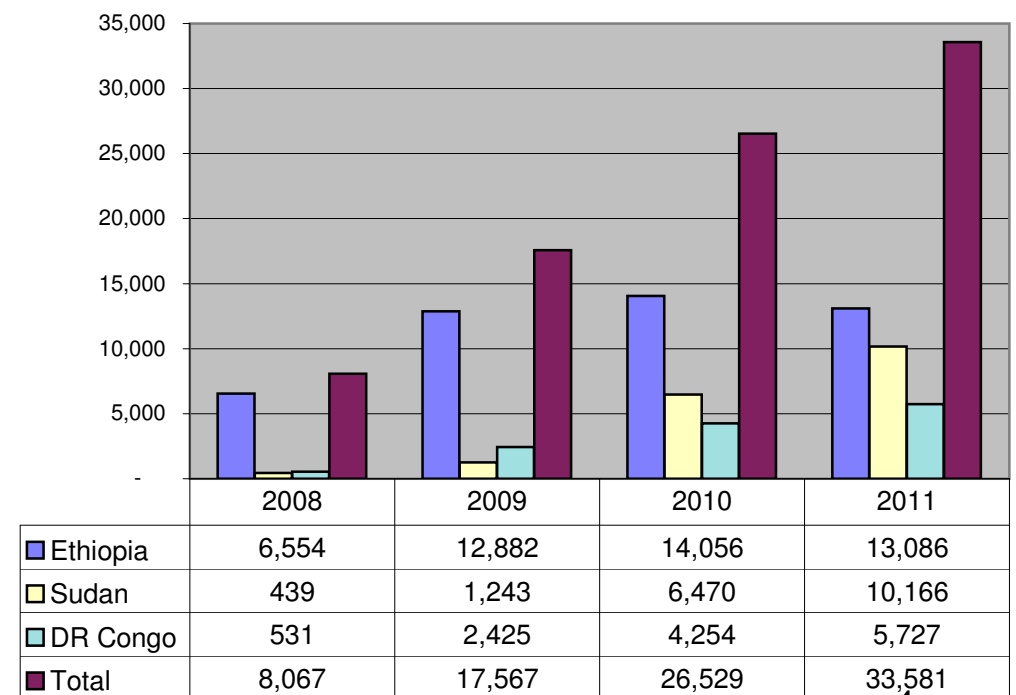
END OF YEAR ASYLUM SEEKERS STATISTICS BY COUNTRY OF ORIGIN AND LOCATION
September 2011

Country of Origin	2008				2009				2010				2011			
	Dadaab	Kakuma	Nairobi	Total	Dadaab	Kakuma	Nairobi	Total	Dadaab	Kakuma	Nairobi	Total	Dadaab	Kakuma	Nairobi	Total
Somalia	73	55	566	694	1,037	70	96	1,203	1,037	146	252	1,435	1,124	147	442	1,713
Ethiopia	4,233	1,298	1,023	6,554	8,954	1,648	2,280	12,882	8,954	1,726	3,376	14,056	6,993	1,860	4,233	13,086
Sudan	4	376	59	439	360	811	72	1,243	360	6,009	101	6,470	545	9,500	121	10,166
DR Congo	7	238	286	531	26	634	1,765	2,425	26	2,701	1,527	4,254	40	3,348	2,339	5,727
Rwanda	1	71	38	110	3	72	90	165	3	103	175	281	7	135	233	375
Eritrea	7	19	86	112	6	23	260	289	6	34	421	461	2	51	511	564
Burundi	2	53	74	129	69	174	102	345	69	521	141	731	74	1,367	171	1,612
Uganda	-	53	117	170	7	59	120	186	7	94	96	197	12	117	120	249
Other	2	2	18	22	8	1	23	32	7	51	21	79	9	40	40	89
Total	4,256	2,110	1,701	8,067	9,433	3,422	4,712	17,567	9,432	11,239	5,858	26,529	8,806	16,565	8,210	33,581

ASYLUM SEEKER TRENDS BY LOCATION



ASYLUM SEEKER TRENDS BY MAJOR COUNTRIES OF ORIGIN



KENYA REGISTRATION TREND BY LOCATION AND COUNTRY OF ORIGIN
September 2011

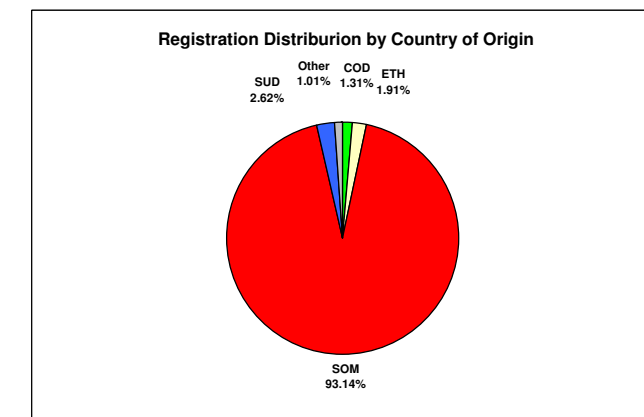
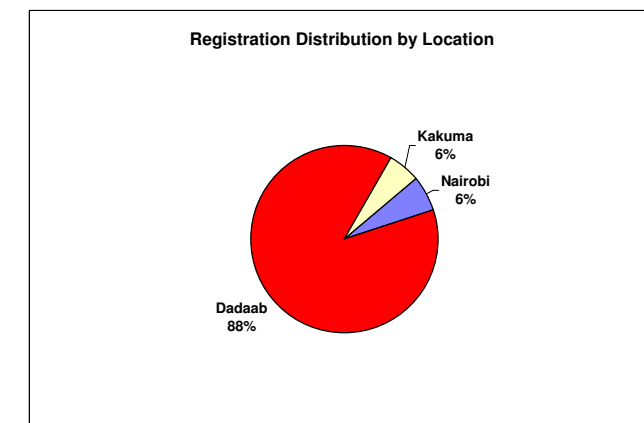
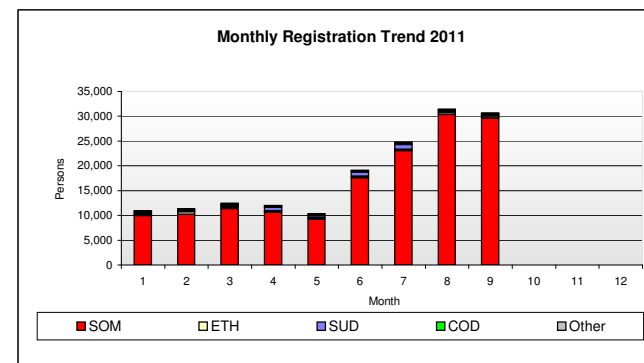
Month	Total	Country of Origin																		
		ARE	BDI	CMR	COD	ERT	ETH	GHA	GNB	ICO	NIG	PAK	RWA	SEY	SOM	SUD	TAN	UGA		
1	10,903		89		197	23	331	1		1				9			9,958	291		3
2	11,381		167	1	300	30	520			1	1			21	1		10,176	151	4	7
3	12,440	1	133		280	24	361							32			11,334	259	2	14
4	12,029		82		291	11	251					1		21			10,636	731		5
5	10,351		75		222	30	366			1	2			24			9,214	390	2	25
6	19,124		127		188	27	284			5	6			24			17,572	885	1	5
7	24,814		171		277	37	238				1			16			23,043	1,019		12
8	31,479		135		220	30	394				1	1		30			30,376	287		6
9	30,649	2	117		161	27	375	1		1				12			29,672	268		13
10																				
11																				
12																				
Total	163,170	3	1,096	1	2,136	239	3,120	2	1	9	11	1	189	1	151,981	4,281	9	90		

69863 93,307

Month	Total	Country of Origin																		
		ARE	BDI	CMR	COD	ERT	ETH	GHA	GNB	ICO	NIG	PAK	RWA	SEY	SOM	SUD	TAN	UGA		
1	832		5		132	20	113	1		1				9			547	1		3
2	1,088		14	1	201	28	261			1	1			20	1		553	2		5
3	881	1	13		124	23	138							18			556		2	6
4	1,146		13		112	8	91					1		12			908	1		
5	1,623		16		139	30	145				2			23			1,250	11	2	5
6	1,398		4		121	26	120			4	6			15			1,100	1	1	
7	1,007		10		59	33	95				1			13			792	1		3
8	1,035		2		134	29	85				1			15			764	3		2
9	1,058	2	4		104	26	98	1		1				12			795	3		12
10																				
11																				
12																				
Total	10,068	3	81	1	1,126	223	1,146	2		7	11	1	137	1	7,265	23	5	36		

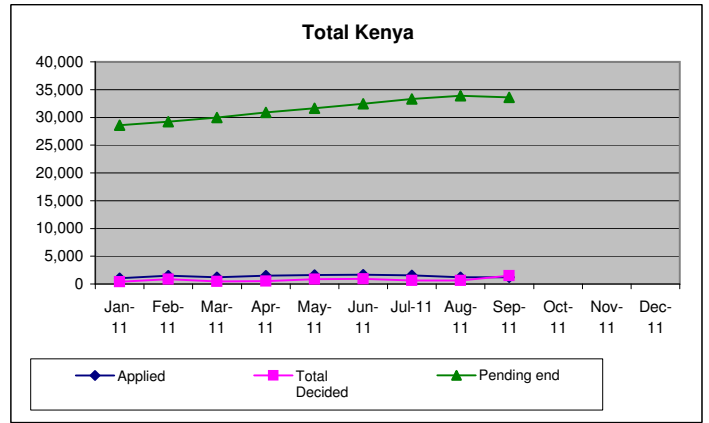
Month	Total	Country of Origin																		
		ARE	BDI	CMR	COD	ERT	ETH	GHA	GNB	ICO	NIG	PAK	RWA	SEY	SOM	SUD	TAN	UGA		
1	9,339				1		182								9,151	5				
2	9,460		2		1		214								9,241	2				
3	10,552		2		4	1	171								10,373					1
4	9,664						135								9,527	2				
5	7,817				4		117			1					7,678	13				4
6	16,492				2		137						1		16,300	52				
7	21,915				1		116						3		21,769	25				1
8	29,778				2		253								29,456	67				
9	29,019		1				231								28,755	32				
10																				
11																				
12																				
Total	144,036		5		15	1	1,556			1			4		142,250	198				6

Month	Total	Country of Origin																		
		ARE	BDI	CMR	COD	ERT	ETH	GHA	GNB	ICO	NIG	PAK	RWA	SEY	SOM	SUD	TAN	UGA		
1	732		84		64	3	36								260	285				
2	833		151		98	2	45			1			1		382	147		4		2
3	1,007		118		152		52						14		405	259				7
4	1,219		69		179	3	25						9		201	728				5
5	911		59		79		104						1		286	366				16
6	1,234		123		65	1	27			1			8		172	832				5
7	1,892		161		217	4	27								482	993				8
8	666		133		84	1	56						15		156	217				4
9	572		112		57	1	46								122	233				1
10																				
11																				
12																				
Total	9,066		1,010		995	15	418			1	1		48		2,466	4,060	4	48		

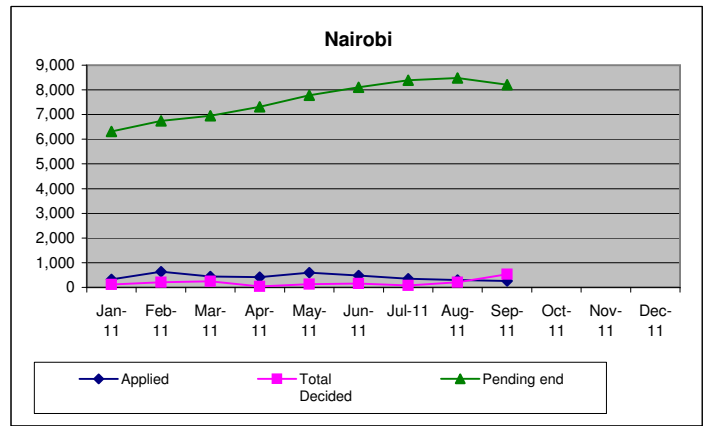


Individual Asylum Applications and Refugee Status Determination Trend - September 2011

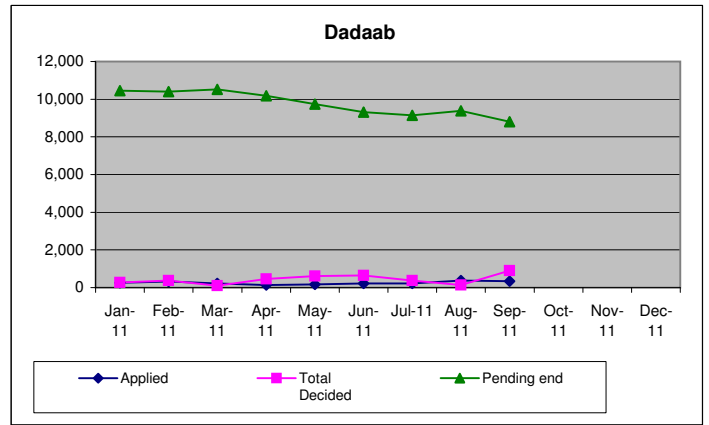
Total	Month	Pending begin	Applied	Reco-gnized	Reje-cted	Oth. Closed	Total Decided	Pending end	
	Jan-11	27,966	1,011	347	44	0	391	28,586	
	Feb-11	28,586	1,487	641	223	1	865	29,208	
	Mar-11	29,208	1,225	270	180	0	450	29,983	
	Apr-11	29,983	1,473	494	35	17	546	30,910	
	May-11	30,910	1,595	735	86	22	843	31,662	
	Jun-11	31,662	1,666	814	81	0	895	32,433	
	Jul-11	32,433	1,542	509	131	0	640	33,335	
	Aug-11	33,335	1,210	428	155	66	649	33,896	
	Sep-11	33,896	1,182	434	374	689	1,497	33,581	
	Oct-11								
	Nov-11								
Dec-11									
Total			12,391	4,672	1,309	795	6,776		



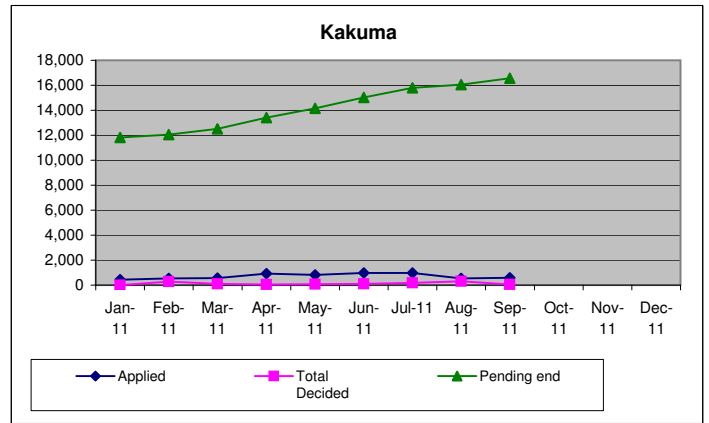
Nairobi	Month	Pending begin	Applied	Reco-gnized	Reje-cted	Oth. Closed	Total Decided	Pending end	
	Jan-11	6,110	324	75	43	0	118	6,316	
	Feb-11	6,316	637	111	94	0	205	6,748	
	Mar-11	6,748	443	115	127	0	242	6,949	
	Apr-11	6,949	410	18	24	1	43	7,316	
	May-11	7,316	602	58	76	0	134	7,784	
	Jun-11	7,784	481	83	76	0	159	8,106	
	Jul-11	8,106	355	23	50	0	73	8,388	
	Aug-11	8,388	299	117	89	0	206	8,481	
	Sep-11	8,481	264	174	361	0	535	8,210	
	Oct-11								
	Nov-11								
Dec-11									
Total			3,815	774	940	1	1,715		



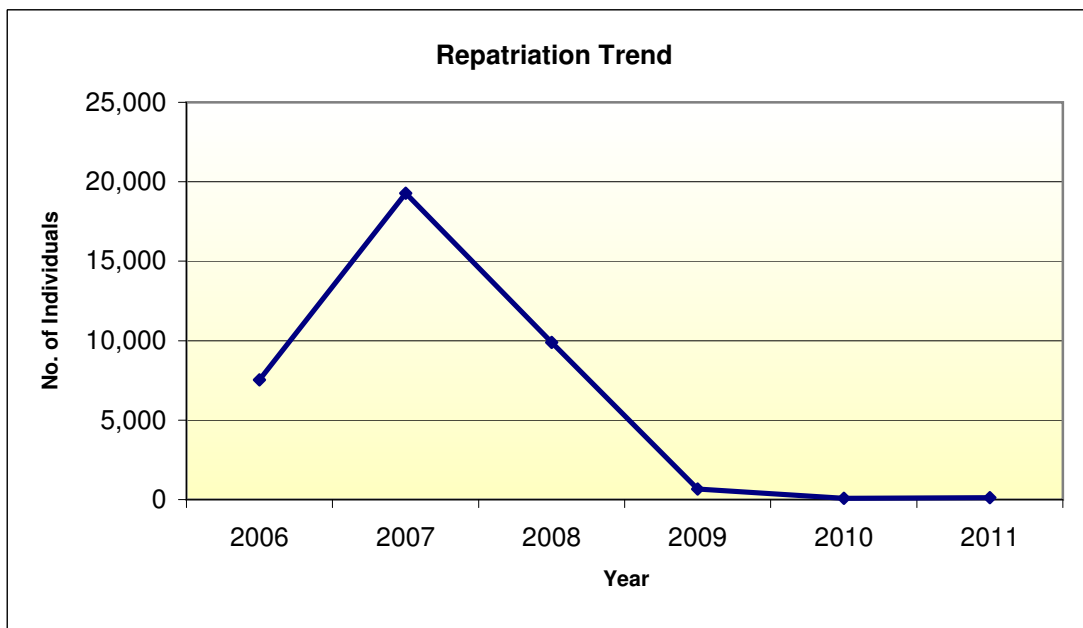
Dadaab	Month	Pending begin	Applied	Reco-gnized	Reje-cted	Oth. Closed	Total Decided	Pending end	
	Jan-11	10,471	250	271	1	0	272	10,449	
	Feb-11	10,449	320	368	1	0	369	10,400	
	Mar-11	10,400	224	103	0	0	103	10,521	
	Apr-11	10,521	132	452	2	10	464	10,189	
	May-11	10,189	166	620	0	0	620	9,735	
	Jun-11	9,735	221	643	0	0	643	9,313	
	Jul-11	9,313	213	377	0	0	377	9,149	
	Aug-11	9,149	367	142	0	0	142	9,374	
	Sep-11	9,374	336	213	2	689	904	8,806	
	Oct-11								
	Nov-11								
Dec-11									
Total			2,229	3,189	6	699	3,894		



Kakuma	Month	Pending begin	Applied	Reco-gnized	Reje-cted	Oth. Closed	Total Decided	Pending end	
	Jan-11	11,385	437	1	0	0	1	11,821	
	Feb-11	11,821	530	162	128	1	291	12,060	
	Mar-11	12,060	558	52	53	0	105	12,513	
	Apr-11	12,513	931	24	9	6	39	13,405	
	May-11	13,405	827	57	10	22	89	14,143	
	Jun-11	14,143	964	88	5	0	93	15,014	
	Jul-11	15,014	974	109	81	0	190	15,798	
	Aug-11	15,798	544	169	66	66	301	16,041	
	Sep-11	16,041	582	47	11	0	58	16,565	
	Oct-11								
	Nov-11								
Dec-11									
Total			6,347	709	363	95	1,167		



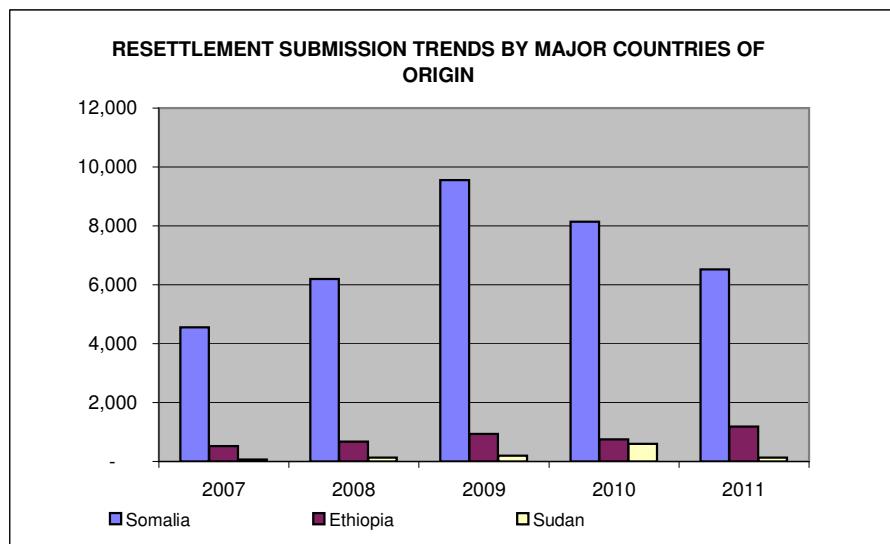
VOLUNTARY REPATRIATION FROM KENYA BY COUNTRY OF ORIGIN AS OF SEPTEMBER 2011							
Country of Origin	Year						
	2006	2007	2008	2009	2010	2011	Total
Sudan	7,482	19,237	9,876	665	64	28	37,352
Burundi	35	22	6	2	1		66
Rwanda	7	12	-	1	2	2	24
Mozambique	5	-	-	-	5		10
Somalia	2	-	-	-	6	69	77
Congo	5	-	-	-	3	2	10
Ethiopia	2	1	1	-	-		4
Uganda	-	1	1	-	-	4	6
Other	-	-	-	-	2	6	8
Total	7,538	19,273	9,884	668	83	111	37,557



RESETTLEMENT SUBMISSION BY COUNTRY OF ORIGIN - SEPTEMBER 2011						
Country of Origin	2007	2008	2009	2010	2011	Total
Somalia	4,549	6,199	9,552	8,143	6,521	34,964
Ethiopia	521	673	940	752	1,188	4,074
Sudan	61	130	198	602	133	1,124
DR Congo	31	173	90	223	132	649
Eritrea	33	73	63	67	14	250
Uganda	6	14	2	13	13	48
Burundi	23	106	22	15	16	182
Rwanda	18	6	28	45	9	106
Other	4	1	9	18	-	32
Total	5,246	7,375	10,904	9,878	8,026	41,429

RESETTLEMENT SUBMISSION BY COUNTRY OF RESETTLEMENT - SEPTEMBER 2011						
Country of Submission	2007	2008	2009	2010	2011	Total
United States	4,487	6,239	10,264	8,463	6,531	35,984
Australia	118	501	271	595	281	1,766
Canada	364	596	161	23	-	1,144
United Kingdom	166	1	8	280	653	1,108
Sweden	-	-	-	352	380	732
Netherlands	72	1	133	8	109	323
Denmark	-	1	2	132		135
Norway	14	-	15	16	72	117
Other	25	36	50	9		120
Total	5,246	7,375	10,904	9,878	8,026	41,429

* As of 30 September 2011



RESETTLEMENT DEPARTURES BY COUNTRY OF ORIGIN							
Country of Origin	2006	2007	2008	2009	2010	2011*	Total
Somalia	4,004	4,798	2,417	3,606	2,776	898	18,499
Sudan	1,002	526	340	101	103	30	2,102
Ethiopia	949	1,021	824	475	606	356	4,231
Rwanda	56	54	58	18	44	1	231
Uganda	15	54	55	16	13	6	159
Congo	82	-	173	175	179	18	627
Burundi	51	7	56	42	6	12	174
Eritrea	48	47	66	40	39	10	250
Other	1	-	-	1	7	120	129
Total	6,208	6,507	3,989	4,474	3,773	1,451	26,402

RESETTLEMENT DEPARTURES BY COUNTRY OF RESETTLEMENT							
Country of Resettlement	2006	2007	2008	2009	2010	2011*	Total
USA	4,078	5,196	2,384	3,687	2,783	780	18,908
Canada	1,112	787	829	246	280	220	3,474
Australia	902	513	527	450	183	88	2,663
Sweden	60	3	10	29	327	227	656
United Kingdom	7	-	-	15	199	29	250
Netherlands	12	-	37	44	-	-	93
Norway	20	-	4	-	-	13	37
New Zealand	7	-	-	15	-	5	27
Other	17	8	198	3	1	89	316
Total	6,215	6,507	3,989	4,489	3,773	1,451	26,424

* As of 31 July 2011

