

Dadaab Measles Outbreak

Measles cases: main observations from January to October 2011

October 1, - October 7, 2011

- **HIGHLIGHTS:**

- Measles cases continue to decrease.
- One measles deaths occurring during the reporting week
- Total of 1313 measles cases since January 2011
- 42 cases had rash onset this week

- **The outbreak of measles in Dadaab camp is on a downward trend.**
 - 87 cases have been reported in the first week of October (week 40). However, of those reported in week 40 only 42 cases had rash onset in week 39 (see **Figure1**)
 - Total of 1313 measles cases since January 2011
- **One death occurred this week**
 - Overall Dadaab case fatality rate 2.4% (32/1313);
- **Overall reduction in number of reported clinical cases in all camps (see Figure 3)**
- **Downward trend in both old and new arrivals**
 - The outbreak has reduced in both new arrivals¹ and those already established in the camps (see **Figure 4**)
- **Majority of cases still in adults**
 - Patients above 14 years of age represent 60% of cases (see **Figure 5**)
 - All age-groups experiencing a decrease in number of cases

¹ Less than 3 months in the camp.

HIGHLIGHTED RECOMMENDATIONS:

- Continue expanding active case finding through community health workers
- Once health posts functioning again actively seek children who are turning six months of age and ensure vaccination against measles (need to be revaccinated after nine months) and strengthen tracing of immunization defaulters in under five year old children through CHWs and contacts with health care providers

Recommendations and follow-up:

- Strengthen case finding
 - **Active case finding at community level** by CHWs through daily enquiries about cases of Fever AND Rash.
 - *Follow-up of recommendation:*
 - *Better active case finding at the community level*
- Strengthen reporting
 - *FOLLOW UP:*
 - *Improvement in reporting of deaths— Hagadera and Dagahaley need to immediately report deaths and do a chart review of all deaths*
- Reinforce and expand vaccination policy
 - *FOLLOW UP:*
 - *Vaccination of 6 months to 29 years old at reception: Ongoing in the 3 camps*
 - *Staff vaccination: has taken place in all camps*
 - *Vaccination of pediatric patients: Needs to be reinforced*
 - *Vaccination of household contacts: Needs to be reinforced*
- Reinforce isolation procedures
 - *FOLLOW UP:*
 - *Admission of only complicated cases: Being implemented.*
 - *Isolation of cases in hospital: Being implemented.*
- Case management
 - Assess all cases for complications and determine if can be managed at home, health post level or need hospitalization.
 - *FOLLOW UP:*
 - *Care being availed in all hospitals.*
 - *Home based management being done in Ifo with case identification by CHWs and initial management by qualified staff*
 - *Admission of only complicated cases: Being implemented.*
 - *Isolation of cases in hospital: Being implemented.*

Figures²

Figure 1 - Number of cases of measles per week Dadaab 2011

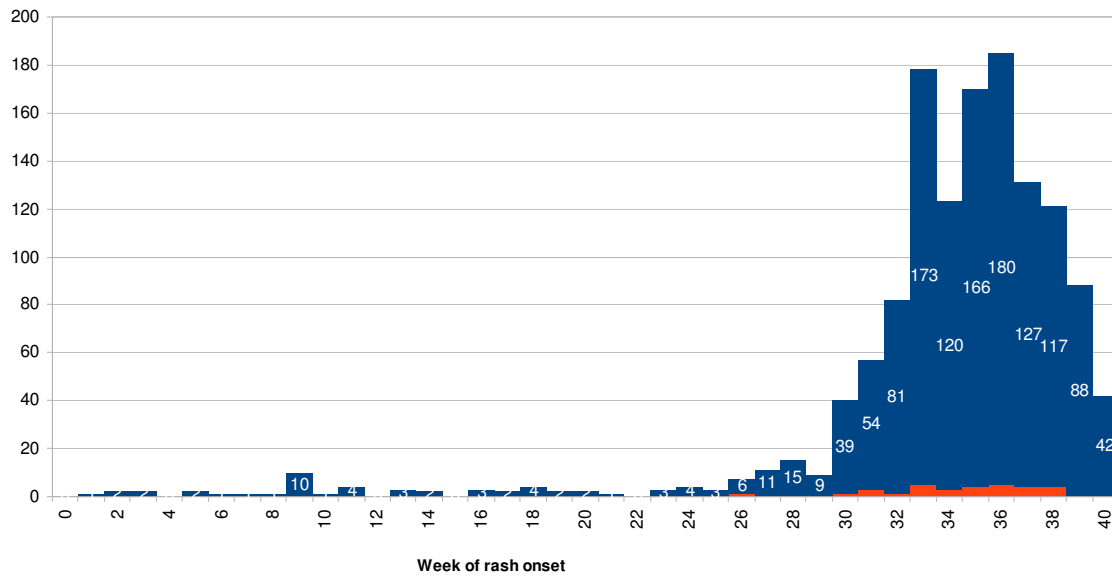


Figure 2 - Number of cases of measles per month Dadaab 2011

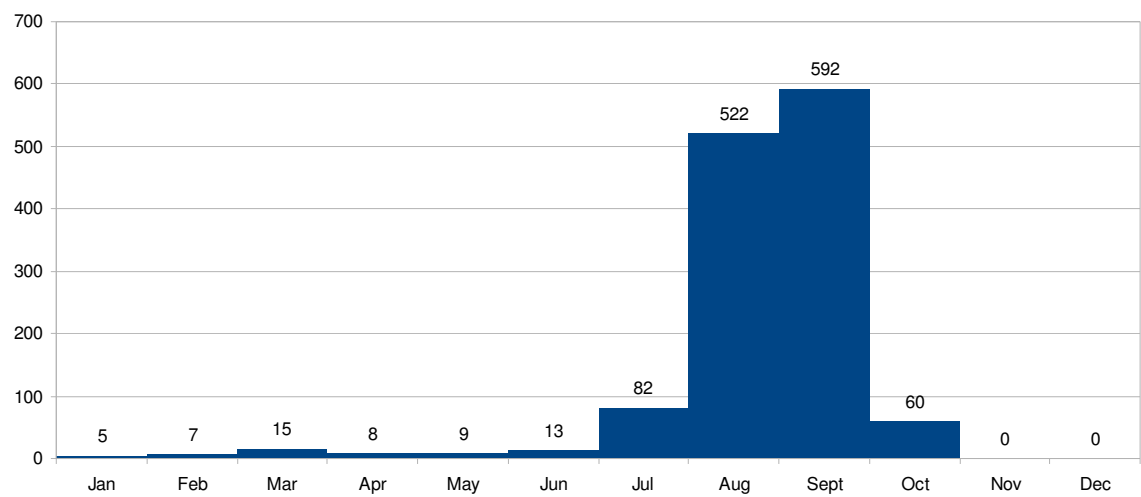


Figure 3 - Number of cases per month and camp Dadaab 2011

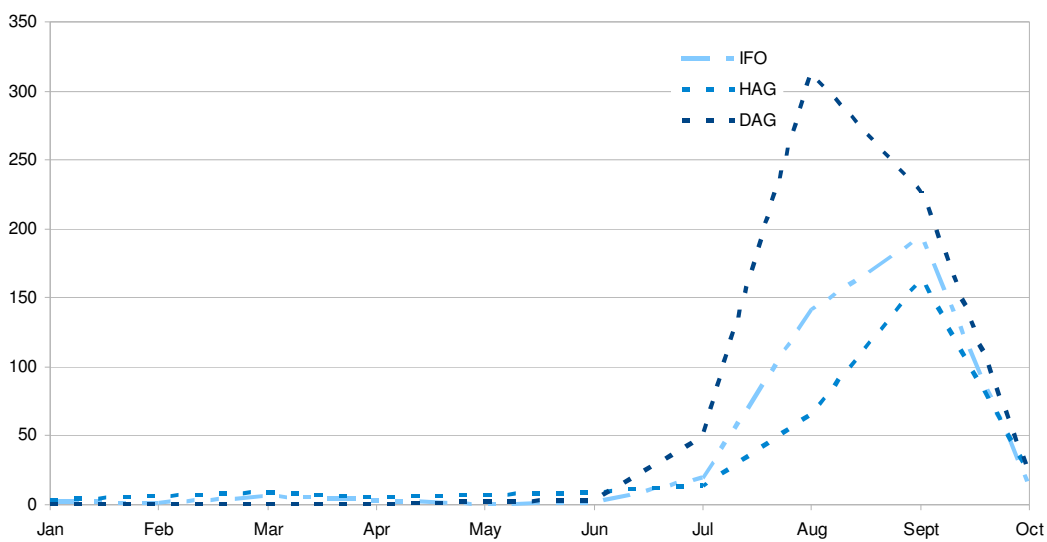
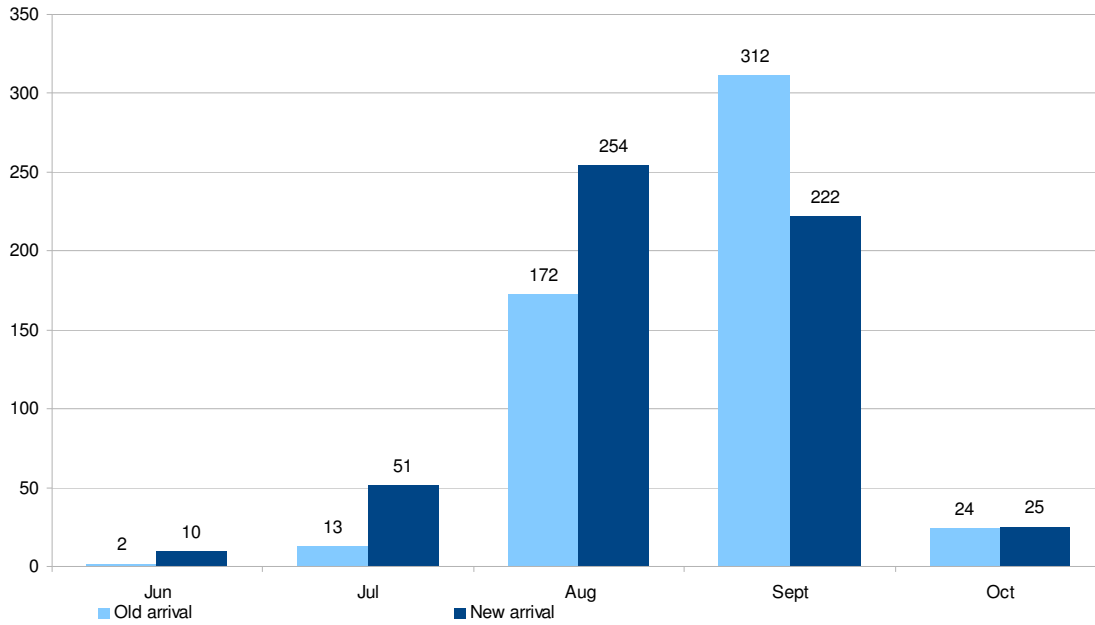


Figure 4 - Number of cases of measles by arrival status Dadaab 2011



**Figure 5 Percentage of cases of measles by age group Dadaab, January-- October,2011
(N= 1313)**

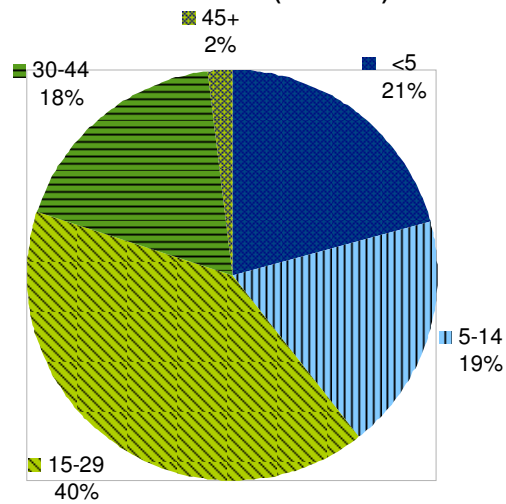


Figure 6 Number of cases of measles by age-group and month Dadaab 2011

