

## Dollo Ado Population Statistical Report

As of 23 Feb 2012

Figure 1.1 - Total Refugee Population in Dollo Ado

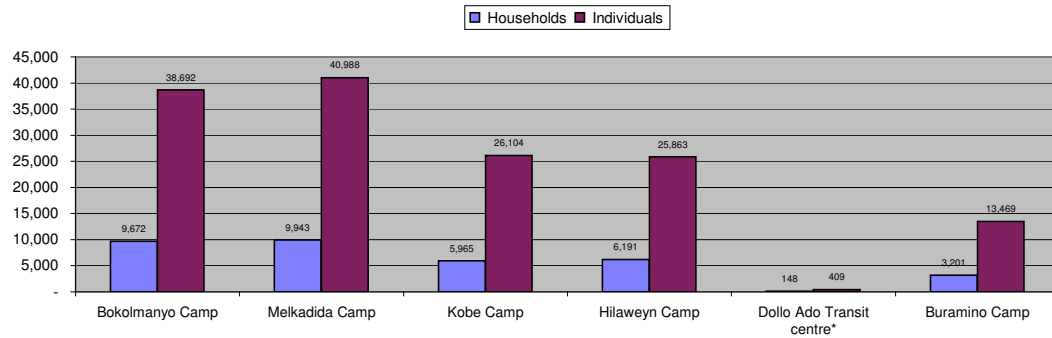
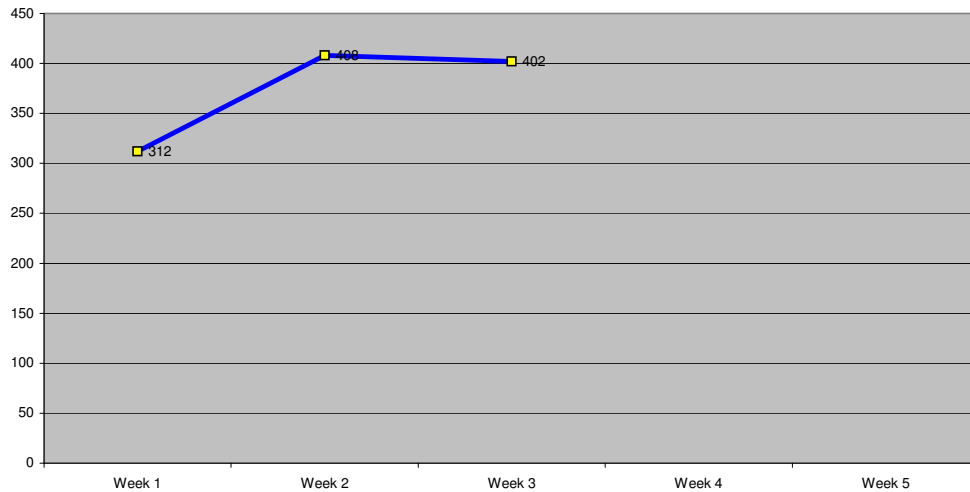


Table 1.1 - Total Refugee Population in Dollo Ado

Site/Camp	As of 31 Dec 2010		As of 31 Dec 2011		Current Total	
	Households	Individuals	Households	Individuals	Households	Individuals
Bokolmany Camp	3,988	14,988	9,624	38,501	9,672	38,692
Melkadida Camp	6,452	25,491	10,024	40,696	9,943	40,988
Kobe Camp	n/a	n/a	5,946	26,033	5,965	26,104
Hilaweyn Camp	n/a	n/a	6,119	25,747	6,191	25,863
Buramino Camp	n/a	n/a	911	4,045	3,201	13,469
<b>Camp Sub-Total</b>	<b>10,440</b>	<b>40,479</b>	<b>32,624</b>	<b>135,022</b>	<b>34,972</b>	<b>145,116</b>
Dollo Ado Transit centre*	n/a	n/a	1,902	7,284	148	409
<b>Temporary Locations Sub-Total</b>	<b>n/a</b>	<b>n/a</b>	<b>n/a</b>	<b>n/a</b>	<b>148</b>	<b>409</b>
<b>GRAND TOTAL ALL LOCATIONS</b>	<b>10,440</b>	<b>40,479</b>	<b>34,526</b>	<b>142,306</b>	<b>35,120</b>	<b>145,525</b>

\* Individuals currently in the Transit Centre. All new arrivals are registered at the Transit Centre and are subsequently relocated to the camps.

Figure 1.2 - New Arrivals at Reception Centre During Current Month (Weekly)



**Table 1.2 - Daily New Arrivals and Pre-registration by ARRA at the Reception Centre**

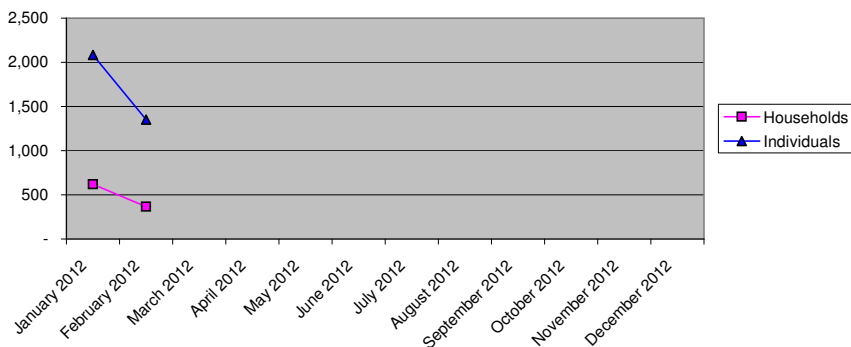
Date	Newly Arrived Individuals	Pre-registered by ARRA *
Wed 01 Feb 12	193	193
Thu 02 Feb 12	86	86
Fri 03 Feb 12		**
Sat 04 Feb 12	33	33
Sun 05 Feb 12		**
Mon 06 Feb 12	99	81
Tue 07 Feb 12	89	76
Wed 08 Feb 12	93	82
Thu 09 Feb 12	57	57
Fri 10 Feb 12	70	70
Sat 11 Feb 12		**
Sun 12 Feb 12		**
Mon 13 Feb 12	169	164
Tue 14 Feb 12	122	112
Wed 15 Feb 12	43	43
Thu 16 Feb 12	31	23
Fri 17 Feb 12	26	26
Sat 18 Feb 12	11	11
Sun 19 Feb 12		**
Mon 20 Feb 12	80	62
Tue 21 Feb 12	112	102
Wed 22 Feb 12	102	94
Thu 23 Feb 12	36	36
Fri 24 Feb 12		
Sat 25 Feb 12		
Sun 26 Feb 12		
Mon 27 Feb 12		
Tue 28 Feb 12		
Wed 29 Feb 12		
<b>TOTAL THIS MONTH</b>	<b>1,452</b>	<b>1,351</b>

\* Pre-registration by ARRA is not necessarily done on the day of Arrival

\*\* Represent days when ARRA was not receiving Asylum seekers.

The number of those received during these days is include in the figure of next receiving day.

**Figure 1.3 - Pre-Registration Trends in 2012 (Reception Centre/ ARRA)**



Note: these are registration volumes by month, not cumulative figures.

**Table 1.3 - Pre-Registration Trends in 2012 (Reception Centre/ ARRA)**

Month	Households	Individuals
January 2012	621	2,084
February 2012	367	1,351
March 2012		
April 2012		
May 2012		
June 2012		
July 2012		
August 2012		
September 2012		
October 2012		
November 2012		
December 2012		
<b>Total</b>	<b>988</b>	<b>3,435</b>

**Table 1.4 - Registration & Relocation Trends in Transit Centre up to date**

Stage of Registration & Relocation	Individuals
Total individuals fully registered so far this month	1,253
Total individuals relocated to camps so far this month	2266
Total individuals fully processed (have ration card), but not yet relocated	365

## Camp population by Age and Sex breakdown

As of 23 Feb 2012

Table 2.1 - ALL CAMPS Demographic Breakdown\*

Age Group	Sex				Total	
	Male	( % )	Female	( % )	Total	( % )
0 - 4	15,805	10.9%	15,339	10.6%	31,144	21.5%
5 - 11	24,585	16.9%	23,740	16.4%	48,325	33.3%
12 - 17	9,500	6.5%	8,534	5.9%	18,034	12.4%
18 - 59	16,197	11.2%	27,983	19.3%	44,180	30.4%
60 and above	1,744	1.2%	1,688	1.2%	3,432	2.4%
<b>Total ALL CAMPS</b>	<b>67,831</b>	<b>46.7%</b>	<b>77,284</b>	<b>53.3%</b>	<b>145,115</b>	<b>100.0%</b>

\* These total figures apply only to camps, not to the Transit Centre or Reception Centre

Figure 2.1 - ALL CAMPS Demographic Breakdown\*

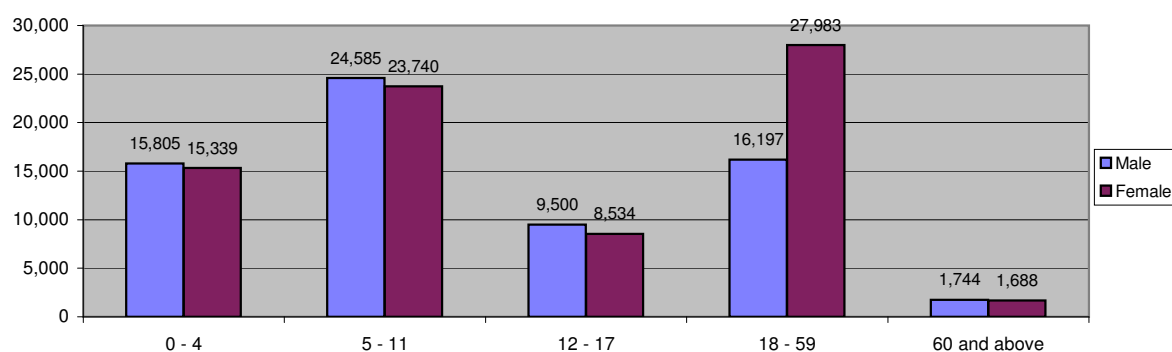


Table 2.2 - Melkadida Camp Demographic Breakdown

911

Age Group	Sex				Total	
	Male	( % )	Female	( % )	Total	( % )
0 - 4	3,979	9.7%	3,748	9.1%	7,727	18.9%
5 - 11	7,365	18.0%	7,191	17.5%	14,556	35.5%
12 - 17	2,904	7.1%	2,738	6.7%	5,642	13.8%
18 - 59	4,151	10.1%	7,998	19.5%	12,149	29.6%
60 and above	462	1.1%	452	1.1%	914	2.2%
<b>Total Malkadida</b>	<b>18,861</b>	<b>46.0%</b>	<b>22,127</b>	<b>54.0%</b>	<b>40,988</b>	<b>100.0%</b>

Figure 2.2 - Melkadida Camp Demographic Breakdown\*

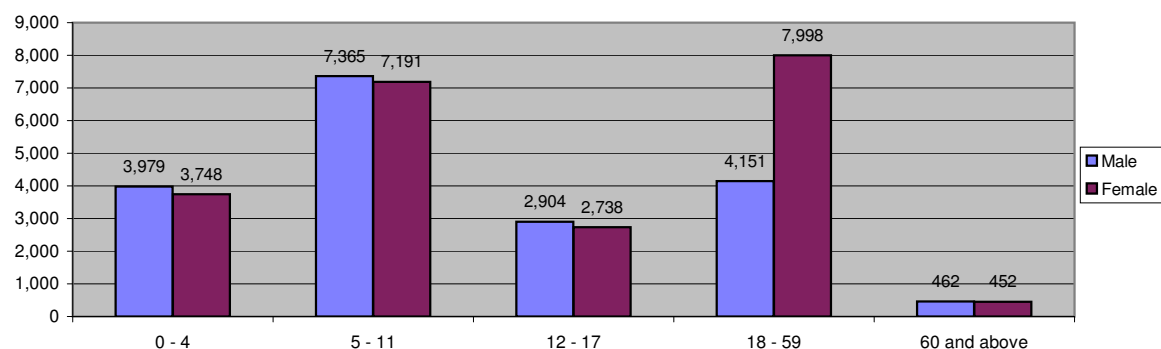


Table 2.3 - Bokolmanyo Camp Demographic Breakdown

Age Group	Sex				Total	
	Male	(%)	Female	(%)	Total	(%)
0 - 4	3,591	9.3%	3,661	9.5%	7,252	18.7%
5 - 11	6,784	17.5%	6,541	16.9%	13,325	34.4%
12 - 17	2,858	7.4%	2,404	6.2%	5,262	13.6%
18 - 59	4,392	11.4%	7,631	19.7%	12,023	31.1%
60 and above	428	1.1%	401	1.0%	829	2.1%
<b>Total Bokolmanyo</b>	<b>18,053</b>	<b>46.7%</b>	<b>20,638</b>	<b>53.3%</b>	<b>38,691</b>	<b>100.0%</b>

Figure 2.3 - Bokolmanyo Camp Demographic Breakdown\*

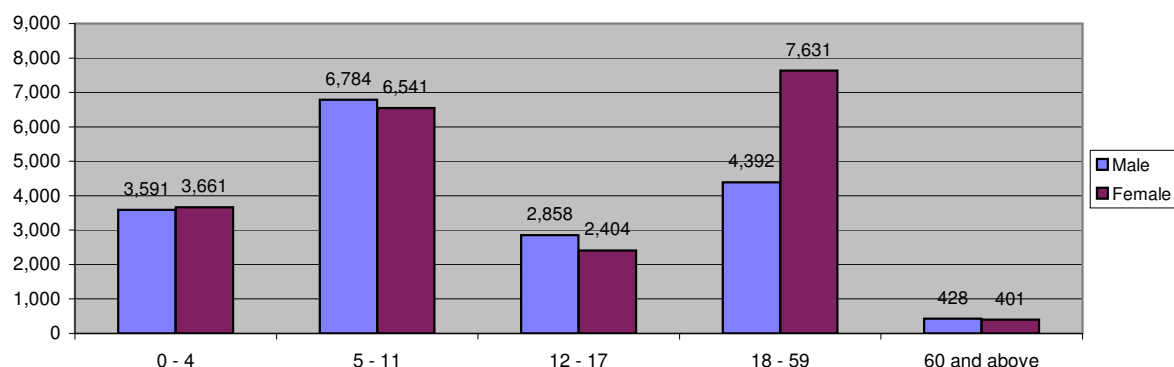


Table 2.4 - Kobe Camp Demographic Breakdown

Age Group	Sex				Total	
	Male	(%)	Female	(%)	Total	(%)
0 - 4	2,748	10.5%	2,633	10.1%	5,381	20.6%
5 - 11	4,507	17.3%	4,149	15.9%	8,656	33.2%
12 - 17	1,614	6.2%	1,366	5.2%	2,980	11.4%
18 - 59	3,330	12.8%	4,958	19.0%	8,288	31.7%
60 and above	416	1.6%	383	1.5%	799	3.1%
<b>Total Kobe</b>	<b>12,615</b>	<b>48.3%</b>	<b>13,489</b>	<b>51.7%</b>	<b>26,104</b>	<b>100.0%</b>

Figure 2.4 - Kobe Camp Demographic Breakdown\*

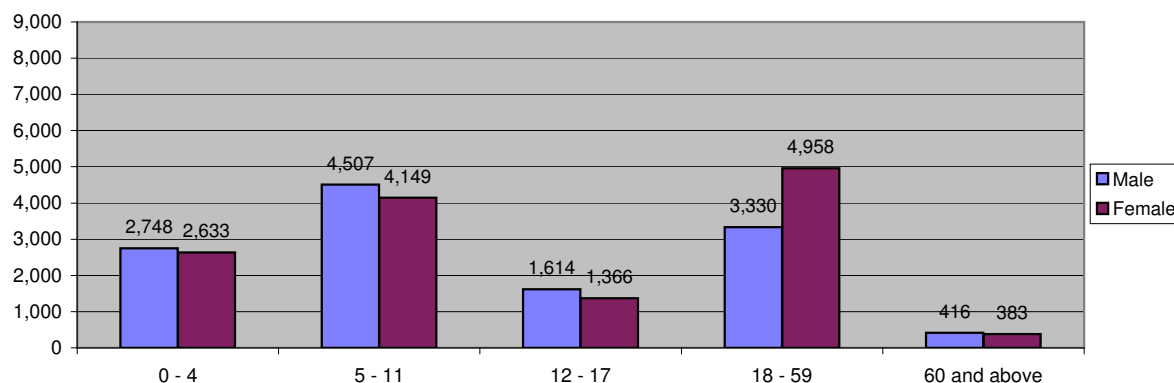


Table 2.5 - Hilaweyn Camp Demographic Breakdown

Age Group	Sex				Total	
	Male	(%)	Female	(%)	Total	(%)
0 - 4	3,552	13.7%	3,459	13.4%	7,011	27.1%
5 - 11	3,900	15.1%	3,851	14.9%	7,751	30.0%
12 - 17	1,438	5.6%	1,328	5.1%	2,766	10.7%
18 - 59	2,885	11.2%	4,867	18.8%	7,752	30.0%
60 and above	302	1.2%	281	1.1%	583	2.3%
<b>Total Hilaweyn</b>	<b>12,077</b>	<b>46.7%</b>	<b>13,786</b>	<b>53.3%</b>	<b>25,863</b>	<b>100.0%</b>

Figure 2.5 - Hilaweyn Camp Demographic Breakdown\*

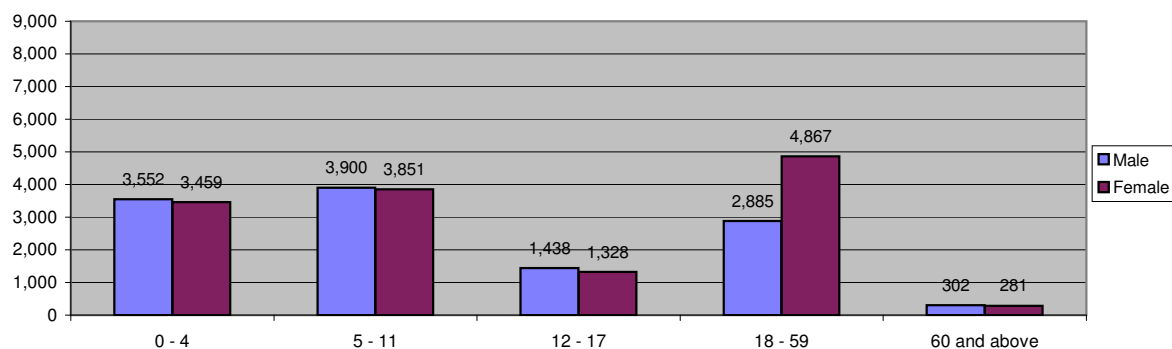


Table 2.6 - Buramino Camp Demographic Breakdown

Age Group	Sex				Total	
	Male	(%)	Female	(%)	Total	(%)
0 - 4	1,935	14.4%	1,838	13.6%	3,773	28.0%
5 - 11	2,029	15.1%	2,008	14.9%	4,037	30.0%
12 - 17	686	5.1%	698	5.2%	1,384	10.3%
18 - 59	1,439	10.7%	2,529	18.8%	3,968	29.5%
60 and above	136	1.0%	171	1.3%	307	2.3%
<b>Total Buramino</b>	<b>6,225</b>	<b>46.2%</b>	<b>7,244</b>	<b>53.8%</b>	<b>13,469</b>	<b>100.0%</b>

Figure 2.6 - Buramino Camp Demographic Breakdown\*

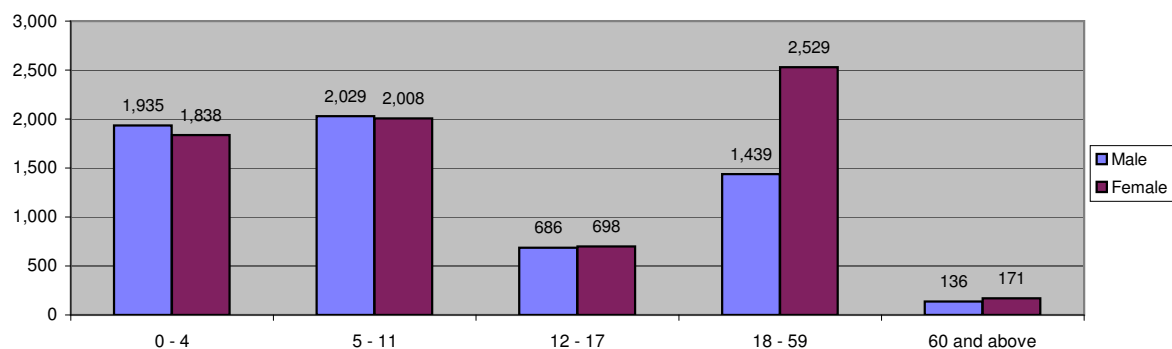


Table 2.7 - Dollo Ado Transit Centre Demographic Breakdown

Age Group	Sex				Total	
	Male	(%)	Female	(%)	Total	(%)
0 - 4	57	13.9%	61	14.9%	118	28.9%
5 - 11	54	13.2%	49	12.0%	103	25.2%
12 - 17	29	7.1%	22	5.4%	51	12.5%
18 - 59	61	14.9%	67	16.4%	128	31.3%
60 and above	5	1.2%	4	1.0%	9	2.2%
<b>Total TransitCentre</b>	<b>206</b>	<b>50.4%</b>	<b>203</b>	<b>49.6%</b>	<b>409</b>	<b>100.0%</b>

Figure 2.7 - Dollo Ado Transit Centre Demographic Breakdown

