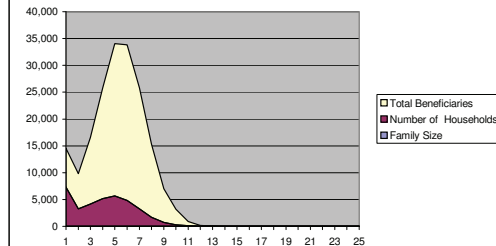


Camp Population Composition

As of 30 April 2012

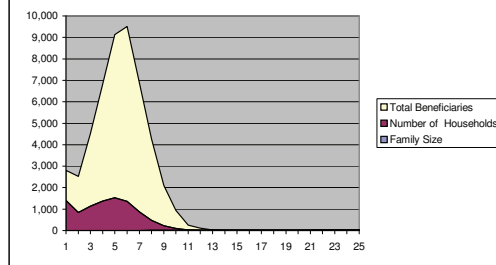
Family Size	Number of Households	Total Beneficiaries
1	7,271	7,271
2	3,264	6,528
3	4,135	12,405
4	5,161	20,644
5	5,676	28,380
6	4,828	28,968
7	3,225	22,575
8	1,699	13,592
9	701	6,309
10	292	2,920
11	74	814
12	14	168
13	2	26
14		
15		
16		
17		
18		
19		
20		
21		
22		
23		
24		
25		
Total	36,342	150,600

Figure 4.1- ALL CAMPS Household Size



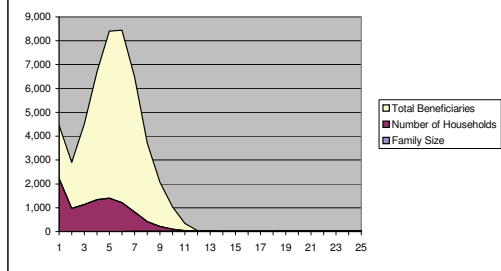
Family Size	Number of Households	Total Beneficiaries
1	1,404	1,404
2	843	1,686
3	1,128	3,384
4	1,366	5,464
5	1,520	7,600
6	1,358	8,148
7	859	6,013
8	474	3,792
9	210	1,890
10	85	850
11	20	220
12	8	96
13	1	13
14		
15		
16		
17		
18		
19		
20		
21		
22		
23		
24		
25		
Total	9,276	40,560

Figure 4.2- Melkadida Camp Household Size



Family Size	Number of Households	Total Beneficiaries
1	2,226	2,226
2	969	1,938
3	1,128	3,384
4	1,339	5,356
5	1,400	7,000
6	1,205	7,230
7	808	5,656
8	411	3,288
9	206	1,854
10	93	930
11	27	297
12	2	24
13	1	13
14		
15		
16		
17		
18		
19		
20		
21		
22		
23		
24		
25		
Total	9,815	39,196

Figure 4.3- Bokolmanyo Camp Household Size



Family Size	Number of Households	Total Beneficiaries
1	1,293	1,293
2	547	1,094
3	699	2,097
4	823	3,292
5	987	4,935
6	883	5,298
7	621	4,347
8	315	2,520
9	130	1,170
10	52	520
11	11	121
12	1	12
13		
14		
15		
16		
17		
18		
19		
20		
21		
22		
23		
24		
25		
Total	6,362	26,699

Figure 4.4- Kobe Camp Household Size

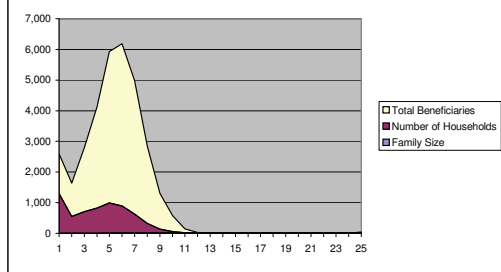


Table 4.5 - Hilaweyn Camp Household Size		
Family Size	Number of Households	Total Beneficiaries
1	1273	1,273
2	544	1,088
3	709	2,127
4	985	3,940
5	1,043	5,215
6	860	5,160
7	567	3,969
8	301	2,408
9	88	792
10	35	350
11	8	88
12		
13		
14		
15		
16		
17		
18		
19		
20		
21		
22		
23		
24		
25		
Total	6,413	26,410

Figure 4.5- Hilaweyn Camp Household Size

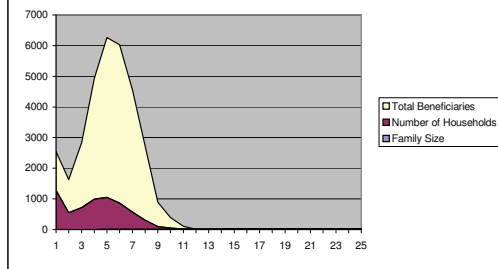


Table 4.6 - Buramino Camp Household Size		
Family Size	Number of Households	Total Beneficiaries
1	1075	1,075
2	361	722
3	471	1,413
4	648	2,592
5	726	3,630
6	522	3,132
7	370	2,590
8	198	1,584
9	67	603
10	27	270
11	8	88
12	3	36
13		
14		
15		
16		
17		
18		
19		
20		
21		
22		
23		
24		
25		
Total	4,476	17,735

Figure 4.6- Buramino Camp Household Size

