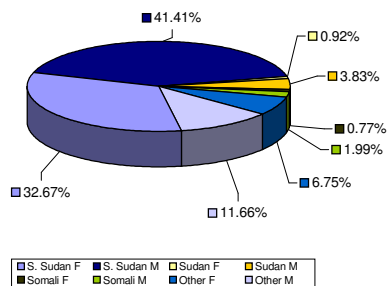


### Weekly New Registration Population Composition 21/05/2012 - 25/05/2012

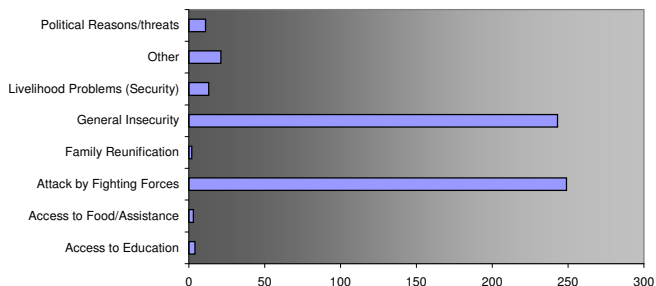


	Breakdown by Country of Origin / Sex								Breakdown by Individuals/Households		
	S. Sudan		Sudan		Somali		Other		F	M	Total
	F	M	F	M	F	M	F	M			
<b>Individuals</b>	213	270	6	25	5	13	44	76	268	384	652
<b>Households</b>	62	54	2	13	4	10	11	38	79	115	194

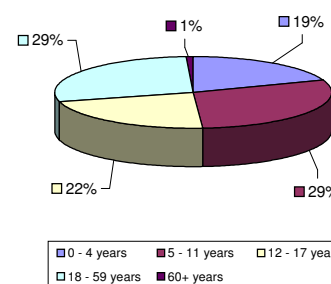
New arrivals, by sex and COO



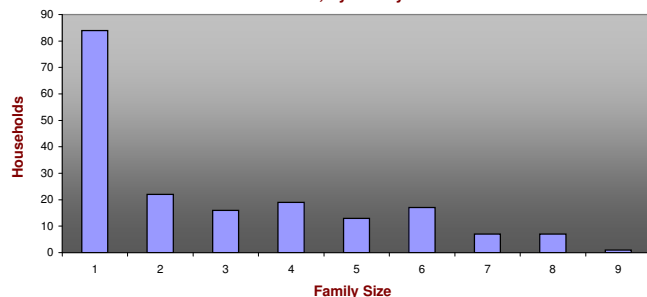
Reasons for Flight



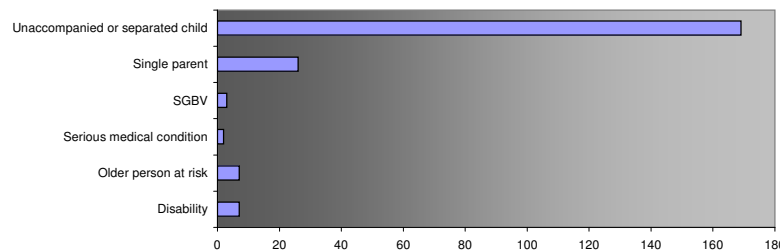
New Arrivals Breakdown, By Age Cohort



Households, by Family Size



Special Needs Identified



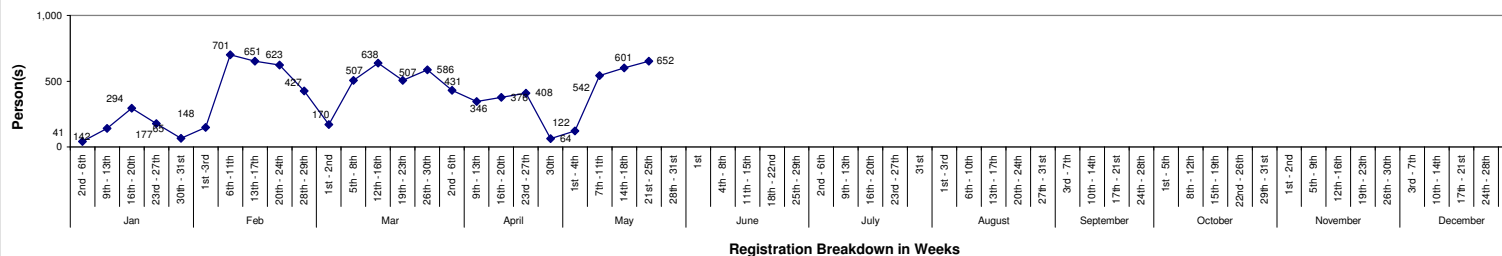
**Notes:** A total of 9,219 new arrivals have been registered since the start of 2012; with 640 arriving from Burundi, 464 from Democratic Republic of Congo (DRC), 5 from Eritrea, 489 from Ethiopia, 1 from Iran, 1 from Ivory Coast, 46 from Rwanda, 460 from Somalia, 5,746 from South Sudan, 1,276 from Sudan, 1 from Tanzania and 90 from Uganda.

652 individuals were registered during the Twenty-first week of 2012 [21st-25th May 2012]; 42 from Burundi, 29 from Democratic Republic of Congo (DRC), 29 from Ethiopia, 18 from Somalia, 483 from South Sudan, 31 from Sudan and 20 from Uganda. As at 25th May 2012, the overall population in Kakuma Refugee Camp stood at 96,353.

The average family size registered during the reporting period stood at 3.4 individuals. Family size 1 households represented 43.30% of all newly registered households.

As at 25th May 2012, the total South Sudanese 'returnee' figure stands at 196 individuals; mainly from Jonglei, Equatoria and Bahr el Ghazal States.

Weekly Registration Trends



Registration Breakdown in Weeks

NB: This report reflects registration trends. In addition to new arrivals reported here, the overall population in Kakuma also increases through new births, in-situ registration (of persons who arrived in a previous period but reported for registration later), family reunification, and various other data adjustments. Analysis and projections are based on actual persons registered in the UNHCR registration database (proGres)