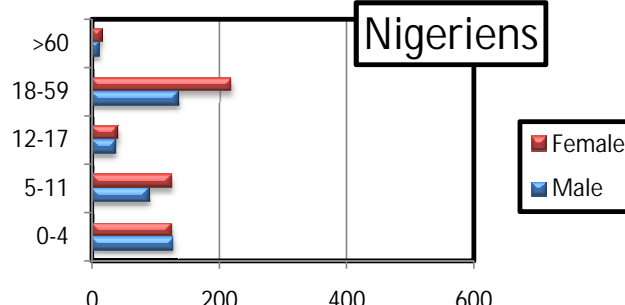
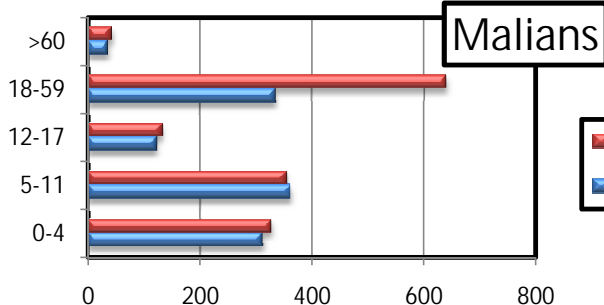


## Profile of the registered population

	Level 1 registration					un-registered				
	Malian		Nigerien		Total	Malian		Nigerien		Total
MANGAIZE	739	2661	249	927	988	3588				

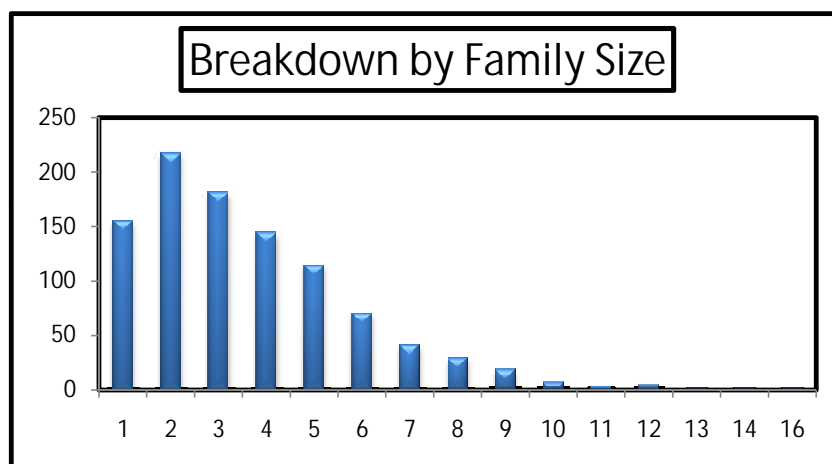
### a. Age and gender Breakdown

MANGAIZE		Malian					Nigerien				
		0-4	5-11	12-17	18-59	>60	0-4	5-11	12-17	18-59	>60
	Male	312	361	122	335	36	128	89	38	136	11
	Female	328	353	132	640	42	125	125	41	218	16
	Total	640	714	254	975	78	253	214	79	354	27



### b. By family size

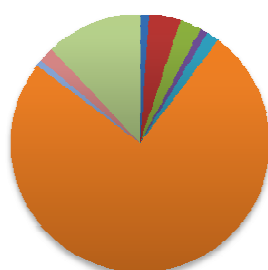
Size	Total HH	
1	155	16%
2	217	22%
3	182	18%
4	144	15%
5	114	12%
6	70	7%
7	41	4%
8	29	3%
9	18	2%
10	7	1%
11	3	0%
12	5	1%
13	1	0%
14	1	0%
16	1	0%
Grand Total	988	100%



### b. By Place of habitual residence

	Malian HH		Nigerien HH		Grand Total	
DELIMANE	8	1%	12	5%	20	2%
FOUKORATAN	29	4%	39	16%	68	7%
GANGALA	20	3%		0%	20	2%
IDELMA	7	1%		0%	7	1%
JANGALA	12	2%		0%	12	1%
MENAKA	554	75%	155	62%	709	72%
TABOUKAR	6	1%	1	0%	7	1%
TINABAW	14	2%	1	0%	15	2%
OTHERS	89	12%	41	16%	130	13%
Grand Total	739	100%	249	100%	988	100%

**Malian HH**



**Nigerien HH**

