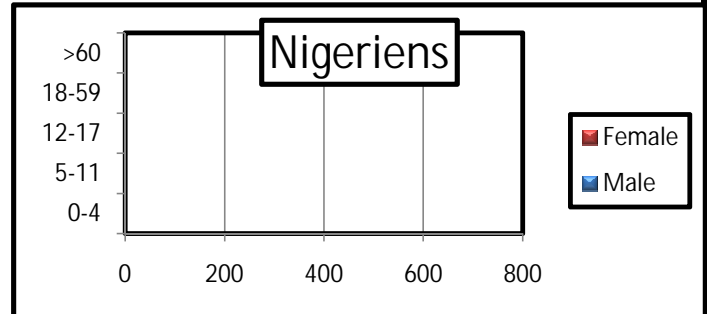
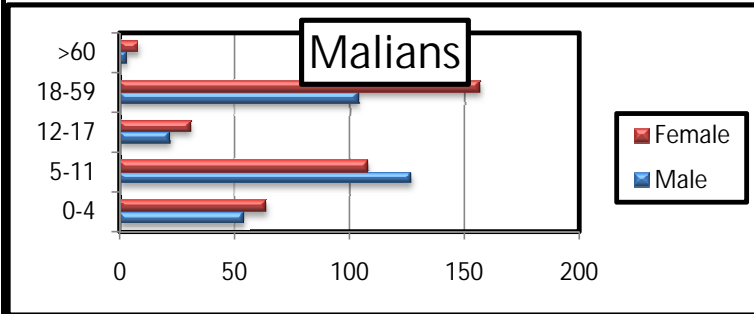


## Profile of the registered population

	Level 1 registration				un-registered			
	Malian		Nigerien	Total	Malian		Nigerien	Total
TINFAGAT	224	678		224	678			

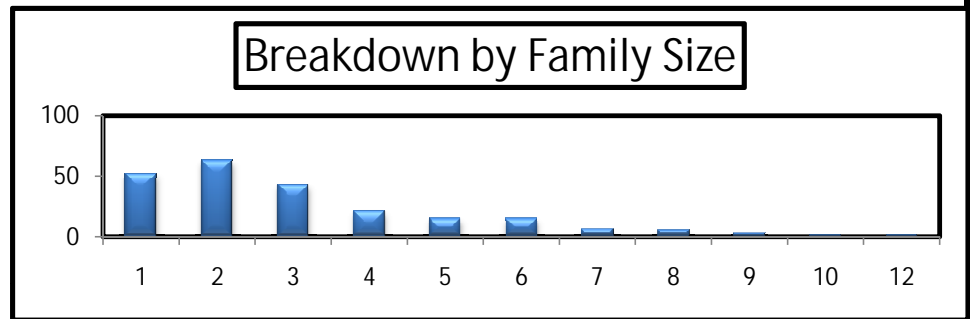
### a. Age and gender Breakdown

		Malian					Nigerien				
		0-4	5-11	12-17	18-59	>60	0-4	5-11	12-17	18-59	>60
TINFAGAT	Male	54	127	22	104	3					
	Female	64	108	31	157	8					
	Total	118	235	53	261	11					



### b. By family size

Size	Total HH	
1	52	23%
2	63	28%
3	43	19%
4	21	9%
5	15	7%
6	15	7%
7	6	3%
8	5	2%
9	2	1%
10	1	0%
12	1	0%
Grand Total	224	100%



### b. By Place of habitual residence

	Malian HH	Nigerien HH	Grand Total
ANSONGO	178		178
TINAHANA	39		39
OTHERS	7		7
Grand Total	224		224

