

50,000 refugees

Population Planning Figures for Niger

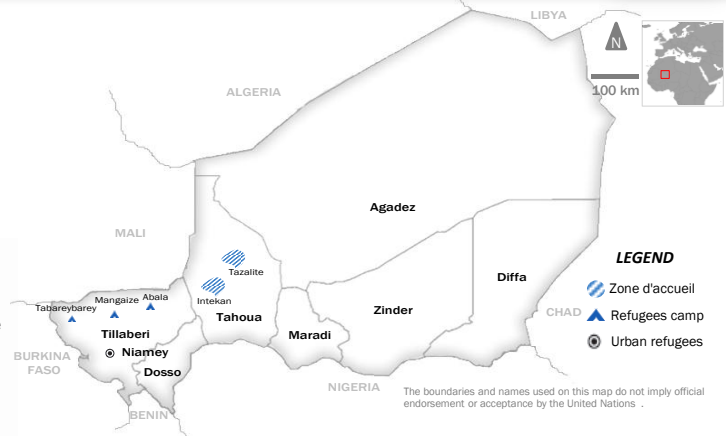
In order to provide means for the Humanitarian communities to plan its activities pending the completion of the countrywide individual registration. This figure is a national estimate.



Operational Highlights

The security situation remained largely calm.

The operation focuses on the following areas: guarantee the security and physical integrity; ensure that all refugees are duly registered; secure access to basic assistance and services; ensure an active participation and close involvement of refugees in programmes and activities that affect their lives; bolster coordination and cooperation with all other stakeholders



Core projects and innovations

DOMESTIC ENERGY

Provide cooking fuel to refugees so that they will no longer sell parts of their food rations in order to purchase firewood for cooking, thus helping both refugee families

ZONE D'ACCUEIL

Keeping nomadic refugees lifestyle by offering them a free spacious to roam around with their betels rather than containing them to a camp.

ONE STOP SHOP / GUICHET UNIQUE

UNHCR and all partners will work from the same location to provide to urban refugees all services and activities relevant to them.

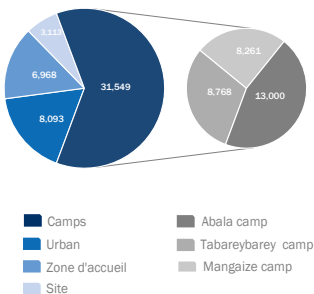
COUPON-BASED FOOD DISTRIBUTION

Improve refugees dignity by offering them the choice of the type, of the timing and the place of receipt of food assistance.

FILETS SOCIAUX / SAFETY NETS

Ensure reintegration into their areas of origin for returnees (Niger Nationals) currently living in refugee camps.

Refugees population by settlement

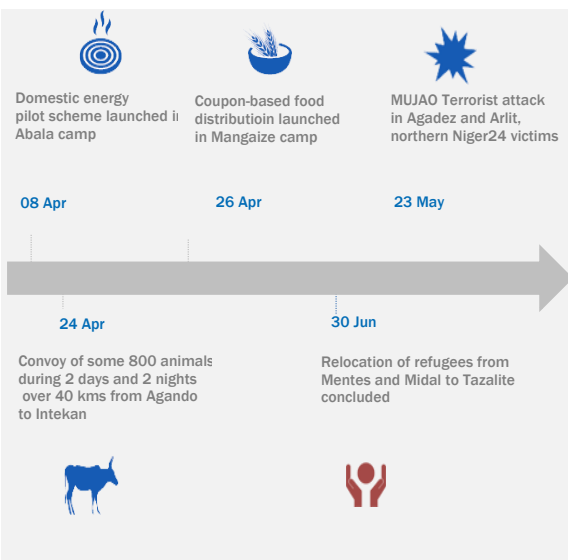


63% of Malian refugees are living in camps

Basic indicators value

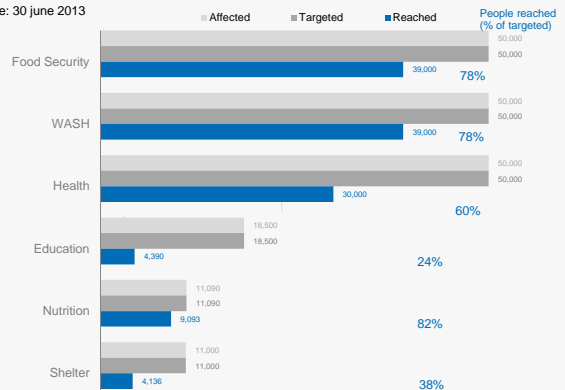
Indicators	Public Health			Nutrition			WASH		Education		Shelter	
	Crude Mortality Rate	Under 5 Mortality Rate	Number of maternal deaths	Global Acute Malnutrition rate (GAM)	Severe Acute Malnutrition rate (SAM)	Wet Feeding frequency	Litres water / person / day	Number of persons / Latrines	Percentage of girls enrolled in Primary School (Grades 1-)	Percentage of boys enrolled in Primary School (Grades 1-)	% of household with adequate dwelling	Average camp area per person
Units	/10,000/day	/10,000/day		%	%	%	Litres		%	%	%	m2
Standard	< 1	< 2		< 10%	< 2%	> 70%	> 15 L	< 20	100%	100%	100%	≥45m2
Mangaize	0.1	0.2	0	3.8	1.3	66	18.94	21	63	45	N/A	87.33
Abala	0.2	0.2	0	2.4	0.6	55	13.17	46	54	44	N/A	146.7
Tabareybarey	0.2	0	0	8.1	3.8	86	18.36	23	49	61	N/A	92.86

This matrix is based on data available on 30 June 2013.



of people in need, targeted and reached by sector (in thousands)

Date: 30 June 2013



- **Food Security:** # of persons receiving 2,100 kcal per day as food ration
- **Wash:** # of people provided by 15Liters/day of potable water
- **Health:** # of persons served by primary health care facility
- **Education:** # of refugee students enrolled in Grades 1-6
- **Nutrition:** # of children under 5 years receiving a supplementation ration
- **Shelter:** % of household with adequate dwelling