

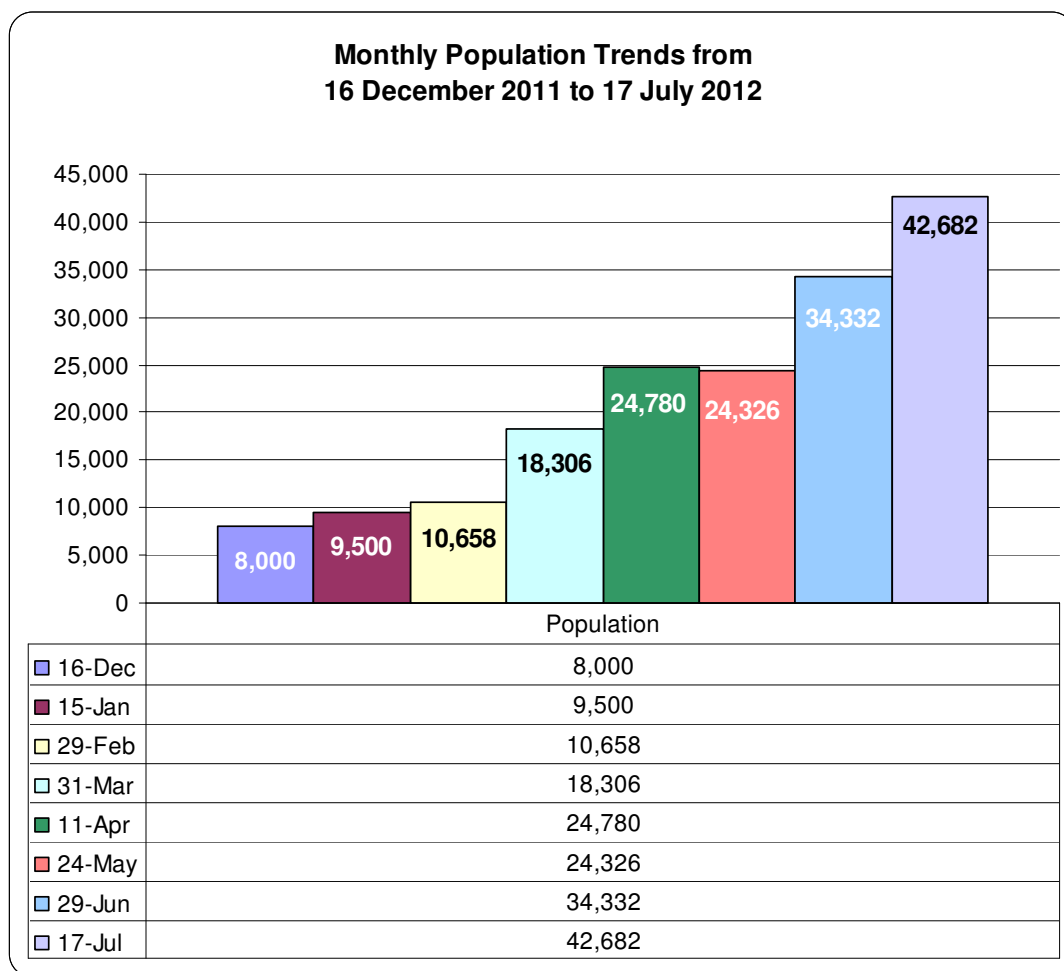


**United Nations Country Team in Turkey  
Daily Situation Report on the Situation Pertaining to Syria**

**July 17, 2012**

It has been reported officially that as of July 17, 2012 total camp population is **42,682** with the arrival of 1,289 and return of 260 persons on July 16-17, 2012.

Total number of registered persons from December 16, 2011 to July 17, 2012 is reflected below:

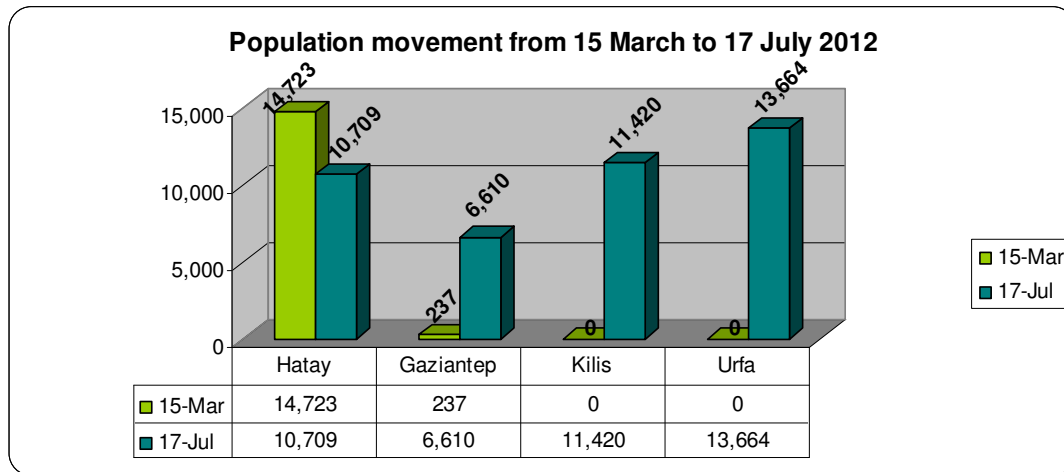


Currently arrivals from Syria are assisted in the border provinces of Hatay, Gaziantep, Kilis and Şanlıurfa.

As of July 17, 2012 the city breakdown in the region is as follows:

- Hatay population\* : 10,709 individuals
- Gaziantep population in Islahiye† : 6,610 individuals
- Kilis population in Öncüpinar container site: 11,420 individuals
- Şanlıurfa population in Ceylanpınar: 13,664 individuals
- In Hospitals: 279 individuals (253 patients+26 companions)

Population movement from Hatay to Gaziantep (Islahiye Camp), Kilis (Öncüpinar Container site) and Şanlıurfa (Ceylanpınar), from March 15<sup>†</sup> to July 17, 2012 is reflected below:



Please find below the map of the region including current **eight camps** in Hatay, Kilis, Gaziantep and Şanlıurfa as of July 17, 2012.



\*\*\* The number mentioned as Hatay is the cumulative population of 4 camps in Altınözü (Tekel), Altınözü (Boynuyöğün), Yayladağı (Tekel) and Hatay Apaydın

## 1. Highlights:

\*: The population of the Kuyubasi/Karbeyaz, Yayladağı 2 (YİBO) and Reyhanlı camps in Hatay is moved to Islahiye camp in Gaziantep and to Öncüpinar container site in Kilis. It has been reported that these empty camps will be kept for while as standby and there is some use of these camps for new arrivals.

† 15 March is the date of first movement took place from Hatay.

- ❖ From May 24 to July 17, 2012 there has been an increase of 75 % in total number of Syrians currently provided temporary protection by Turkish Government.
- ❖ According to Government officials, new sites will be established in the provinces of Şanlıurfa and Gaziantep. UNHCR Site Planner is visiting the new sites, and existing camps, to coordinate with authorities and share technical expertise.
- ❖ Yayladağı-2 (YIBIO) camp was re-opened and the new arrivals of Syrians of Turcoman origin have been accommodated in the camp.