



United Nations Country Team in Turkey
Daily Situation Report on the Situation Pertaining to Syria

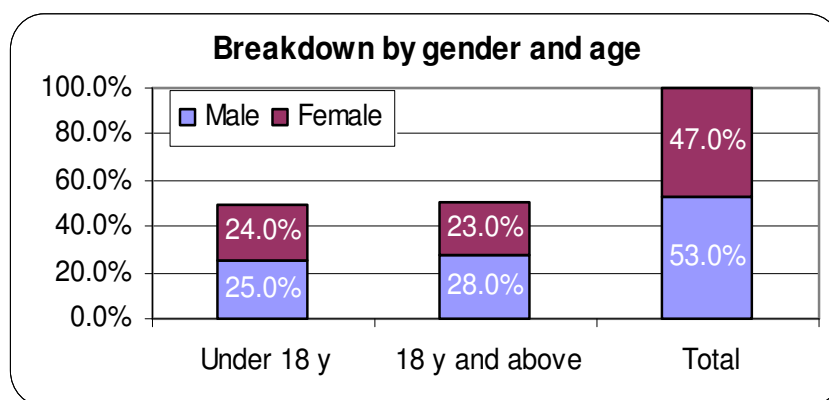
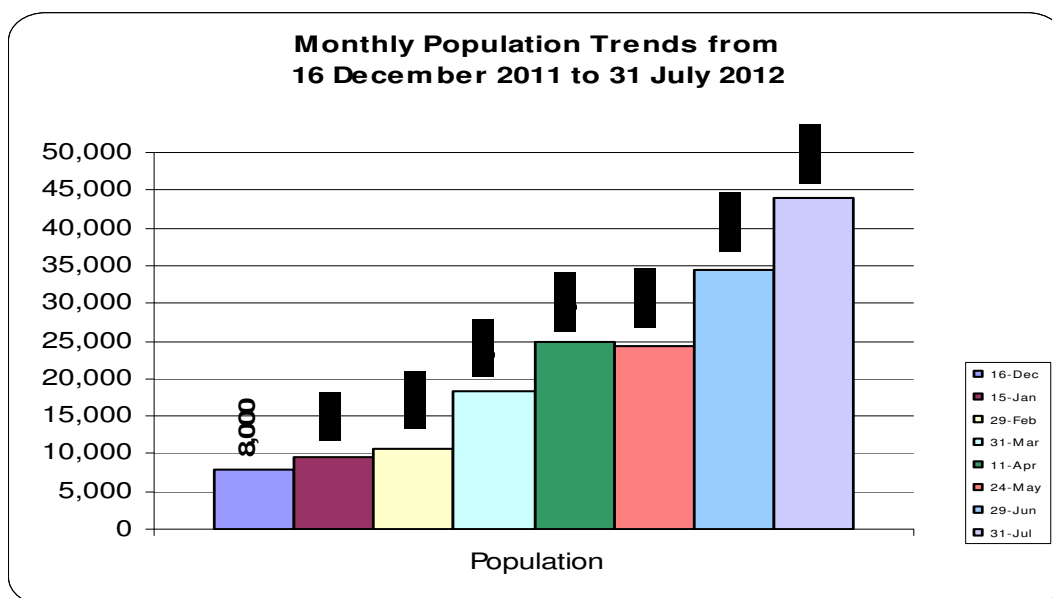
August 4, 2012

There is no new numbers announced by the Turkish Government. As of August 04, 2012, the official total camp population is **44,038** with the arrival of 525 persons and returnees of 532 persons on July 30-31, 2012.

1. Highlights:

- ❖ From May 24 to August 01, 2012 there has been an increase of 81% in the total number of Syrians currently receiving temporary protection from the Turkish Government.
- ❖ Although the official numbers still shows the total number as 44,038, Regional Representative of the Ministry of Foreign Affairs (MFA) informed UNHCR that with the new arrivals of more than 2,000 persons in the last two days (mostly from Aleppo and some from Latakia) the actual number of Syrians under temporary protection in the camps reached to 46,000.
- ❖ Regional Representative of the MFA also confirmed the information regarding the plan to open five additional camps to increase the capacity of the camps up to 100,000.
- ❖ Reportedly one of the five additional camps in Akçakale-Şanlıurfa will be opened on Monday August 06, 2012 to absorb the new arrivals placed in temporary shelter in Ceylanpınar and the second camp in Karkamış/Gaziantep is planned to be ready in three weeks.

Total number of registered persons from December 16, 2011 to July 31, 2012 is reflected below.



Currently arrivals from Syria are assisted in the border provinces of Hatay, Gaziantep, Kilis and Şanlıurfa.

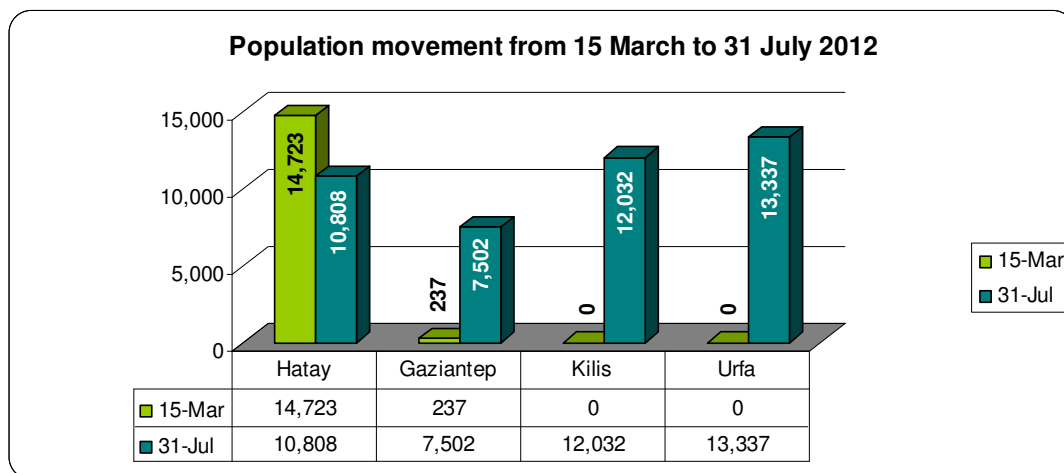
As of July 31, 2012 the city breakdown in the region is as follows:

- Hatay population* : 10,808 individuals
- Gaziantep population in İslahiye† : 7,502 individuals
- Kilis population in Öncüpınar container site: 12,032 individuals
- Şanlıurfa population in Ceylanpınar: 13,337 individuals
- In Hospitals: 359 individuals (320 in hospitals + 39 companions)

Population movement from Hatay to Gaziantep (İslahiye Camp), Kilis (Öncüpınar Container site) and Şanlıurfa (Ceylanpınar), from March 15† to July 31, 2012 is reflected below.

*: The population of the Kuyubaşı/Karbeyaz, Yayladağı 2 (YİBO) and Reyhanlı camps in Hatay is moved to İslahiye camp in Gaziantep and to Öncüpınar container site in Kilis. It has been reported that these empty camps will be kept for while as standby and there is some use of these camps for new arrivals.

† 15 March is the date of first movement took place from Hatay.



Please find below the map of the region including current eight camps in Hatay, Kilis, Gaziantep and Şanlıurfa as of July 31, 2012.



***** The number mentioned as Hatay is the cumulative population of five camps in Altınöz (Tekel), Altınöz (Boynuyoğun), Yayladağı (Tekel, Yayladağı (YIBO-reopened as of July 12, 2012) and Hatay Apaydın**