



United Nations Country Team in Turkey Daily Situation Report on the Situation Pertaining to Syria

Date: September 6, 2012

Latest figures announced by the Government of Turkey on:

September 05, 2012

Official Total Camp Population in Turkey:

78,431

More information on: www.afetacil.gov.tr/

By:

September 06, 2012

Unofficial estimated figure:

Source: MFA Kilis, other sources

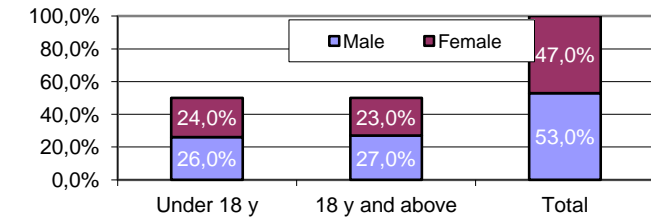
80,000

Highlights

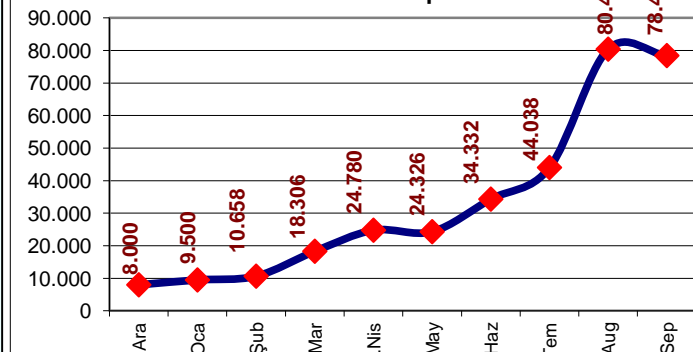
- No new official figures reported by the Government of Turkey since September 5, 2012. While the official figures continued to remain under 80,000 reportedly with the new arrivals of more than one thousand persons and the voluntary return of the very few hundreds unofficial estimation of the local authorities is that about 80,000 Syrians are registered and accommodated and in the camps and temporarily in the schools.
- Reportedly during the 24 hrs of September 5-6, 2012, 1,095 persons of new arrivals were admitted from the borders and placed in the camps and 326 Syrians returned voluntarily during the same period
- It was reported by the various local authorities (MFA-Turkish Red Crescent, AFAD) that there are no new arrivals waiting for processing in Turkey and that this backlog has been cleared. There are estimated to be about 10,000 Syrians across the borders of both Hatay and Kilis, who have not yet admitted to the Turkish side. Reportedly they are provided with basic humanitarian assistance (food, water, medicine) on a daily basis. According to the authorities the border is not closed but because the security checks and also the priority given to the transfer of those in the schools to the camps, the ones across the border are admitted in smaller groups.
- It was reported in the national media on September 5, 2012 that, a fishing boat carrying 61 illegal migrants, mostly women and children on route to Europe sunk after hitting the rocks off the coast of Izmir. Reportedly 49 people including women and children were drowned and 46 people of Iraqi, Palestinian and Syrian and two crew members of Turkish nationals have been rescued.



Breakdown by gender and age



Monthly Population Trends from 16 Dec. 2011 to 05 Sept. 2012



Population by Location 05 Sept. 2012

