

Outbreak Alert and Response

In Week 10, disease outbreak alerts are issued for the following diseases.  
See notes below for calculation of alert thresholds.



Alert!

Acute Jaundice Syndrome

Population trend

Population

Total population

W45

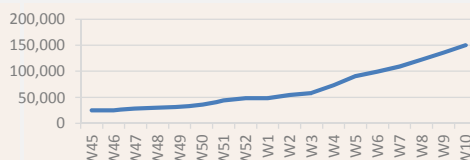
W10

Trend

Notes

Total population

149,956



Diseases with epidemic potential

Disease

% morbidity\*

Incid. / cases\*\*

W45

W10

Trend\*\*\*

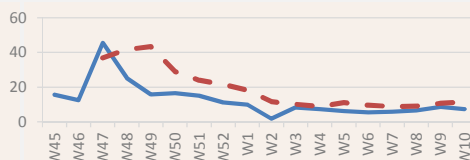
Alert

Notes

1 Watery diarrhoea

9%

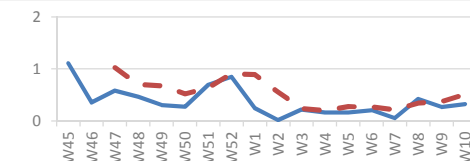
7.4



2 Bloody diarrhoea

0%

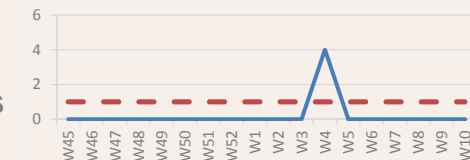
0.3



3 Measles (suspected)

0%

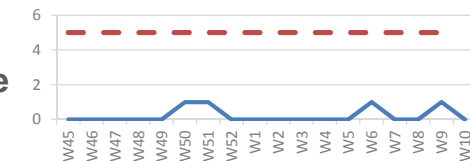
0 cases



4 Meningitis (suspected)

0%

0 case

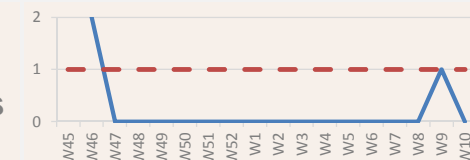


Single case, female aged 18-59, reported by RMS Field Hospital

5 Acute Flaccid Paralysis

0%

0 cases

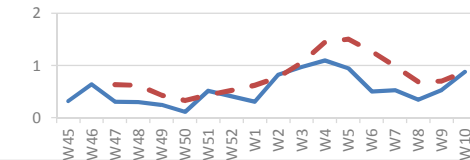


Single case, female aged 5-17, reported by JHAS

6 Acute Jaundice Syndrome

1%

0.9



Graph legend:

- Incidence / number of cases
- - - Alert threshold

Calculation of disease alert thresholds:

- Watery diarrhoea = 1.5 x baseline\*
- Bloody diarrhoea = 1.5 x baseline\*
- Measles\* = 1 case

- Meningitis = 5 cases
- Acute Flaccid Paralysis = 1 case
- Acute Jaundice Syndrome = 1.5 x baseline\*

Footnotes

\* % morbidity refers to proportional morbidity of the disease for the current reporting week

\*\* Incid / cases is the incidence (/1000/week) or number of cases for the current reporting week (incidence is shown unless otherwise indicated)

\*\*\* Trend shows if the incidence or number of cases between the previous and the current reporting week increased (↑), decreased (↓) or remained the same (↔)

\* baseline = average incidence or number of cases over the previous 3 weeks

## Other diseases of public health importance

Disease	% morbidity	Incidence	W45	W10	Trend	Notes
7 Upper Respiratory Tract Infection (URTI)	33%	27.3			↑	
8 Influenza-like illness (ILI)	12%	9.6			↑	
9 Lower Respiratory Tract Infection (LRTI)	9%	7.6			↑	
10 Skin infection	6%	4.8			↑	
11 Eye infection	5%	4.3			↑	
12 Dental Conditions	6%	4.9			↑	
13 Intestinal Worms	1%	1.1			↑	
14 Tuberculosis (suspected)	0%	0.0			↑	
15 Fever of unknown origin	1%	0.8			↑	
16 Sexually Transmitted Infection (STI)	0%	0.2			↑	

UNHCR gratefully acknowledges the support of the following partners:

