

Summary of Discussions on Vulnerability Criteria and Targeting

CASH WORKING GROUP – JORDAN

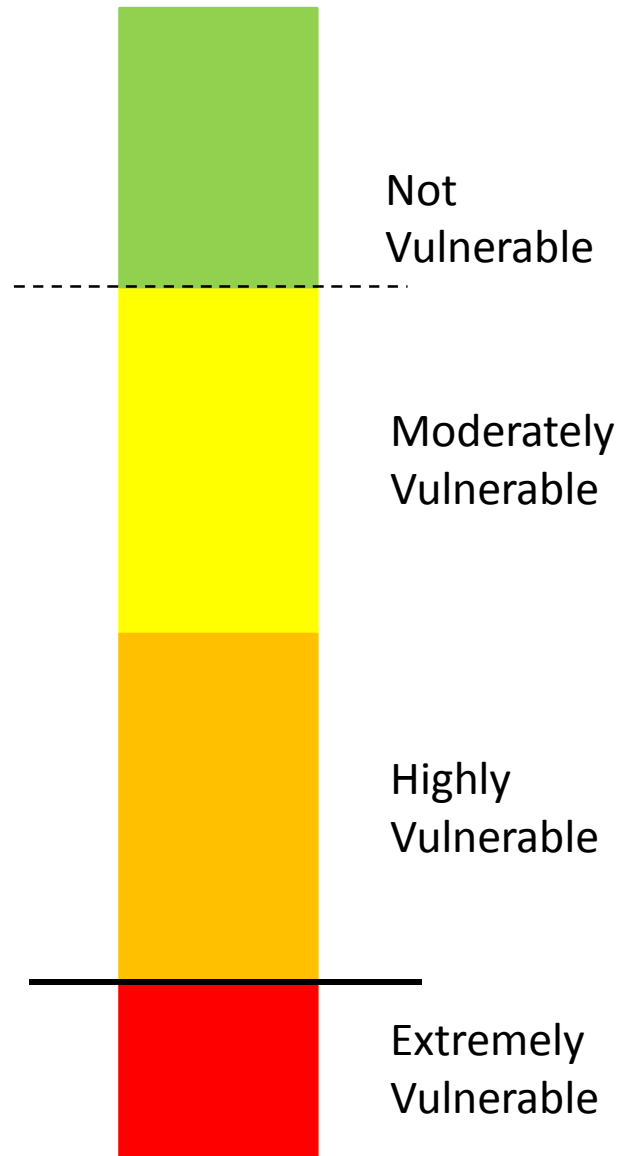
JUNE 2013



Schematic Breakdown

The refugee population can be grouped into several categories of vulnerability, ranging from extremely vulnerable to not vulnerable. The number of intermediate categories (yellow) has to be well defined and agreed upon.

It might be possible to associate this with a scorecard system for regular cash assistance as was standardized in the CWG for one-off cash assistance.



Vulnerability criteria and elements informing targeting

The vulnerability criteria themes are broadly shared by all partners in the CWG; with the exception of health.

Poverty considerations (i.e. the absorption capacity at the family level) is factored in after identification by way of a vulnerability trigger.

Targeting can be based on a combination of at least vulnerability, socio-economic status and location (access)

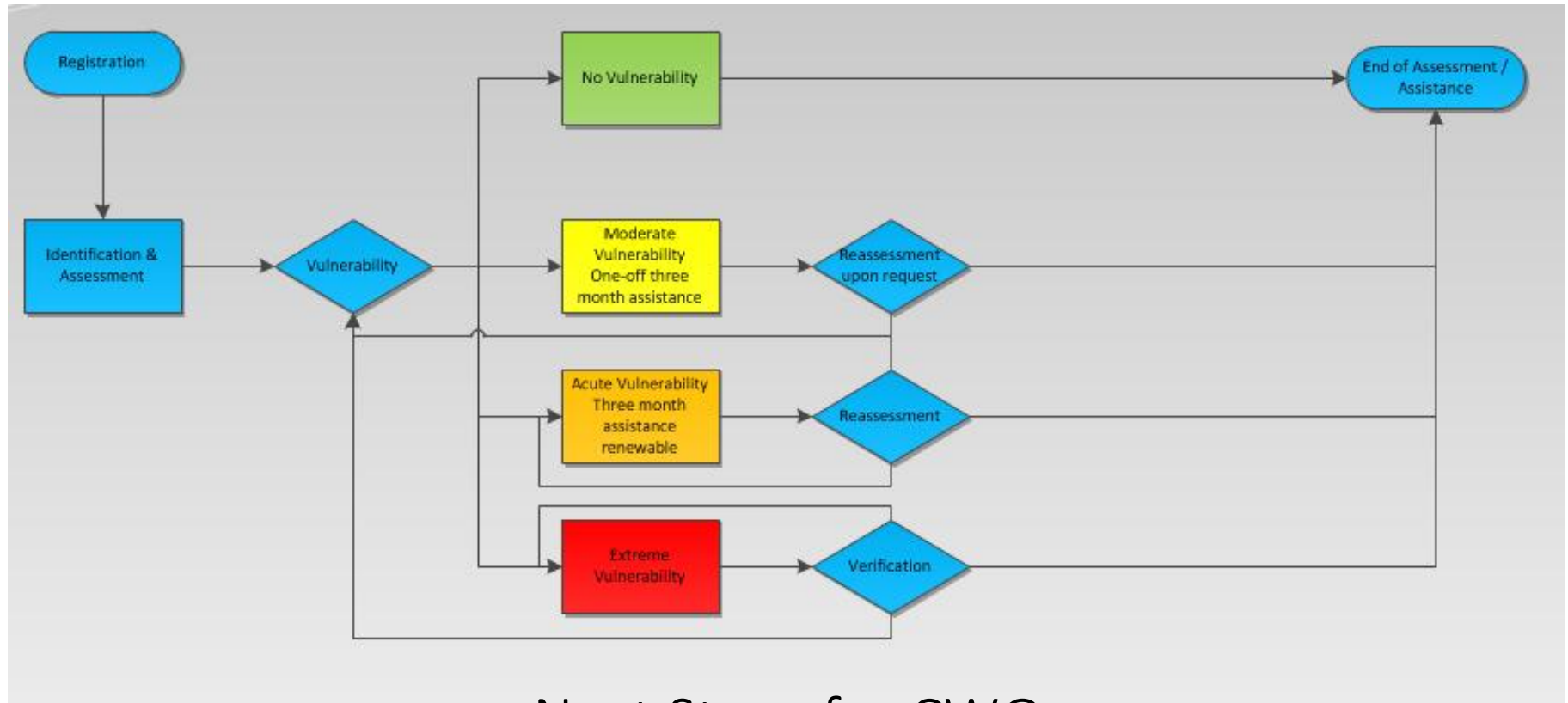
Vulnerability as trigger

- Single Women
- FHH
- UASC
- Children at Risk
- Elderly
- Persons with psychological condition
- Single father
- Large families with children in school
- LGBT
- PWD (stand-alone or mainstreamed)
- Health (not in the CWG as of June 2013)

Response targeted based on:

- 1.) Vulnerability category (permanent, regular, time-bound assistance)
 - 2.) Socio-economic situation of the family
 - 3.) Location (would require tabulation by location)
- ➔ Assistance matrix
- ++ targeted and profile-specific
 - not transparent, high maintenance
 - unintended consequence in terms of relocation of families to maximize assistance

One option for CTPs/CBIs based on targeting



Next Steps for CWG

- Update vulnerability criteria document
- Define dividing line between one-off cash assistance and regular cash assistance (especially with moderately vulnerable populations in mind)
- Elaborate on balance between well-targeted and practical/cost-effective assistance
- Define basic assistance unit (family, case, household, other)