

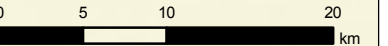
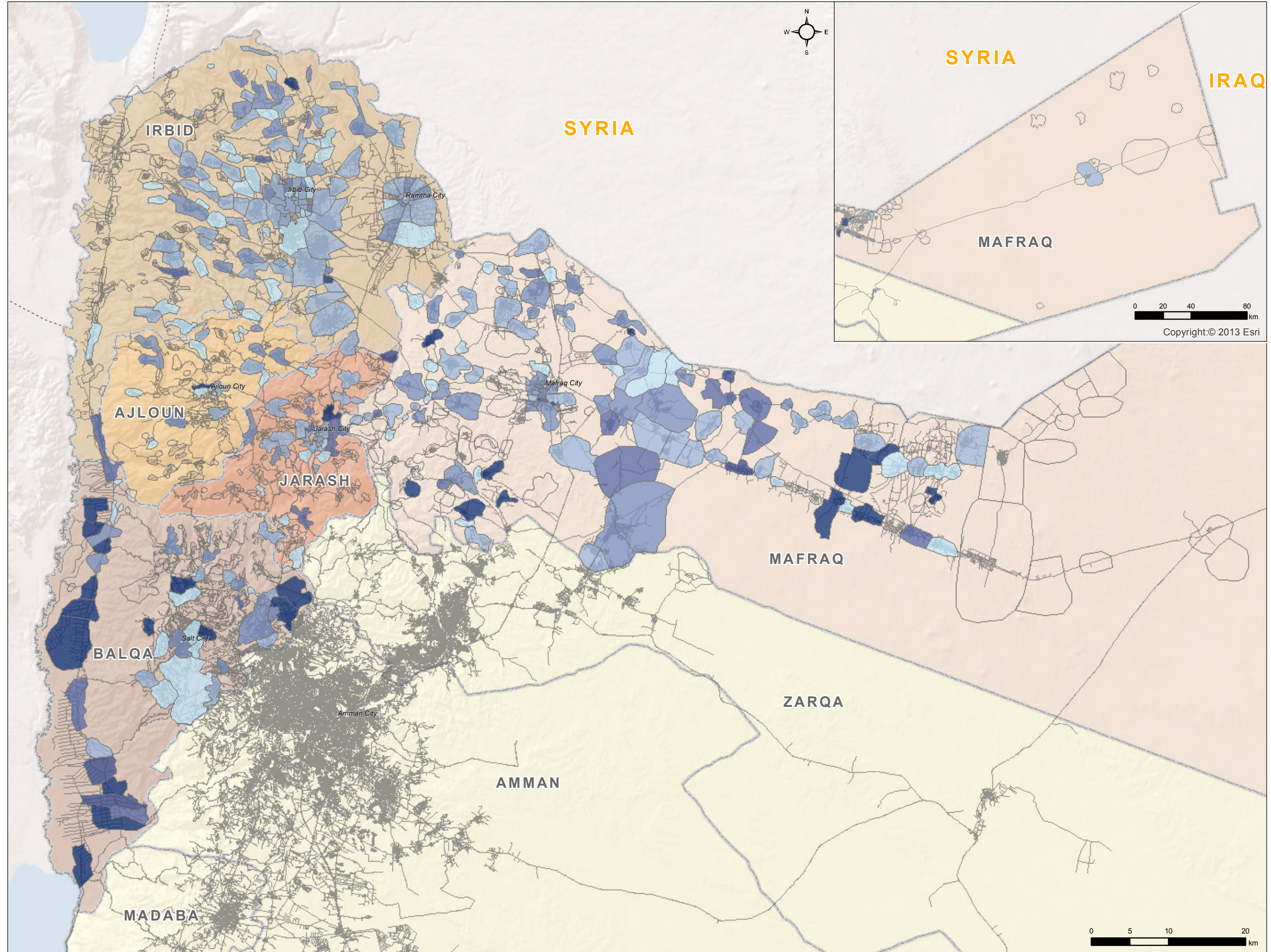
Copyright: © 2013 Esri

### Number of days

- No Syrians/Not Specified
- < 30 days
- 30 - 60 days
- 60 - 90 days
- 90 - 120 days
- 120 - 150 days
- > 150 days

### Governorates

- Rest of Jordan
- Assessed Govenorates**
- Ma'raq
- Jarash
- Irbid
- Balqa
- Ajloon



**Data Sources:**  
 Basic Service Units data:  
 REACH Key Informant/Household Assessment  
 Administrative divisions, roads and city names data:  
 OSM  
 Projection: WGS 1984 UTM Zone 37N  
 File:  
 JOR\_NorthJordan\_Arrival\_A3\_10APR2013  
 Contact: reach.mapping@impact-initiatives.org

The information presented cannot be guaranteed as an exhaustive picture of the situation as it is not based on a census of the refugee population. The predominant types displayed here should be interpreted with caution as their interpretation largely depends on an unknown population size at the "Basic Service Unit" level. The present map reflects a snapshot at a given time and as perceived by the refugee community. Thus, the data from this assessment can be used to discover characteristic patterns but is not legally valid for case based decisions.

**REACH** Informing more effective humanitarian action  
 An Initiative of ACTED, IMPACT Initiatives and UNOSAT