



**Inter Agency Meeting – 13 December 2013**



# AGENDA

1. General updates
2. NFI and winterization
3. The situation and needs of Lebanese returnees from Syria (IOM)
4. RRP6 launch
5. Activity Info
6. AOB



# AGENDA

1. **General updates**
2. NFI and winterization
3. The situation and needs of Lebanese returnees from Syria (IOM)
4. RRP6 launch
5. Activity Info
6. AOB


Thu 12 Dec. 2013











# Syrian Refugees in Lebanon

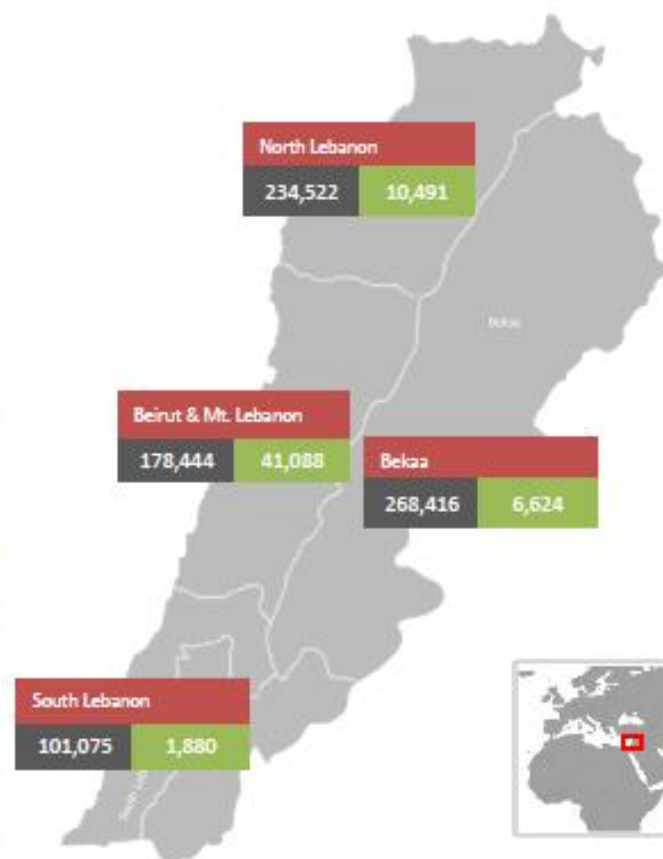
## Daily Statistics

Registered on 12 Dec. 2013

Beirut & Mt Leb	744
North	547
Bekaa	502
South	256
<b>Total</b>	<b>2,049</b>

	<b>842,540</b>	<b>Total</b>
	<b>782,457</b>	<b>Registered</b>
	<b>60,083</b>	<b>Awaiting</b>

Governorate		Registered	Awaiting	Average waiting period	Total
Beirut & Mt Lebanon	Persons 	178,444	41,088	41 days	219,532
	Households 	43,495	10,547		54,042
North	Persons 	234,522	10,491	21 days	245,013
	Households 	57,464	2,767		60,231
Bekaa	Persons 	268,416	6,624	14 days	275,040
	Households 	55,942	1,385		57,327
South	Persons 	101,075	1,880	6 days	102,955
	Households 	22,030	488		22,518
<b>Total Lebanon</b>	Persons 	782,457	60,083	33 days	842,540
	Households 	178,931	15,187		194,118





# PROTECTION-Aarsal

- Statistics:
  - 35,000 (host community)
  - 21,500 (refugees registered with UNHCR as of 10 Dec)
  - 20,000 plus (latest influx since 15 Nov)
  - Total: 76,500 persons
- Influx has significantly slowed (to 10 families/day)
- Current average waiting time for registration: 14 days (from 38 in Oct)
- Main needs: shelter and winterisation assistance
- Protection responses:
  - ✓ Service mapping, referral mechanisms and training to front-line staff
  - ✓ Collective shelters with partitions to increase privacy



# PROTECTION-Borders

- For refugees registered between Jan and Oct 2013 – apparent downward trend in the no. of monthly new arrivals
- No. of new appointments for registration – reduction in the number of appointments requested over the last 3 months (Sep -20,000, Oct – 18,000, Nov -14,000)
- Current average waiting time from arrival to registration: 33 days.
- Goal: reduction to 29 days in the coming months



## Borders - continued

- Documentation and legal or irregular entry/through unofficial border points:
  - ✓ For refugees with documentation, 89 % enter legally and 11 % in an irregular manner/through unofficial border points
  - ✓ For refugees without documentation, 4 % entered legally and 96% in an irregular manner/through unofficial border points
- Renewal of refugee attestations: UNHCR envisages renewal of 2/3 of those registered HHs/individuals and which will have expired before 30 June 2014 over a 12-months period
- From July 2013, refugee attestations are issued for a 2-year period.



# AGENDA

1. General updates
- 2. NFI and winterization**
3. The situation and needs of Lebanese returnees from Syria (IOM)
4. RRP6 launch
5. Activity Info
6. AOB



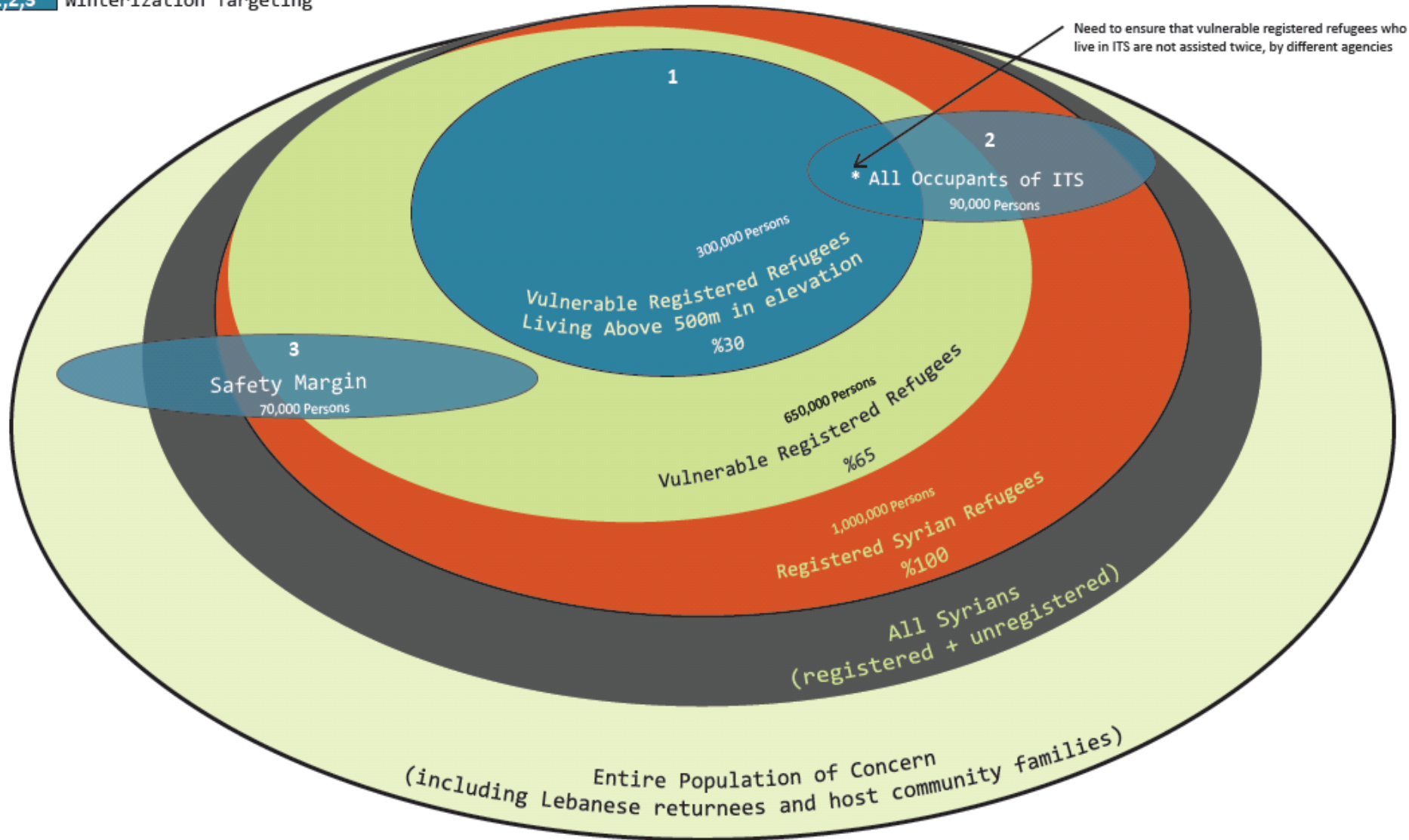
# WINTERIZATION



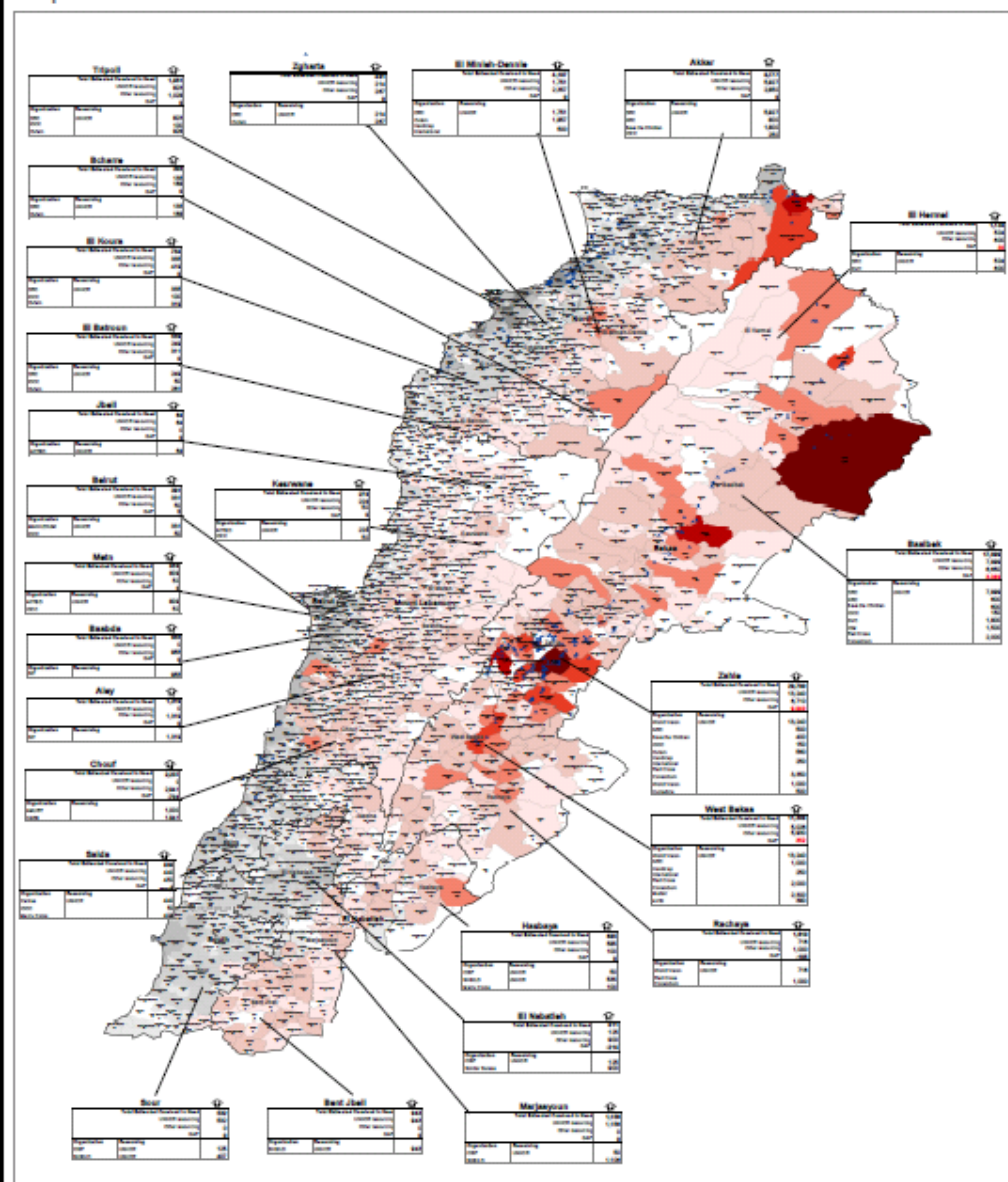
Tue 17 December 2013

# NFI Winterization Targeting Approach

1,2,3 Winterization Targeting







## Targeting: Altitude + ITS

### Vulnerable registered refugees (found through VASyR) living at higher altitudes:

- Take current population above 500m in elevation (255,476)
- Allow for growth between mid-Aug - end Dec (x 1.75)
- Apply VASyR criteria to ProGres (69%) ⇒ **291,000 / 58,200 HH**

### Any refugee (registered or unregistered) in the worst shelters

- Informal Tented Settlements (ITS) & collective shelters
- Estimated max. pop. 100,000 by end Dec
- Exclude those who receive the package because vulnerable registered living in ITS >500m: 8,000 ⇒ **92,000 / 18,400 HH**

### Persons with Special Needs & other special cases

- Allow all areas a contingency of 10% = **69,500 / 13,900 HH**

Total caseload is therefore **58,200 + 18,400 + 13,900 = 90,500 HH**

Coordinating Partner (with its own source of funding)	No. of Heating Stoves issued to date	No. of High Thermal Blankets issued to date	No. of Quilts issued issued to date	No. of Medium Thermal Blankets issued to date	No. of HHs issued with Cards or monthly fuel vouchers to date
IOM	440	0	0	9,448	440
Oxfam	0	0	0	0	0
SIF	0	6,721	0	0	1,498
CARE	824	5,715	1,143	0	1,158
NRC	800	4,000	0	0	1,092
Handicap International	0	0	0	2,765	550
Medair	0	0	2,145	0	429
Humedica	0	0	0	0	0
AMURT	315	955	0	0	316
Mercy Corps	0	0	0	0	0
IRC	0	0	0	0	0
IOCC	0	0	0	0	0
GVC	317	775	105	1,959	0
Concern	0	0	0	0	0
Red Cross Consortium	0	0	0	0	0
Solidar Suisse (own funding)	0	0	0	0	0
UNRWA	4,632	15,825	0	0	4,632
	<b>7,883</b>	<b>34,893</b>	<b>3,424</b>	<b>14,215</b>	<b>11,107</b>

UNHCR Implementing Partner (IP)	No. of Heating Stoves issued to date	No. of High Thermal Blankets issued to date	No. of Quilts issued issued to date	No. of Medium Thermal Blankets issued to date	No. of HHs issued with Cards or monthly fuel vouchers to date	No of HHs "winterized" (excl. DRC caseload given CSC cards instead of Hygiene Kits)
DRC	5,107	3,938	50,102	60,300	42,378	18,073
World Vision	0	90,296	0	35,551	22,288	22,288
Save the Children	0	19,163	0	1,700	4,487	4,487
SHEILD	0	7,382	0	0	1,690	1,690
ACTED	0	5,794	0	0	1,076	1,076
Solidar Suisse	0	1,496	0	0	303	303
Makhzoumi Foundation	0	1,357	0	0	266	266
CISP	327	845	0	0	0	0
Caritas	0	3,396	0	0	302	302
UNHCR direct distr.	150	2,800	0	0	0	0
	<b>5,584</b>	<b>136,467</b>	<b>50,102</b>	<b>97,551</b>	<b>72,790</b>	<b>48,485</b>

<b>IPs + CPs</b>	<b>13,467</b>	<b>171,360</b>	<b>53,526</b>	<b>111,766</b>	<b>83,897</b>	<b>59,592</b>
No. of Indivs supported	63,335	171,360	53,526	55,883	419,485	297,960
No. of HHs supported	10,644	280,769			83,897	59,592



# NFI Achievements So Far

1. 13,467 HHs have received stoves
2. 280,769 indivs have received blankets or quilts
3. 84,000 CSC cards (or voucher equivalent) distributed
4. Of which 60,000 are for winterization:
  - Reports from 9 UNHCR IPs to date: 48,485 HH (93%)
  - Reports from 8 CPs to date: 11,107 HH (46%)
  - **Total reported so far: 59,592 HH (78% of Dec target)**



# NFI Plan vs. Reality

1. UNHCR est. caseload for entire winter: 63,700 HH
2. UNHCR est. caseload by end-Dec: 52,000 HH
3. Reports from UNHCR IPs to date: 48,485 HH (93%)
4. CP est. caseload for entire winter: 29,500 HH
5. CP est. caseload by end-Dec: 24,000 HH
6. Reports from CPs to date: 11,107 HH (46%)
7. **IOM, SIF, Care, NRC, HI, Medair, AMURT, GVC & UNRWA reported so far**



# Lessons Learned

1. VASyR targeting was not necessarily appropriate for winterization ⇒ take a simpler, easier to understand, more blanket approach, & inform people beforehand
2. Registered caseload split between 2 IPs in some places (i.e. the complication of the registered living in ITS) ⇒ Division of responsibilities to be clear (e.g. UNHCR to cover all registered, regardless of where they live)
3. Slow start by everybody, but esp. CPs ⇒ 2014 winter planning should start in Apr, implementation in Oct
4. CSC cards distributed ≠ cash spent ⇒ need to analyse the Bank's data on cash withdrawn





# Challenges

1. Reporting, especially by some cooperating partners, has been poor ⇒ Ask donors to prompt them
2. The vulnerable registered below 500m were also in need ⇒ Use the 25,000 cards distributed in North in place of hygiene kits for a one-off transfer of \$100
3. Occupants of ITS were all targeted irrespective of registration/vulnerability, but maybe not yet assisted ⇒ Use 11 SDCs to distribute 550 additional stoves
4. 25% of those excluded now need to be 're-included' following verification of VASyR ⇒ Give them support retrospectively but a big data management challenge



# Next Steps

1. Data management is the biggest challenge – almost unable to cope with the new cash transfer system ⇒ Massive investment urgently needed in a system for card & cash management, that goes beyond UNHCR's own prog. needs, to cover all registered + unregistered
2. The Aarsal influx + Winter Storm Alex experience ⇒ Contingency planning workshop based around a mass influx into Shebaa during a winter storm !
3. Joint M&E for winterization ⇒ Pre-distribution survey conducted, post-distribution monitoring planned, & external evaluation (in Feb) will analyze gaps, etc.



# AGENDA

1. General updates
2. NFI and winterization
3. **The situation and needs of Lebanese returnees from Syria (IOM)**
4. RRP6 launch
5. Activity Info
6. AOB

# Situation and Needs of Lebanese Returnees from Syria



الجمهورية اللبنانية  
رئاسة مجلس الوزراء  
الهيئة العليا للإغاثة



# Outline

- Methodology
- Returnee location
- Demographics
- Migration
- Living Conditions
- Needs and Assistance Received
- Economic Status
- Recommendations

# Methodology

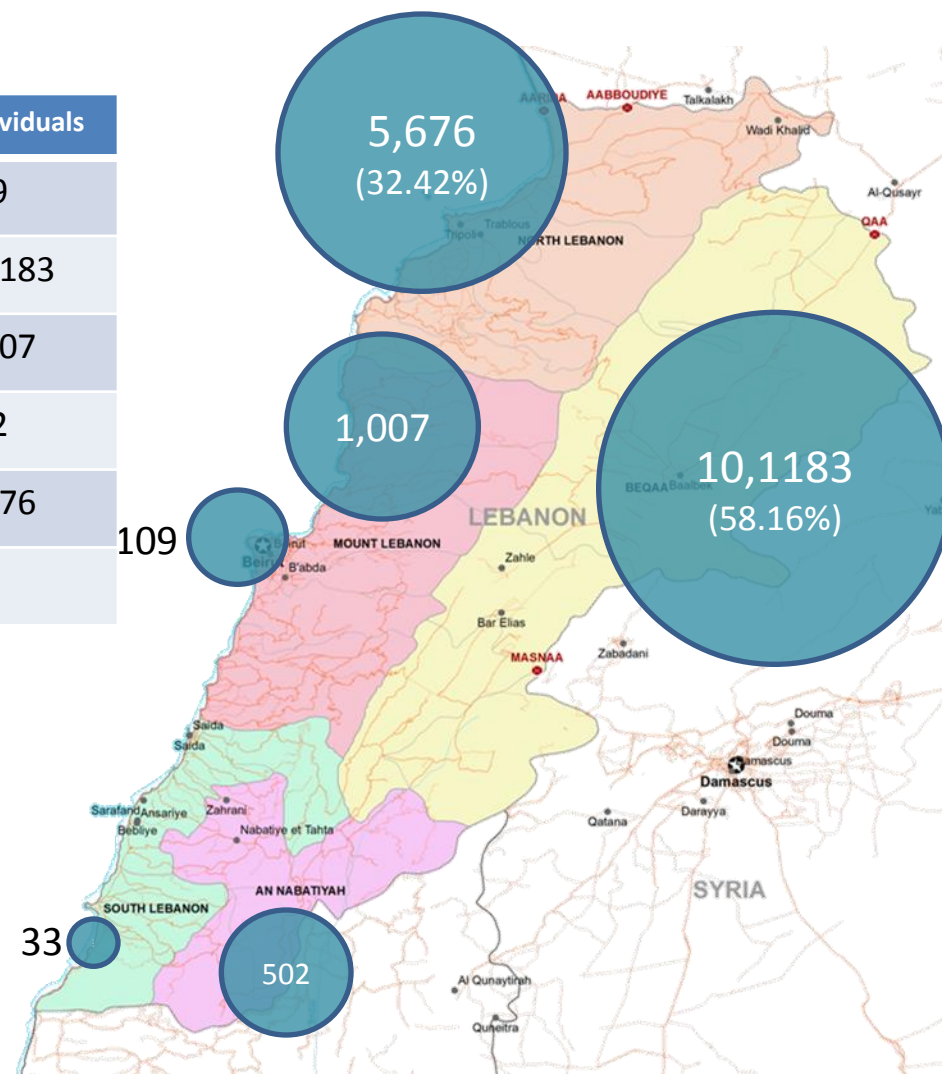
- **Pre-registration:**
  - Rapid assessment: around 6, 000 families (approximately 29, 000 individuals)
  - Capacity-building workshop: data collection and entry
- **Registration and profiling:**
  - Conducted across the country in coordination with local municipalities and mukhtars
  - Preceded by municipal information campaigns two weeks ahead

# Returnee Location

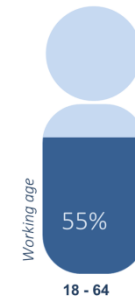
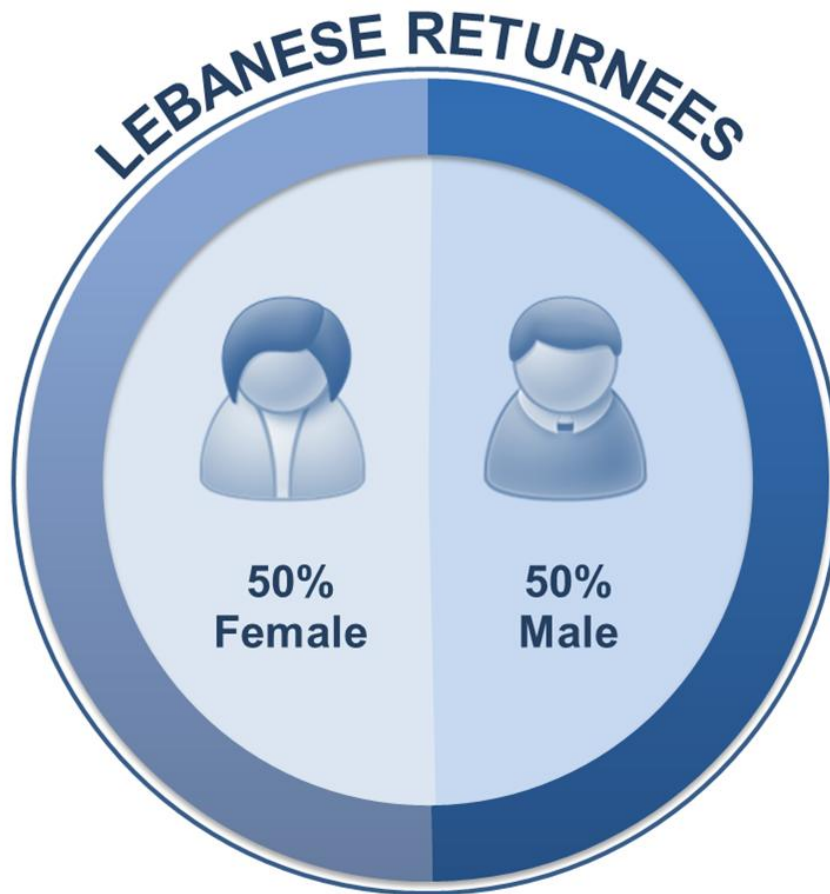
Total individuals: 17,510

Governorate	Households	Individuals
Beirut	20	109
Bekaa	1,991	10,183
Mount Lebanon	212	1,007
Nabatiyeh	109	502
North Lebanon	867	5,676
South Lebanon	7	33

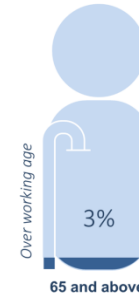
Qaza	Individuals
Aakar	5,152
Baalbek	5,048
Hermel	2,976
Zahle	1,063
Bekaa Ouest	868



# Demographics



**408 households**  
headed by single individual  
with children



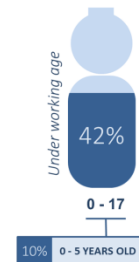
**40% with special  
needs or vulnerabilities**

1,584 with chronic illness

302 with physical disability

55 with mental disability

97 pregnant or breastfeeding





# Migration

80% had been in Syria before year 2000; 65% for over 20yrs

Reasons for migration: economic or social reasons

Returns (families): 2011: 1,096 | 2012: 1,315 | 2013: 613

## HOMS GOVERNORATE

1,901 HHs (59%)

## RURAL DAMASCUS

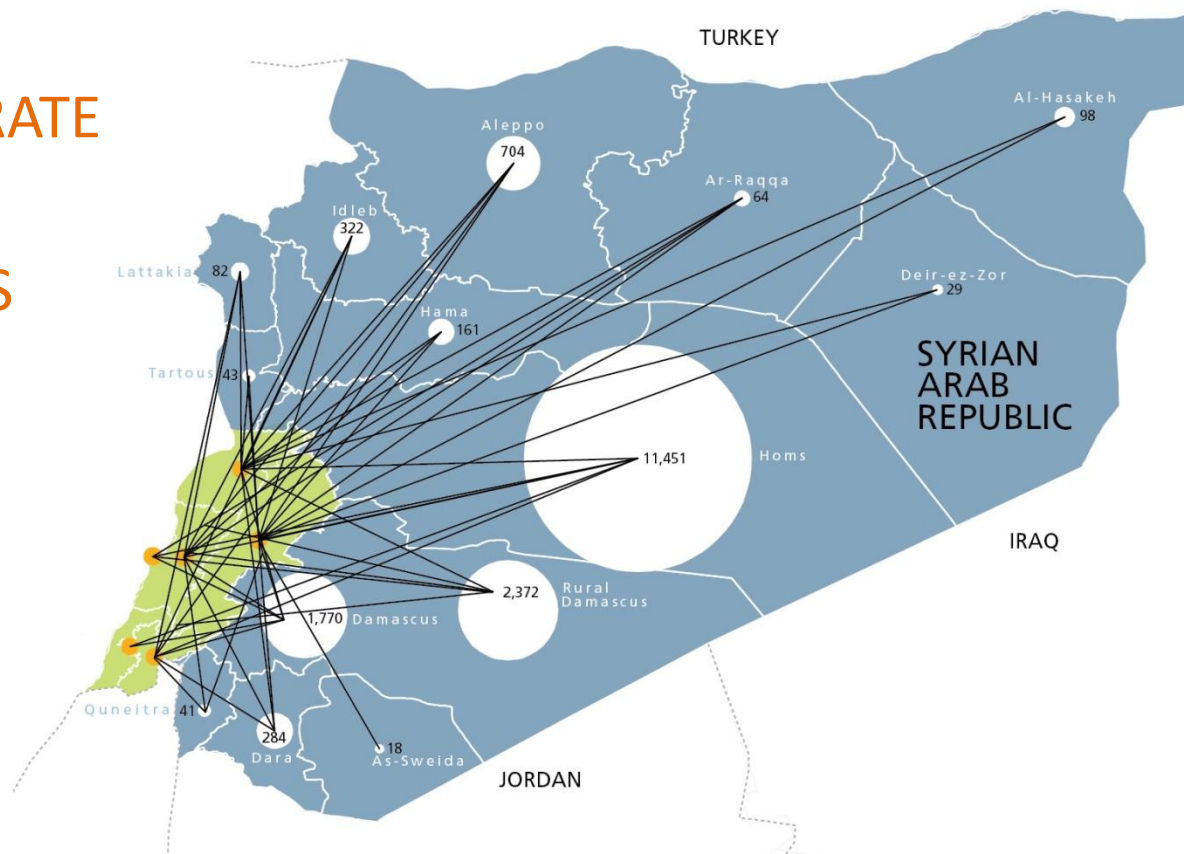
522 HHs

## DAMASCUS

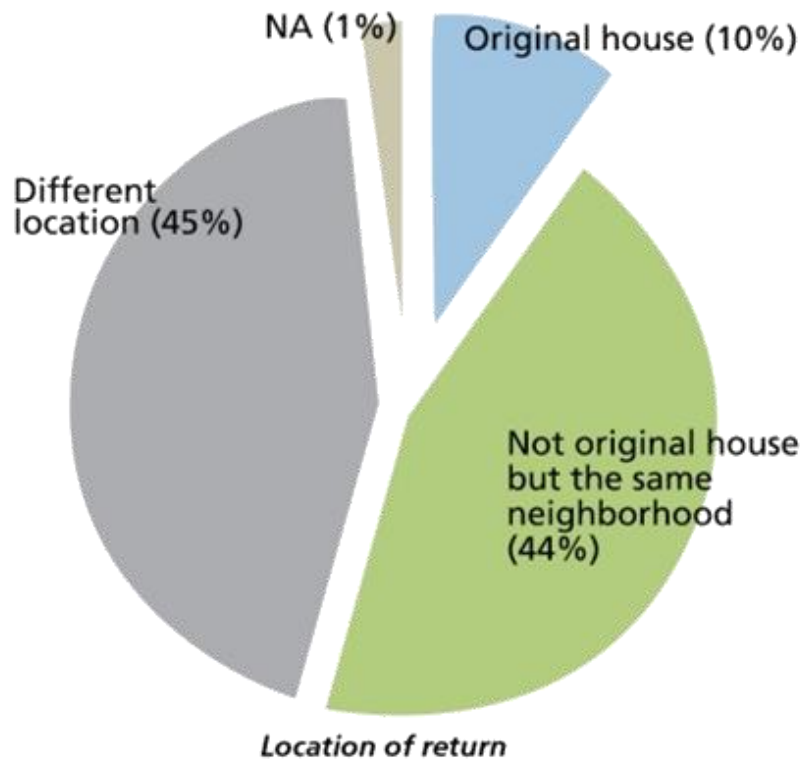
388 HHs

## ALEPPO

147 HHs



# Migration



## Intentions

75%

waiting on one or several factors  
before making a decision

10%

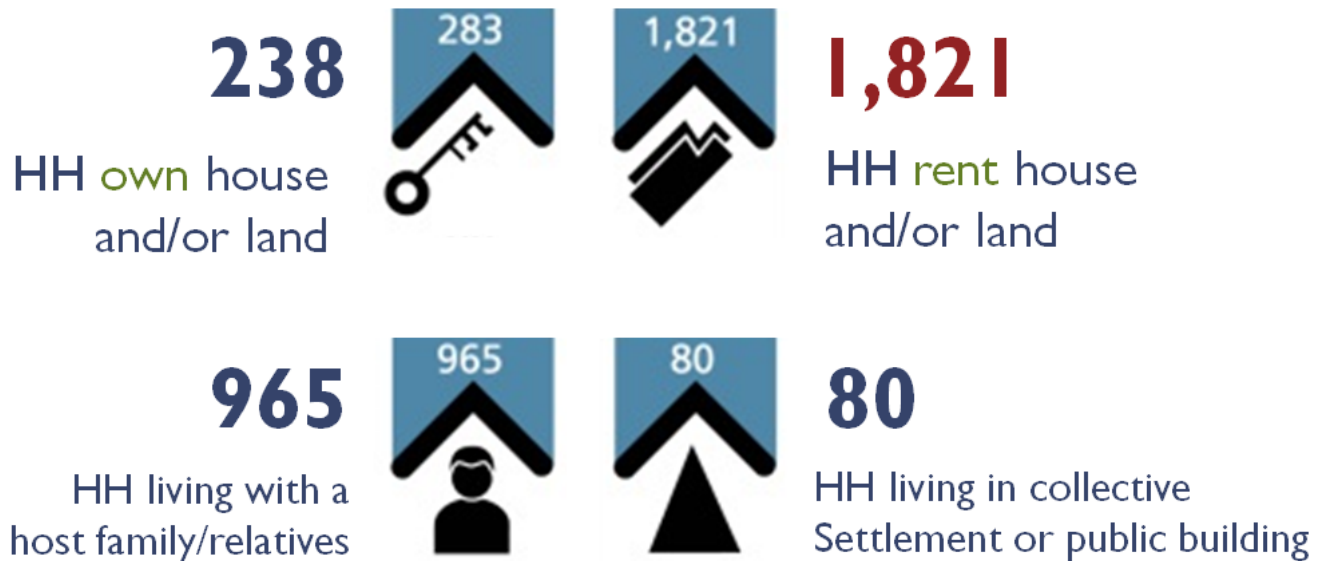
intended to integrate locally

9%

return to Syria

# Living Conditions

## Shelter Condition & Ownership Status

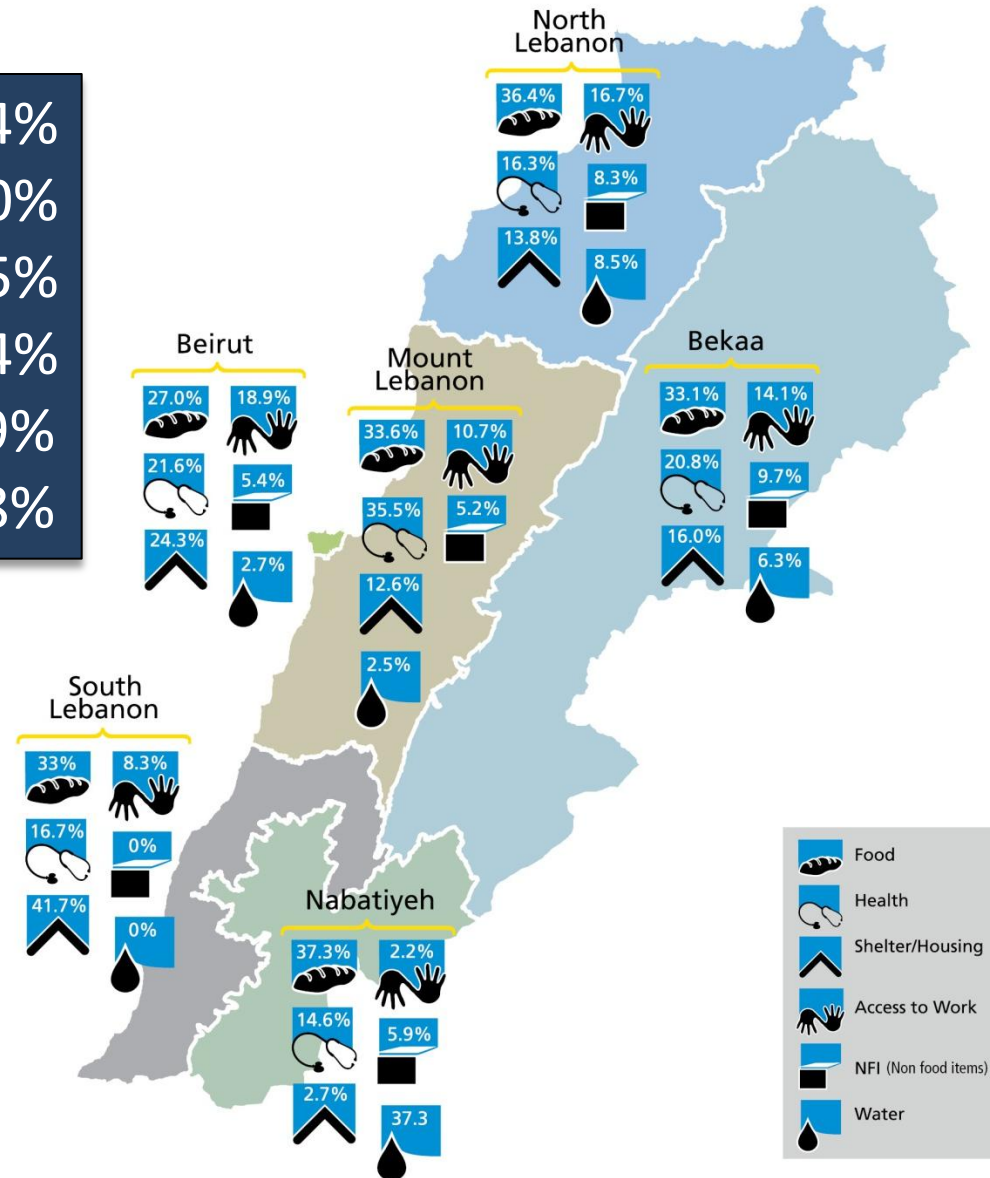


# Priority Needs

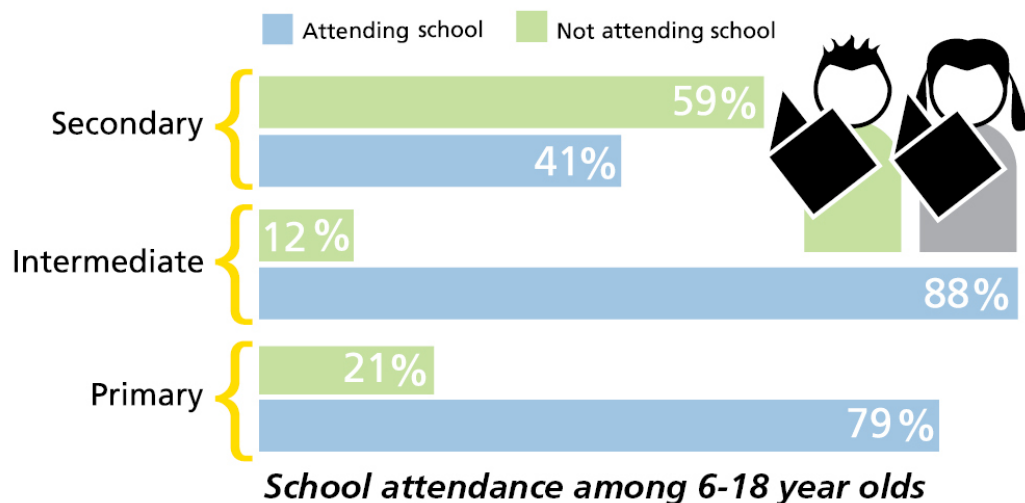
Food	34%
Health	20%
Shelter & Housing	15%
Access to Work	14%
Non-Food Items	9%
Water	8%

84% said they had not received assistance.

Among the rest most had received food and NFIs, while a few had received cash/vouchers.



# Education



	HH
Distance From Home	12
Financial Reasons	605
Curriculum Incompatible	36
School is full	4
Other	37

*Reasons for not attending school*

# Economic Status

## Employment and Unemployment

31% with jobs

2,804 seasonal or day-to-day work

195 with regular or full-time job

-----

52% unskilled labor

681 individuals working in agriculture

**6,623 individuals**

(18-64 years old)

**UNEMPLOYED**



**Female**

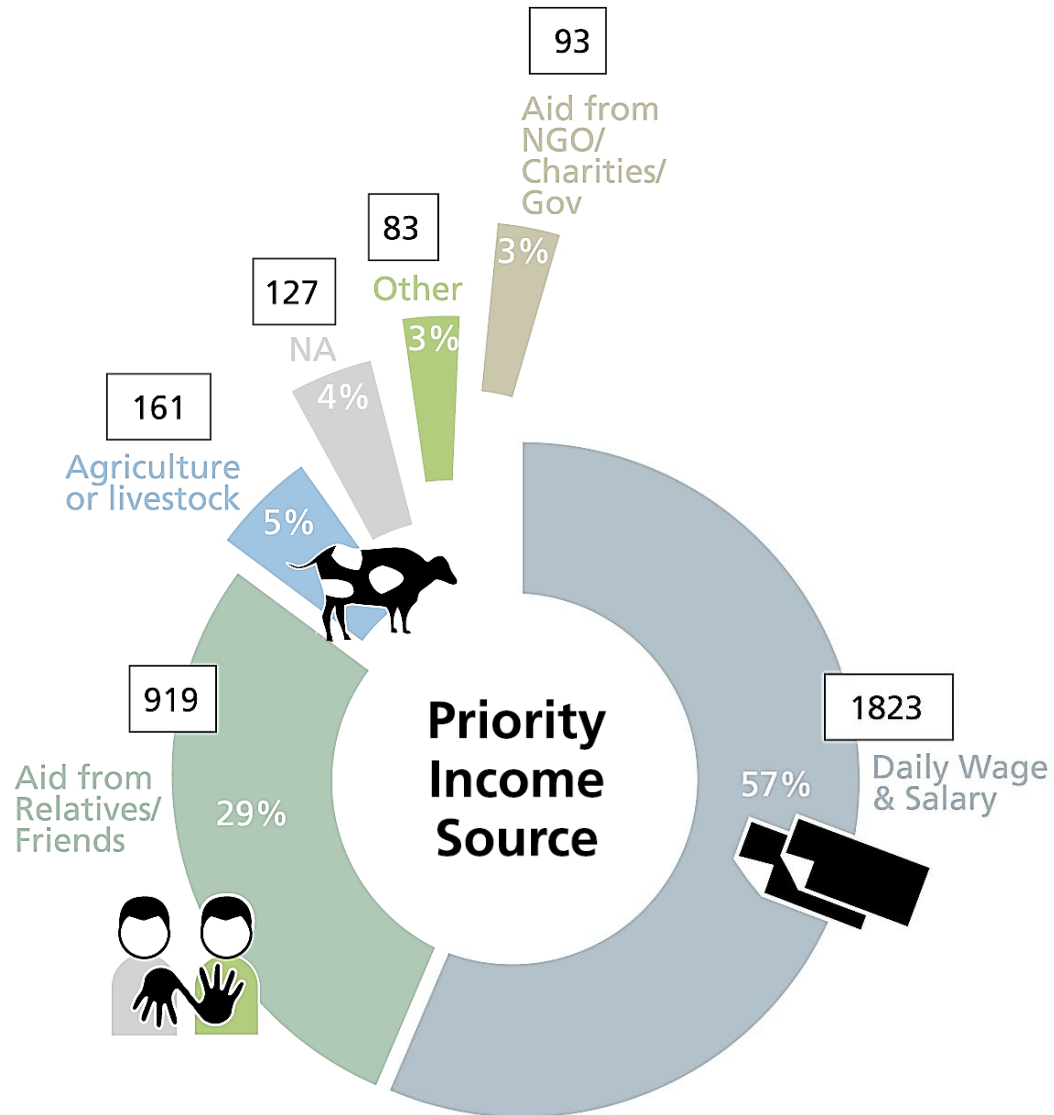
92%



**Male**

44%

# Economic Status



# Recommendations

- Meet the urgent needs of vulnerable Lebanese returnees in the immediate/near term:
  - Food support; essential NFIs; rental subsidies; winterization. Health and livelihoods support.
- Improve coordination
  - Establish a mechanism to ensure gaps are covered and duplication is avoided.
- Extend registration
  - Better coverage, further detail.





# AGENDA

1. General updates
2. NFI and winterization
3. The situation and needs of Lebanese returnees from Syria (IOM)
- 4. RRP6 launch**
5. Activity Info
6. AOB

# RRP6 Launch

- Geneva – Monday 16<sup>th</sup> at 11 am (GVA time) with HC Guterres and ERC Amos
- Lebanon - Monday 16<sup>th</sup> at 12 noon in Grand Serail by Prime Minister
- Government officials, UN, NGOs, diplomats, donors and media invited
- Three parts:
  - **Part A (all participants) (40 minutes)**
    - ✓ Prime Minister formally launch RRP6
    - ✓ Testimonies by:
      - o Refugee representative (North)
      - o Host community representative (Beka'a)
      - o Local NGO worker in WASH (Beka'a)
    - ✓ Presentation of RRP6 content of the RRP

# RRP6 Launch

- **Part B – closed session only for donors/diplomats (15 minutes)**
  - Q&A with:
    - o MoSA , HC/RC , UNHCR , WFP , UNICEF , UNRWA , WHO, LHIF Representative (int'l NGOs) , Amel Representative (national NGOs)
- **Part C - for media (30min)**
  - Same panel as Part B plus a donor representative

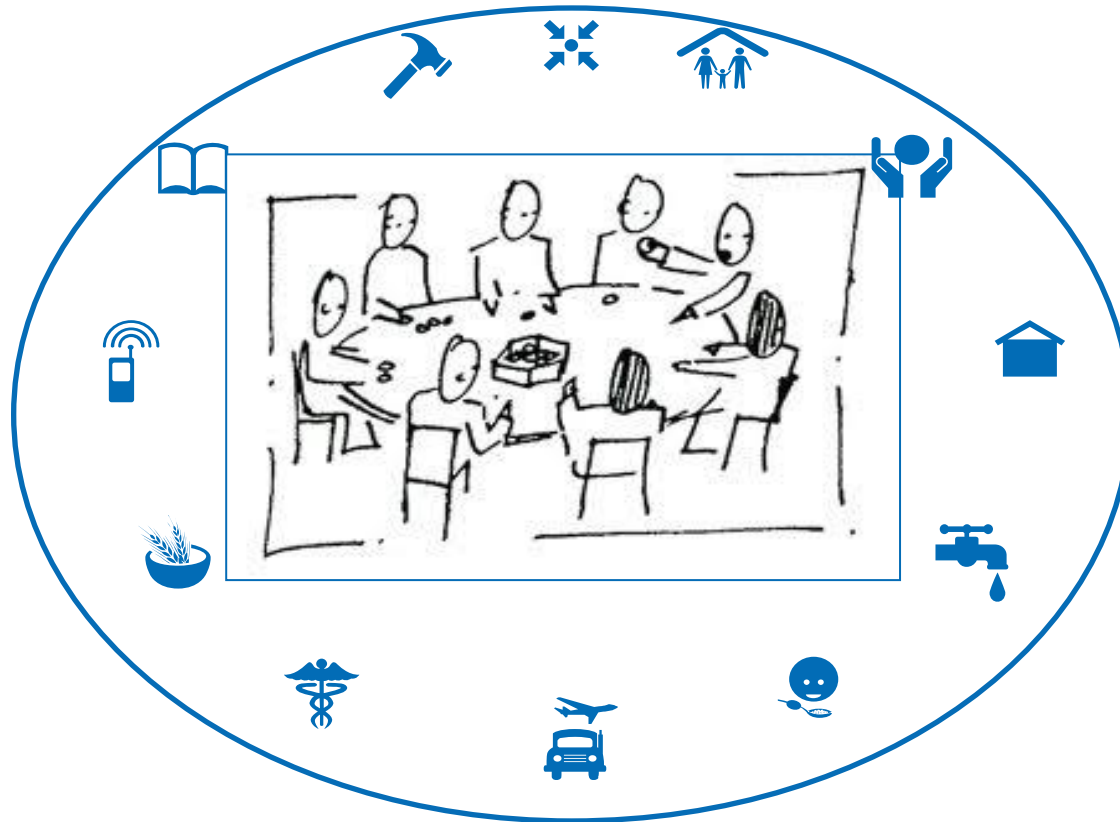


# AGENDA

1. General updates
2. NFI and winterization
3. The situation and needs of Lebanese returnees from Syria (IOM)
4. RRP6 launch
5. **Activity Info**
6. AOB

# RRP6 Monitoring and Reporting System

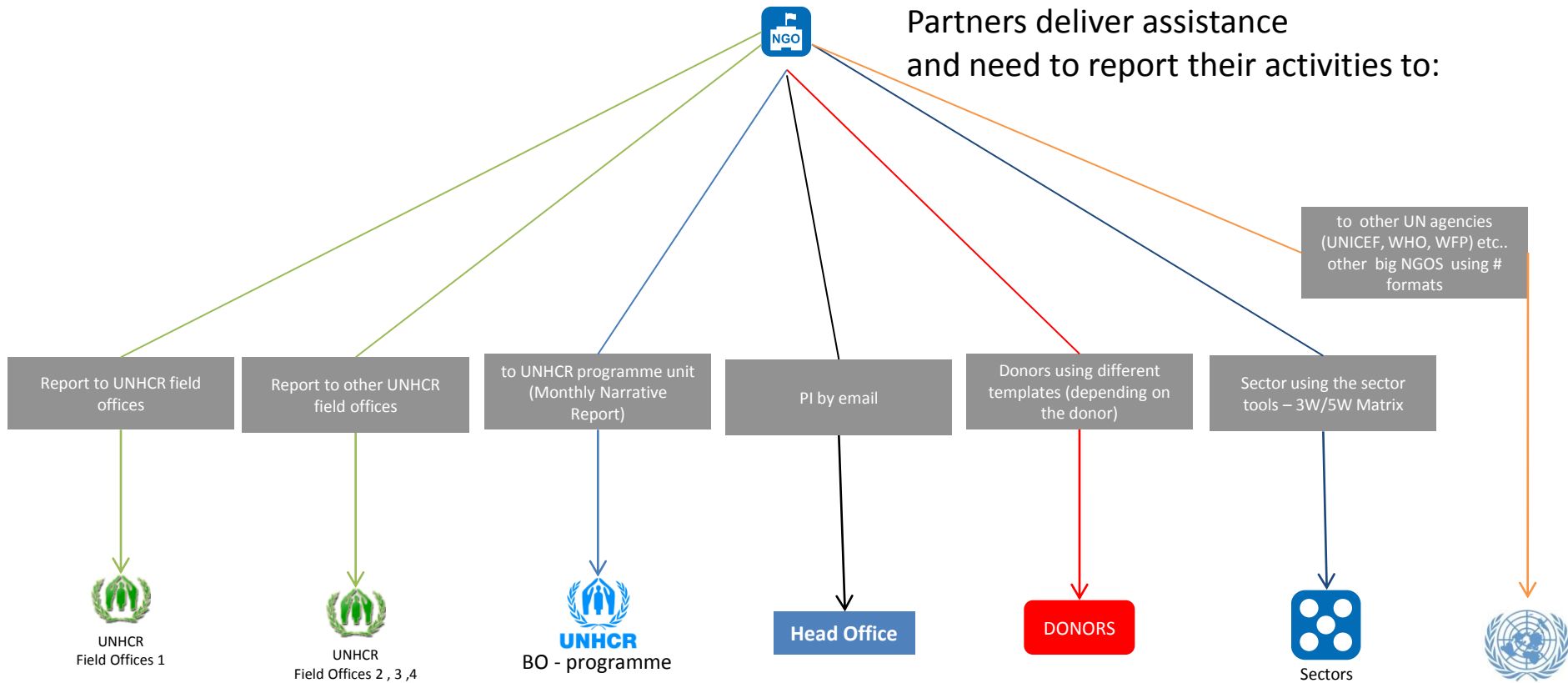
## ACTIVITY-INFO

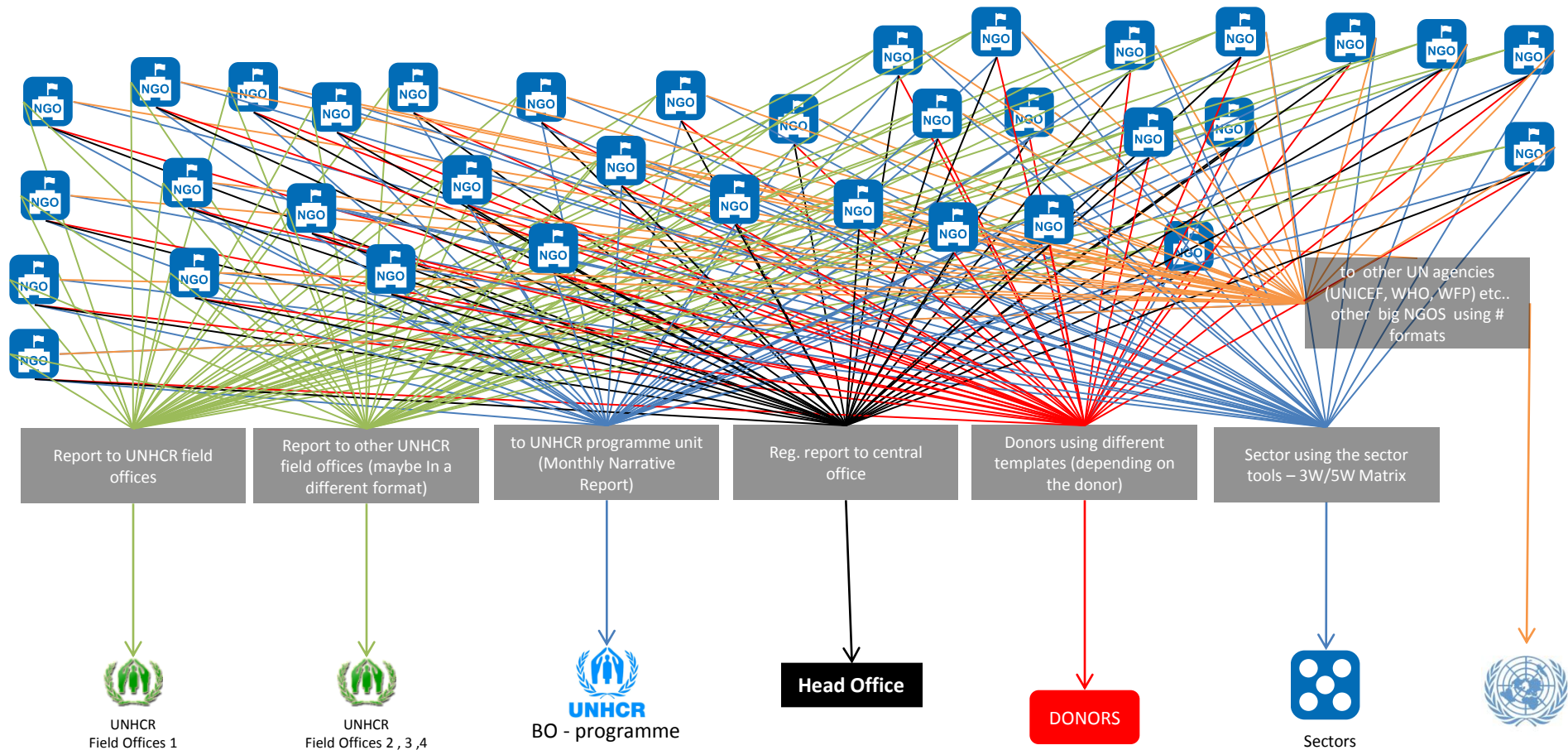


# The current situation

- Sectors using archaic systems (excel, word files)
- No common approach
- Multiplication of reports (field, sectors, M&E of agencies)
- Difficult to consolidate
- Limited capacity to analyse
- No common definition of indicators

# The current situation





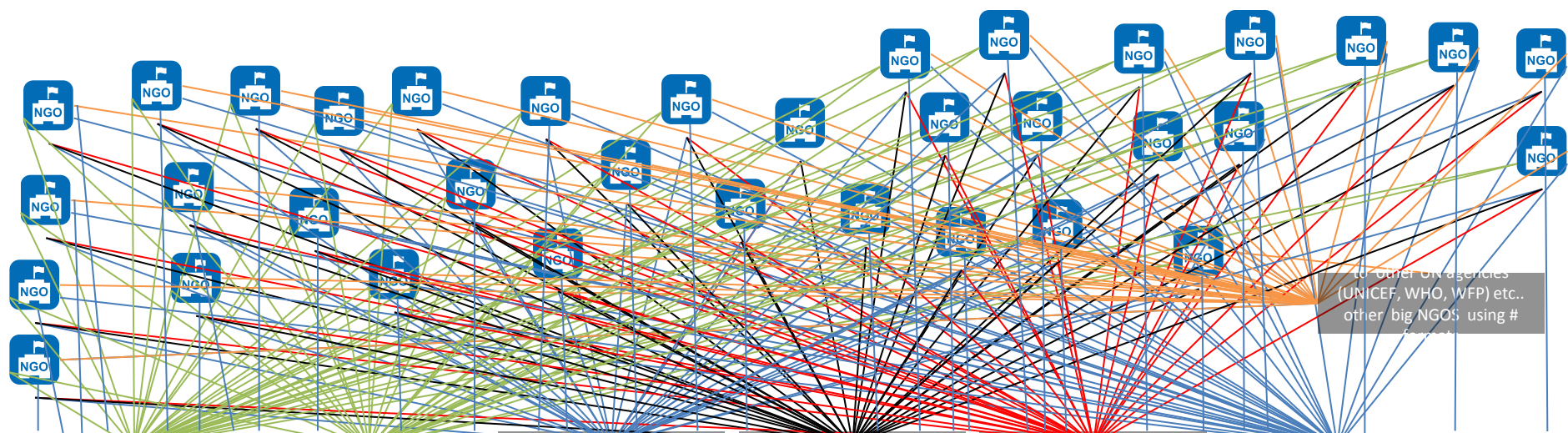
UNHCR Lebanon has 34 implementing partners

There are over 100 actors in Lebanon

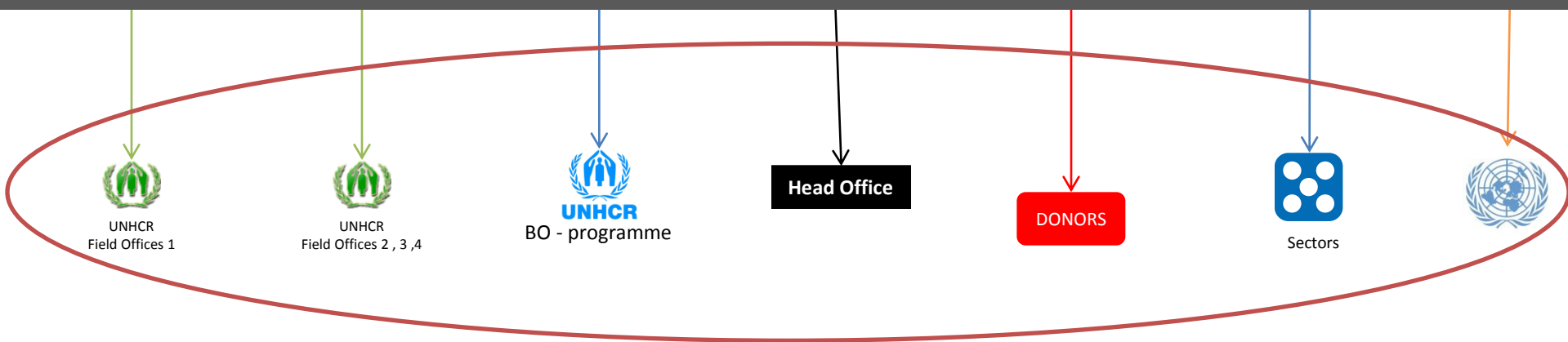
Users of reports still need to compile and analyse all this data

How can we simplify the system?





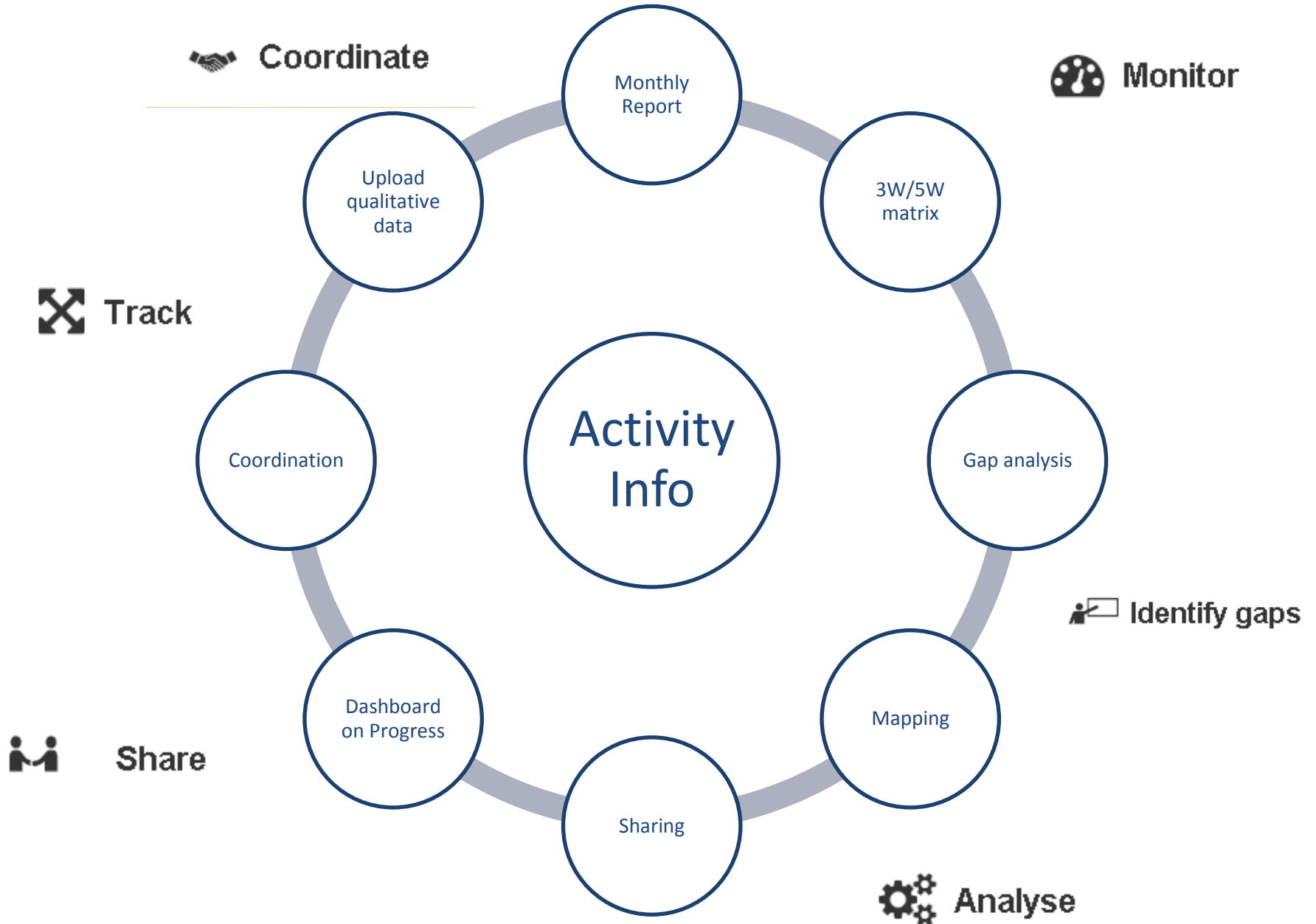
## A REPORTING INTERFACE BETWEEN ACTORS AND USERS



# WHAT IS ACTIVITY-INFO?

- An online/offline monitoring tool which collects, manages, maps and analyzes data on indicators
- Tracks progress against defined targets
- Generates custom reports: charts, tables and maps

# One-Stop Shop!



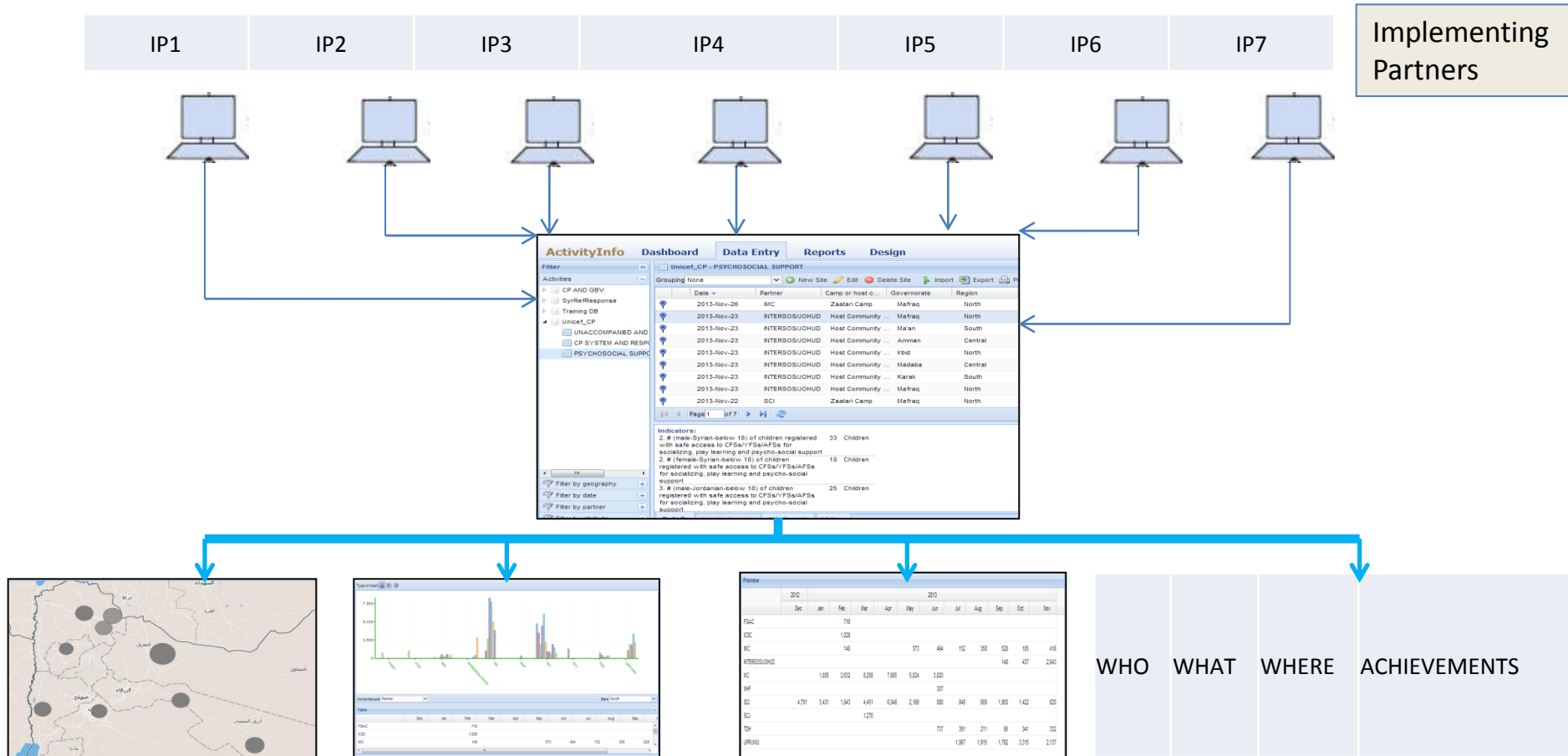
## What can be solved by AI?

- Overload of reporting
- Different systems in different sectors
- Incoherent data
- Dedicated staffing constantly required
- Delayed reporting

## What cannot be solved by AI?

- Data collection by partners (solution work-in-progress)
- Validity and reliability of data
- Unwillingness of partners to report

# How it works



It has three main functions: data entry, report and design.

## Points for discussion

- Open discussion
- Agreement on the role of the sector leads/co-leads on the management of AI database
- Decide on half day workshops with Sectors to finalize RRP6 indicator-target-disaggregation and level of reporting required
- Area of Operation training to partners focal points

# SECTOR UPDATES



# Food Security Sector- Update

## Highlights :

- E-card roll-out now complete in the Bekaa Valley, ongoing in the North.
- General satisfaction with the transition to the e-card from both the merchants/shops and the beneficiaries.
- WFP and UNHCR received approximately 29,000 appeals & over 20,000 households have so far been visited by verification teams.
- Data collection completed for the excluded population, now being uploaded into the WFP's database

## Action Points:

- WFP e-card roll-out to be finished across Lebanon by the end of December.
- Continuous discussion between WFP & UNHCR on joint monitoring-harmonisation of tools, training & modalities.
- Development of action plans based on recent participation in evaluation of global FSC coordination mechanisms.





# WASH - Update

## Highlights:

- Review and Update Contingency Plan to respond to critical emergencies
- Swift emergency response in Aarsal
- Review / agree on the hygiene Promotion indicators in RRP6
- Develop a central repository of Information, Education and Communication (IEC) materials
- Review and Update Hygiene Promotion Technical Guidelines

## Action Points:

- Link up with Health Sector to agree on respective roles of WASH and Health in outbreak
- Review Cash modalities in Hygiene kit and Baby kit distribution and communicate to Coordination Unit
- Complete the drafting of Technical Guidelines in Water and Sanitation