

# Camp profile

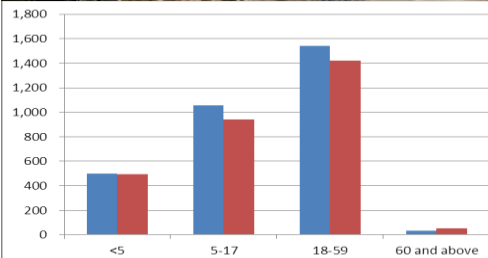
## Darashakran Refugee Camp, Erbil, KR - Iraq



As of 29 Dec. 2013

### Geographic Snapshot and Contextual Background

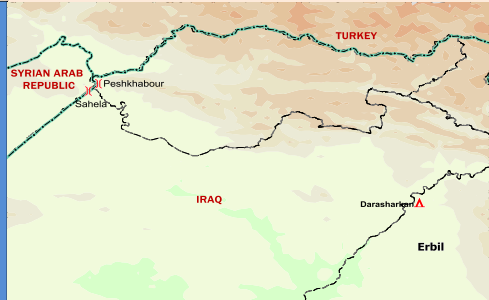
GPS coordinates:	43° 53' 14.872"E 36° 28' 1.665"N
Region and State:	Khabat, Erbil. KR - Iraq
Size of camp area:	1,150,000 m <sup>2</sup>
Pattern in Population Change:	Relocation from transit camps Bekhma, Baharka and Kawrgosk
Areas of Origin:	Majority is from Aleppo (Qamishli in Syria).



### Refugee Population

approximately  
6,040  
(Individuals)

Planned capacity:  
20,000  
(Individuals)



Age and gender break-down of the population as of 29 December 2013

Needs Met	Analysis	Minimum Sectoral Data (standard)	Minimum Sectoral Data
	<b>Health:</b> There is a PHC in the camp providing primary health care.	► Extent PoCs have access to primary health care. 1 health centre for 20,000 persons.	► 1 health post
	<b>WASH:</b> The sanitation is available in the camp. Verifications and updates continue.	► Liters of water/person/day: 20 ► Persons per latrine: <20 ► Persons per shower: <20	► Liters of water/person/day: 50-70 ► Persons per latrine: 6 ► Persons per showers: 6
	<b>Protection:</b> Registration Level 1 is completed. Registration Level 2 started in the first week of Nov. 2013, in a temporary site.	► 100 % of PoC registered on individual basis.	► Population registered on family basis.
	<b>Food:</b> Adequate quality and quantity of food aid provided.	► Extent food aid is appropriately distributed. ► Kilocalorie (Kcal)/person/day: 2,100	► Kilocalories person /day: 2,100
	<b>CRIs:</b> Refugees received CRI kits upon arrival in the camp including distribution of winterization kits.	► 100% of households whose needs for basic and domestic items are met.	► 100 % of households whose needs for basic and domestic items are met
	<b>Shelter:</b> Shelter and infrastructure established, improved and maintained.	► Average camp area per household 30 sq m ► 100% of households living in adequate dwellings.	► Average camp area per person 37.5 sq m. ► 100 % of households living in adequate dwellings.
<div>Minimum Sectoral Data Key:</div> <div>  = standard met or exceeded            = standard not met         </div>			

