

# Camp profile

## Darashakran Refugee Camp, Erbil, KR - Iraq

Camp opened: 29.09.2013

As of 30 Jan. 2014



### Geographic Snapshot and Contextual Background

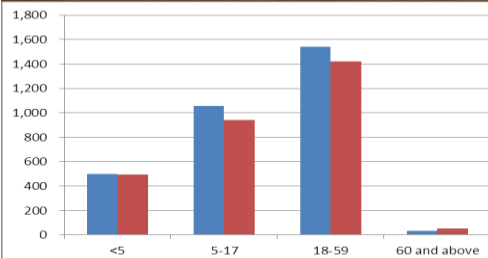
GPS coordinates: 43.888397 36.465401

Region and State: Khabat, Erbil. KR - Iraq

Size of camp area: 1,150,000 m²

Pattern in Population Change: Relocation from transit camps Bekhma, Baharka and Kawrgosk

Areas of Origin: Majority is from Aleppo (Qamishli in Syria).

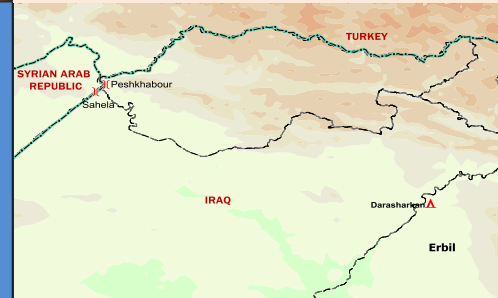


Age and gender break-down of the population as of 27 Jan. 2014

### Refugee Population

approximately 6,040 (Individuals)

Planned capacity: 20,000 (Individuals)



Needs Met	Analysis	Minimum Sectoral Data (standard)	Minimum Sectoral Data
	<b>Health:</b> There is a PHC in the camp providing primary health care.	► Extent PoCs have access to primary health care. 1 health centre for 20,000 persons.	► 1 health post
	<b>WASH:</b> The sanitation is available in the camp. Verifications and updates continue.	► Liters of water/person/day: 20 ► Persons per latrine: <20 ► Persons per shower: <20	► Liters of water/person/day: 50-70 ► Persons per latrine: 6 ► Persons per showers: 6
	<b>Protection:</b> Registration Level 1 is completed. Registration Level 2 continue and a permanent site of registration is installed.	► 100 % of PoC registered on individual basis.	► Population registered on family basis.
	<b>Food:</b> Adequate quality and quantity of food aid provided.	► Extent food aid is appropriately distributed. ► Kilocalorie (Kcal)/person/day: 2,100	► Kilocalories person /day: 2,100
	<b>CRIs:</b> Refugees received CRI kits upon arrival in the camp including distribution of winterization kits.	► 100% of households whose needs for basic and domestic items are met.	► 100 % of households whose needs for basic and domestic items are met
	<b>Shelter:</b> Shelter and infrastructure established, improved and maintained.	► Average camp area per household 30 sq m ► 100% of households living in adequate dwellings.	► Average camp area per person 37.5 sq m. ► 100 % of households living in adequate dwellings.
Minimum Sectoral Data Key:  = standard met or exceeded  = standard not met			

