

Camp profile

Domiz Refugee Camp, Dohuk, KR - Iraq

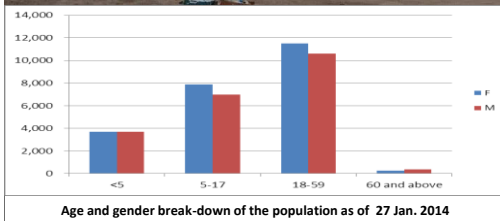
Camp opened: 01.04.2012

As of 30 Jan. 2014



Geographic Snapshot and Contextual Background

GPS coordinates:	42.89142378 36.78232231
Region and State:	Dohuk, KR - Iraq
Size of camp area:	1,142,500 m2
Pattern in Population Change:	Domiz camp is closed for reception new arrivals with the exception of family reunification cases.
Areas of Origin:	Majority is from Kurdish areas in Syria.



Refugee Population
approximately
45,000
(Individuals)

Planned capacity:
27,000
(Individuals)



Needs Met	Analysis	Minimum Sectoral Data (standard)	Minimum Sectoral Data
	<p>Health: A primary health care is established with two health posts. A Satellite health post was established. Mental health center will be merged with the primary health center.</p>	<p>► Extent PoCs have access to primary health care. 1 health centre for 20,000 persons.</p>	<p>► 1 Comprehensive Primary Health Center.</p>
	<p>WASH: The majority of families have access to piped water. Approx. 1,400 families are not connected yet. They receive water by water trucking. Emergency rehabilitation work is done on the sewage system in the most affected areas. The feasibility and design of overall sewerage (including treatment) is under way. Drainage construction is ongoing in three of the 14 areas and on the main drainage canals. However, stagnant water and uncontrolled surface water flow remains a major issue.</p>	<p>► Liters of water/person /day: =20 ► Persons per latrine: <20 ► Persons per shower: <20</p>	<p>► Liters of water/person /day: average 44-50 for the entire camp; however, per sector it varies from 23 to 140 litres. ► Persons per toilet: estimated at 30. Varies a lot per sector, private toilets are common in some sectors. ► Persons per showers: estimated at 16 (many private showers in the shelters).</p>
	<p>Protection: Registration of non-camp caseload (urban Dohuk) has resumed effective, along with regular registration updates for camp population.</p>	<p>► 100 % of PoC registered on individual basis.</p>	<p>► Population registered on family basis.</p>
	<p>Food: Adequate quality and quantity of food aid provided through food vouchers redeemable in retail shops in Domiz.</p>	<p>► Extent food aid is appropriately distributed. ► Kilocalorie (Kcal)/person/day: 2,100</p>	<p>► Kilocalories person /day: 2,100.</p>
	<p>CRI: Refugees received CRI kits upon the arrival in the camp including distribution of winterization kits.</p>	<p>► 100% population received the full CRI kits.</p>	<p>► 100 % of households whose needs for basic and domestic items are met.</p>
	<p>Shelter: The area of the camp is not enough to accommodate the existing refugee population. Additional land was allocated, but still to be developed. Relocations from flood prone and irregular areas are ongoing to new developed areas. Some 1800 families are either sharing tents with other families or live in irregular locations and are in need of settlement in proper areas of the camp which are under development.</p>	<p>► Average camp area per person 30 sq m ► 100% of households living in adequate dwellings</p>	<p>► Average camp area per person < 30 sq m ► 80 % of households living in adequate dwellings.</p>

Minimum Sectoral Data Key:

= standard met or exceeded

= standard not met

