

# Camp profile

## Kawergosk Refugee Camp, Erbil, KR - Iraq

Camp opened: 15.08.2013

As of 30 Jan. 2014



### Geographic Snapshot and Contextual Background

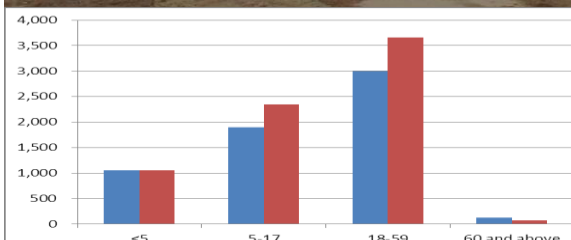
GPS coordinates: 43.8112815 36.3460809

Region and State: Khabat, Erbil. KR - Iraq

Size of camp area: 419.000m<sup>2</sup>

Pattern in Population Change: Organized large-scale relocation from the border with Syria at Peshkhabour and Sahela (Dohuk governorate) began 15.08.2013. Relocation of population to other camps ongoing.

Areas of Origin: Majority is from Qamishli in Syria.

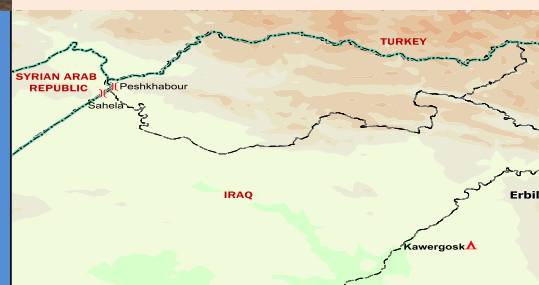


Age and gender break-down of the population as of 27 Jan. 2014

### Refugee Population

approximately  
13,201  
(Individuals)

Planned capacity:  
10,000  
(Individuals)



Needs Met	Analysis	Minimum Sectoral Data (standard)	Minimum Sectoral Data
	<b>Health:</b> There is a permanent PHC in the camp for providing primary health care.	► Extent PoCs have access to primary health care. 1 health centre for 20,000 persons.	► 1 health Primary Health Care.
	<b>WASH:</b> Pump stations under construction. Operation and maintenance of facilities and sanitation works on the permanent plots are ongoing.	► Liters of water/person /day: 20 ► Persons per latrine: <20 ► Persons per shower: <20	► Liters of water/person /day: 48 ► Persons per latrine: 30 ► Persons per showers: 30
	<b>Protection:</b> Registration Level 1 is completed, verifications and updates ongoing. Registration Level 2 started.	► 100 % of PoC registered on individual basis.	► Population registered on family basis.
	<b>Food:</b> Adequate quality and quantity of food aid provided.	► Extent food aid is appropriately distributed. ► Kilocalorie (Kcal)/person/day: 2,100	► Kilocalories person /day: 2,100
	<b>Core Relief Items (CRIs):</b> Refugees received CRI kits upon arrival in the camp including distribution of winterization kits.	► 100% of households whose needs for basic and domestic items are met.	► 100 % of households whose needs for basic and domestic items are met.
	<b>Shelter:</b> Shelter and infrastructure established, improved and maintained.	► Average camp area per household 30 sq m. ► 100% of households living in adequate dwellings.	► Average camp area per person 33.7 sq m ► 100 % of households living in adequate dwellings.

Minimum Sectoral Data Key:



=standard met or exceeded



= standard not met

