

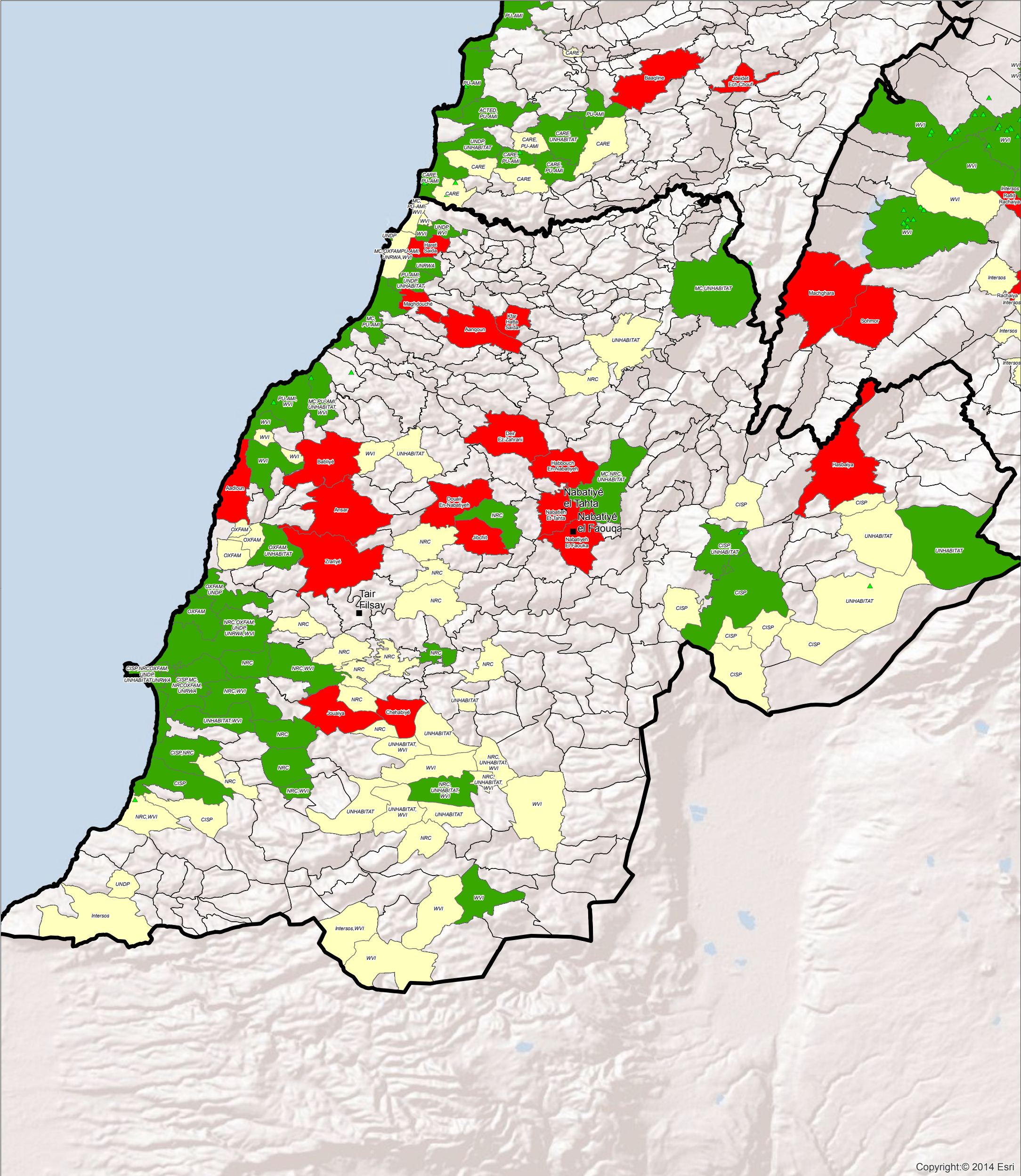
SYRIA REFUGEE RESPONSE  
South

WASH Sector Working Group  
Implementation of WASH Activities by Partner

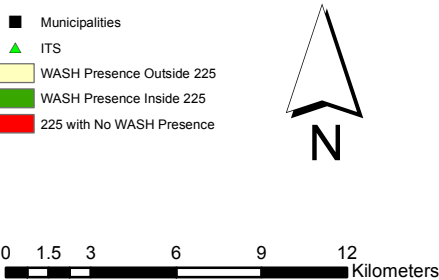


WASH Sector Working Group  
GIS and Mapping by UNHCR and UNICEF  
For more information and updates contact  
William Lavell wlavell@unicef.org

Date: 5/5/2014



Copyright:© 2014 Esri



Overview:  
This maps shows the location of WASH Activities within the 225 most vulnerable localities and at a general cadastral level since January 2014. Partner names are provided where there is a WASH presence. Where there is no WASH presence and the site is inside the 225 vulnerable localities, the location name is given.  
Data Sources:  
- The WASH Sector Data are based on Activity Info Reporting.  
All data used were the best available at the time of map production.  
The boundaries, names, and designations used on this map do not imply official endorsement or acceptance by the United Nations, UNICEF or UNHCR.

WASH Activities:  
Activities shown are based on the indicators from ActivityInfo  
For further information about this map please contact  
William Lavell  
Wlavell@unicef.org