

SYRIA REFUGEE RESPONSE

Beirut & Mount Lebanon

WASH Sector Working Group

Implementation of WASH Activities

and ITS Density and Location



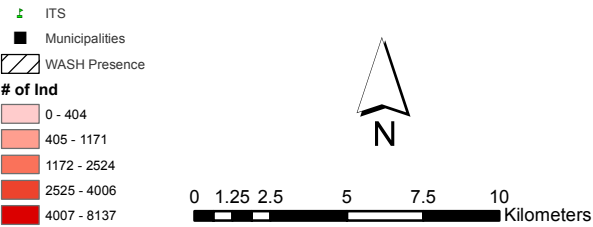
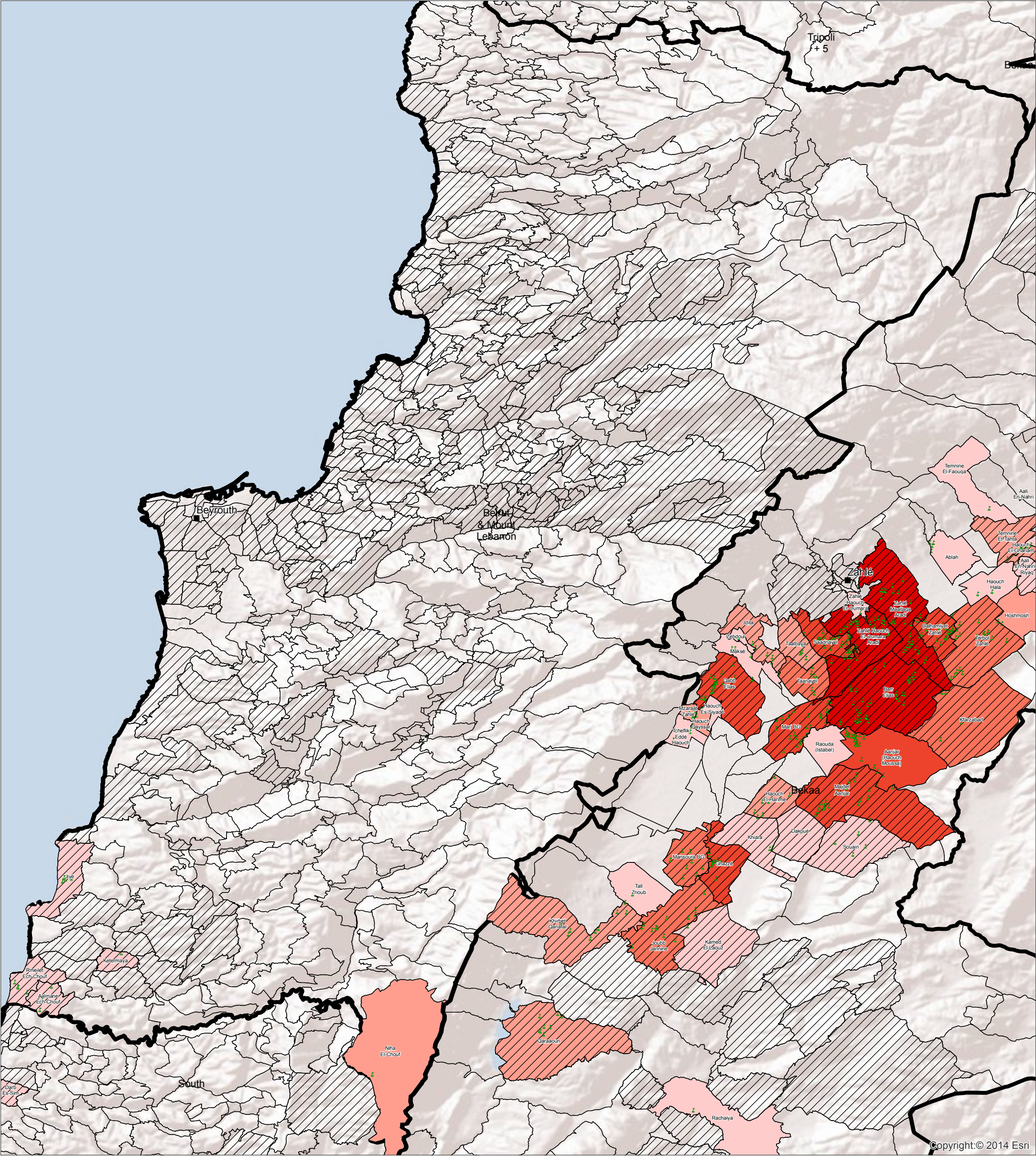
WASH Sector Working Group

GIS and Mapping by UNHCR and UNICEF

For more information and updates contact

William Lavell wlavell@unicef.org

Date: 5/5/2014



Overview:

This map shows the locations of informal tent settlements and the # of persons in ITS per cadastral as well as WASH presence. Please see the legend for the symbology used.

Data Sources:

- The WASH Sector Data is based on Activity Info Reporting cumulative up to the end of March 2014.
- WASH presence is based on any WASH activity and not

-The boundaries, names, and designations used on this map do not imply official endorsement or acceptance by the United Nations, UNICEF or UNHCR.

WASH Activities:

Activities shown are based on the indicators from ActivityInfo

ITS in Beirut Mt Lebanon

Governorat	Cadastar1	Local_Name	Nbr_Indiv	Partners
Mount Lebanon	Niha El-Chouf	Marj el Kokh	945	
Mount Lebanon	Rmeilet Ech-Chouf	Rmaileh 1	242	CARE,PU-AMI
Mount Lebanon	Ketermaya	Katermaya 1	150	CARE,PU-AMI
Mount Lebanon	Aalmane Ech-Chouf	Al Manie al deha 1	109	CARE
Mount Lebanon	Jiye	Jieh 1	38	PU-AMI