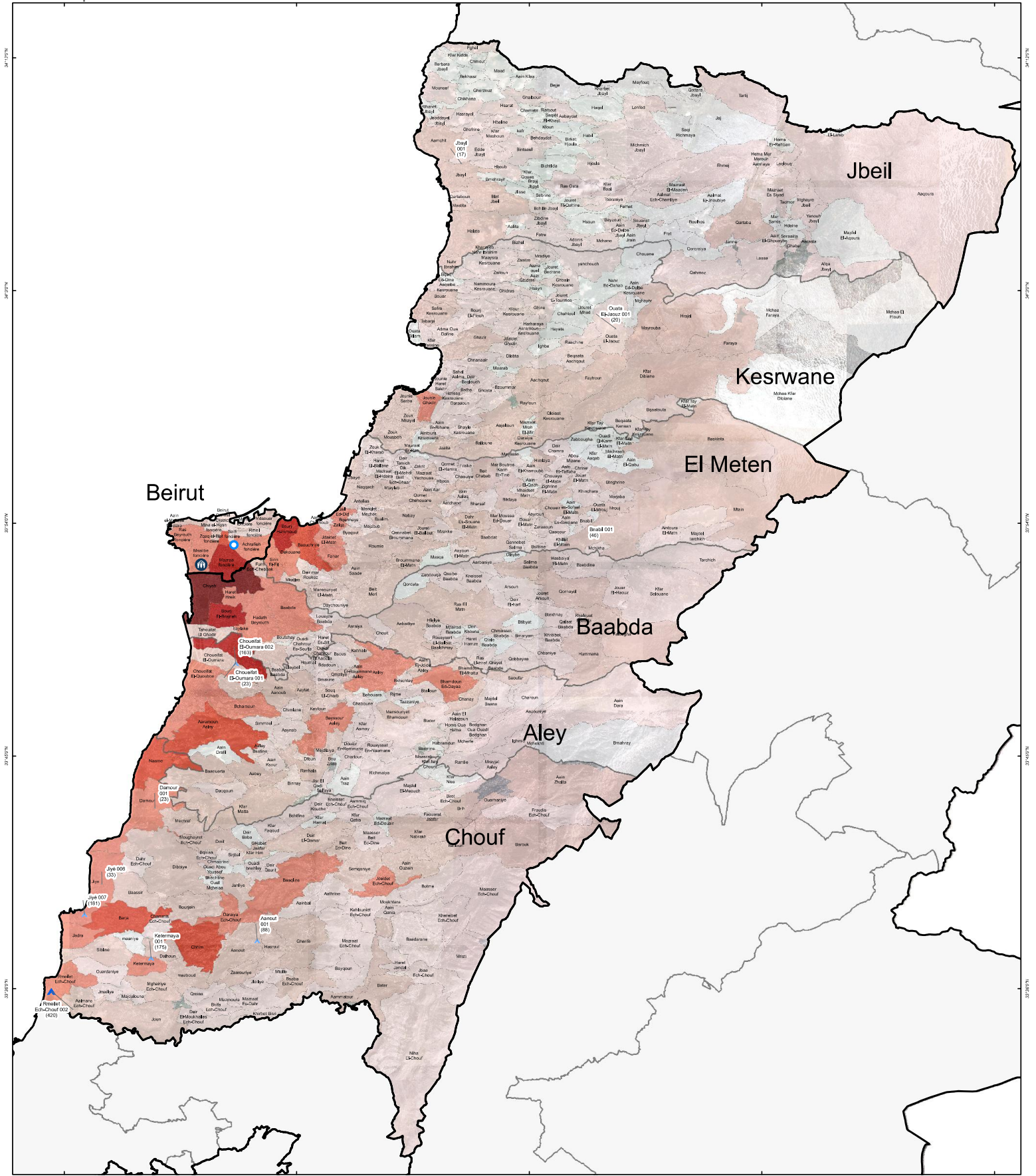


SYRIA REFUGEE RESPONSE  
LEBANON Beirut and Mount Lebanon Governorates  
Informal Settlements (IS) Locations and Number of Persons per IS  
As of 25 April 2014



**Legend**

UNHCR Branch Office  
UNHCR Field Office

**Tents**

- 4 - 9
- 10 - 50
- 51 - 100
- 101 - 500

**No. of Refugees per Cadastral**

- 0
- 1 - 100
- 100 - 1000
- 1000 - 5000
- 5000 - 10000
- 10000 - 20000
- 20000 - 37500

Governorate  
Caza

Rmellet Ech-Chouf 002: Pcode\_Name (420) : Number of Persons per IS

**Notes**

The boundaries, names and designations used on this map do not imply official endorsement of the United Nations. All data used are the best available at the time of map production.

Data Sources:

- UNHCR
- Lebanese Border, Caza and Cadastral Boundaries: NPMPIT 2005.
- IS Mapping by MEDAIR - 25 April 2014
- Geographic Projection WGS 1984

Registered Refugees Figures by UNHCR as of 31 March 2014.  
For more information contact Rana G. Kasli at [rkasli@unhcr.org](mailto:rkasli@unhcr.org)

GIS and Mapping by UNHCR. For information and updates contact: James Leon-Dufour: [leonduf@unhcr.org](mailto:leonduf@unhcr.org)  
Maroun Sader: [sader@unhcr.org](mailto:sader@unhcr.org)

NPMPIT: National Physical Master Plan for the Lebanese Territory

