


## Registered (May. 23 - May. 29)

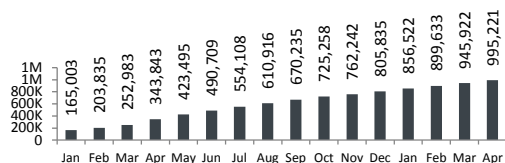
Beirut & Mt. Leb.	2,694
North	1,943
Bekaa	4,193
South	713
<b>Total</b>	<b>9,543</b>

 <b>1,092,272</b>	<b>Total</b>
<b>1,034,176</b>	<b>Registered</b>
<b>58,096</b>	<b>Awaiting</b>

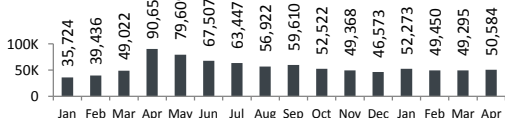
	Total awaiting	Average waiting period
Beirut & Mt. Leb.	14,580	21
North	5,369	19
Bekaa	36,175	35
South	1,972	12
<b>Total</b>	<b>58,096</b>	<b>29</b>

## UNHCR Registered

■ Total Active Syrians (as of the end of each month)



■ Syrians Registration by Month



## Place of Origin

Place of Origin	Persons	% Total
Homs	234,744	22.7%
Aleppo	204,704	19.8%
Idlib	141,604	13.7%
Rural Damascus	140,001	13.5%
Hama	75,924	7.3%
Dar'a	68,599	6.6%
Damascus	50,932	4.9%
Ar-raqqa	47,931	4.6%
Al-hasakeh	25,134	2.4%
Deir-ez-zor	19,720	1.9%
Quneitra	7,823	0.8%
Lattakia	4,277	0.4%
Tartous	3,032	0.3%
As-sweida	648	0.1%
Others, n/a	9,103	0.9%

## Distribution of Syrians in Lebanon

	Persons	Households	% Total
<b>Beirut</b>	<b>28,842</b>	<b>8,109</b>	<b>2.8%</b>
<b>Mount Lebanon</b>	<b>246,496</b>	<b>60,872</b>	
El Meten	49,999	13,857	4.8%
Baabda	81,237	19,543	7.9%
Kesrwane	11,611	3,238	1.1%
Chouf	48,387	11,016	4.7%
Aley	51,390	12,150	5.0%
Jbeil	3,872	1,068	0.4%
<b>North</b>	<b>275,981</b>	<b>69,084</b>	
Akkar	105,618	26,224	10.2%
Tripoli	64,388	17,229	6.2%
El Minieh-Denr	57,871	14,173	5.6%
El Koura	16,154	4,017	1.6%
El Batroun	16,594	3,791	1.6%
Zgharta	12,915	3,098	1.2%
Bcharre	2,441	552	0.2%
<b>Bekaa</b>	<b>355,508</b>	<b>76,423</b>	
Zahle	164,537	34,730	15.9%
Baalbek	113,222	25,116	10.9%
West Bekaa	60,833	12,962	5.9%
Rachaya	11,012	2,372	1.1%
El Hermel	5,904	1,243	0.6%
<b>South</b>	<b>127,349</b>	<b>28,406</b>	
Sour	30,278	6,895	2.9%
Saida	46,903	10,431	4.5%
Marjaayoun	7,017	1,511	0.7%
Jezzine	2,696	625	0.3%
El Nabatieh	27,936	6,120	2.7%
Hasbaya	5,020	1,216	0.5%
Bent Jbeil	7,499	1,608	0.7%
<b>Total Lebanon</b>	<b>1,034,176</b>	<b>242,894</b>	

\* Number of villages in Lebanon hosting Syrians is 1,742

## Age & Gender

Age	0-4	5-11	12-17	18-59	60+	Total	% Total
Female	97,390	107,084	63,025	256,303	15,969	539,771	52.2%
Male	101,706	113,419	64,114	202,964	12,202	494,405	47.8%
<b>Total</b>	<b>199,096</b>	<b>220,503</b>	<b>127,139</b>	<b>459,267</b>	<b>28,171</b>	<b>1,034,176</b>	<b>100.0%</b>
	19.3%	21.3%	12.3%	44.4%	2.7%		

