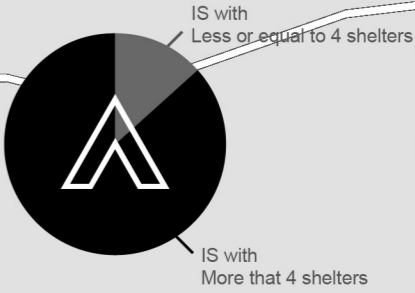
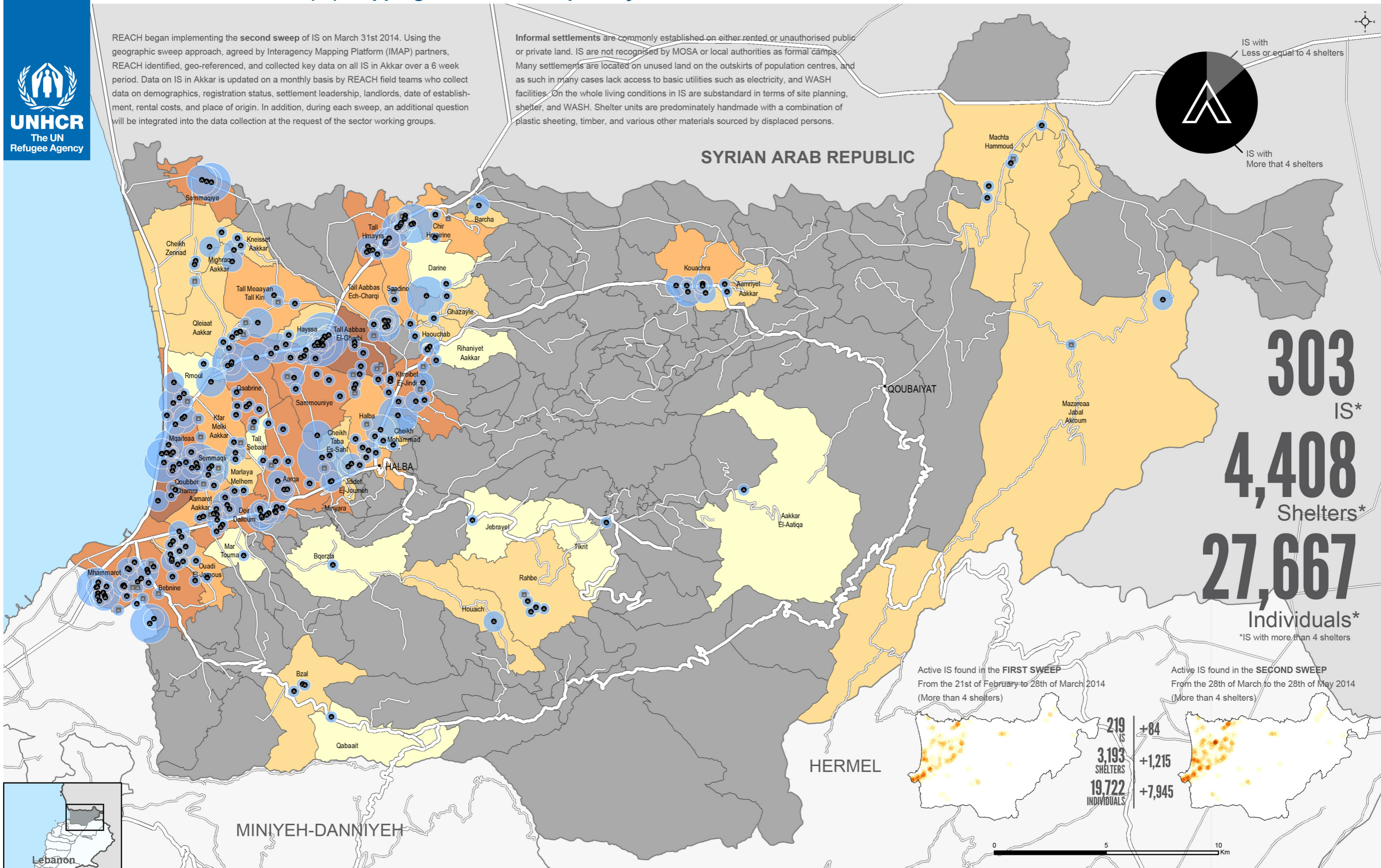


# Lebanon - North Governorate - Akkar District

## Informal Settlements (IS) Mapping - Second Sweep Analysis

REACH began implementing the **second sweep** of IS on March 31st 2014. Using the geographic sweep approach, agreed by Interagency Mapping Platform (IMAP) partners, REACH identified, geo-referenced, and collected key data on all IS in Akkar over a 6 week period. Data on IS in Akkar is updated on a monthly basis by REACH field teams who collect data on demographics, registration status, settlement leadership, landlords, date of establishment, rental costs, and place of origin. In addition, during each sweep, an additional question will be integrated into the data collection at the request of the sector working groups.

Informal settlements are commonly established on either rented or unauthorised public or private land. IS are **not** recognised by MOSA or local authorities as formal camps. Many settlements are located on unused land on the outskirts of population centres, and as such in many cases lack access to basic utilities such as electricity, and WASH facilities. On the whole living conditions in IS are substandard in terms of site planning, shelter, and WASH. Shelter units are predominately handmade with a combination of plastic sheeting, timber, and various other materials sourced by displaced persons.



**303** IS\*

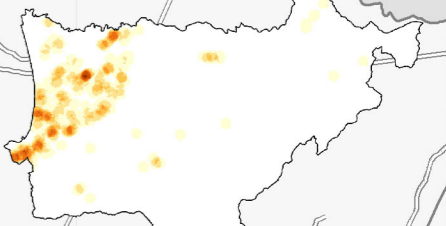
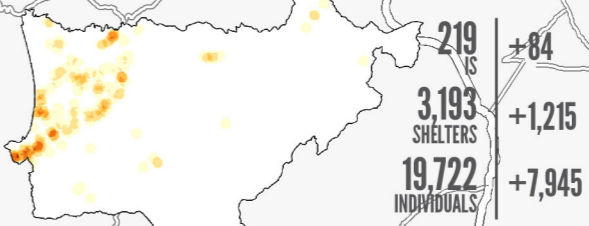
**4,408** Shelters\*

**27,667** Individuals\*

\*IS with more than 4 shelters

Active IS found in the **FIRST SWEEP**  
From the 21st of February to 28th of March 2014  
(More than 4 shelters)

Active IS found in the **SECOND SWEEP**  
From the 28th of March to the 28th of May 2014  
(More than 4 shelters)



Active Informal Settlement (IS)  
Identified during the second sweep

- IS with more than 4 shelters
- IS with less than, or equal to, 4 shelters

Number of individuals living in IS per cadastral

15 - 70	301 - 781	1498 - 2865
71 - 300	782 - 1497	

Number of individuals living in IS

493 - 1011
301 - 492
165 - 300
82 - 164
13 - 81

Cadastral  
 Primary road  
 Secondary road

Data Sources: COD, OSM, UNHCR, REACH IS Mapping  
Note: Data, designations and boundaries contained on this map are not warranted to be error-free and do not imply acceptance by the REACH partners, associated, donors mentioned on this map  
Coordinate System: Web Mercator EPSG : 3857  
Contact: reach.mapping@impact-initiatives.org