

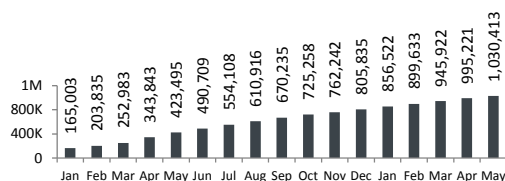
Registered (Jun. 13 - Jun. 19)	
Beirut & Mt. Leb.	3,137
North	2,239
Bekaa	4,271
South	626
<b>Total</b>	<b>10,273</b>

<b>1,107,550</b>	<b>Total</b>
<b>1,057,270</b>	<b>Registered</b>
<b>50,280</b>	<b>Awaiting</b>

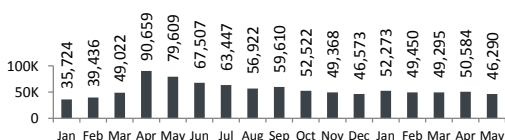
	Total awaiting	Average waiting period
Beirut & Mt. Leb.	10,884	20
North	3,077	16
Bekaa	33,563	31
South	2,756	18
<b>Total</b>	<b>50,280</b>	<b>27</b>

## UNHCR Registered

■ Total Active Syrians (as of the end of each month)



■ Syrians Registration by Month



Place of Origin		
Homs	236,268	22.3%
Aleppo	209,620	19.8%
Rural Damascus	145,237	13.7%
Idlib	143,102	13.5%
Hama	77,311	7.3%
Dar'a	70,615	6.7%
Damascus	51,871	4.9%
Ar-raqqa	51,154	4.8%
Al-hasakeh	25,823	2.4%
Deir-ez-zor	20,670	2.0%
Quneitra	8,159	0.8%
Lattakia	4,369	0.4%
Tartous	3,086	0.3%
As-sweida	672	0.1%
Others, n/a	9,313	0.9%

## Distribution of Syrians in Lebanon

	Persons	Households	% Total
<b>Beirut</b>	<b>29,444</b>	<b>8,332</b>	<b>2.8%</b>
<b>Mount Lebanon</b>	<b>253,452</b>	<b>62,777</b>	
El Meten	51,136	14,223	4.8%
Baabda	83,479	20,096	7.9%
Kesrwane	12,158	3,415	1.1%
Chouf	49,322	11,278	4.7%
Aley	53,291	12,639	5.0%
Jbeil	4,066	1,126	0.4%
<b>North</b>	<b>277,067</b>	<b>69,089</b>	
Akkar	106,430	26,349	10.1%
Tripoli	63,818	17,016	6.0%
El Minieh-Denr	58,266	14,208	5.5%
El Koura	16,179	3,990	1.5%
El Batroun	16,721	3,824	1.6%
Zgharta	13,111	3,126	1.2%
Bcharre	2,542	576	0.2%
<b>Bekaa</b>	<b>368,456</b>	<b>79,685</b>	
Zahle	169,509	35,946	16.0%
Baalbek	118,724	26,574	11.2%
West Bekaa	62,885	13,445	5.9%
Rachaya	11,274	2,440	1.1%
El Hermel	6,064	1,280	0.6%
<b>South</b>	<b>128,851</b>	<b>28,775</b>	
Sour	30,715	7,003	2.9%
Saida	47,427	10,570	4.5%
Marjaayoun	7,186	1,549	0.7%
Jezzine	2,773	641	0.3%
El Nabatieh	28,268	6,199	2.7%
Hasbaya	4,879	1,180	0.5%
Bent Jbeil	7,603	1,633	0.7%
<b>Total Lebanon</b>	<b>1,057,270</b>	<b>248,658</b>	

\* Number of villages in Lebanon hosting Syrians is 1,751

## Age & Gender

Age	0-4	5-11	12-17	18-59	60+	Total	
Female	99,482	110,302	64,521	262,545	16,400	<b>553,250</b>	52.3%
Male	103,969	116,639	65,491	205,410	12,511	<b>504,020</b>	47.7%
<b>Total</b>	<b>203,451</b>	<b>226,941</b>	<b>130,012</b>	<b>467,955</b>	<b>28,911</b>	<b>1,057,270</b>	<b>100.0%</b>
	19.2%	21.5%	12.3%	44.3%	2.7%		

