

Information about health assistance for Syrian refugees in Lebanon

UNHCR provides health care services to all registered refugees through its partners.

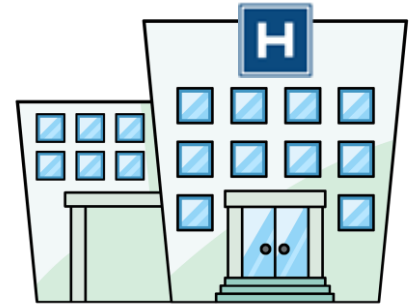
GlobeMed Lebanon is the new UNHCR's medical partner in Bekaa, North, South and Mount Lebanon Beirut, for your referral to hospital!



If you need medical care go first to a Primary Health Care Centre or a Dispensary before you go to hospital.

In case of emergency contact GlobeMed Lebanon's hotline. They will help you access one of the UNHCR designated hospitals.

Ask for the Health Brochure for more information!



GlobeMed Lebanon hotline

01-518111



Health care services supported by UNHCR in Lebanon are funded by generous contributions from the Republic of Chile, the European Commission for Humanitarian Aid and Civil Protection (ECHO), the People of Japan, the Russian Federation and the Spanish International Cooperation Agency for Development and the State of Kuwait



Humanitarian Aid
and Civil Protection



من الشعب الياباني
From the People of Japan



spanish aid



الكويت تستجيب
Kuwait Responds