



## KEY ACHIEVEMENT OF THE MONTH

More than **832,600** refugees and vulnerable host members received food assistance.

## HIGHLIGHTS:

Halfway through the RRP6 year, food security assistance programmes continued to increase to meet the food security needs of vulnerable refugees and host communities throughout the country.

Significant progress was made in June, with WFP and its co-operating partners reaching some 778,193 Syrian refugees, thus injecting approximately an additional USD 22.5 million into the Lebanese economy in June.

Other food security sector partners reached some 54,448 vulnerable individuals (including an additional 2,478 new beneficiaries) among the four different caseloads, and in parallel injecting a further US\$1.8million in the economy, also in June alone.

Although assistance was provided through various modalities, the electronic card (e-card) remained the dominant means of reaching the refugees, accounting for over 90% of food assistance delivery modality. Other partners used conditional cash transfers, mainly through ATM cards, paper vouchers and food parcels. WFP and its partners also rely on the food parcel modality to reach newly arrived refugees awaiting registration.

The FAO/Ministry of Agriculture spearheaded livestock vaccination programme has so far reached over 688 000 livestock across the country. In addition 933 vulnerable Lebanese and 14 Syrian refugee small-scale livestock herders were assisted with concentrated feed in Akkar and other cazas in North Lebanon.



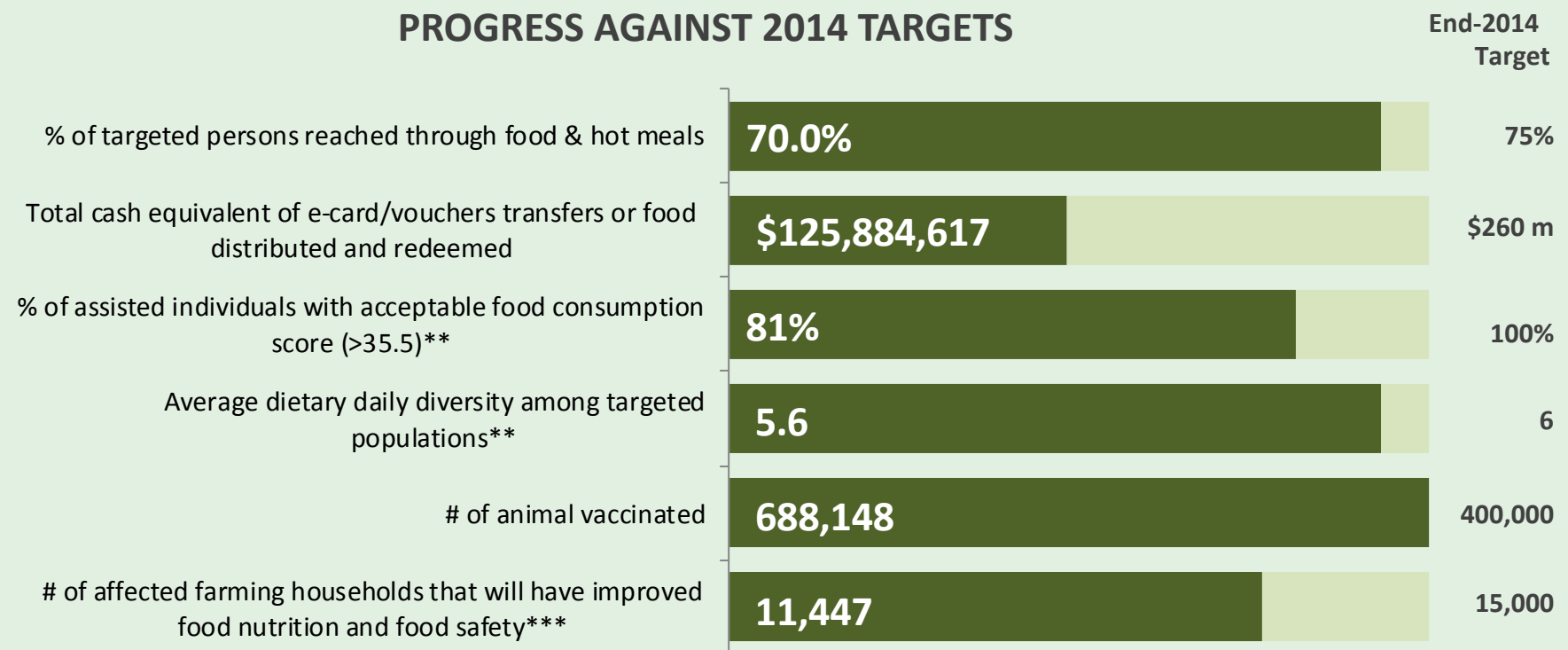
## NEEDS ANALYSIS:

In July, the Food Security agencies will continue to increase provision of food assistance to meet the kilo-calorific needs of Syrian refugees and other vulnerable populations affected by the Syrian crisis.

Food sector partners plan to provide over 910,000 refugees and other populations of concern with food assistance, primarily through e-cards, while newly arrived refugees will receive a once-off food parcel.

WFP plans to include some donated dates in the food parcels to be distributed during the Ramadan period. Coverage and gap analysis will continue being prioritized, so as to optimize the available resources for the most in need.

## PROGRESS AGAINST 2014 TARGETS



\*\* Indicators are reported on a quarterly basis - \*\*\* Target changed and achievements reported for first time since beginning of 2014.

Source: figures reported above reflect the information reported to Sector Coordinators by Partners participating in Working Groups

Leading Agency: WFP - Naison CHAKATVA - [naison.chakatsva@wfp.org](mailto:naison.chakatsva@wfp.org)  
Reporting Agencies:

