

# Al Za'atari Camp: FORTNIGHTLY WASH CENTRE MONITORING

## Al Za'atari Camp: OVERVIEW


# of refugees: **86,040 ind.**

Number of active WASH centres: **365**

#female: 187 #Male: 178

# of WASH centres following the minimum standards<sup>(1)</sup>:

This week: 12 (3%) - Two weeks ago: 9 (3%)

% of WASH centres NOT meeting the minimum standards<sup>(1)</sup> on:

Disposal arrangements in female WASH centres: **161 (86%)**

Cleanliness and hygiene: **225 (63%)**

Cubicle doors: **200 (56%)**

Lighting: **193 (54%)**

Locks on cubicle doors: **149 (42%)**

Septic tank overflow: **0 (0%)**

2 weeks ago

159 (85%)

257 (70%)

195 (55%)

194 (53%)

145 (40%)

1 (0%)

Number of WASH centres assessed: **355\***

### TOILETS

This week

2 weeks ago

# of functional toilets: **1,836** 1,842

% of functional toilets: **90%** 90%

Average # of individuals / functional toilet<sup>\*\*</sup>: **47** 47

### DOORS AND LOCKS

This week

2 weeks ago

# of centres with doors on 100% of stalls: **155 (44%)** 161 (45%)

# of centres W/O at least 1 lockable toilet and shower stall: **149 (42%)** 145 (41%)

% of female centres W/O at least 1 lockable toilet & shower: **63%** 71%

% of toilet stalls with lock: **58%** 62%

% of shower stalls with lock: **43%** 46%

# of female WASH centres with doors on 100% of stalls: **103 (57%)** 111 (62%)

### LIGHTING

This week

2 weeks ago

# of WASH centres with int/ext lighting: **162 (46%)** 162 (46%)

# of female WASH centres with int/ext lighting: **118 (66%)** 114 (63%)

### ACCESS

This week

2 weeks ago

# of WASH centres locked: **10** 9

# of toilet or shower stalls locked: **532 (26%)** 555 (27%)

# of centres W/O unlocked stall for disable person: **174** 183

### SANITARY WASTE DISPOSAL

This week

2 weeks ago

# of centres W/O disposal arrangements: **164 (91%)** 161 (89%)  
(female centres only)

### CLEANLINESS OF FACILITIES

# of WASH centres considered clean and hygienic: **130 (37%)** 99 (28%)

### WATER

This week

2 weeks ago

# of WASH centres without running water: **294 (83%)** 303 (85%)

% of WASH centres with no internal or external taps: **33%** 36%

Average # of taps per centre in/outside: **0.5/1.3** 0.5/1.2

# of tap leaking in centres with running water in/outside: **21/9** 17/1

### PRIVATE CONNECTIONS

This week

2 weeks ago

# of private connections to water tanks: **139** 127

# of private connections to taps: **100** 100

# of private connection to WASH centre septic tanks<sup>\*\*\*\*</sup>: **56** 66

### SEWAGE & STAGNANT WATER

# septic tanks with visible signs of overflow: **0 (0%)** 1 (1%)

# of centres W/O stagnant water inside or outside<sup>\*\*\*</sup>: **257 (72%)** 273 (77%)

\* All active wash centres were assessed, except those that were locked and could not be accessed for the assessment

\*\* The minimum standard states that in communal facilities toilets should be available at a rate of one functional toilet per 50 people.

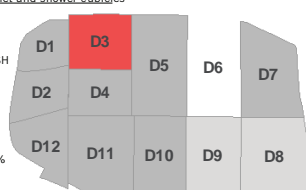
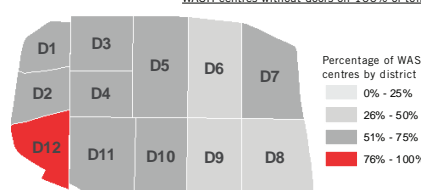
\*\*\* The minimum standard is that 80% of WASH centres have no stagnant water.

\*\*\*\* This includes both pipes connecting into and drains connecting close to septic tanks.

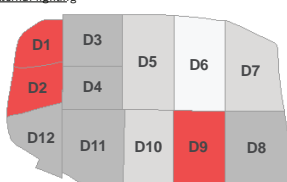
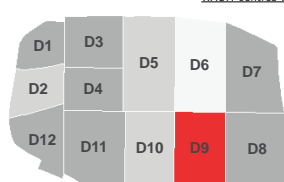
### THIS WEEK

### 2 WEEKS AGO

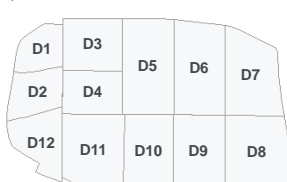
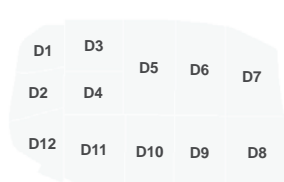
WASH centres without doors on 100% of toilet and shower cubicles



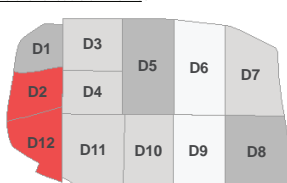
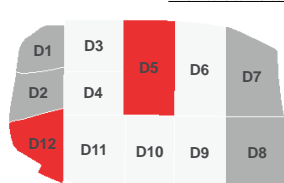
WASH centres with NO internal or external lighting



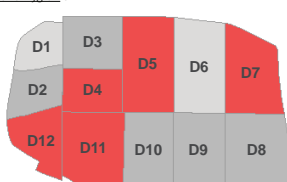
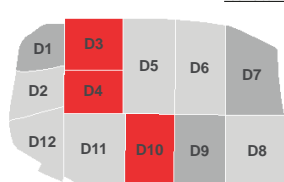
WASH centres with NO signs of septic tank overflow



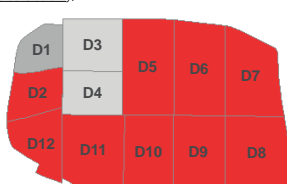
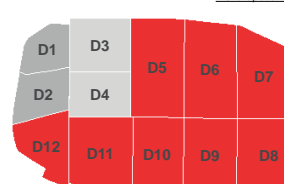
WASH centres without at least one toilet and shower cubicle which lock



Facilities NOT considered clean and hygienic



NO disposal arrangements (female centres only)



# Al Za'atari Camp: FORTNIGHTLY WASH CENTRE MONITORING

## Al Za'atari Camp: DISTRICT 1

# of refugees: 7,059 ind.

Number of active WASH centres: 9

#female: 6 #Male: 3

% of WASH centres NOT meeting the minimum standards<sup>(1)</sup> on:

2 weeks ago

Disposal arrangements in female WASH centres: **4 (67%)**

Cleanliness and hygiene: **5 (71%)**

Cubicle doors: **6 (86%)**

Lighting: **6 (86%)**

Locks on cubicle doors: **5 (71%)**

Septic tank overflow: **0 (0%)**

4 (67%)

4 (44%)

5 (71%)

7 (78%)

5 (56%)

0 (0%)

# of WASH centres following the minimum standards<sup>(1)</sup>:

This week: 0 (0%) - Two weeks ago: 0 (0%)

Number of WASH centres assessed: 7\*



### TOILETS

This week

2 weeks ago

# of functional toilets: **34**

20

% of functional toilets: **100%**

61%

Average # of individuals / functional toilet\*\*: **208**

353



### DOORS AND LOCKS

This week

2 weeks ago

# of centres with doors on 100% of stalls: **1 (14%)**

2 (29%)

# of centres W/O at least 1 lockable toilet and shower stall: **5 (71%)**

5 (71%)

% of female centres W/O at least 1 lockable toilet & shower: **17%**

17%

% of toilet stalls with lock: **24%**

27%

% of shower stalls with lock: **25%**

28%

# of female WASH centres with doors on 100% of stalls: **0 (0%)**

1 (25%)



### LIGHTING

This week

2 weeks ago

# of WASH centres with int/ext lighting: **1 (14%)**

0 (0%)

# of female WASH centres with int/ext lighting: **1 (25%)**

0 (0%)



### ACCESS

This week

2 weeks ago

# of WASH centres locked: **2**

2

# of toilet or shower stalls locked: **10 (29%)**

8 (24%)

# of centres W/O unlocked stall for disable person: **4**

7



### SANITARY WASTE DISPOSAL

This week

2 weeks ago

# of centres W/O disposal arrangements: **4 (100%)**

4 (100%)



### CLEANLINESS OF FACILITIES

# of WASH centres considered clean and hygienic: **2 (29%)**

3 (43%)



### WATER

This week

2 weeks ago

# of WASH centres without running water: **6 (86%)**

7 (100%)

% of WASH centres with no internal or external taps: **57%**

71%

Average # of taps per centre in/outside: **0.1/1.3**

0.0/1.6

# of tap leaking in centres with running water in/outside: **0/0**

0/0



### PRIVATE CONNECTIONS

This week

2 weeks ago

# of private connections to water tanks: **1**

0

# of private connections to taps: **0**

0

# of private connection to WASH centre septic tanks\*\*\*\*: **1**

0



### SEWAGE & STAGNANT WATER

# septic tanks with visible signs of overflow: **0 (0%)**

0 (0%)

# of centres W/O stagnant water inside or outside\*\*\*: **7 (100%)**

7 (100%)

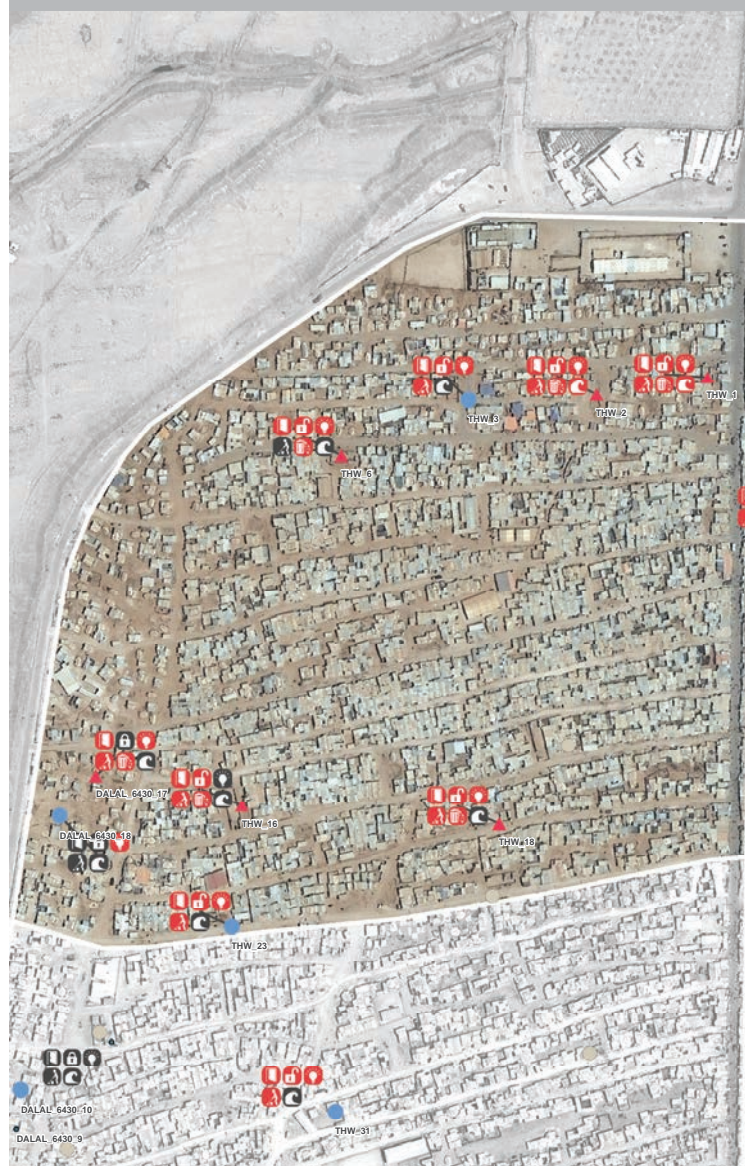
\* All active wash centres were assessed, except those that were locked and could not be accessed for the assessment

\*\* The minimum standard states that in communal facilities toilets should be available at a rate of one functional toilet per 50 people.

\*\*\* The minimum standard is that 80% of WASH centres have no stagnant water.

\*\*\*\* This includes both pipes connecting into and drains connecting close to septic tanks.

### DISTRICT 1: Compliance with minimum standards



### DISTRICT 1: Compliance with minimum standards

Complied on doors	Complied on locks	Complied on lighting	female WASH centre
Did not comply on doors	Did not comply on locks	Did not comply on lighting	
Complied on cleanliness	Complied on disposal arrangements	Septic tank not overflowing	Male WASH centre
Did not comply on cleanliness and hygiene	Did not comply on disposal arrangements	Septic tank overflowing	



# Al Za'atari Camp: FORTNIGHTLY WASH CENTRE MONITORING

## Al Za'atari Camp: DISTRICT 2

# of refugees: 7,501 ind.

Number of active WASH centres: 6

#female: 3 #Male: 3

% of WASH centres NOT meeting the minimum standards<sup>(1)</sup> on:

2 weeks ago

3 (100%)

4 (67%)

4 (67%)

5 (83%)

6 (100%)

0 (0%)

# of WASH centres following the minimum standards<sup>(1)</sup>:

This week: 1 (20%) - Two weeks ago: 0 (0%)

Number of WASH centres assessed: 5\*



### TOILETS

This week

2 weeks ago

# of functional toilets: 7 21

% of functional toilets: 30% 81%

Average # of individuals / functional toilet\*\*: 1072 357



### DOORS AND LOCKS

This week

2 weeks ago

# of centres with doors on 100% of stalls: 1 (20%) 2 (33%)

# of centres W/O at least 1 lockable toilet and shower stall: 4 (80%) 6 (100%)

% of female centres W/O at least 1 lockable toilet &amp; shower: 0% 33%

% of toilet stalls with lock: 13% 0%

% of shower stalls with lock: 9% 0%

# of female WASH centres with doors on 100% of stalls: 0 (0%) 1 (33%)



### LIGHTING

This week

2 weeks ago

# of WASH centres with int/ext lighting: 2 (40%) 1 (17%)

# of female WASH centres with int/ext lighting: 1 (50%) 0 (0%)



### ACCESS

This week

2 weeks ago

# of WASH centres locked: 1 0

# of toilet or shower stalls locked: 1 (4%) 1 (4%)

# of centres W/O unlocked stall for disable person: 5 6



### SANITARY WASTE DISPOSAL

This week

2 weeks ago

# of centres W/O disposal arrangements: 2 (100%) 3 (100%)  
(female centres only)


### CLEANLINESS OF FACILITIES

# of WASH centres considered clean and hygienic: 2 (40%) 2 (33%)



### WATER

This week

2 weeks ago

# of WASH centres without running water: 5 (100%) 6 (100%)

% of WASH centres with no internal or external taps: 60% 67%

Average # of taps per centre in/outside: 0.0/0.8 0.5/1.8

# of tap leaking in centres with running water in/outside: 0/0 0/0



### PRIVATE CONNECTIONS

This week

2 weeks ago

# of private connections to water tanks: 6 2

# of private connections to taps: 0 0

# of private connection to WASH centre septic tanks\*\*\*\*: 1 1



### SEWAGE & STAGNANT WATER

# septic tanks with visible signs of overflow: 0 (0%) 0 (0%)

# of centres W/O stagnant water inside or outside\*\*\*: 5 (100%) 6 (100%)

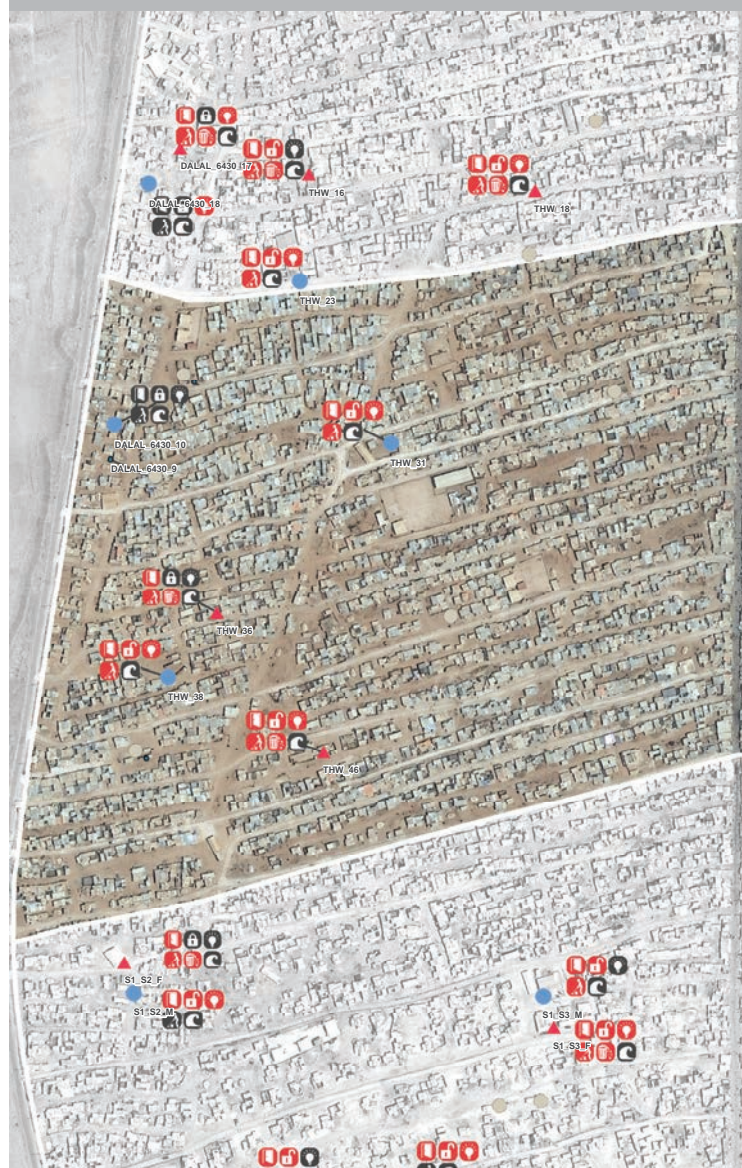
\* All active wash centres were assessed, except those that were locked and could not be accessed for the assessment

\*\* The minimum standard states that in communal facilities toilets should be available at a rate of one functional toilet per 50 people.

\*\*\* The minimum standard is that 80% of WASH centres have no stagnant water.

\*\*\*\* This includes both pipes connecting into and drains connecting close to septic tanks.

### DISTRICT 2: Compliance with minimum standards



### DISTRICT 2: Compliance with minimum standards

Complied on doors	Complied on locks	Complied on lighting	female WASH centre
Did not comply on doors	Did not comply on locks	Did not comply on lighting	
Complied on cleanliness	Complied on disposal arrangements	Septic tank not overflowing	Male WASH centre
Did not comply on cleanliness and hygiene	Did not comply on disposal arrangements	Septic tank overflowing	



# Al Za'atari Camp: FORTNIGHTLY WASH CENTRE MONITORING

## Al Za'atari Camp: DISTRICT 3

# of refugees: 5,822 ind.

Number of active WASH centres: 24

#female: 13 #Male: 11

% of WASH centres NOT meeting the minimum standards<sup>(1)</sup> on:

2 weeks ago

Disposal arrangements in female WASH centres: 4 (31%)	4 (31%)
Cleanliness and hygiene: 20 (100%)	16 (67%)
Cubicle doors: 17 (85%)	17 (85%)
Lighting: 17 (85%)	17 (71%)
Locks on cubicle doors: 12 (60%)	12 (50%)
Septic tank overflow: 0 (0%)	0 (0%)

# of WASH centres following the minimum standards<sup>(1)</sup>:

This week: 0 (0%) - Two weeks ago: 0 (0%)

Number of WASH centres assessed: 20\*



### TOILETS

This week 2 weeks ago

# of functional toilets:	76	84
% of functional toilets:	78%	89%

Average # of individuals / functional toilet**:	77	69
---	----	----



### DOORS AND LOCKS

This week 2 weeks ago

# of centres with doors on 100% of stalls:	3 (15%)	3 (15%)
# of centres W/O at least 1 lockable toilet and shower stall:	12 (60%)	12 (60%)
% of female centres W/O at least 1 lockable toilet & shower:	31%	85%
% of toilet stalls with lock:	46%	55%
% of shower stalls with lock:	30%	30%
# of female WASH centres with doors on 100% of stalls:	1 (9%)	2 (18%)



### LIGHTING

This week 2 weeks ago

# of WASH centres with int/ext lighting:	3 (15%)	3 (15%)
# of female WASH centres with int/ext lighting:	2 (18%)	3 (27%)



### ACCESS

This week 2 weeks ago

# of WASH centres locked:	4	4
# of toilet or shower stalls locked:	16 (16%)	12 (13%)
# of centres W/O unlocked stall for disable person:	16	20



### SANITARY WASTE DISPOSAL

This week 2 weeks ago

# of centres W/O disposal arrangements:	6 (55%)	6 (55%)
---	---------	---------



### CLEANLINESS OF FACILITIES

# of WASH centres considered clean and hygienic:	0 (0%)	4 (20%)
--	--------	---------



### WATER

This week 2 weeks ago

# of WASH centres without running water:	20 (100%)	20 (100%)
% of WASH centres with no internal or external taps:	75%	75%
Average # of taps per centre in/outside:	0.0/0.8	0.1/0.7
# of tap leaking in centres with running water in/outside:	0/0	0/0



### PRIVATE CONNECTIONS

This week 2 weeks ago

# of private connections to water tanks:	26	12
# of private connections to taps:	1	0
# of private connection to WASH centre septic tanks****:	2	1

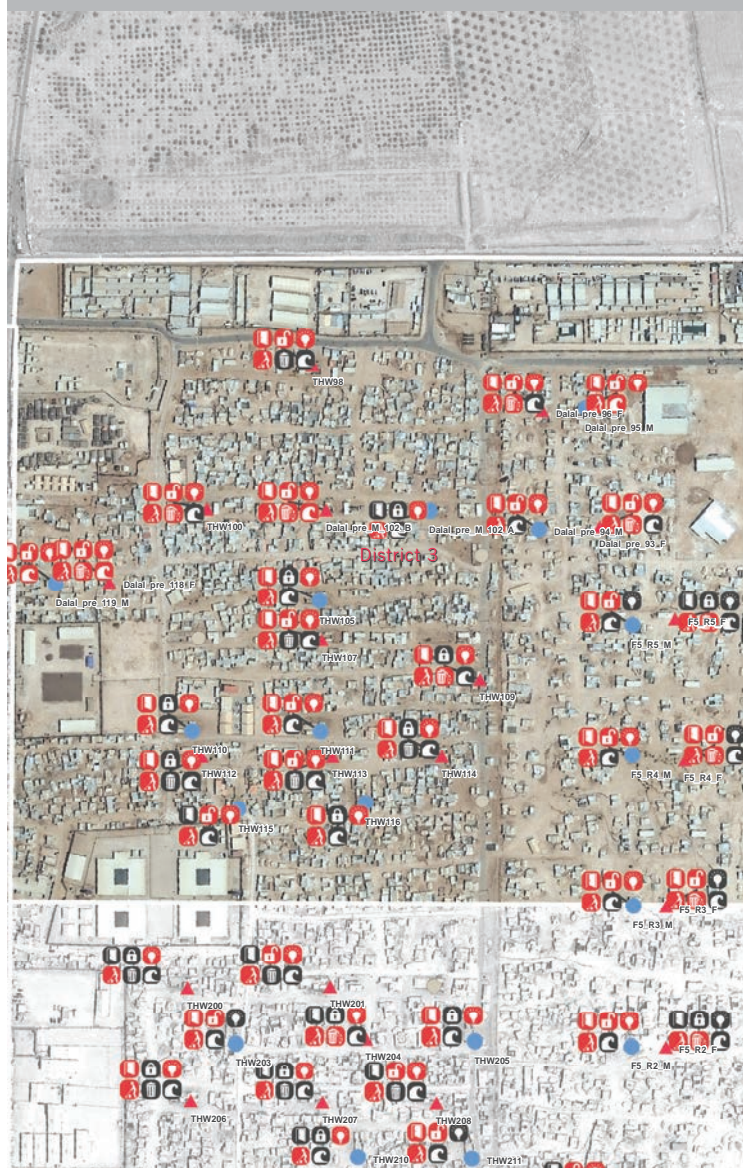


### SEWAGE & STAGNANT WATER

# septic tanks with visible signs of overflow:	0 (0%)	0 (0%)
# of centres W/O stagnant water inside or outside***:	12 (60%)	20 (100%)

\* All active wash centres were assessed, except those that were locked and could not be accessed for the assessment  
 \*\* The minimum standard states that in communal facilities toilets should be available at a rate of one functional toilet per 50 people.  
 \*\*\* The minimum standard is that 80% of WASH centres have no stagnant water.  
 \*\*\*\* This includes both pipes connecting into and drains connecting close to septic tanks.

### DISTRICT 3: Compliance with minimum standards



### DISTRICT 3: Compliance with minimum standards

Complied on doors	Complied on locks	Complied on lighting	female WASH centre
Did not comply on doors	Did not comply on locks	Did not comply on lighting	
Complied on cleanliness	Complied on disposal arrangements	Septic tank not overflowing	Male WASH centre
Did not comply on cleanliness and hygiene	Did not comply on disposal arrangements	Septic tank overflowing	



# Al Za'atari Camp: FORTNIGHTLY WASH CENTRE MONITORING

## Al Za'atari Camp: DISTRICT 4

# of refugees: 5,147 ind.

Number of active WASH centres: 22

#female: 12 #Male: 10

% of WASH centres NOT meeting the minimum standards<sup>(1)</sup> on:

2 weeks ago

4 (33%)

21 (95%)

13 (59%)

16 (73%)

9 (41%)

0 (0%)

# of WASH centres following the minimum standards<sup>(1)</sup>:

This week: 0 (0%) - Two weeks ago: 0 (0%)

Number of WASH centres assessed: 22\*

### TOILETS

This week

2 weeks ago

# of functional toilets: 84

90

% of functional toilets: 72%

79%

Average # of individuals / functional toilet\*\*: 61

57

### DOORS AND LOCKS

This week

2 weeks ago

# of centres with doors on 100% of stalls: 9 (41%)

9 (41%)

# of centres W/O at least 1 lockable toilet and shower stall: 10 (45%)

9 (41%)

% of female centres W/O at least 1 lockable toilet &amp; shower: 67%

33%

% of toilet stalls with lock: 34%

54%

% of shower stalls with lock: 35%

46%

# of female WASH centres with doors on 100% of stalls: 7 (58%)

7 (58%)

### LIGHTING

This week

2 weeks ago

# of WASH centres with int/ext lighting: 6 (27%)

6 (27%)

# of female WASH centres with int/ext lighting: 3 (25%)

3 (25%)

### ACCESS

This week

2 weeks ago

# of WASH centres locked: 0

0

# of toilet or shower stalls locked: 17 (15%)

16 (14%)

# of centres W/O unlocked stall for disable person: 21

22

### SANITARY WASTE DISPOSAL

This week

2 weeks ago

# of centres W/O disposal arrangements: 4 (33%)  
(female centres only)

4 (33%)

### CLEANLINESS OF FACILITIES

# of WASH centres considered clean and hygienic: 0 (0%)

1 (5%)

### WATER

This week

2 weeks ago

# of WASH centres without running water: 18 (82%)

22 (100%)

% of WASH centres with no internal or external taps: 64%

50%

Average # of taps per centre in/outside: 0.3/0.3

0.1/0.9

# of tap leaking in centres with running water in/outside: 0/4

0/0

### PRIVATE CONNECTIONS

This week

2 weeks ago

# of private connections to water tanks: 24

9

# of private connections to taps: 0

3

# of private connection to WASH centre septic tanks\*\*\*\*: 8

10

### SEWAGE & STAGNANT WATER

# septic tanks with visible signs of overflow: 0 (0%)

0 (0%)

# of centres W/O stagnant water inside or outside\*\*\*: 11 (50%)

20 (91%)

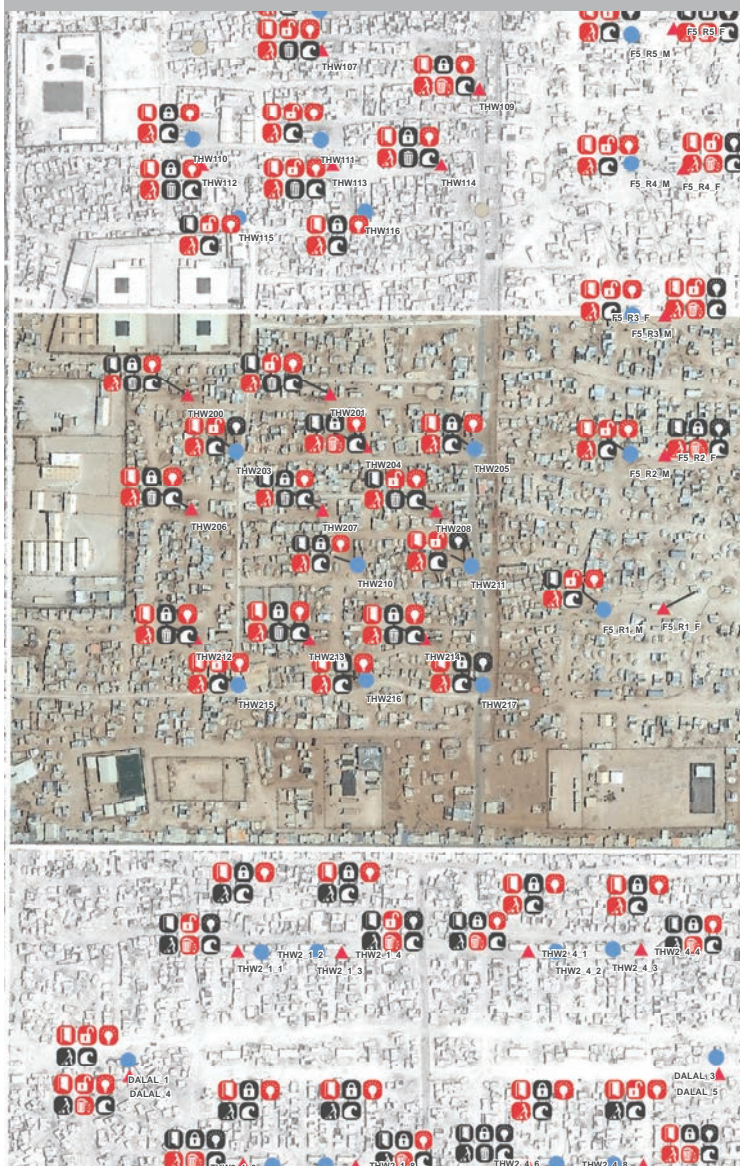
\* All active wash centres were assessed, except those that were locked and could not be accessed for the assessment

\*\* The minimum standard states that in communal facilities toilets should be available at a rate of one functional toilet per 50 people.

\*\*\* The minimum standard is that 80% of WASH centres have no stagnant water.

\*\*\*\* This includes both pipes connecting into and drains connecting close to septic tanks.

### DISTRICT 4: Compliance with minimum standards



### DISTRICT 4: Compliance with minimum standards





# Al Za'atari Camp: FORTNIGHTLY WASH CENTRE MONITORING

## Al Za'atari Camp: DISTRICT 5

# of refugees: 6,781 ind.

Number of active WASH centres: 20

#female: 10 #Male: 10

% of WASH centres NOT meeting the minimum standards<sup>(1)</sup> on:

2 weeks ago

10 (100%)

20 (100%)

14 (70%)

10 (50%)

11 (55%)

0 (0%)

# of WASH centres following the minimum standards<sup>(1)</sup>:

This week: 0 (0%) - Two weeks ago: 0 (0%)

Number of WASH centres assessed: 20\*

### TOILETS

This week 2 weeks ago

# of functional toilets: 103 98

% of functional toilets: 90% 84%

Average # of individuals / functional toilet\*\*: 66 69

### DOORS AND LOCKS

This week 2 weeks ago

# of centres with doors on 100% of stalls: 5 (25%) 6 (30%)

# of centres W/O at least 1 lockable toilet and shower stall: 19 (95%) 11 (55%)

% of female centres W/O at least 1 lockable toilet &amp; shower: 10% 80%

% of toilet stalls with lock: 8% 23%

% of shower stalls with lock: 2% 32%

# of female WASH centres with doors on 100% of stalls: 4 (40%) 5 (50%)

### LIGHTING

This week 2 weeks ago

# of WASH centres with int/ext lighting: 10 (50%) 10 (50%)

# of female WASH centres with int/ext lighting: 10 (100%) 10 (100%)

### ACCESS

This week 2 weeks ago

# of WASH centres locked: 0 0

# of toilet or shower stalls locked: 22 (19%) 26 (22%)

# of centres W/O unlocked stall for disable person: 19 16

### SANITARY WASTE DISPOSAL

This week 2 weeks ago

# of centres W/O disposal arrangements: 10 (100%) 10 (100%)  
(female centres only)

### CLEANLINESS OF FACILITIES

# of WASH centres considered clean and hygienic: 10 (50%) 0 (0%)

### WATER

This week 2 weeks ago

# of WASH centres without running water: 17 (85%) 13 (65%)

% of WASH centres with no internal or external taps: 60% 60%

Average # of taps per centre in/outside: 0.1/1.0 0.1/1.3

# of tap leaking in centres with running water in/outside: 0/0 3/0

### PRIVATE CONNECTIONS

This week 2 weeks ago

# of private connections to water tanks: 16 32

# of private connections to taps: 5 10

# of private connection to WASH centre septic tanks\*\*\*\*: 4 3

### SEWAGE & STAGNANT WATER

# septic tanks with visible signs of overflow: 0 (0%) 0 (0%)

# of centres W/O stagnant water inside or outside\*\*\*: 13 (65%) 6 (30%)

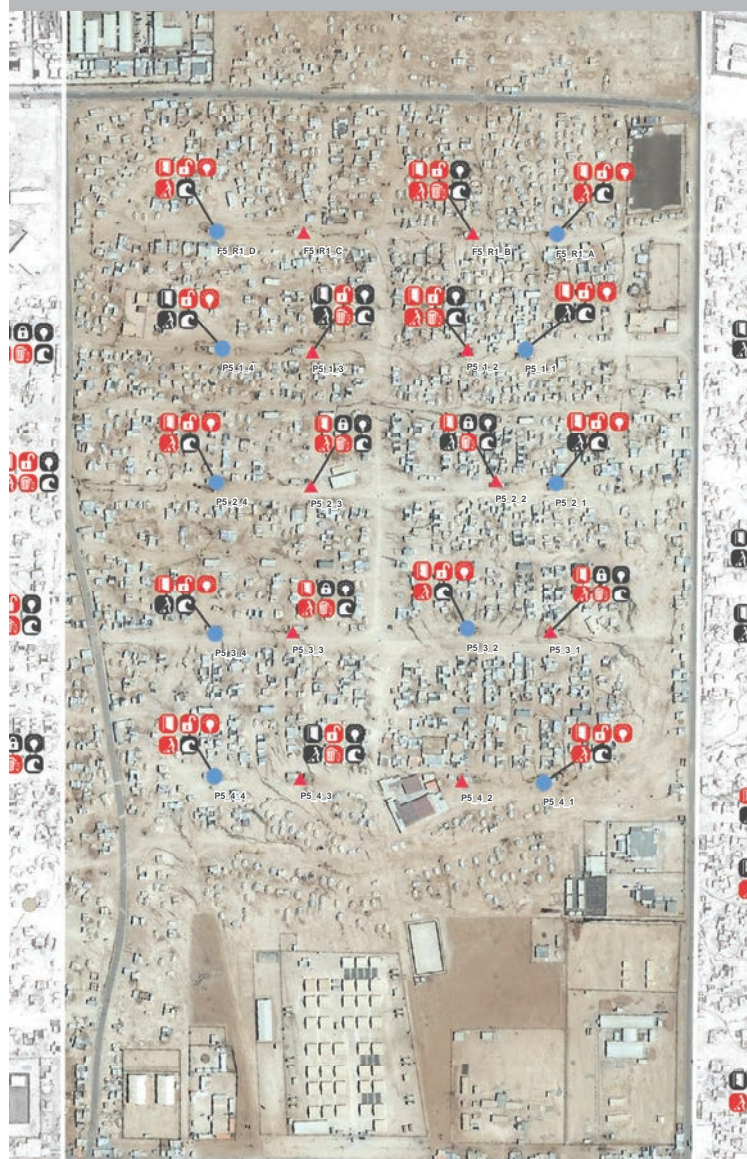
\* All active wash centres were assessed, except those that were locked and could not be accessed for the assessment

\*\* The minimum standard states that in communal facilities toilets should be available at a rate of one functional toilet per 50 people.

\*\*\* The minimum standard is that 80% of WASH centres have no stagnant water.

\*\*\*\* This includes both pipes connecting into and drains connecting close to septic tanks.

### DISTRICT 5: Compliance with minimum standards



### DISTRICT 5: Compliance with minimum standards

Complied on doors	Complied on locks	Complied on lighting	female WASH centre
Did not comply on doors	Did not comply on locks	Did not comply on lighting	
Complied on cleanliness	Complied on disposal arrangements	Septic tank not overflowing	Male WASH centre
Did not comply on cleanliness and hygiene	Did not comply on disposal arrangements	Septic tank overflowing	



# Al Za'atari Camp: FORTNIGHTLY WASH CENTRE MONITORING

## Al Za'atari Camp: DISTRICT 6

# of refugees: 7,975 ind.

Number of active WASH centres: 50

#female: 25 #Male: 25

% of WASH centres NOT meeting the minimum standards<sup>(1)</sup> on:

2 weeks ago

25 (100%)

27 (54%)

10 (20%)

3 (6%)

10 (20%)

0 (0%)

# of WASH centres following the minimum standards<sup>(1)</sup>:

This week: 5 (10%) - Two weeks ago: 5 (10%)

Number of WASH centres assessed: 50\*



### TOILETS

This week

2 weeks ago

# of functional toilets: 259

259

% of functional toilets: 92%

88%

Average # of individuals / functional toilet\*\*: 31

31



### DOORS AND LOCKS

This week

2 weeks ago

# of centres with doors on 100% of stalls: 37 (74%)

40 (80%)

# of centres W/O at least 1 lockable toilet and shower stall: 15 (30%)

10 (20%)

% of female centres W/O at least 1 lockable toilet &amp; shower: 76%

88%

% of toilet stalls with lock: 84%

90%

% of shower stalls with lock: 79%

86%

# of female WASH centres with doors on 100% of stalls: 21 (84%)

23 (92%)



### LIGHTING

This week

2 weeks ago

# of WASH centres with int/ext lighting: 48 (96%)

47 (94%)

# of female WASH centres with int/ext lighting: 25 (100%)

25 (100%)



### ACCESS

This week

2 weeks ago

# of WASH centres locked: 0

0

# of toilet or shower stalls locked: 167 (59%)

159 (54%)

# of centres W/O unlocked stall for disable person: 21

18



### SANITARY WASTE DISPOSAL

This week

2 weeks ago

# of centres W/O disposal arrangements: 25 (100%)

25 (100%)

(female centres only)



### CLEANLINESS OF FACILITIES

# of WASH centres considered clean and hygienic: 28 (56%)

23 (46%)



### WATER

This week

2 weeks ago

# of WASH centres without running water: 46 (92%)

47 (94%)

% of WASH centres with no internal or external taps: 22%

20%

Average # of taps per centre in/outside: 1.6/0.5

1.9/0.4

# of tap leaking in centres with running water in/outside: 1/1

0/0



### PRIVATE CONNECTIONS

This week

2 weeks ago

# of private connections to water tanks: 0

0

# of private connections to taps: 31

29

# of private connection to WASH centre septic tanks\*\*\*\*: 7

9



### SEWAGE & STAGNANT WATER

# septic tanks with visible signs of overflow: 0 (0%)

0 (0%)

# of centres W/O stagnant water inside or outside\*\*\*: 41 (82%)

31 (62%)

\* All active wash centres were assessed, except those that were locked and could not be accessed for the assessment

\*\* The minimum standard states that in communal facilities toilets should be available at a rate of one functional toilet per 50 people.

\*\*\* The minimum standard is that 80% of WASH centres have no stagnant water.

\*\*\*\* This includes both pipes connecting into and drains connecting close to septic tanks.

### DISTRICT 6: Compliance with minimum standards



### DISTRICT 6: Compliance with minimum standards

Complied on doors	Complied on locks	Complied on lighting	female WASH centre
Did not comply on doors	Did not comply on locks	Did not comply on lighting	
Complied on cleanliness	Complied on disposal arrangements	Septic tank not overflowing	Male WASH centre
Did not comply on cleanliness and hygiene	Did not comply on disposal arrangements	Septic tank overflowing	



# Al Za'atari Camp: FORTNIGHTLY WASH CENTRE MONITORING

## Al Za'atari Camp: DISTRICT 7

# of refugees: 7,676 ind.

Number of active WASH centres: 34

#female: 17 #Male: 17

% of WASH centres NOT meeting the minimum standards<sup>(1)</sup> on:

2 weeks ago

Disposal arrangements in female WASH centres: 17 (100%)

Cleanliness and hygiene: 22 (65%)

Cubicle doors: 22 (65%)

Lighting: 18 (53%)

Locks on cubicle doors: 20 (59%)

Septic tank overflow: 0 (0%)

13 (76%)

30 (88%)

19 (56%)

17 (50%)

17 (50%)

0 (0%)

# of WASH centres following the minimum standards<sup>(1)</sup>:

This week: 0 (0%) - Two weeks ago: 0 (0%)

Number of WASH centres assessed: 34\*

### TOILETS

This week

2 weeks ago

# of functional toilets: 169

181

% of functional toilets: 82%

86%

Average # of individuals / functional toilet\*\*: 45

42

### DOORS AND LOCKS

This week

2 weeks ago

# of centres with doors on 100% of stalls: 12 (35%)

15 (44%)

# of centres W/O at least 1 lockable toilet and shower stall: 20 (59%)

17 (50%)

% of female centres W/O at least 1 lockable toilet &amp; shower: 82%

82%

% of toilet stalls with lock: 21%

50%

% of shower stalls with lock: 32%

47%

# of female WASH centres with doors on 100% of stalls: 9 (53%)

12 (71%)

### LIGHTING

This week

2 weeks ago

# of WASH centres with int/ext lighting: 16 (47%)

17 (50%)

# of female WASH centres with int/ext lighting: 16 (94%)

17 (100%)

### ACCESS

This week

2 weeks ago

# of WASH centres locked: 0

0

# of toilet or shower stalls locked: 31 (15%)

39 (19%)

# of centres W/O unlocked stall for disable person: 30

28

### SANITARY WASTE DISPOSAL

This week

2 weeks ago

# of centres W/O disposal arrangements: 17 (100%)

13 (76%)

(female centres only)

### CLEANLINESS OF FACILITIES

# of WASH centres considered clean and hygienic: 12 (35%)

4 (12%)

### WATER

This week

2 weeks ago

# of WASH centres without running water: 23 (68%)

29 (85%)

% of WASH centres with no internal or external taps: 6%

12%

Average # of taps per centre in/outside: 0.9/1.3

0.8/1.3

# of tap leaking in centres with running water in/outside: 3/0

2/0

### PRIVATE CONNECTIONS

This week

2 weeks ago

# of private connections to water tanks: 3

5

# of private connections to taps: 0

1

# of private connection to WASH centre septic tanks\*\*\*\*: 1

2

### SEWAGE & STAGNANT WATER

# septic tanks with visible signs of overflow: 0 (0%)

0 (0%)

# of centres W/O stagnant water inside or outside\*\*\*: 18 (53%)

28 (82%)

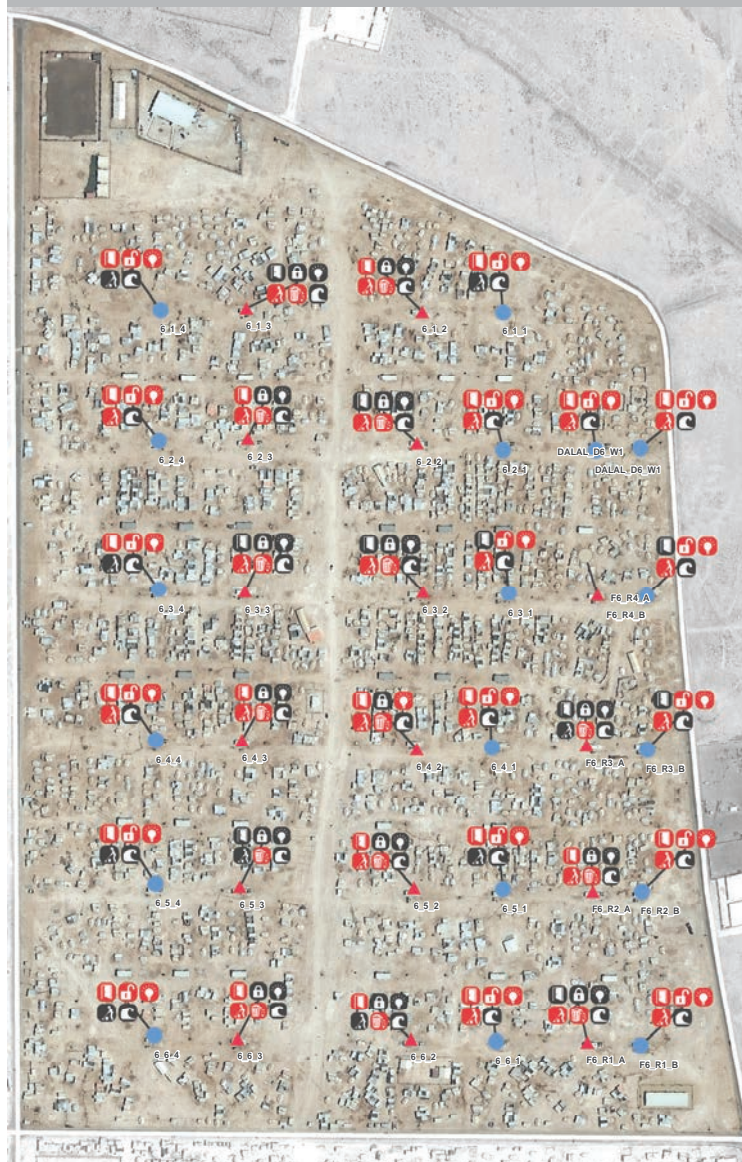
\* All active wash centres were assessed, except those that were locked and could not be accessed for the assessment

\*\* The minimum standard states that in communal facilities toilets should be available at a rate of one functional toilet per 50 people.

\*\*\* The minimum standard is that 80% of WASH centres have no stagnant water.

\*\*\*\* This includes both pipes connecting into and drains connecting close to septic tanks.

### DISTRICT 7: Compliance with minimum standards



### DISTRICT 7: Compliance with minimum standards

Complied on doors	Complied on locks	Complied on lighting	female WASH centre
Did not comply on doors	Did not comply on locks	Did not comply on lighting	
Complied on cleanliness	Complied on disposal arrangements	Septic tank not overflowing	Male WASH centre
Did not comply on cleanliness and hygiene	Did not comply on disposal arrangements	Septic tank overflowing	



# Al Za'atari Camp: FORTNIGHTLY WASH CENTRE MONITORING

## Al Za'atari Camp: DISTRICT 8

# of refugees: **9,086 ind.**

Number of active WASH centres: **36**

#female: 19 #Male: 17

% of WASH centres NOT meeting the minimum standards<sup>(1)</sup> on:

2 weeks ago

Disposal arrangements in female WASH centres: **18 (95%)**

18 (95%)

Cleanliness and hygiene: **15 (43%)**

22 (61%)

Cubicle doors: **15 (43%)**

15 (43%)

Lighting: **26 (74%)**

27 (75%)

Locks on cubicle doors: **23 (66%)**

23 (64%)

Septic tank overflow: **0 (0%)**

0 (0%)

# of WASH centres following the minimum standards<sup>(1)</sup>:

This week: **0 (0%)** - Two weeks ago: **0 (0%)**

Number of WASH centres assessed: **35\***


### TOILETS

This week 2 weeks ago

# of functional toilets: **177** 175

% of functional toilets: **97%** 94%

Average # of individuals / functional toilet<sup>\*\*</sup>: **51** 52


### DOORS AND LOCKS

This week 2 weeks ago

# of centres with doors on 100% of stalls: **20 (57%)** 20 (57%)

# of centres W/O at least 1 lockable toilet and shower stall: **23 (66%)** 23 (66%)

% of female centres W/O at least 1 lockable toilet & shower: **42%** 79%

% of toilet stalls with lock: **49%** 45%

% of shower stalls with lock: **13%** 13%

# of female WASH centres with doors on 100% of stalls: **13 (68%)** 13 (68%)


### LIGHTING

This week 2 weeks ago

# of WASH centres with int/ext lighting: **9 (26%)** 8 (23%)

# of female WASH centres with int/ext lighting: **9 (47%)** 8 (42%)


### ACCESS

This week 2 weeks ago

# of WASH centres locked: **1** 1

# of toilet or shower stalls locked: **16 (9%)** 15 (8%)

# of centres W/O unlocked stall for disable person: **28** 31


### SANITARY WASTE DISPOSAL

This week 2 weeks ago

# of centres W/O disposal arrangements: **19 (100%)** 19 (100%)  
(female centres only)


### CLEANLINESS OF FACILITIES

# of WASH centres considered clean and hygienic: **20 (57%)** 13 (37%)


### WATER

This week 2 weeks ago

# of WASH centres without running water: **25 (71%)** 26 (74%)

% of WASH centres with no internal or external taps: **11%** 11%

Average # of taps per centre in/outside: **0.4/1.2** 0.4/1.2

# of tap leaking in centres with running water in/outside: **0/0** 0/0


### PRIVATE CONNECTIONS

This week 2 weeks ago

# of private connections to water tanks: **1** 0

# of private connections to taps: **0** 0

# of private connection to WASH centre septic tanks<sup>\*\*\*\*</sup>: **2** 2


### SEWAGE & STAGNANT WATER

# septic tanks with visible signs of overflow: **0 (0%)** 0 (0%)

# of centres W/O stagnant water inside or outside<sup>\*\*\*</sup>: **33 (94%)** 34 (97%)

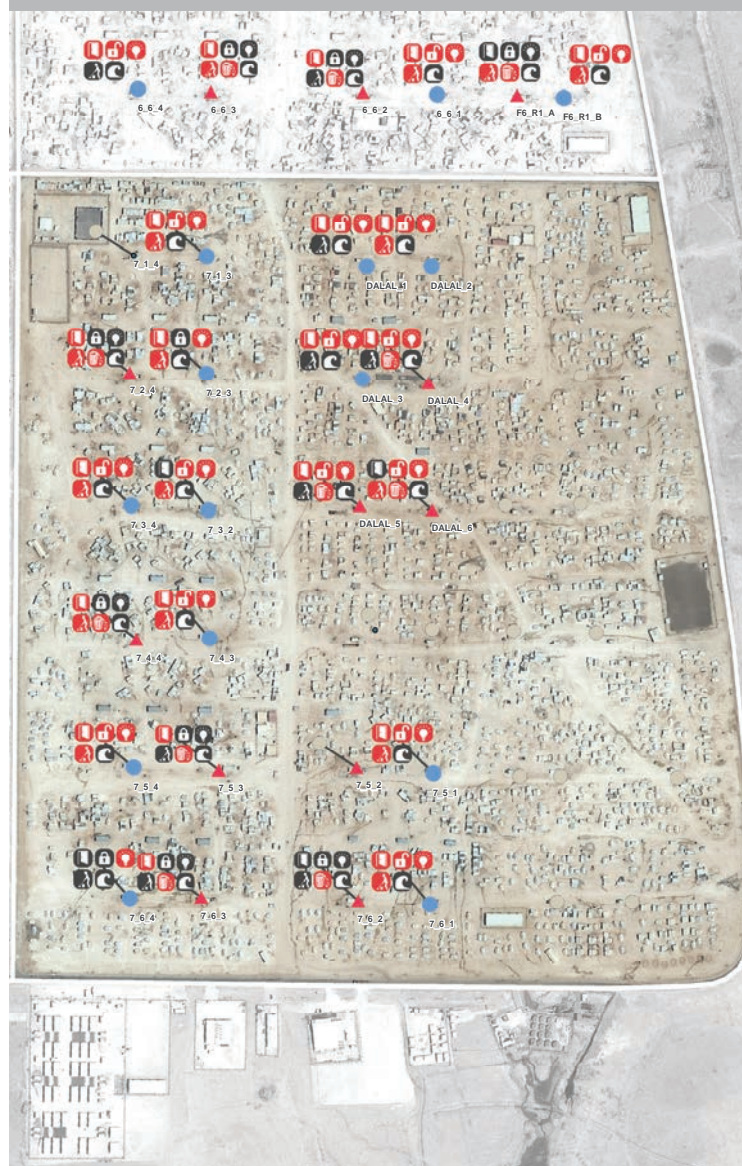
\* All active wash centres were assessed, except those that were locked and could not be accessed for the assessment

\*\* The minimum standard states that in communal facilities toilets should be available at a rate of one functional toilet per 50 people.

\*\*\* The minimum standard is that 80% of WASH centres have no stagnant water.

\*\*\*\* This includes both pipes connecting into and drains connecting close to septic tanks.

### DISTRICT 8: Compliance with minimum standards



### DISTRICT 8: Compliance with minimum standards

Complied on doors	Complied on locks	Complied on lighting	female WASH centre
Did not comply on doors	Did not comply on locks	Did not comply on lighting	
Complied on cleanliness	Complied on disposal arrangements	Septic tank not overflowing	Male WASH centre
Did not comply on cleanliness and hygiene	Did not comply on disposal arrangements	Septic tank overflowing	



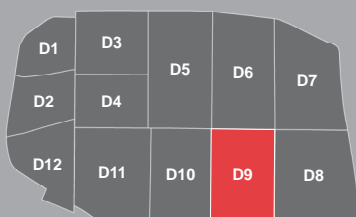
# Al Za'atari Camp: FORTNIGHTLY WASH CENTRE MONITORING

## Al Za'atari Camp: DISTRICT 9

# of refugees: 5,429 ind.

Number of active WASH centres: 48

#female: 24 #Male: 24


# of WASH centres following the minimum standards<sup>(1)</sup>:

This week: 3 (7%) - Two weeks ago: 3 (6%)

% of WASH centres NOT meeting the minimum standards<sup>(1)</sup> on:

2 weeks ago

Disposal arrangements in female WASH centres: <b>21 (88%)</b>	22 (92%)
Cleanliness and hygiene: <b>34 (74%)</b>	30 (63%)
Cubicle doors: <b>14 (30%)</b>	20 (43%)
Lighting: <b>37 (80%)</b>	39 (81%)
Locks on cubicle doors: <b>2 (4%)</b>	2 (4%)
Septic tank overflow: <b>0 (0%)</b>	1 (2%)

Number of WASH centres assessed: 46\*



### TOILETS

This week 2 weeks ago

# of functional toilets: **266** 264

% of functional toilets: **94%** 91%

Average # of individuals / functional toilet\*\*: **20** 21


### DOORS AND LOCKS

This week 2 weeks ago

# of centres with doors on 100% of stalls: **32 (70%)** 27 (57%)

# of centres W/O at least 1 lockable toilet and shower stall: **2 (4%)** 2 (4%)

% of female centres W/O at least 1 lockable toilet & shower: **92%** 79%

% of toilet stalls with lock: **85%** 87%

% of shower stalls with lock: **77%** 77%

# of female WASH centres with doors on 100% of stalls: **18 (82%)** 15 (65%)


### LIGHTING

This week 2 weeks ago

# of WASH centres with int/ext lighting: **9 (20%)** 8 (17%)

# of female WASH centres with int/ext lighting: **6 (27%)** 5 (22%)


### ACCESS

This week 2 weeks ago

# of WASH centres locked: **2** 1

# of toilet or shower stalls locked: **66 (23%)** 72 (25%)

# of centres W/O unlocked stall for disable person: **6** 10


### SANITARY WASTE DISPOSAL

This week 2 weeks ago

# of centres W/O disposal arrangements: **21 (95%)** 22 (96%)  
(female centres only)


### CLEANLINESS OF FACILITIES

# of WASH centres considered clean and hygienic: **12 (26%)** 17 (36%)


### WATER

This week 2 weeks ago

# of WASH centres without running water: **39 (85%)** 30 (64%)

% of WASH centres with no internal or external taps: **20%** 26%

Average # of taps per centre in/outside: **0.1/2.3** 0.2/2.2

# of tap leaking in centres with running water in/outside: **5/0** 9/0


### PRIVATE CONNECTIONS

This week 2 weeks ago

# of private connections to water tanks: **17** 25

# of private connections to taps: **18** 29

# of private connection to WASH centre septic tanks\*\*\*\*: **4** 5


### SEWAGE & STAGNANT WATER

# septic tanks with visible signs of overflow: **0 (0%)** 1 (8%)

# of centres W/O stagnant water inside or outside\*\*\*: **35 (76%)** 40 (85%)

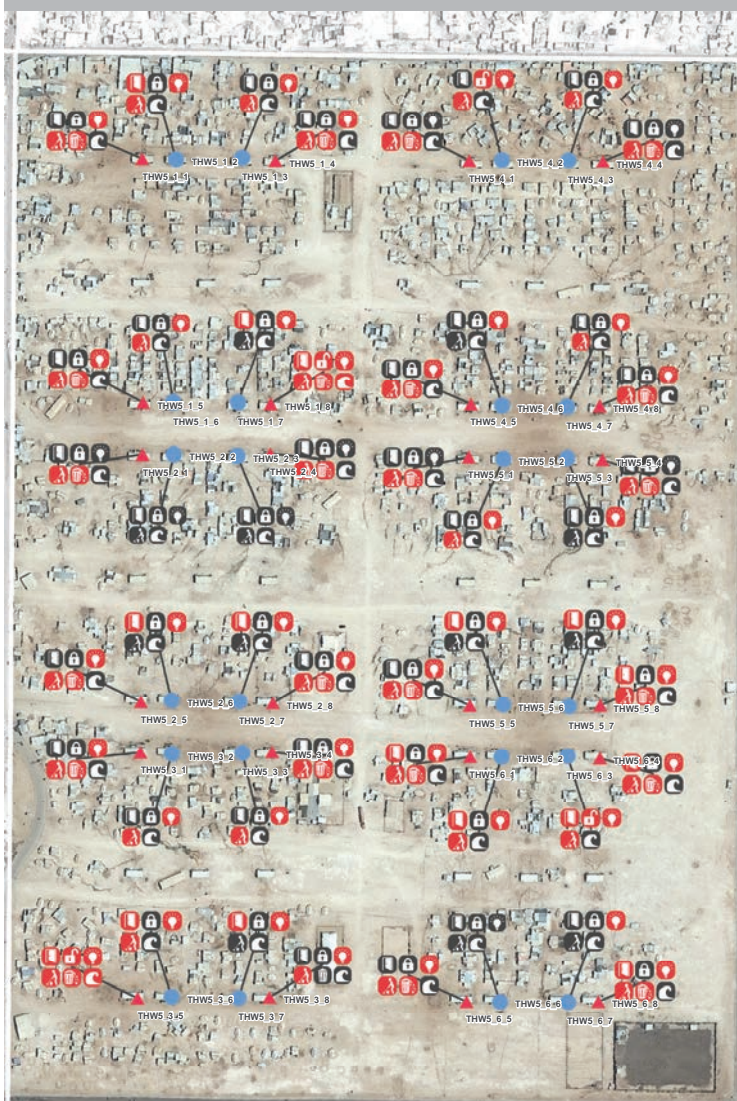
\* All active wash centres were assessed, except those that were locked and could not be accessed for the assessment

\*\* The minimum standard states that in communal facilities toilets should be available at a rate of one functional toilet per 50 people.

\*\*\* The minimum standard is that 80% of WASH centres have no stagnant water.

\*\*\*\* This includes both pipes connecting into and drains connecting close to septic tanks.

### DISTRICT 9: Compliance with minimum standards



### DISTRICT 9: Compliance with minimum standards

Complied on doors	Complied on locks	Complied on lighting	female WASH centre
Did not comply on doors	Did not comply on locks	Did not comply on lighting	
Complied on cleanliness	Complied on disposal arrangements	Septic tank not overflowing	Male WASH centre
Did not comply on cleanliness and hygiene	Did not comply on disposal arrangements	Septic tank overflowing	



# Al Za'atari Camp: FORTNIGHTLY WASH CENTRE MONITORING

## Al Za'atari Camp: DISTRICT 10

# of refugees: 7,325 ind.

Number of active WASH centres: 48

#female: 24 #Male: 24

% of WASH centres NOT meeting the minimum standards<sup>(1)</sup> on:

2 weeks ago

23 (96%)

28 (58%)

31 (65%)

17 (35%)

17 (35%)

0 (0%)

# of WASH centres following the minimum standards<sup>(1)</sup>:

This week: 2 (4%) - Two weeks ago: 1 (2%)

Number of WASH centres assessed: 48\*



### TOILETS

This week

2 weeks ago

# of functional toilets: 276

281

% of functional toilets: 93%

95%

Average # of individuals / functional toilet\*\*: 27

26



### DOORS AND LOCKS

This week

2 weeks ago

# of centres with doors on 100% of stalls: 12 (25%)

17 (35%)

# of centres W/O at least 1 lockable toilet and shower stall: 15 (31%)

17 (35%)

% of female centres W/O at least 1 lockable toilet &amp; shower: 79%

71%

% of toilet stalls with lock: 69%

69%

% of shower stalls with lock: 40%

44%

# of female WASH centres with doors on 100% of stalls: 9 (38%)

14 (58%)



### LIGHTING

This week

2 weeks ago

# of WASH centres with int/ext lighting: 29 (60%)

31 (65%)

# of female WASH centres with int/ext lighting: 22 (92%)

21 (88%)



### ACCESS

This week

2 weeks ago

# of WASH centres locked: 0

0

# of toilet or shower stalls locked: 89 (30%)

92 (31%)

# of centres W/O unlocked stall for disable person: 7

7



### SANITARY WASTE DISPOSAL

This week

2 weeks ago

# of centres W/O disposal arrangements: 24 (100%)  
(female centres only)

23 (96%)



### CLEANLINESS OF FACILITIES

# of WASH centres considered clean and hygienic: 6 (13%)

20 (42%)



### WATER

This week

2 weeks ago

# of WASH centres without running water: 35 (73%)

43 (90%)

% of WASH centres with no internal or external taps: 40%

42%

Average # of taps per centre in/outside: 0.2/1.7

0.5/1.1

# of tap leaking in centres with running water in/outside: 11/4

0/0



### PRIVATE CONNECTIONS

This week

2 weeks ago

# of private connections to water tanks: 18

18

# of private connections to taps: 29

21

# of private connection to WASH centre septic tanks\*\*\*\*: 18

24



### SEWAGE & STAGNANT WATER

# septic tanks with visible signs of overflow: 0 (0%)

0 (0%)

# of centres W/O stagnant water inside or outside\*\*\*: 36 (75%)

30 (63%)

\* All active wash centres were assessed, except those that were locked and could not be accessed for the assessment

\*\* The minimum standard states that in communal facilities toilets should be available at a rate of one functional toilet per 50 people.

\*\*\* The minimum standard is that 80% of WASH centres have no stagnant water.

\*\*\*\* This includes both pipes connecting into and drains connecting close to septic tanks.

### DISTRICT 10: Compliance with minimum standards



### DISTRICT 10: Compliance with minimum standards





# Al Za'atari Camp: FORTNIGHTLY WASH CENTRE MONITORING

## Al Za'atari Camp: DISTRICT 11

# of refugees: 9,663 ind.

Number of active WASH centres: 54

#female: 27 #Male: 27

# of WASH centres following the minimum standards<sup>(1)</sup>:

This week: 1 (2%) - Two weeks ago: 0 (0%)

% of WASH centres NOT meeting the minimum standards<sup>(1)</sup> on:

2 weeks ago

Disposal arrangements in female WASH centres: <b>25 (93%)</b>	26 (96%)
Cleanliness and hygiene: <b>24 (44%)</b>	44 (81%)
Cubicle doors: <b>34 (63%)</b>	37 (70%)
Lighting: <b>31 (57%)</b>	28 (52%)
Locks on cubicle doors: <b>12 (22%)</b>	19 (35%)
Septic tank overflow: <b>0 (0%)</b>	0 (0%)

Number of WASH centres assessed: 54\*



### TOILETS

This week 2 weeks ago

# of functional toilets: **310** 299

% of functional toilets: **95%** 92%

Average # of individuals / functional toilet\*\*: **31** 32


### DOORS AND LOCKS

This week 2 weeks ago

# of centres with doors on 100% of stalls: **20 (37%)** 16 (30%)

# of centres W/O at least 1 lockable toilet and shower stall: **12 (22%)** 19 (36%)

% of female centres W/O at least 1 lockable toilet & shower: **78%** 63%

% of toilet stalls with lock: **75%** 67%

% of shower stalls with lock: **57%** 43%

# of female WASH centres with doors on 100% of stalls: **19 (70%)** 15 (58%)


### LIGHTING

This week 2 weeks ago

# of WASH centres with int/ext lighting: **23 (43%)** 25 (47%)

# of female WASH centres with int/ext lighting: **19 (70%)** 18 (69%)


### ACCESS

This week 2 weeks ago

# of WASH centres locked: **0** 1

# of toilet or shower stalls locked: **87 (27%)** 104 (32%)

# of centres W/O unlocked stall for disable person: **7** 8


### SANITARY WASTE DISPOSAL

This week 2 weeks ago

# of centres W/O disposal arrangements: **25 (93%)** 26 (100%)  
(female centres only)


### CLEANLINESS OF FACILITIES

# of WASH centres considered clean and hygienic: **30 (56%)** 9 (17%)


### WATER

This week 2 weeks ago

# of WASH centres without running water: **47 (87%)** 47 (89%)

% of WASH centres with no internal or external taps: **44%** 51%

Average # of taps per centre in/outside: **0.2/1.2** 0.1/1.4

# of tap leaking in centres with running water in/outside: **1/0** 2/1


### PRIVATE CONNECTIONS

This week 2 weeks ago

# of private connections to water tanks: **26** 20

# of private connections to taps: **16** 6

# of private connection to WASH centre septic tanks\*\*\*\*: **8** 5


### SEWAGE & STAGNANT WATER

# septic tanks with visible signs of overflow: **0 (0%)** 0 (0%)

# of centres W/O stagnant water inside or outside\*\*\*: **37 (69%)** 41 (77%)

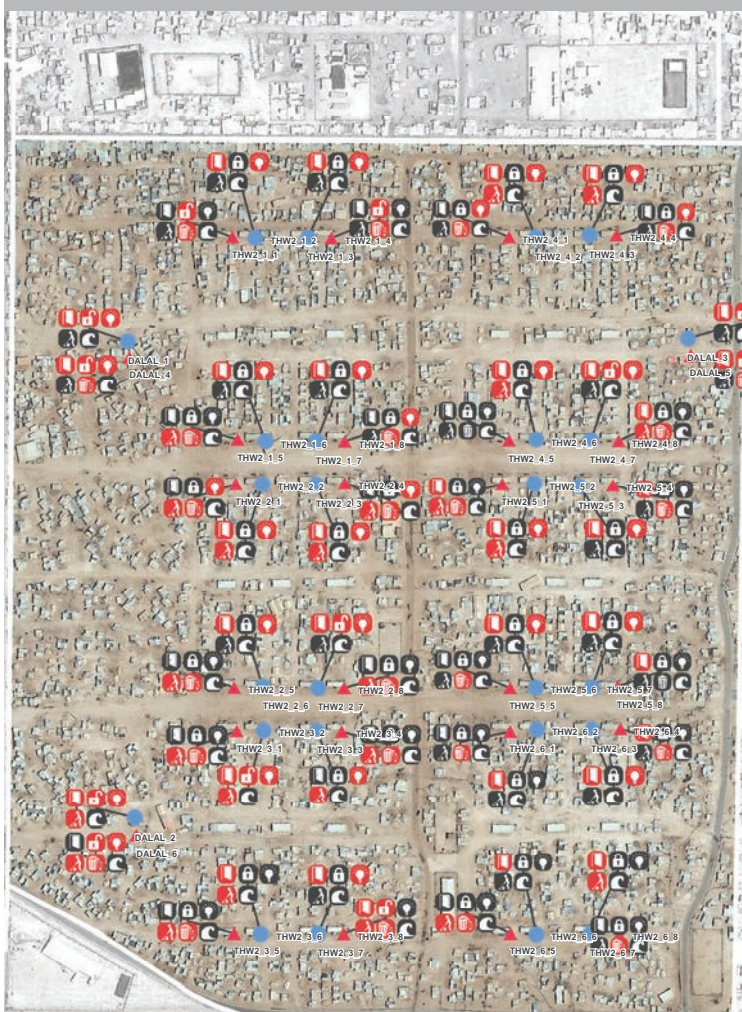
\* All active wash centres were assessed, except those that were locked and could not be accessed for the assessment

\*\* The minimum standard states that in communal facilities toilets should be available at a rate of one functional toilet per 50 people.

\*\*\* The minimum standard is that 80% of WASH centres have no stagnant water.

\*\*\*\* This includes both pipes connecting into and drains connecting close to septic tanks.

### DISTRICT 11: Compliance with minimum standards



### DISTRICT 11: Compliance with minimum standards

Complied on doors	Complied on locks	Complied on lighting	female WASH centre
Did not comply on doors	Did not comply on locks	Did not comply on lighting	
Complied on cleanliness	Complied on disposal arrangements	Septic tank not overflowing	Male WASH centre
Did not comply on cleanliness and hygiene	Did not comply on disposal arrangements	Septic tank overflowing	



# Al Za'atari Camp: FORTNIGHTLY WASH CENTRE MONITORING

## Al Za'atari Camp: DISTRICT 12

# of refugees: 6,576 ind.

Number of active WASH centres: 14

#female: 7 #Male: 7

% of WASH centres NOT meeting the minimum standards<sup>(1)</sup> on:

2 weeks ago

7 (100%)

11 (79%)

10 (71%)

8 (57%)

14 (100%)

0 (0%)

# of WASH centres following the minimum standards<sup>(1)</sup>:

This week: 0 (0%) - Two weeks ago: 0 (0%)

Number of WASH centres assessed: 14\*



### TOILETS

This week 2 weeks ago

# of functional toilets: 72 62

% of functional toilets: 97% 85%

Average # of individuals / functional toilet\*\*: 91 106



### DOORS AND LOCKS

This week 2 weeks ago

# of centres with doors on 100% of stalls: 3 (21%) 4 (29%)

# of centres W/O at least 1 lockable toilet and shower stall: 12 (86%) 14 (100%)

% of female centres W/O at least 1 lockable toilet &amp; shower: 14% 57%

% of toilet stalls with lock: 23% 1%

% of shower stalls with lock: 3% 2%

# of female WASH centres with doors on 100% of stalls: 2 (29%) 3 (43%)



### LIGHTING

This week 2 weeks ago

# of WASH centres with int/ext lighting: 6 (43%) 6 (43%)

# of female WASH centres with int/ext lighting: 4 (57%) 4 (57%)



### ACCESS

This week 2 weeks ago

# of WASH centres locked: 0 0

# of toilet or shower stalls locked: 10 (14%) 11 (15%)

# of centres W/O unlocked stall for disable person: 10 10



### SANITARY WASTE DISPOSAL

This week 2 weeks ago

# of centres W/O disposal arrangements: 7 (100%) 7 (100%)  
(female centres only)


### CLEANLINESS OF FACILITIES

# of WASH centres considered clean and hygienic: 8 (57%) 3 (21%)



### WATER

This week 2 weeks ago

# of WASH centres without running water: 13 (93%) 13 (93%)

% of WASH centres with no internal or external taps: 7% 21%

Average # of taps per centre in/outside: 0.3/1.8 0.1/1.9

# of tap leaking in centres with running water in/outside: 0/0 1/0



### PRIVATE CONNECTIONS

This week 2 weeks ago

# of private connections to water tanks: 1 4

# of private connections to taps: 0 1

# of private connection to WASH centre septic tanks\*\*\*\*: 0 4



### SEWAGE & STAGNANT WATER

# septic tanks with visible signs of overflow: 0 (0%) 0 (0%)

# of centres W/O stagnant water inside or outside\*\*\*: 9 (64%) 10 (71%)

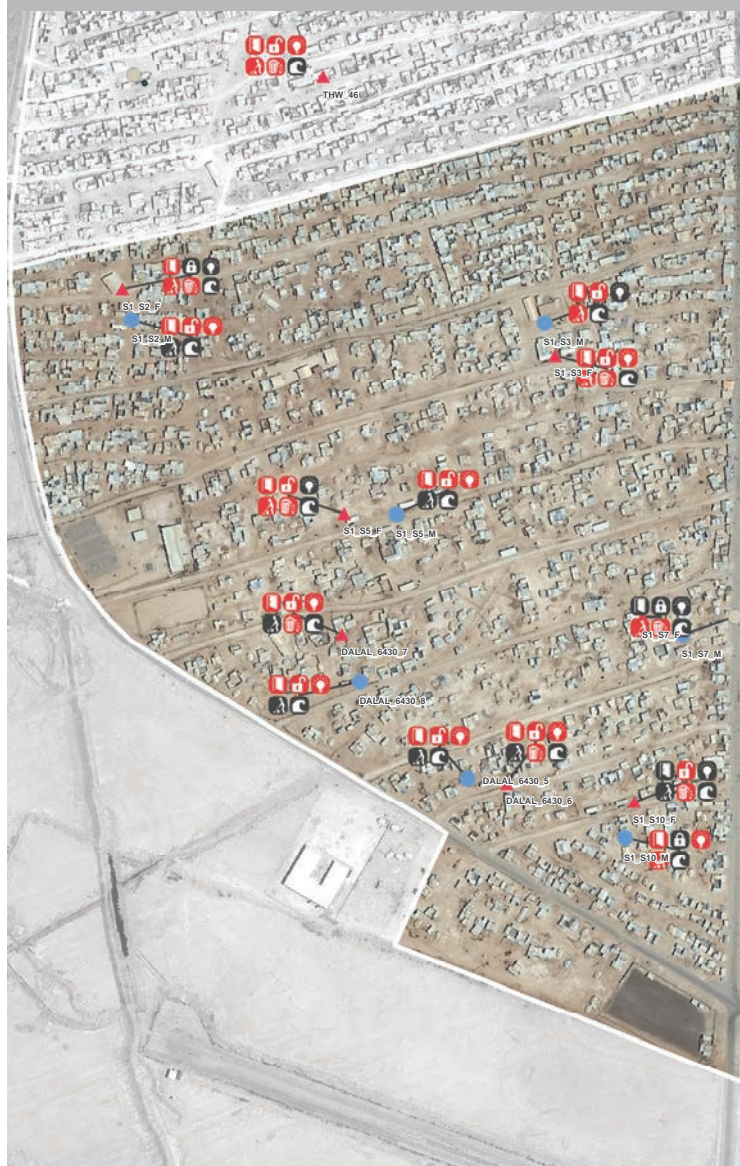
\* All active wash centres were assessed, except those that were locked and could not be accessed for the assessment

\*\* The minimum standard states that in communal facilities toilets should be available at a rate of one functional toilet per 50 people.

\*\*\* The minimum standard is that 80% of WASH centres have no stagnant water.

\*\*\*\* This includes both pipes connecting into and drains connecting close to septic tanks.

### DISTRICT 12: Compliance with minimum standards



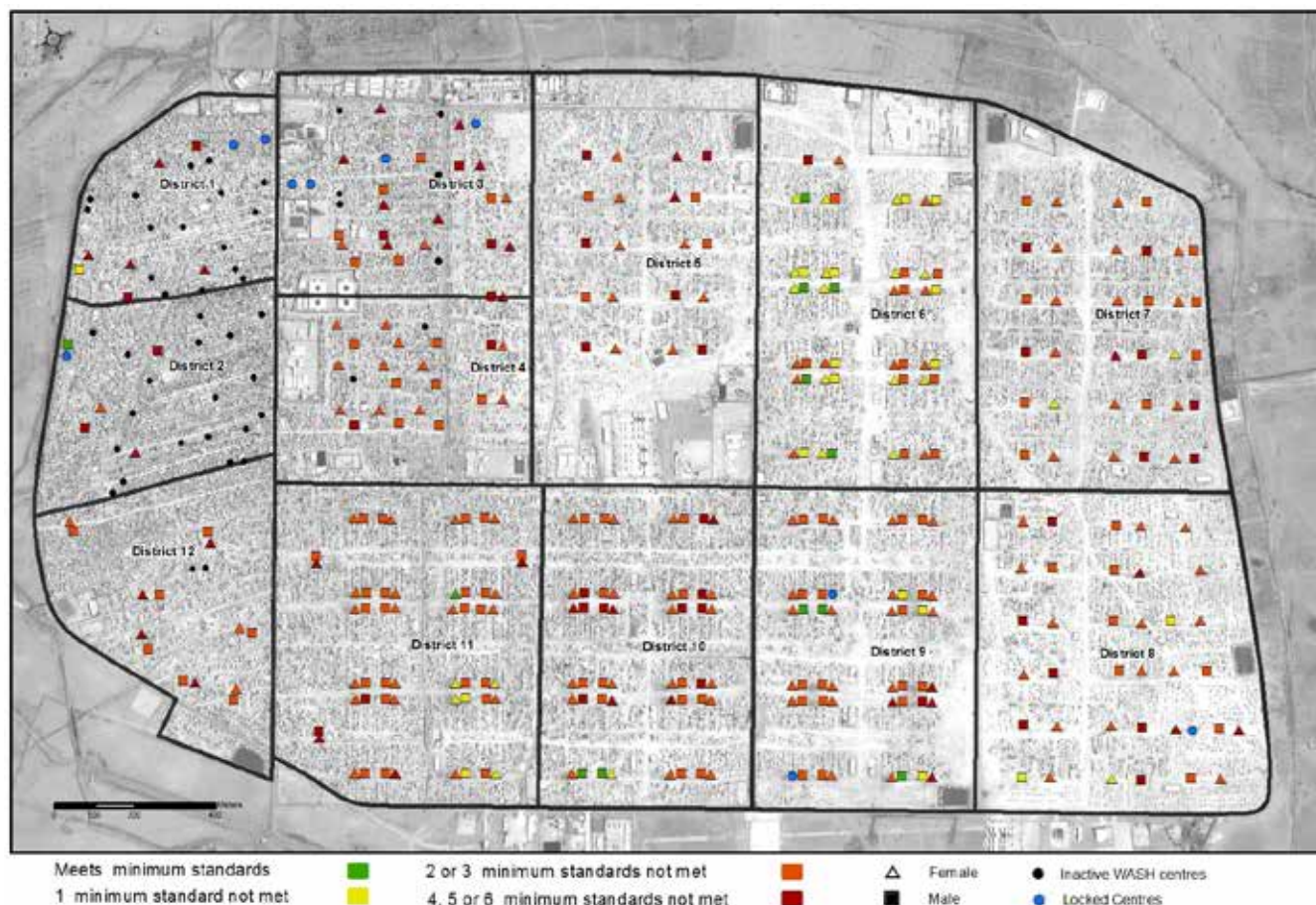
### DISTRICT 12: Compliance with minimum standards

Complied on doors	Complied on locks	Complied on lighting	female WASH centre
Did not comply on doors	Did not comply on locks	Did not comply on lighting	
Complied on cleanliness	Complied on disposal arrangements	Septic tank not overflowing	Male WASH centre
Did not comply on cleanliness and hygiene	Did not comply on disposal arrangements	Septic tank overflowing	

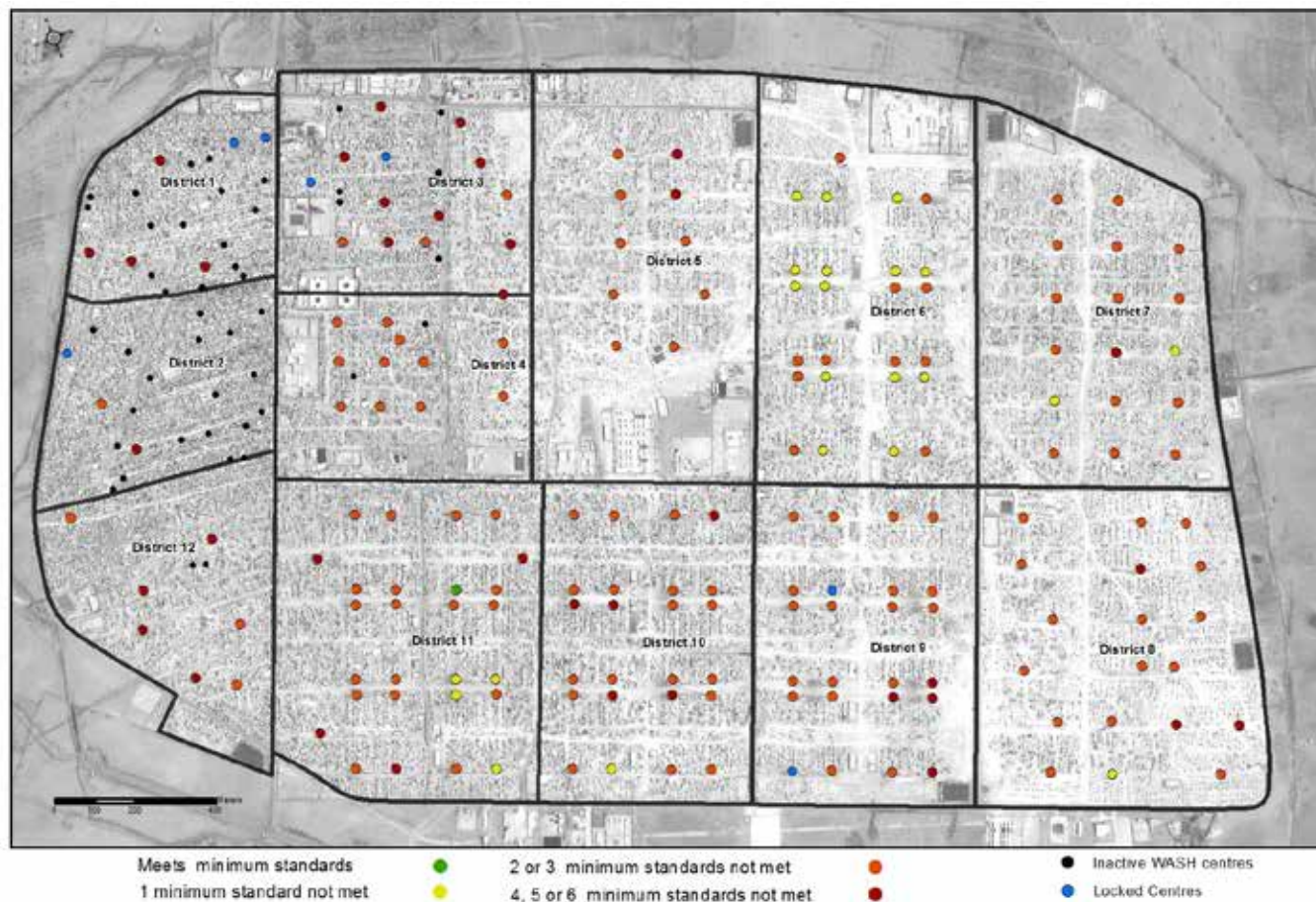


# Al Za'atari Camp: FORTNIGHTLY WASH CENTRE MONITORING

Map 1: WASH centres meeting minimum standards



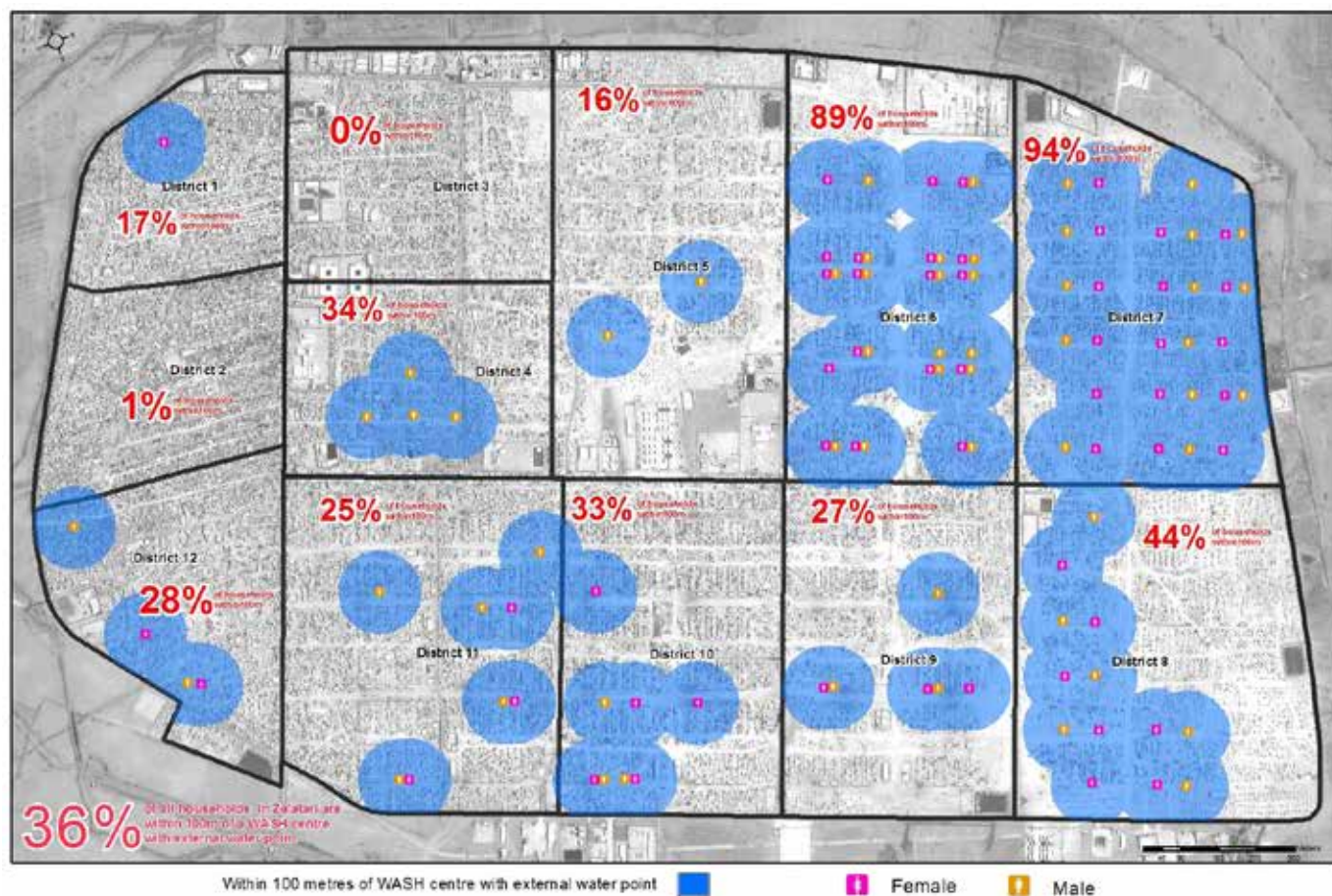
Map 2: Female WASH centres meeting minimum standards





# Al Za'atari Camp: FORTNIGHTLY WASH CENTRE MONITORING

Map 3: Shelters within 100m of a WASH centre with external water point



## (1) The minimum standards assessed here at the level of the individual WASH centre are:

- (1) Doors on 100% of latrines and shower cubicles
- (2) At least one latrine and shower cubicle in each WASH centre has an internal lock
- (3) 100% of WASH centres have lighting (this standard was considered met if they had internal OR external lighting)
- (4) Facilities are clean and hygienic (this standard was considered met if no faeces was found outside the stalls, inside shower stalls or inside toilet stalls outside of the squat pan)
- (5) No visible sign of septic tank overflow
- (6) There is an arrangement for disposal of baby diapers & menstrual hygiene materials (assessed in female WASH centres only)

## About REACH

REACH is a joint initiative of two international NGOs - ACTED and IMPACT Initiatives - and the UN Operational Satellite Applications Programme (UNOSAT). REACH was created in 2010 to facilitate the development of information tools and products that enhance the capacity of aid actors to make evidence-based decisions in emergency, recovery and development contexts. All REACH activities are conducted in support to and within the framework of inter-agency aid coordination mechanisms.

For more information visit: [www.reach-initiative.org](http://www.reach-initiative.org) and follow us @REACH\_info