

FACTSHEET

FORTNIGHTLY WASH MONITORING

AL AZRAQ REFUGEE CAMP, JORDAN – VILLAGES 3 AND 6

17 – 21 AUGUST 2014



This factsheet provides an overview of the camp's **WASH centres and tap stands in Village 3 [all blocks] and Village 6 [blocks 1-10]** to help facilitate the design and efficacy of interventions. The data was collected by REACH during the week of **17-21 August 2014**, during which REACH enumerators assessed **1481 WASH centres and 29 tap stands** in total: 904 WASH centres (99%) and 11 (92%) of tap stands in Village 3, as well as 577 WASH centres (95%) and 18 (100%) tap stands in Village 6. To request data at the level of individual WASH centres and tap stands, or for more information regarding the methodology, please contact: philip.bato@reach-initiative.org.

1. WASH CENTRES

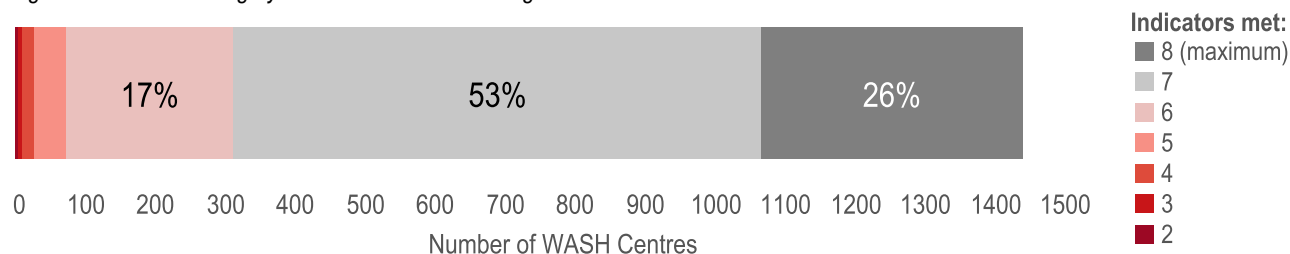
1.1 STRUCTURAL INTEGRITY

The following structural integrity indicators were assessed:

	Village 3	Village 6	TOTAL
1. Doors securely attached to both shower and toilet stalls	99%	98%	99%
2. Door handles attached to both shower and toilet doors	96%	90%	94%
3. Locks present on inside of both shower and toilet stalls	97%	92%	95%
4. Locks present on outside of both shower and toilet stalls	98%	92%	95%
5. No holes in the roof of the WASH structure (over 0.5cm)	92%	95%	94%
6. No holes in the wall of the WASH structure (over 0.5cm)	84%	91%	87%
7. Ventilation pipe is present and fully intact	92%	95%	93%
8. Desludging cap is present on septic tank and fully intact	48%	23%	53%

- **79% of WASH centres met all or 7 out of 8 structural integrity indicators¹.** In total, 26% of WASH centres were fully intact.

Figure 1: Structural integrity of WASH centres in Villages 3 and 6



- The 3 lowest-scoring indicators were **missing or broken desludging caps** (53% of all WCs), **holes in the walls** (13% of all WCs) and **missing or broken ventilation pipes** (7% of all WCs).

¹ WASH centres in which one or both doors were privately locked were excluded from results related to the inside of WASH centres as well all indicator indexes to ensure data consistency.

- **71% of all desludging caps were removed from the septic tanks in Village 6**, while 22% of the properly installed caps were broken. In Village 3, 42% of all desludging caps were missing, while 17% of the remaining caps were broken.
- **The ventilation pipe was removed in 52 WCs (6%) in Village 3 and 18 WCs (3%) in Village 6.**

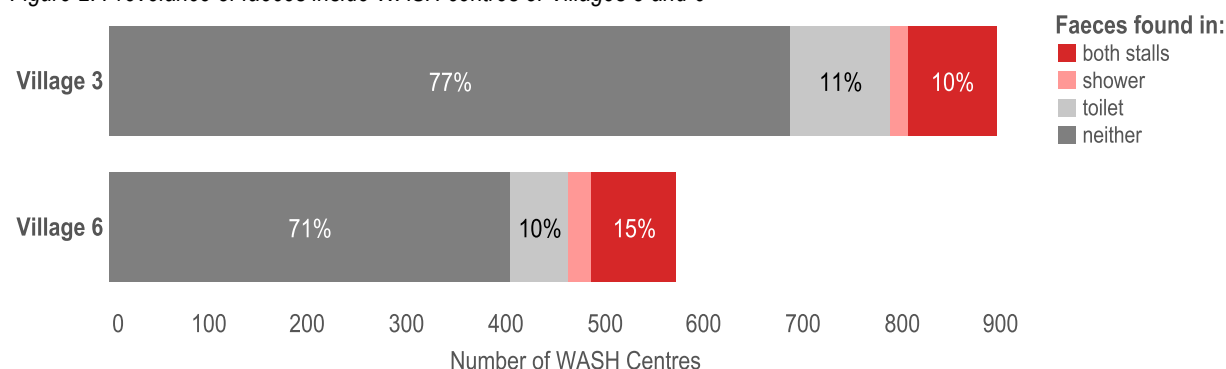
1.2 HYGIENE

The following hygiene indicators were assessed:

	Village 3	Village 6	TOTAL
1. No faeces inside both WC stalls	77%	71%	75%
2. No faeces outside the WASH centre (within 5m radius)	89%	83%	86%
3. No rubbish inside both stalls	72%	77%	74%
4. No standing water outside both stalls (within 5m radius)	98%	99%	98%

- 56% of all WASH centres met all hygiene indicators, while 81% WCs met 3 or all indicators.
- **In 31% of all WASH centres faeces were found in shower stalls and toilet stalls outside of the squat pan or outside the stalls.** [See Maps 1 and 2]
- **Faeces were found outside 203 WCs (14%) in Villages 3 and 6**, indicating open defecation is practiced in the camp. [See Maps 3 and 4]

Figure 2: Prevalence of faeces inside WASH centres of Villages 3 and 6



- In 14% of all WCs, rubbish was found in both shower stalls and toilet stalls. In addition, in 7% of WCs rubbish was found inside the toilet stall only, and in 5% the shower stall only.

1.3 CHILD-FRIENDLY AND DISABLED ACCESS

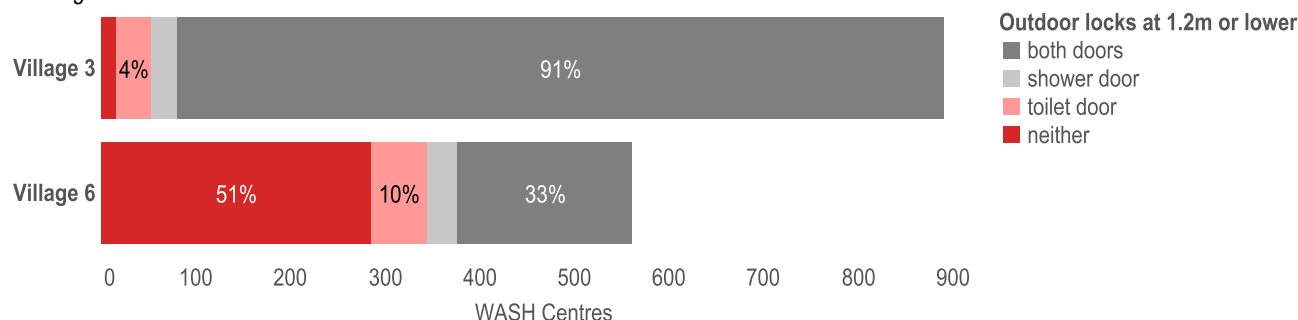
The following child-friendly access indicators were assessed:

	Village 3	Village 6	TOTAL
1. Door handles at 1.2m or lower on both doors ²	9%	8%	8%
2. Inside locks at 1.2m or lower on both doors	98%	96%	97%
3. Outside locks at 1.2m or lower on both doors	91%	33%	69%

- The lack of child-friendly door handles can be mitigated by the outside locks, which are the lowest handle on WCs and therefore most easily accessible to children. **91% of all outside locks in Village 3 were at 1.2m or lower, a 19% increase from the last assessment (72%).** In Village 6, however, **67% of all WCs did not have outside locks placed at 1.2m or lower on both doors.** [See Maps 5 and 6]

² In most cases the outside door handles and locks were placed at 1.2m from the height of the concrete slab on which the WASH super-structure sits. However, this slab is often not big enough to step up onto when the door is shut, and is in most cases at a height above the ground. This can make the handles and locks difficult to reach for children.

Figure 3: WASH centres with outdoor locks at 1.2m or lower



Three additional access indicators were measured:

	Village 3	Village 6	TOTAL
1. Both WC doors are not privately locked	98%	96%	97%
2. WASH Centres that have been designed for disabled persons and have a finished access ramp	15%	10%	13%
3. Disabled toilet is still in place inside disabled WASH centre	71%	70%	71%

2. TAPSTANDS

2.1 STRUCTURAL INTEGRITY

These structural indicators were assessed at the tapstand level:

	Village 3	Village 6	TOTAL
1. All 4 taps were present at the tapstand	91%	100%	97%
2. All remaining taps at the tapstand provide water when turned on (during operational hours)	90%	82%	85%
3. All remaining taps at the tapstand have handles	82%	94%	90%
4. All remaining taps at the tapstand have anti-theft guards	91%	100%	97%
5. The concrete slabs of all tap stands are in decent (functional) or good order	100%	100%	100%

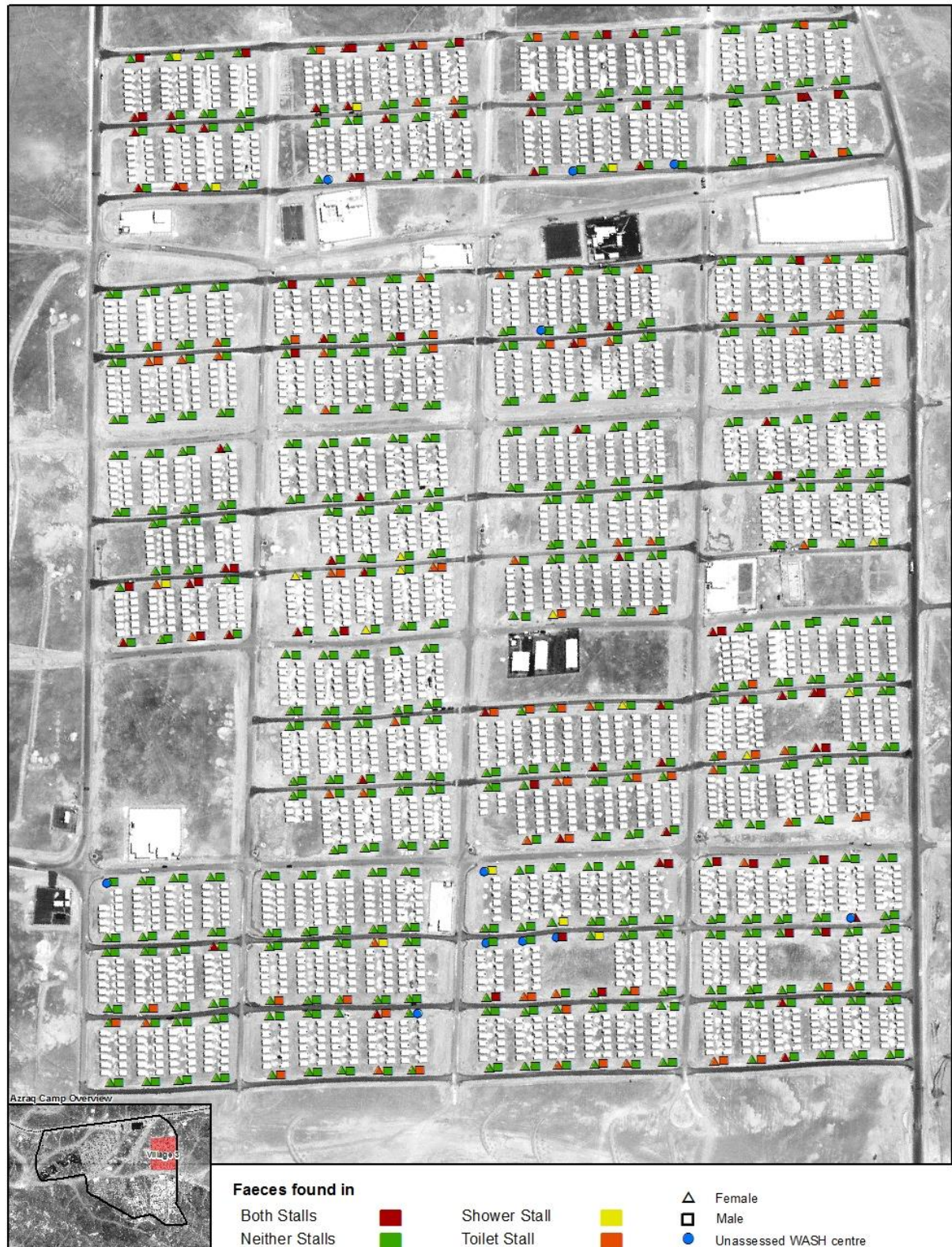
- **At 72% of tapstands, all 4 taps were present and each tap provided water when turned on.**
- In Village 3, tapstand #4 was missing one tap and two additional handles, and another tapstand (#1) missed one handle. In Village 6, one tap handle was missing in total (tapstand #74). [See Maps 7 and 8]

2.2 OTHER

	Village 3	Village 6	TOTAL
1. No faeces within 10m of the tapstand	46%	44%	45%
2. No private hoses are connected to the tapstand	100%	83%	90%
3. Average number of people waiting at the tapstand	1	0	1

- **Faeces were found at 5 tapstands (55%) in Village 3, and 8 tapstands (56%) in Village 6.**
- A private hose was connected to an individual tap (1 out of 4) at 3 tapstands in Village 6. [See Map 8]

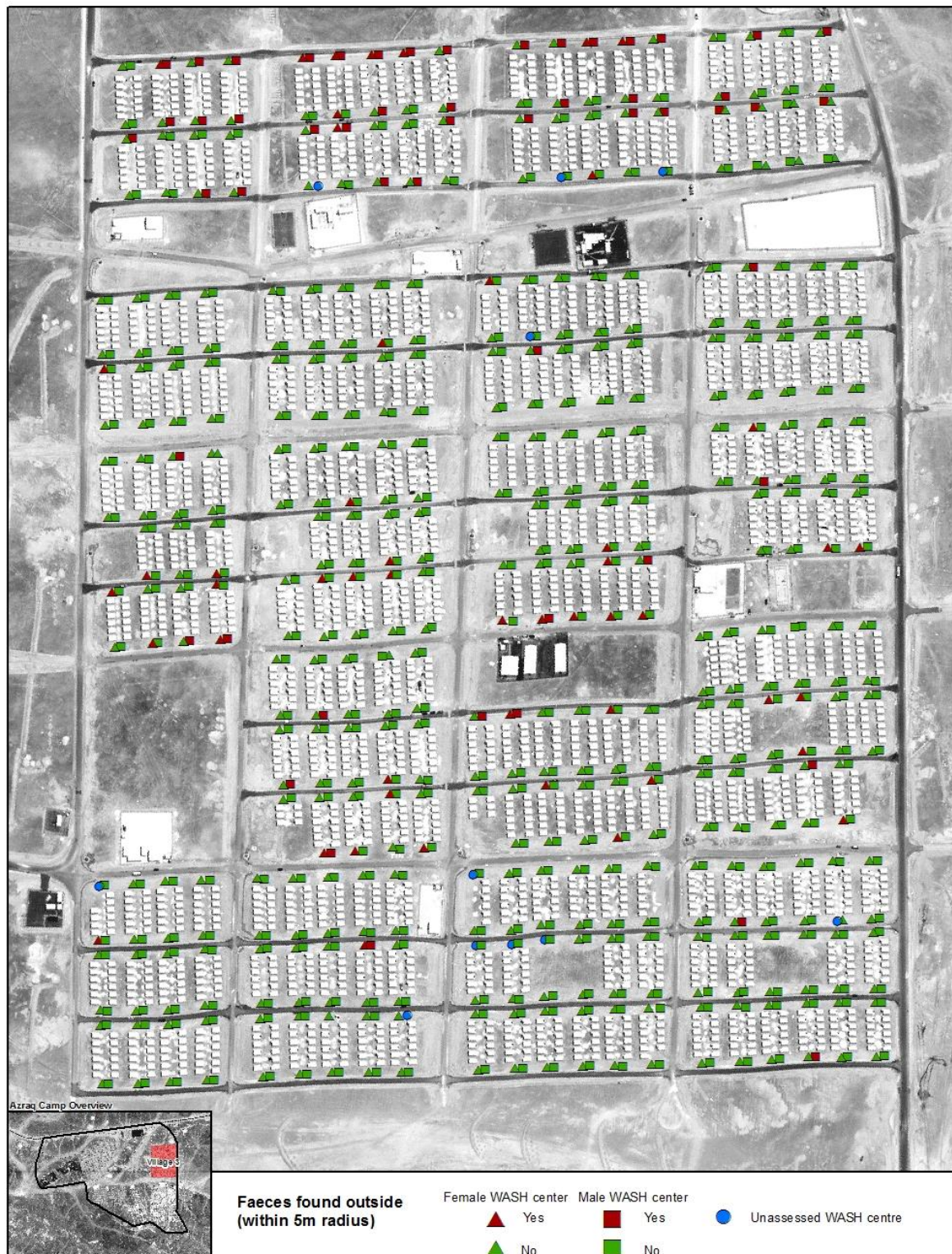
Map 1: Faeces found inside WASH centres in Village 3



Map 2: Faeces found inside WASH centres in Village 6



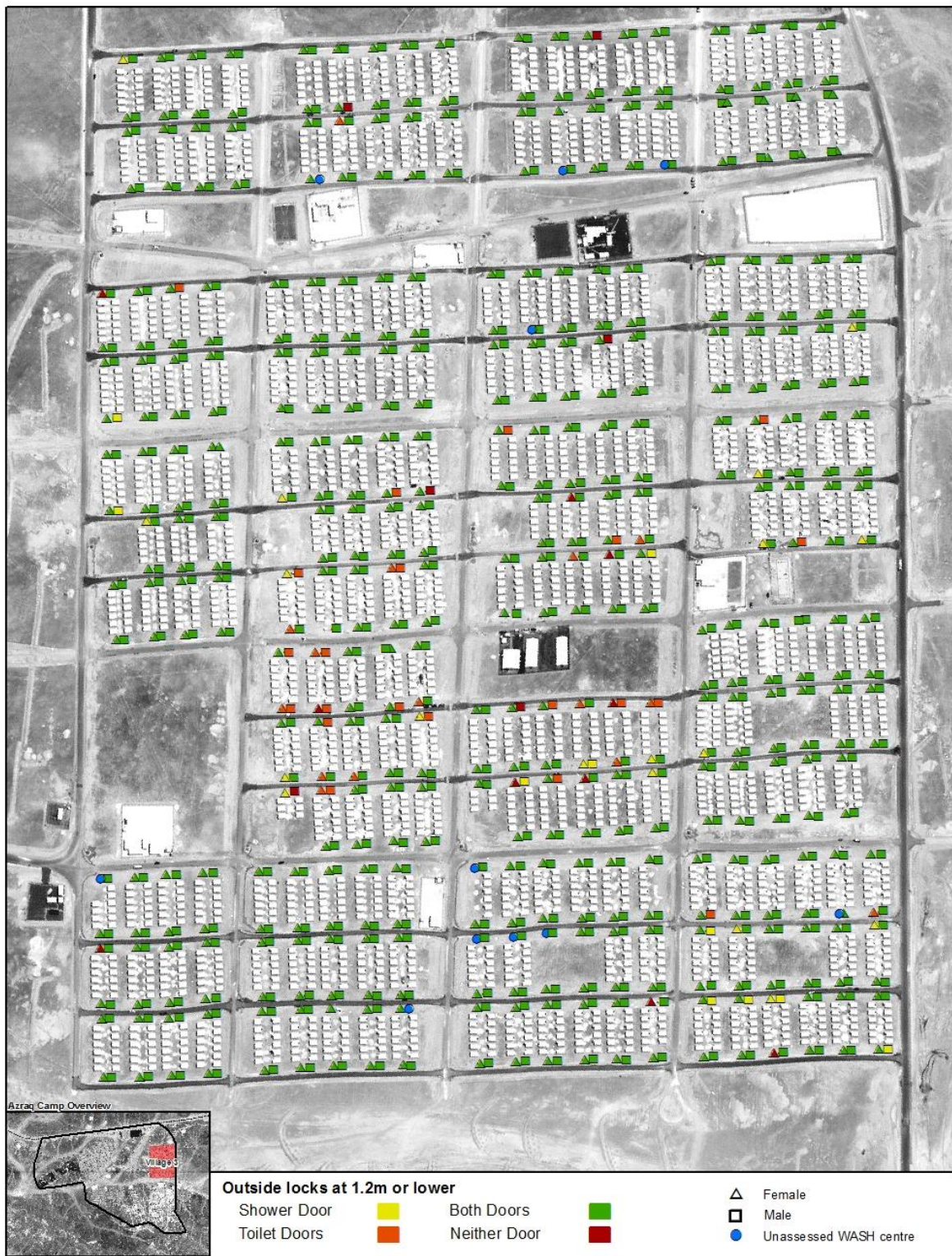
Map 3: Faeces found outside WASH centres in Village 3



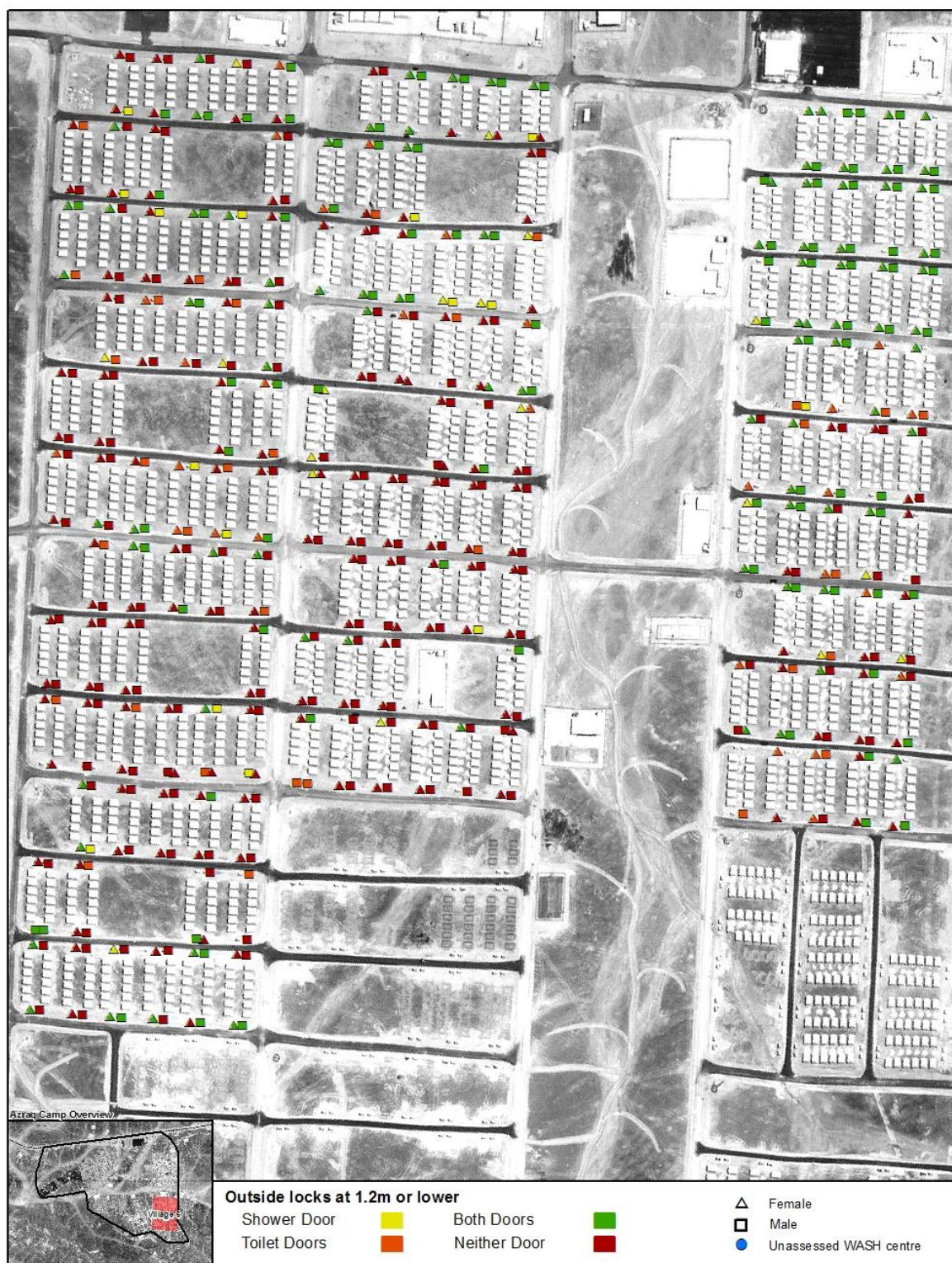
Map 4: Faeces found outside WASH centres in Village 6



Map 5: Outside locks at the height of 1.2m from the ground or lower in Village 3



Map 6: Outside locks at the height of 1.2m from the ground or lower in Village 6



Map 7: Missing tapstand handles in Village 3



Map 8: Missing tapstand handles and private connections in Village 6



About REACH

REACH is a joint initiative of two international NGOs - ACTED and IMPACT Initiatives - and the UN Operational Satellite Applications Programme (UNOSAT). REACH was created in 2010 to facilitate the development of information tools and products that enhance the capacity of aid actors to make evidence-based decisions in emergency, recovery and development contexts. All REACH activities are conducted in support to and within the framework of inter-agency aid coordination mechanisms.

For more information visit: www.reach-initiative.org and follow us @REACH_info