

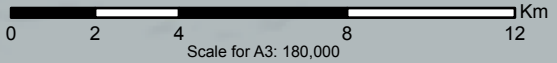
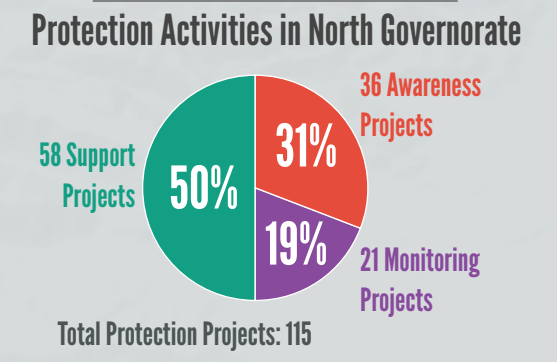
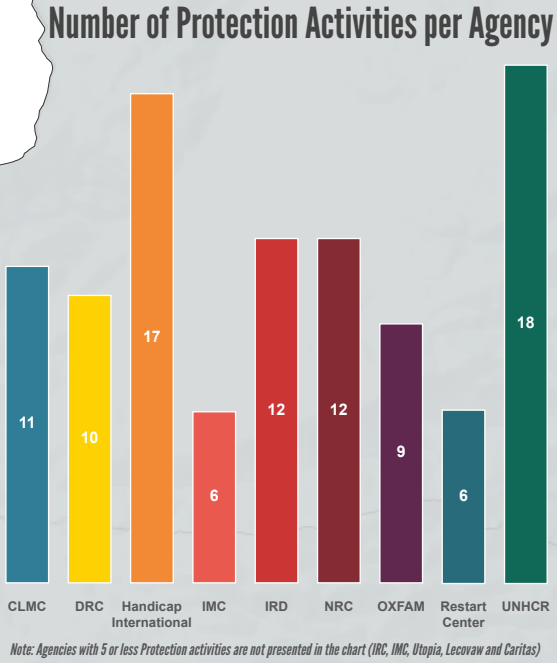
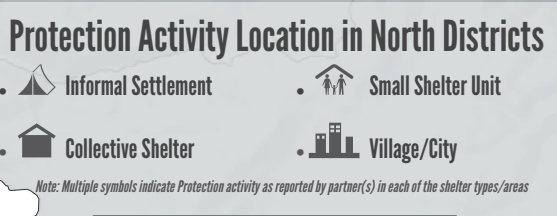
Lebanon - North Governorate

3W Protection Sector Summary for Tripoli + T5 Operational Area

For Humanitarian Use Only

DRAFT - Work in Progress

Production Date: 13 November 2014



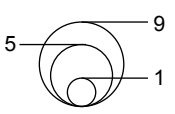
Implementing Agency:

- |         |                          |                  |           |          |
|---------|--------------------------|------------------|-----------|----------|
| D OXFAM | J DRC                    | M IMC            | P IRC     | S UTOPIA |
| E IRD   | K CLMC                   | N Restart Center | Q Caritas | T UNRWA  |
| G NRC   | L Handicap International | O UNHCR          | R Lecovaw |          |

Activity Type:

- Monitor
- Awareness
- Support

Activity per Agency:



- Cadastre Boundary
- District Boundary

Data Sources:

- Administrative boundaries: GADM, OSM
- Protection 4W Matrix (Activity types were grouped into three categories: Monitor: management/activities in community centres, registration/recording, systematic/structures protection monitoring and analysis; Awareness: legal awareness session, information/awareness sessions on access to services for community; Support: legal aid/individual counseling, referral and support to other persons with specific needs)

Coordinate System: WGS84

File: REACH\_LBN\_Map\_NorthGovernorate\_3wProtectionMappingTripoliT5\_13Nov2014\_A3

Contact: reach.mapping@impact-initiatives.org

Note: Data, designations and boundaries contained on this map are not warranted to be error-free and do not imply acceptance by the REACH partners, associated, donors mentioned on this map.