


5th Sweep: October 13th - December 10th, 2014

354  Active Informal Settlements

33 Inactive IS since the last sweep

294  Less than 4 shelter settlements

4,541  Shelters

32 New shelters identified after the 4th sweep

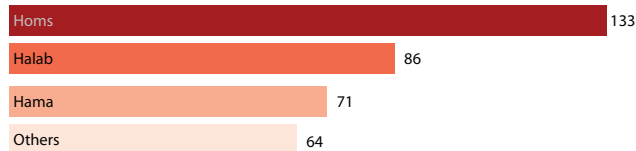
537  Shelters in < 4 settlements

25,430  Individuals

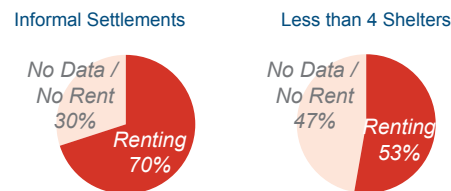
1,453 Total increase of number of individuals in IS

3,408  Individuals in < 4 settlements

Places of Origin of Syrian Refugees

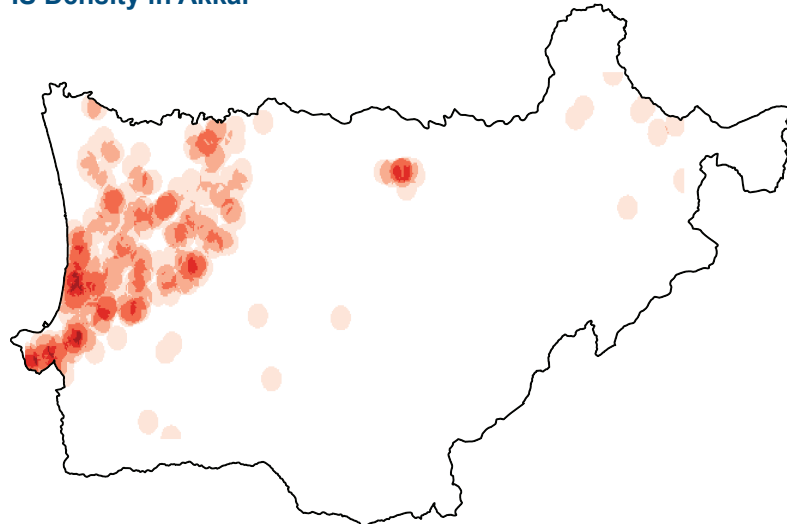


Refugee Renting* Lands

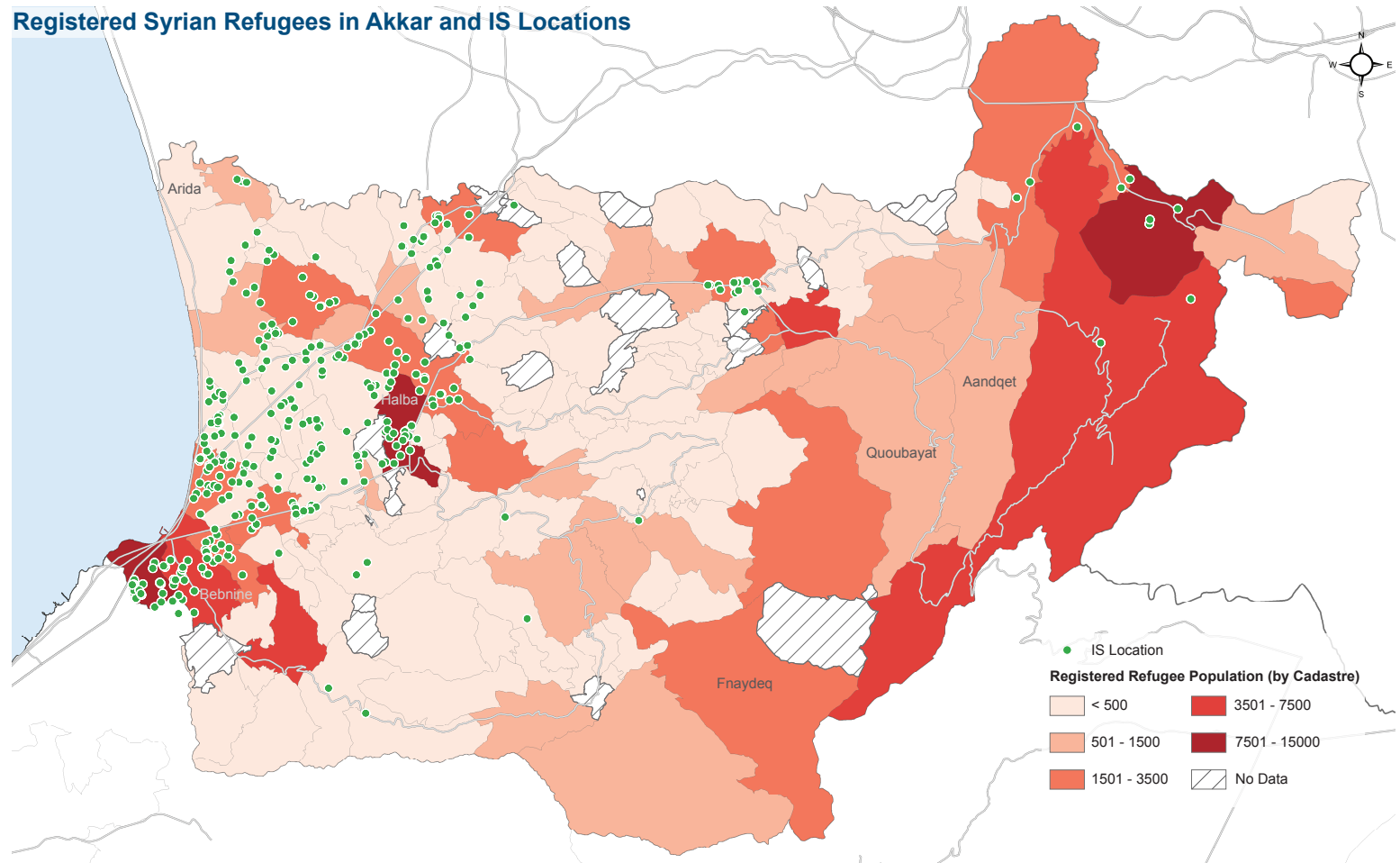


*Note: there were no specific questions concerning the data about basic needs and renting. The Shawish was given the freedom to add any comments/complaints at the end of the survey

IS Density in Akkar



Registered Syrian Refugees in Akkar and IS Locations



REACH began implementing the fifth sweep of IS on October 10, 2014. Using the geographic sweep approach agreed upon by Interagency Mapping Platform (IMAP) partners, REACH identified, geo-referenced, and collected key data on all IS in Akkar over a 9 week period. Data on IS in Akkar is updated on a continuous basis by REACH field teams who collect data on demographics, registration status, settlement leadership, landlords, date of establishment, rental costs, and place of origin.

Note: Due to security reasons, informal settlements in Akroum have not been assessed. Therefore, the data used is from the 4th sweep. Data on informal settlements is from the REACH IS Mapping Assessment (5th Sweep) conducted between October, November and December 2014. Informal settlements (IS) are commonly established on either rented or unauthorized public or private land on the outskirts of population centers, and in many cases lack access to basic utilities and services. Shelters in informal settlements are predominately handmade with a combination of plastic sheeting, timber, and various other materials sourced by displaced persons.