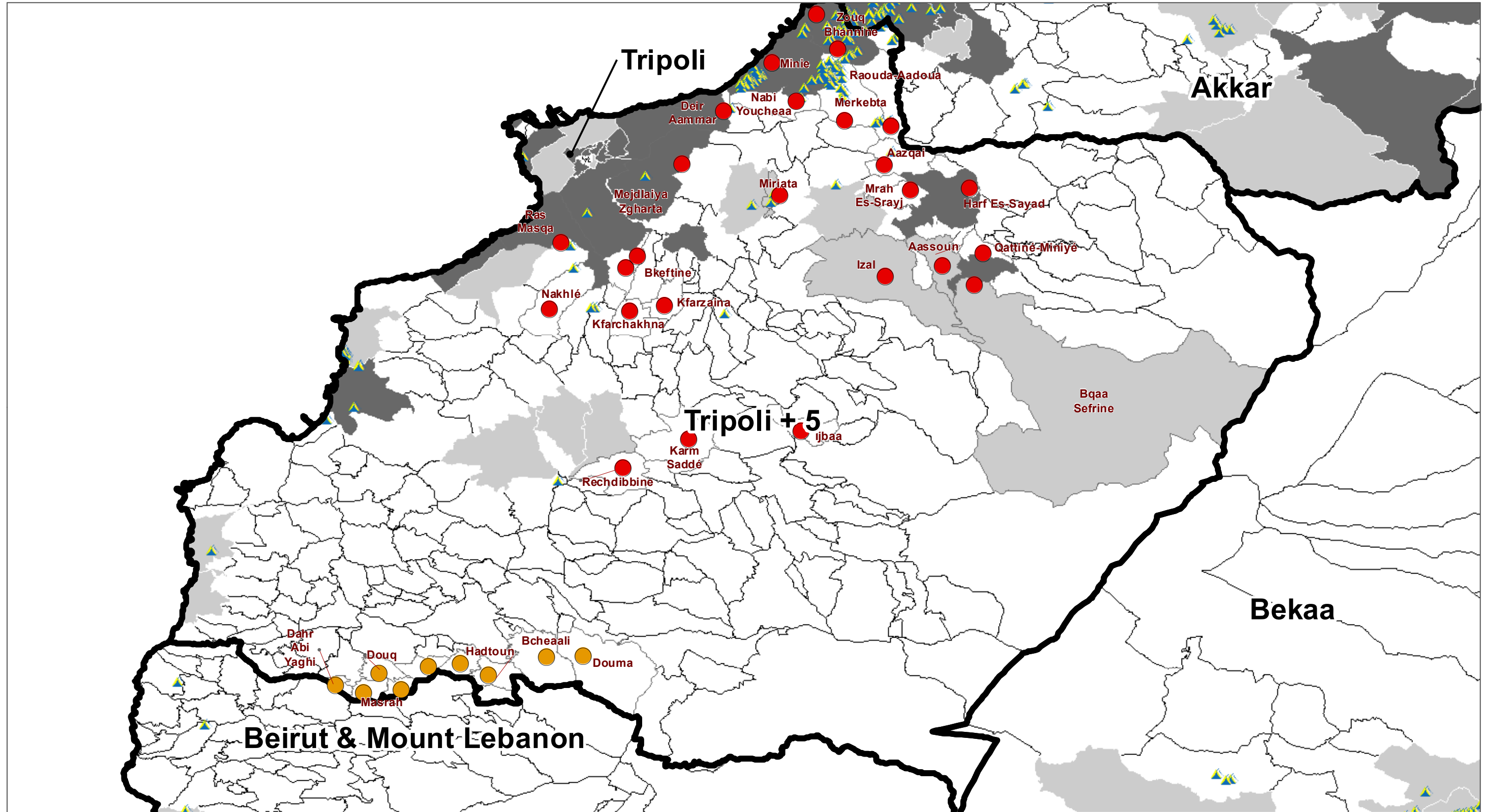


SYRIA REFUGEE RESPONSE
WASH Sector Working Group
Water Scarcity at Risk Areas
Tripoli + 5



WASH Sector Working Group
 GIS and Mapping by UNHCR and UNICEF
 For more information and updates contact
 William Lavell wlavell@unicef.org

Date: 6/24/2014



- Risk Level**
- High
 - Medium
 - ▲ Informal Settlements

- Vulnerable Cadastrals**
- Most and 2nd Most Vulnerable
 - 3rd, 4th, 5th Most Vulnerable



This map shows villages which are at risk of water scarcity in Tripoli area. The following criteria are associated with this risk

High Risk:

- Villages already under restrictions and will have <1hr day
- Villages already under restrictions and might not get 1m3/day
- Villages are far from the source and connected to low pressured network
- Villages fed from a spring which is already decreased by %50
- Villages fed from bore which is not capable to supply in continuous state more than 45min

Medium Risk:

- Villages fed 4hours/week and in need a big storage

For more information please contact
 William Lavell
 wlavell@unicef.org