



HIGHLIGHTS

19,536

refugees are actually
in the camp out of

32,508

persons of concern
registered

55%

of children, including

277

Identified separated and
unaccompanied minors

553

people with
disabilities,

33%

of these are children

3 in 10

households are
headed by women

1,348

women at risk

4,650

shelters currently
allocated

10,023

shelters built since
opening

General Information

Date of opening: April 30th, 2014

Capacity: 50,000 people (exp. to 100,000)

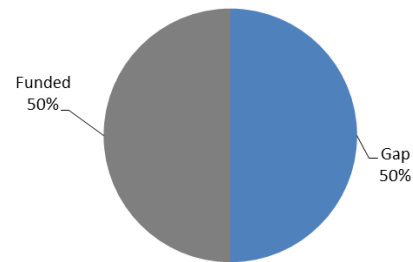
Size of camp area: 14.7 km²

Population increased since Jan'15: 191%

Place of origin in Syria	Total PoC
Dara'a	21.65%
Aleppo	20.67%
Homs	15.54%
Rural Damascus	10.61%
Other areas	31.53%
Total	100%

Funding

USD 13.7 million requested in 2016



2016 Funding priorities

- **US\$ 2.5 million** - Health Services
- **US\$ 2 million** - Shelter Maintenance
- **US\$ 1.8 million** - Protection
- **US\$ 1.5 million** - Community Mobilization

UNHCR Presence

50 national staff

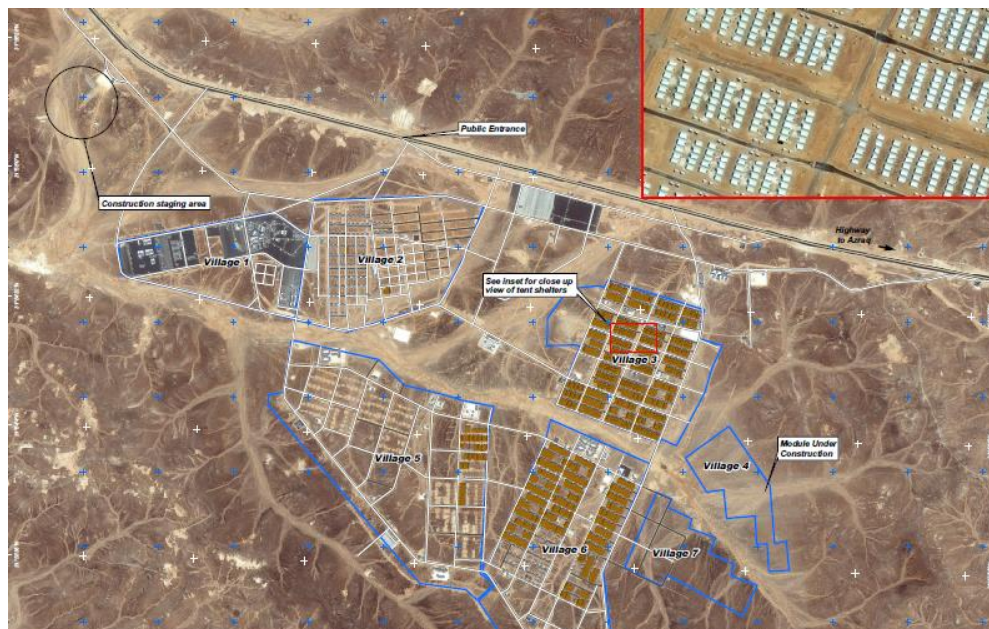
9 international staff

1 international volunteers

Geographical Snapshot:

Distance to national borders:

Syria: 90 km, Iraq: 255 km, Saudi Arabia: 75 km



*Figures as per 29th February 2016

BUILDING A COMMUNITY

Winterization

- As part of the winter response, refugees who arrived to the camp after Feb '15 received **3 high thermal blankets** per person, **gas cylinders** and **heaters**. Moreover, **cash assistance** has been provided twice as cash-in-hand and once as unconditional cash vouchers for all camp population and **winter clothes** were distributed. As part of the shelter enhancement, **plastic sheets** were distributed and quick fix teams continued the maintenance of the damaged shelters. In preparation for potential flooding, the drainage system has been repaired and an inter-agency contingency plan for harsh weather conditions has been put in place.

Electricity

- A comprehensive energy plan to connect electricity to every household is ongoing with the installation of the low voltage poles currently taking place. Once the project is completed, each shelter will have an allowance of **1kWh/day**, enough power to operate lights, a refrigerator, television, fan and charge phones. A solar power plant will also be installed in the camp in early 2016 to reduce the cost of electricity bills. In the meantime, UNHCR has installed **472** solar street lights and distributed average of **4** solar lanterns per household.

Livelihoods

- Two market areas are operating in Azraq camp. The 100 shops - 50 owned by the refugees and 50 by the host community - provide the camp with food shops, restaurants, accessories, bikes and many other items. UNHCR and its partners have set up an Incentive Based Volunteering (IBV) scheme, through which refugees play an active role in the functioning of the camp while earning some extra income.

Food Security

- Refugees receive 20JOD (equivalent to \$28) per person every month from WFP via an e-card which they can use to buy food from the Sameh Mall supermarket in the camp. WFP also distributes four pieces of bread daily to all refugees in the camp.

Education

- There is one complex in the camp hosting Primary and Secondary schools which operates two shifts, one for girls in the morning and boys in the afternoon, with a capacity for 5,000 students. Currently, **3,000** children are enrolled at the school. Informal and non-formal education is also available. There is one kindergarten with a capacity for 400 children. Furthermore, there are 4 child-friendly spaces with playgrounds and 4 adolescent-friendly spaces in the camp providing additional services.

Health

- 2** primary health care centers (PHC) operate in the camp, one comprehensive PHC in Village 6 and one basic PHC in Village 3. PHCs are open from 9am to 4pm daily. Secondary level healthcare (medical surgical and maternity care) is available to refugees at the field hospital running 24 hour per day providing primary care dental services, emergency care, lab services, x-ray services and general surgery. Health and nutrition services are provided through UNHCR partners, including mental and reproductive health. An average of 24 babies per week was delivered this month.

Water and Sanitation

- There is one new borehole in the camp with a capacity of 50m³/h which ensures good water quality and quantity control as well as better cost efficiency. The average water supply is **560 m³** per day. Water is distributed through the water supply network to **26** tap stands. The Waste Water Treatment Plant started receiving a small amount of waste water from the camp.

Targeting Persons with Specific Needs

- UNHCR and its partners provide psychosocial support to men, women, girls and boys in need. Special assistance is delivered to vulnerable groups such as single parent families and persons with disabilities. UNHCR works closely with its partners on child protection issues and to strengthen early identification, referral and response to sexual and gender-based violence (SGBV) cases.

WORKING WITH PARTNERS

UNHCR works with the following partners in Azraq Camp: The Syrian Refugee Affairs Directorate (SRAD), Ministry of Public Works and Housing, Ministry of Health, Ministry of Education, ACF, ACTED, CARE, Finn Church Aid, Handicap International, ICRC, IMC, IOM, IRC, Mercy Corps, NRC, Questscope, REACH, Relief International, Save the Children, UNFPA, UNICEF, WFP and World Vision.

Contacts:

Acacio Jafar Juliao, Head of FO Azraq, juliao@unhcr.org, Cell +962-79-613 97 69

Olga Sarrado Mur, Associate External Relations and Mass Information Officer, sarrado@unhcr.org, Cell +962-79-761 77 99