

## HIGHLIGHTS

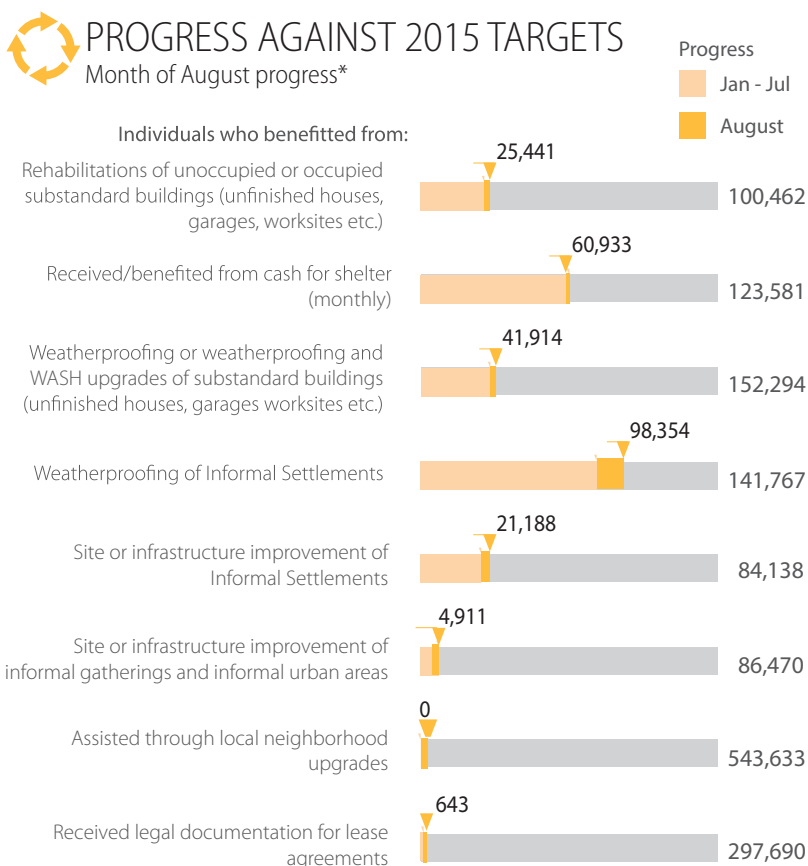
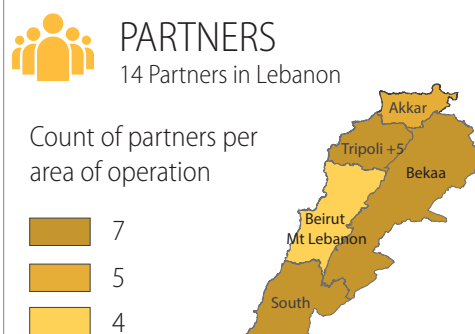
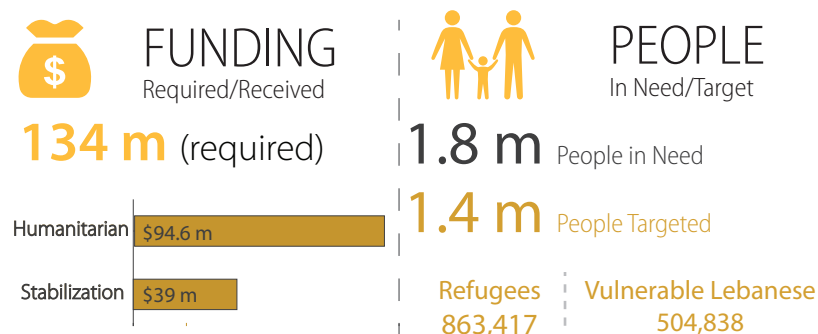
Despite regular and continuous implementation of shelter activities, the general situation of the shelter sector remains precarious. Of particular concern is the situation vis-a-vis unsealed windows, damaged roofs, and lack of lighting. The month of August witnessed an increase of weatherproofing assistance in preparation for the upcoming winter. The regularly updated detailed assessments allowed to target the most severely and highly socioeconomically vulnerable households living in poor shelter conditions. In addition, various weatherproofing kits have been standardized assisting refugees to reinforce the structure of their makeshift shelters and providing them with the ability to completely seal it off.

During the month of August 16,822 vulnerable refugees living in informal settlements and 6,029 living in substandard buildings were supported through the provision of weatherproofing kits, mainly distributed in Bekaa and Akkar.

580 individuals living mainly in Bekaa and Mount Lebanon were provided with 116 new arrival kits (NAK). The NAK is mostly provided by UNHCR and partners to those who were evicted from their original shelters for various reasons such as security imperatives and/or limited financial capability of paying rent.

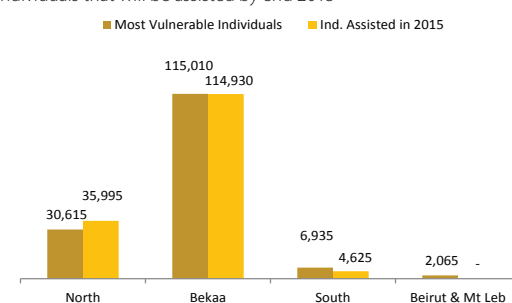
In comparison to the weatherproofing kits distributed in the past years, the NAK is an improved combination of timber and plastic sheeting, with a more robust shape, and of a durable life span reaching up to three years.

The Ministry of Social Affairs (MOSA), in collaboration with the shelter sector, started the distribution of 15,000 waterproof and heavy duty plastic sheets as part of a donation provided by the Popular Republic of China. 7,500 vulnerable refugee families (37,500 individuals) living in informal settlements in Akkar and Bekaa will be targeted for this purpose. The plastic sheets will be fixed on the roofs of the shelters to prevent potential water leakages during the winter season.

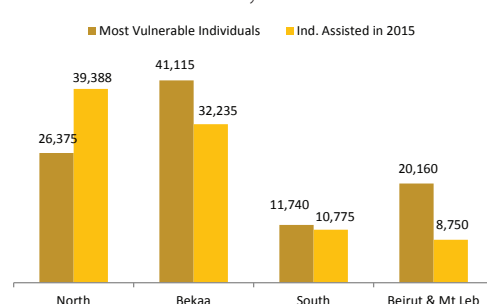


### Syrian refugees' shelter vulnerability

**Analysis 1:** Estimated number of severely and highly vulnerable individuals living in informal settlements compared to the number of individuals that will be assisted by end 2015



**Analysis 2:** Estimated number of severely and highly vulnerable individuals living in substandard buildings compared the number of individuals that will be assisted by end 2015



Note: This statistical analysis compares numbers at macro level and do not refer to individual Syrian refugees  
Source: HH profiling questionnaire and shelter gap analysis - August 2015