

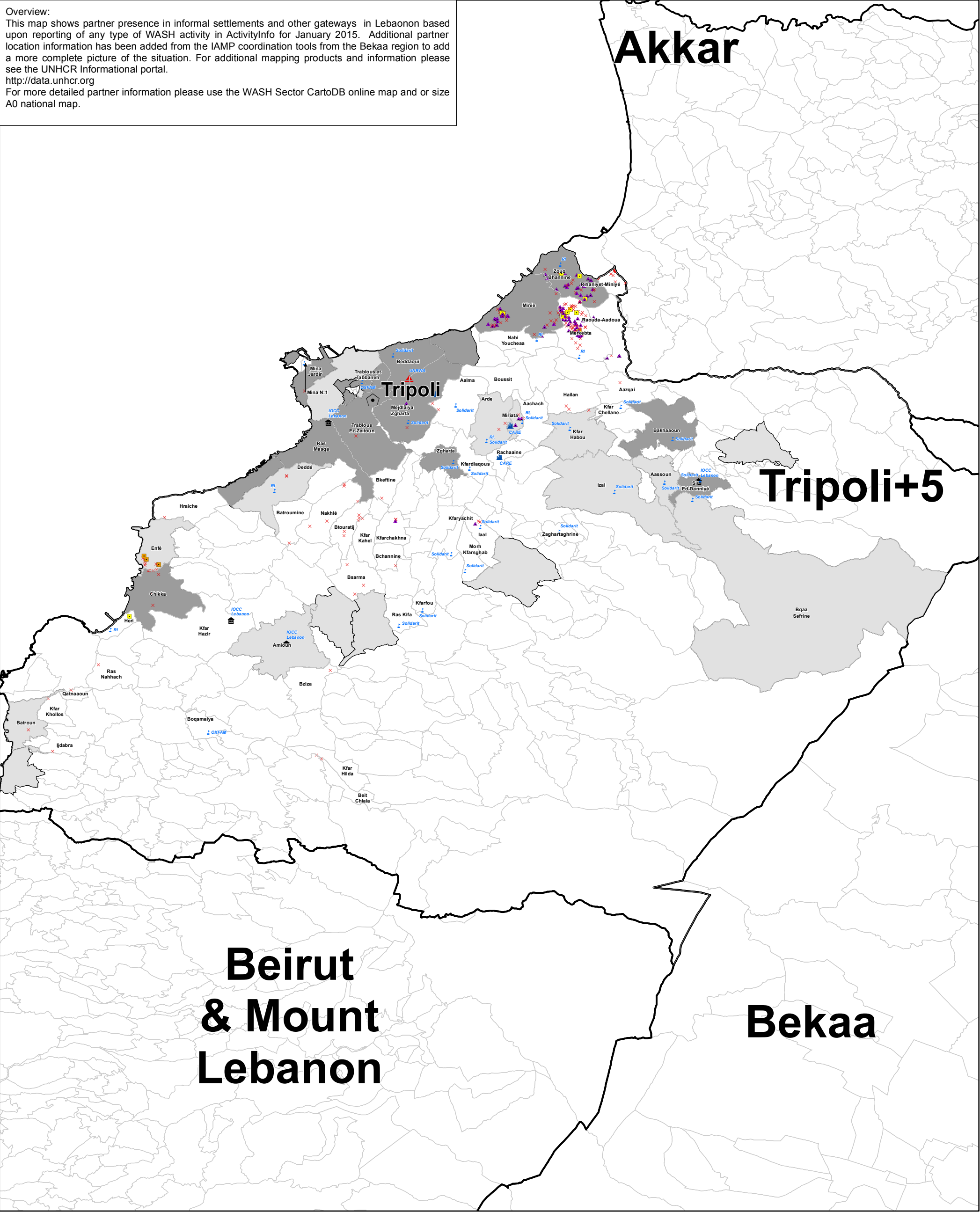
SYRIA REFUGEE RESPONSE

WASH Sector Working Group
National WASH Partner Presence
January 2015
Tripoli+5



WASH Sector Working Group
GIS and Mapping by UNHCR and UNICEF
For more information and updates contact
William Lavell wlavell@unicef.org
Date: 3/19/2015

Overview:
This map shows partner presence in informal settlements and other gateways in Lebanon based upon reporting of any type of WASH activity in ActivityInfo for January 2015. Additional partner location information has been added from the IAMP coordination tools from the Bekaa region to add a more complete picture of the situation. For additional mapping products and information please see the UNHCR Informational portal.
<http://data.unhcr.org>
For more detailed partner information please use the WASH Sector CartoDB online map and or size A0 national map.



UNICEF

No Coverage

ACF

AVSI,CISP

CISP

CISP,PU-AMI

CONCERN

GVC

INTERSOS

LRC

Lebanese Red Cross

MEDAIR

Mercy Corps

Mercy Corps / Oxfam

Mercy Corps / WVI

NRC

NRC / ACF

OXFAM

PU-AMI

PU-AMI,RI

PU-AMI,Solidarity

RI

Solidarity

WVI

SCI

Collective Centre

Locality

Municipality

Palestinian Camp

School

242 Most Vulnerable Cadastrals

1st and 2nd Most Vulnerable

3rd,4th and 5th Most Vulnerable

Main Cities

0

5

10

KM

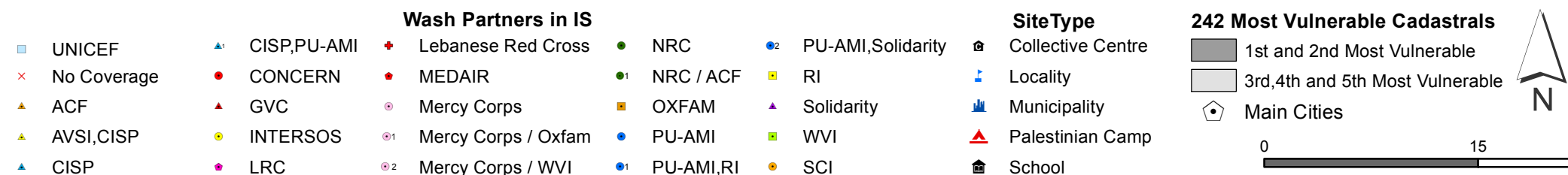
N

**WASH Sector Working Group
National WASH Partner Presence
January 2015
Bekaa**



Date: 3/19/2015

For more detailed partner information please use the WASH Sector CartoDB online map and or size A0 national map.



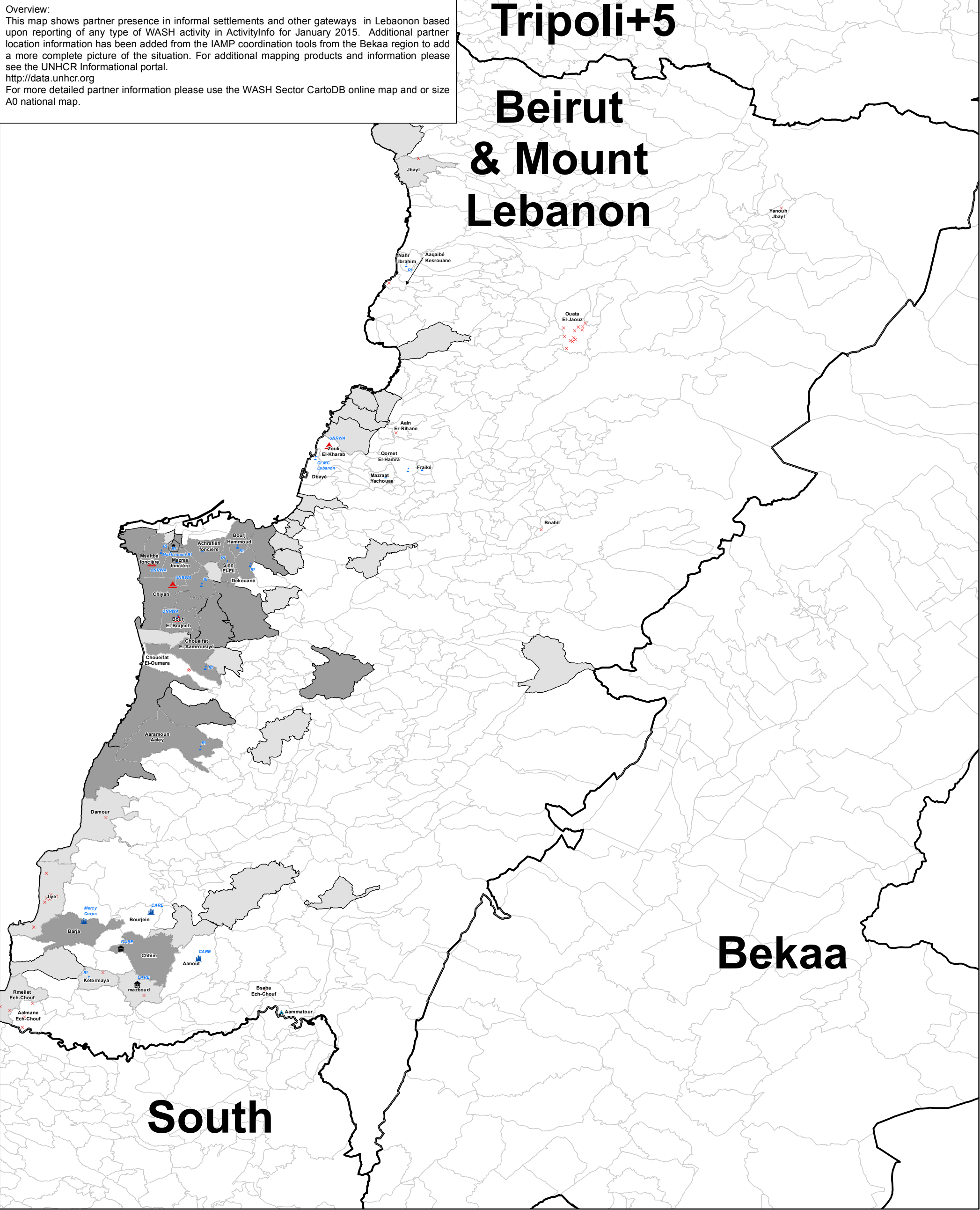
SYRIA REFUGEE RESPONSE

WASH Sector Working Group
National WASH Partner Presence
January 2015
Beirut & Mount Lebanon



WASH Sector Working Group
GIS and Mapping by UNHCR and UNICEF
For more information and updates contact
William Lavell wlavell@unicef.org
Date: 3/19/2015

Overview:
This map shows partner presence in informal settlements and other gateways in Lebanon based upon reporting of any type of WASH activity in ActivityInfo for January 2015. Additional partner location information has been added from the IAMP coordination tools from the Bekaa region to add a more complete picture of the situation. For additional mapping products and information please see the UNHCR Informational portal.
<http://data.unhcr.org>
For more detailed partner information please use the WASH Sector CartoDB online map and or size A0 national map.



UNICEF

No Coverage

ACF

AVSI,CISP

CISP

CISP,PU-AMI

CONCERN

GVC

INTERSOS

LRC

Lebanese Red Cross

MEDAIR

Mercy Corps

Mercy Corps / Oxfam

Mercy Corps / WVI

NRC

NRC / ACF

OXFAM

PU-AMI

PU-AMI,RI

PU-AMI,Solidarity

RI

Solidarity

WVI

SCI

SiteType

Collective Centre

Locality

Municipality

Palestinian Camp

School

242 Most Vulnerable Cadastrals

1st and 2nd Most Vulnerable

3rd,4th and 5th Most Vulnerable

Main Cities

0

10

N

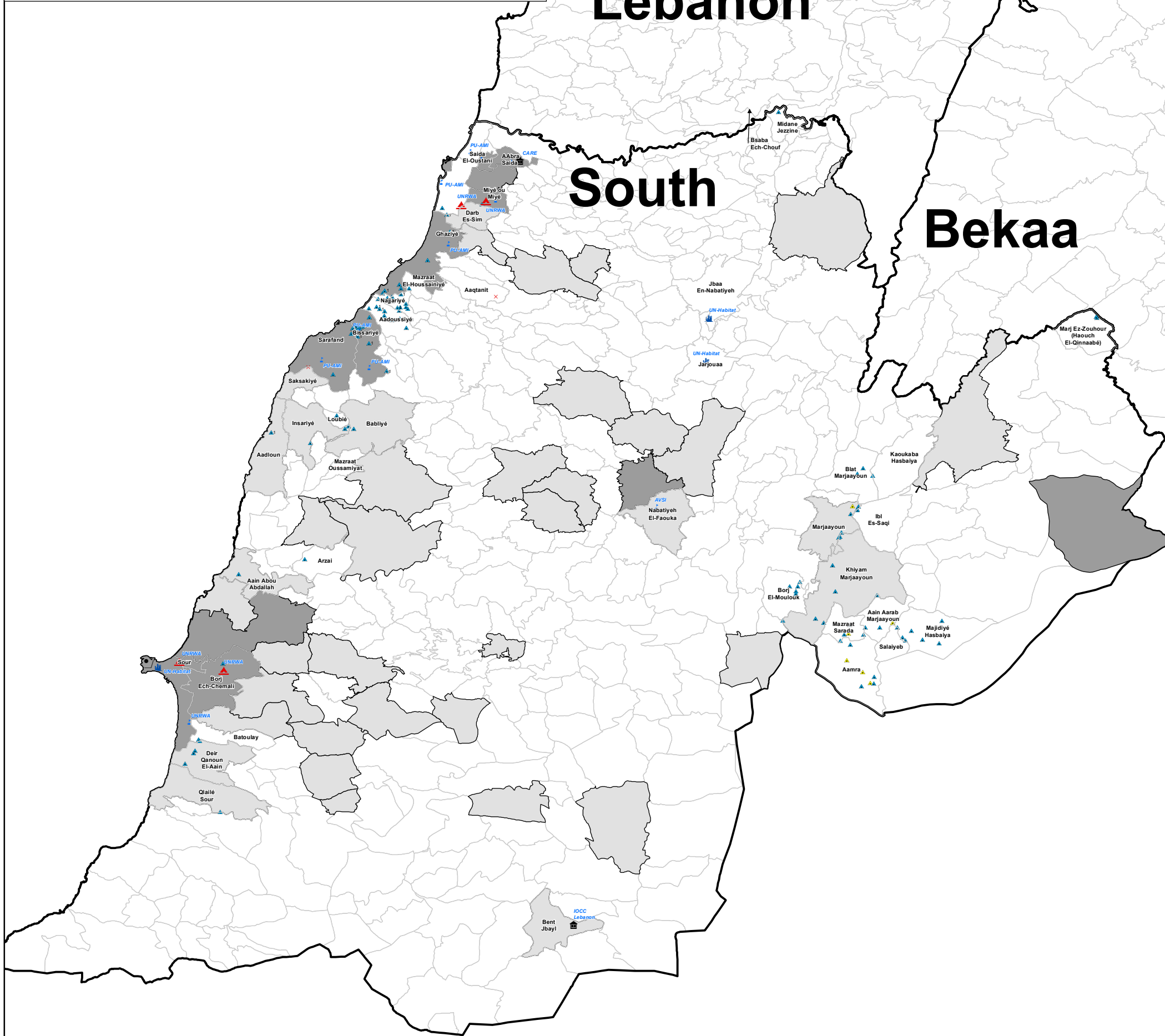
January 2015 South

Date: 3/19/2015



For more detailed partner information please use the WASH Sector CartoDB online map and or size A0 national map.

Beirut & Mount Lebanon



- Wash Partners in IS**

 - UNICEF
 - No Coverage
 - ACF
 - AVSI,CISP
 - CISP
 - CISP,PU-AMI
 - CONCERN
 - GVC
 - INTERSOS
 - LRC
 - Lebanese Red Cross
 - MEDAIR
 - Mercy Corps
 - Mercy Corps / Oxfam
 - Mercy Corps / WVI
 - NRC
 - NRC / ACF
 - OXFAM
 - PU-AMI
 - PU-AMI,RI
 - PU-AMI,Solidarity
 - RI
 - Solidarity
 - WVI
 - SCI

SiteType

 - Collective Centre
 - Locality
 - Municipality
 - Palestinian Camp
 - School

242 Most Vulnerable Cadastrals

 - 1st and 2nd Most Vulnerable
 - 3rd,4th and 5th Most Vulnerable
 - Main Cities

0 10



0 10

Date: 3/19/2015

For more detailed partner information please use the WASH Sector CartoDB online map and or size A0 national map.



-

