

SITUATION ANALYSIS

Social stability partners' activities and programs are already well underway throughout the sector, building on the work and results achieved in 2014. 10 new conflict mitigation mechanisms have been established (engaging 322 change agents, 57% women) and 13 youth peacebuilding initiatives have been launched, involving 148 youth from both Syrian and Lebanese communities (55% women), primarily through RET activities in Social Development Centers.

The sector's focus on supporting municipalities and other local governance institutions to build social stability is also off to a good start. While only two new community support projects have been implemented in January, partners have worked to identify new priority projects. MOSA and UNDP have thus completed 76 participatory needs assessments (Maps of Risks and Resources) in January, involving 1,316 host community members. 9 Social Development Centres, 6 Unions of Municipalities, and 143 municipalities are already benefitting from capacity building and technical support from partners to effectively address the crisis at the local level (primarily through UNHabitat Regional Technical Offices in Unions of Municipalities).

In order to promote conflict-sensitivity programming within the intervention, 132 staff of the public health system were trained on conflict sensitivity, and 3 conflict analysis reports were published to inform partners on the evolution of tensions. In particular, a report by Lebanon Support on conflict dynamics in the Bekaa highlighted how the tense security situation is fertile ground for exploitation of the most vulnerable groups, most notably the displaced Syrians, and minor conflicts hold the potential for facile escalation if no conscious mitigation efforts are made.

Next month, the sector will focus on finalizing the 'rapid tension assessment tool' to provide a harmonized, practical tool for partners across sectors to assess the impact of their programming on tensions. In terms of activities, the work of partners will very much switch towards completing ongoing municipal and community support projects addressing immediate sources of tensions within host communities.



FUNDING

(Required)

147.3 m

6.9%

of overall
LCRP request



PEOPLE

(In Need/Target)

242 (Communities in Need)

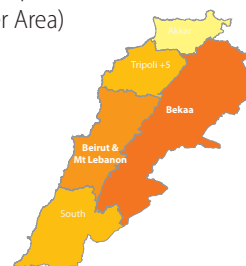
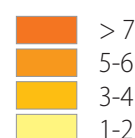
242 (Communities Targeted)



PARTNERS

(Number of operational partners per Area)

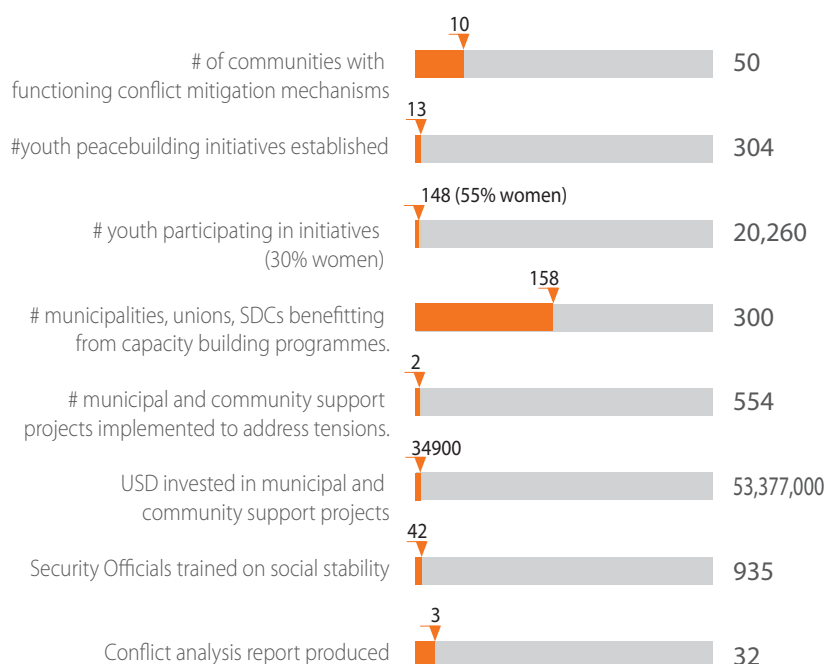
partner per area



PROGRESS AGAINST 2015 TARGETS

Month of January progress

Progress
- (grey)
January (orange)



Location of Social Stability activities reported in January

