



## Daily Report

**Planning and Preparedness:** On 2 March, the European Commission (EC) proposed a new [Emergency Assistance instrument](#). If agreed by the European Parliament and Council, €700 million will be made available to complement Member States' direct contributions to humanitarian response inside the EU. The mechanism would be managed by the EC's Department for Overseas Humanitarian Aid and Civil Protection (ECHO), and implemented by partners.

**Arrivals and Departures:** In Austria, asylum applications decreased significantly to 497 applications per week, while some 1,733, 1,229 and 820 applications were filed on average in the past three weeks respectively.

Swedish Minister for Justice and Migration, Morgan Johansson, announced that border controls will be extended for an additional 30 days until 8 April 2016; with the possibility of further extension.



## Situation at Border Crossings

In Turkey, 165 people were apprehended or rescued at the land and sea borders. In the former Yugoslav Republic of Macedonia, 27 people were returned to the Greek border. In Serbia, 130 people were not allowed by the Croatian Police to board trains to Croatia. Similarly, 27 people were returned to the Slovenian border from Austria.

## Critical Developments

Greek Prime Minister, Alexis Tsipras, stated in a media report, that the government will request all EU member states (at the European Council meeting to be held on 7 March in Brussels) to revise the relocation distribution system as a compulsory mechanism rather than a voluntary one.

According to an AFP report, NATO vessels deployed in the Aegean Sea are yet to begin operating as Turkish authorities did not allow the vessels to enter their territorial waters, despite requests from NATO operation's German command. According to Hurriyet Daily, Ankara officials strongly denied such allegations.

On 4 March, Turkish Foreign Minister, Mevlut Cavusoğlu, will meet Greek officials in Athens to discuss measures of enhanced coordination, ahead of the European Council meeting with Turkey in Brussels on 7 March.



## Average Daily Arrivals and Trends Greece

15-21 February  
**2,747**  
140% from previous week



22-28 February  
**2,538**  
-8% from previous week



**Condition of People:** In a [press release](#), the European Commission confirmed that the Greek authorities are in the process of returning 308 people to Turkey, noting that the European Union is increasing efforts to ensure that people who do not qualify for international protection in Europe will be returned to their countries of origin or transit.

The Deputy Director of Frontex, Berndt Korner, stated that the agency stands ready to provide further support to the Greek government regarding the return of people determined ineligible to receive international protection status, should Greek authorities request it.

## Challenges

In Greece, as people gather at the border crossing with former Yugoslav Republic of Macedonia (currently 17,500 refugees and migrants present in the North of the country) the authorities struggle to identify locations where temporary accommodation can be established. UNHCR stands ready to provide emergency required support.

## Response

During a meeting with local authorities, Greek Alternate Minister for Migration Policy, Yannis Mouzalas, predicted the current emergency situation will likely last for several years, with the possibility of more than 100,000 people remaining in Greece.

## Weather Headlines

Unsettled across the region with all places seeing rain that may turn heavy at times. Sea conditions will deteriorate between Turkey and the Greek Islands on Thursday night and persist throughout Friday. Becoming more settled across Greece over the weekend and early next week, but further rain is expected elsewhere.

29 February - 2 March  
**1,614**  
-36% from previous week



Monthly Average Daily Arrival  
March (as of 2 March)  
**1,386**  
-24% from previous month





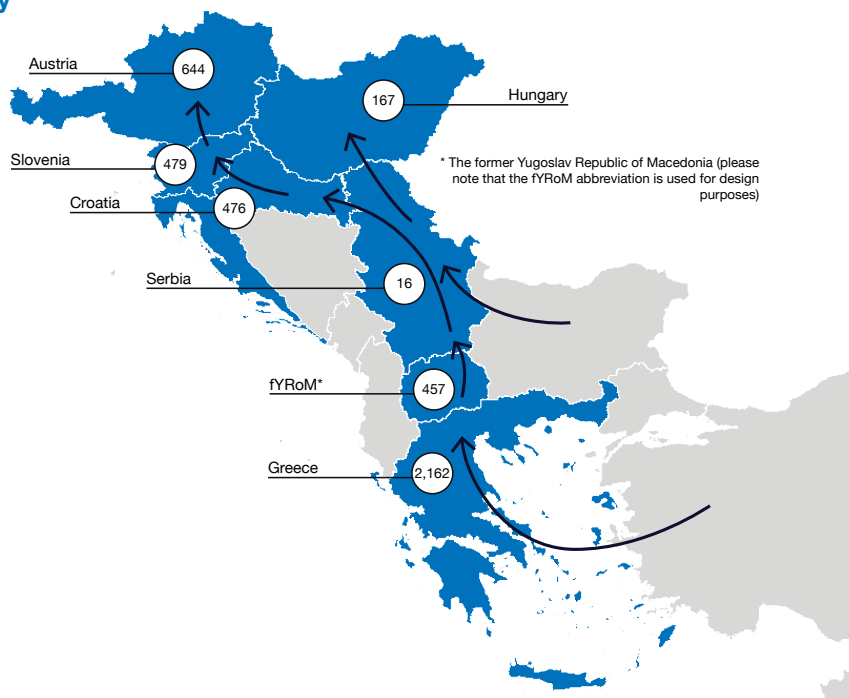
### Upcoming meetings/events

- European Commission President Visit to Greece and the Western Balkans, 1-3 March
- European Council meeting with Turkey, Brussels, 7 March
- European Parliament Plenary session, Strasbourg, 8 March (attended by UN High Commissioner for Refugees, Filippo Grandi).
- Justice and Home Affairs Council, Brussels, 10-11 March
- EU-Turkey Summit, Brussels, 17-18 March
- High-level meeting on global responsibility sharing through pathways for admission of Syrian refugees, Geneva, 30 March



### Estimated Arrivals per Country Yesterday

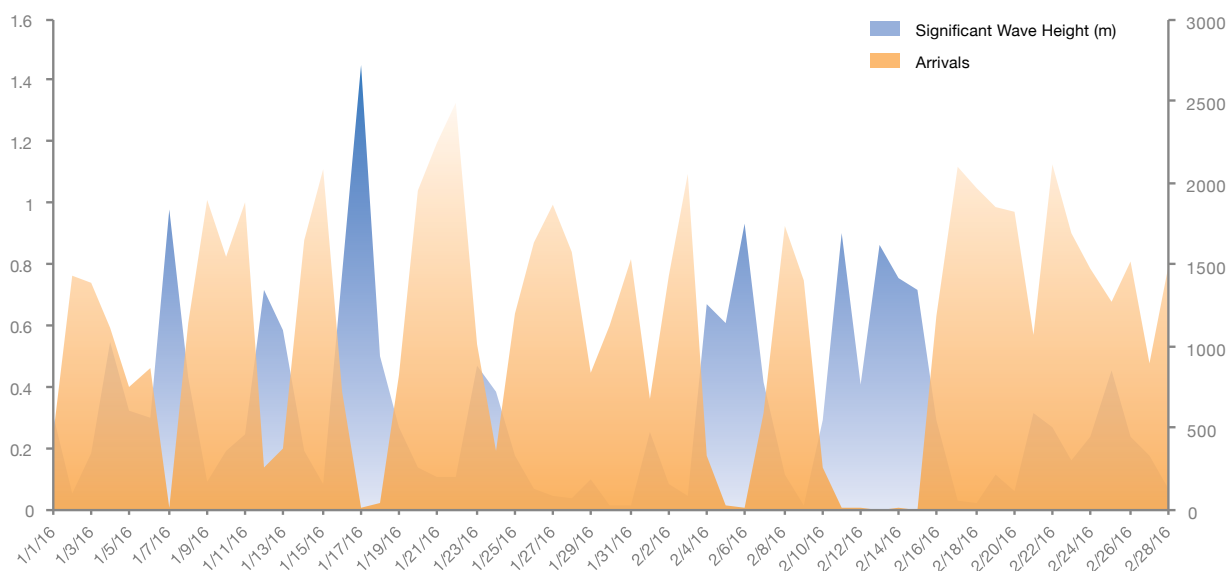
Greece	2,162
fYRoM*	457
Serbia	16
Croatia	476
Hungary	167
Slovenia	479
Austria	644



### Wave Height vs Arrivals to Lesbos

The graph highlights the historical correlation (from 1st January 2016 until present) between the average wave heights around Lesbos and number of registered arrivals to the island. The data shows a clear negative correlation: as the sea states become rougher, with increasing wave heights, the number of people travelling to Lesbos decreases. As sea states and wave heights reduce, the number of people travelling to Lesbos increases.

Applying this same negative correlation to forecast wave data allows us to make a forecast prediction on the number of people moving from Turkey to the Greek islands, giving a trend on whether these numbers will increase or decrease.





## Social Media

**Facebook Activity:** Facebook group [Are You Syrious?](#) posted a warning to their 15,500 followers (some of whom are volunteers, as well as refugees and migrants) to refrain from registering with OCB Immigration, a company allegedly offering resettlement options for refugees to Denmark, Canada, and Australia. The group stresses that refugees should only participate in resettlement programs conducted via UNHCR by national migration offices or large, well-known NGOs.

The [Channel 4 News](#) page posted drone footage from the Idomeni transit centre at the Greece-Macedonia border which shows the build-up of refugees and migrants. There are reportedly 25,000 people present.

**Twitter Activity:** [Frontex](#) announced that “34 Polish officers [are] to be deployed by #Frontex in March in Greece to assist in hotspots and patrols”.

### Current statistics for: #migrantcrisis

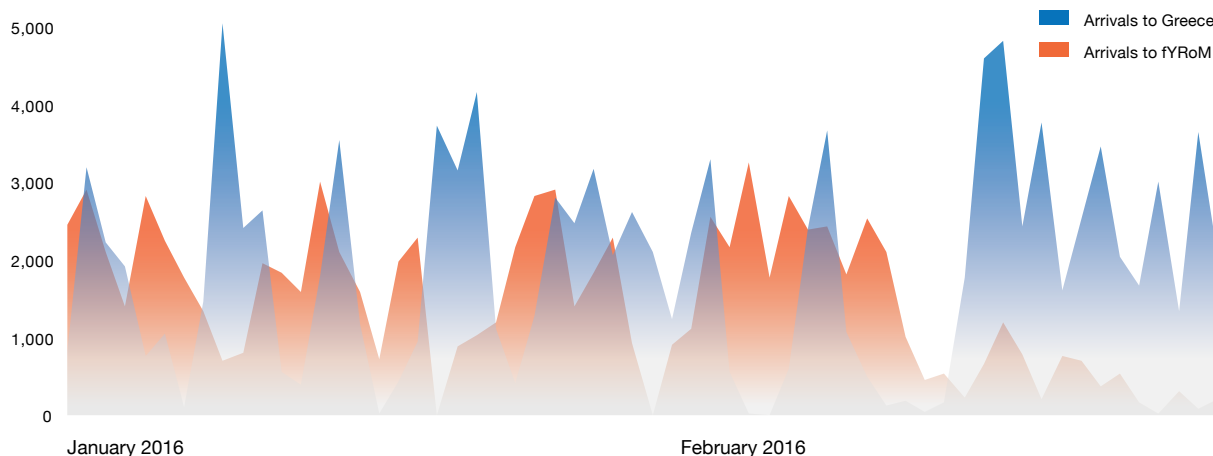
- 29 tweets, 63 retweets per hour
- Over 33,580 impressions per hour
- 30.77% of posts using #migrantcrisis originated from the US
- 19.83% of posts using #migrantcrisis originated from the UK

### Current statistics for: #refugeecrisis

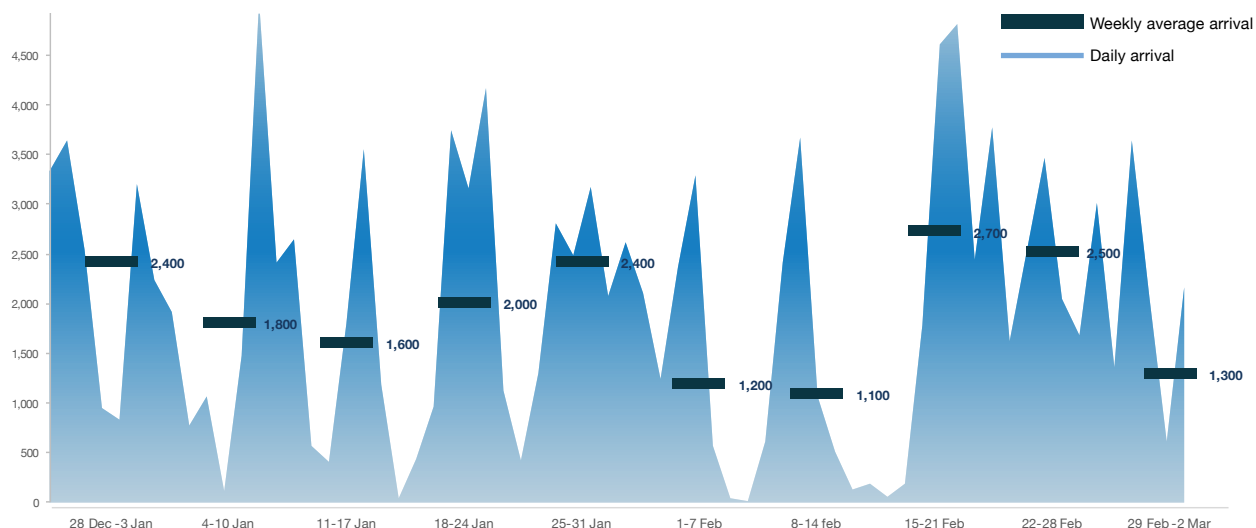
- 83 tweets, 225 retweets per hour
- Over 2.2 million impressions per hour
- 19.83% of posts using #refugeecrisis originated from the UK
- 2 February presented the highest amount of social media activity using #refugeecrisis, reaching an average peak of 1,700 individual tweets, 5,300 retweets and 6,178 impressions



## Arrivals to Greece vs Arrivals to fYRoM\*



## Daily and Weekly Average Arrivals to Greece 28 December to 2 March





## Weather Forecast Greece - Slovenia

Key locations crossed by refugees



## Weather Assessment

- Across the Greek Islands, southerly winds will increase this evening and through Friday, accompanied by heavy showers or thunderstorms. Past event analysis would suggest a significant reduction in arrivals to the Greek Islands on Friday as sea conditions deteriorate. The wind will ease from Saturday, but the wind may temporarily increase leading to some challenging sea conditions at times.
- Across mainland southeast Europe, a band of rain will continue to move across the region on Thursday night and Friday. Rain will be heavy at times which may lead to increasingly muddy ground conditions developing where large numbers of people are present on unpaved surfaces. Snow will be confined to higher ground mainly across Slovenia and Croatia. Through the weekend and early next week, it will remain unsettled across Serbia, Croatia and Slovenia with further rain. These unsettled conditions are likely to spread to Greece by midweek.



## Situation Overview



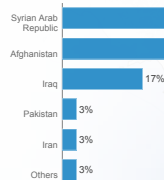


## Annex 1 Key Figures from the Portal

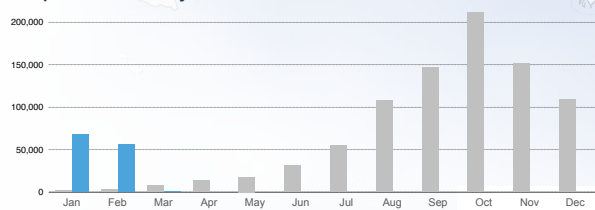
Increasing numbers of refugees and migrants take their chances aboard unseaworthy boats and dinghies in a desperate bid to reach Europe. The vast majority of those attempting this dangerous crossing are in need of international protection, fleeing war, violence and persecution in their country of origin. Every year these movements continue to exact a devastating toll on human life.

### Top-10 nationalities of Mediterranean sea arrivals

Top-10 nationalities represent **100%** of the sea arrivals based on arrivals since 1 Jan 2016



### Comparison of monthly Mediterranean sea arrivals



**124,004** arrivals by sea in 2016

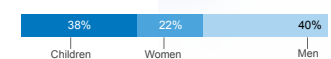
© Last updated 1 Mar 2016

856,723 arrivals by sea in 2015

**91%** of arrivals come from the world's top 10 refugee-producing countries

Sea arrivals in 2016  
Main routes through the Mediterranean

### Demographics based on arrivals since 1 Jan 2016



\*Serbia (AND KOSOVO: S/RES/1244 (1999))  
The boundaries and names shown and the designations used on this map do not imply official endorsement or acceptance by the United Nations

### Following the humanitarian crisis in Europe: Estimated daily arrivals

