

Weekly Report



Key Figures

Mediterranean

211,385

arrivals by sea in 2016*

2,856

dead/missing in 2016*

Trends on sea arrivals

Sea arrivals to Greece remain on an average of 50 per day since April, with some days with no arrivals, and other days with a peak up to 200 people a day. Between 6 and 12 June, 4,118 refugees and migrants arrived in Italy by sea, bringing the total of sea arrivals to Italy to 52,678. 47,851 persons arrived to Italy in the first five months of 2016, compared to 47,463 disembarked in the same period of 2015.

Key developments

Updated of the regional Refugee and Migrant Response Plan

On 10 June, UNHCR and partners [launched](#) an update of the regional [Refugee and Migrant Response Plan \(RMRP\)](#) involving 60 partner organizations and covering the eastern Mediterranean and Western Balkans route. The RMRP has been revised to take into account the new circumstances on the ground following border closures along the Western Balkans route, and the entry into force of the EU-Turkey statement. In this context, UNHCR and humanitarian partners have redefined their engagement from a response primarily targeting people on the move, to focusing on a static population in Greece and on protection activities in countries in the Western Balkans. The financial requirements to implement the plan have been adjusted to reflect the change in circumstances. They currently stand at almost 670 million US dollars for 2016, of which contributions of 328.8 million US dollars have been received.

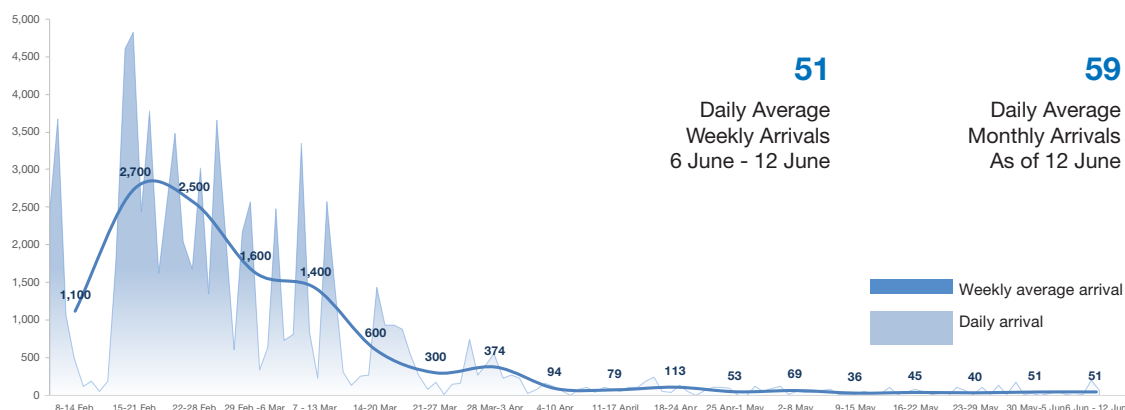
The pre-registration exercise on mainland Greece

A [joint UNHCR-EASO-Hellenic Asylum Service press release](#) announced the launch of the pre-registration exercise on 8 June. This operation aims to pre-register applications for international protection from the approximately 49,000 people currently residing in accommodation sites in the mainland, offering in addition the possibility to request for family reunification or relocation to another EU Member State for those qualifying. This exercise is supported financially by the European Commission. UNHCR and the European Asylum Support Office (EASO) are supporting the implementation of the pre-registration exercise. The process is open to people who entered Greece from 1 January 2015 and prior to 20 March 2016. As of 12 June a total of 1,830 people were registered and 3,270 people received a wrist-band prior to pre-registration. 83 unaccompanied children were identified and best interest assessments have been conducted. In addition, eight separated children were identified. Two pre-registration hubs were established in Thessaloniki and in Elliniko in Athens. Child friendly spaces were installed in both locations and dry food packages were distributed by UNHCR.

UNHCR High Level Mission to Thessaloniki

UNHCR's Assistant High Commissioner for Operations, the Director of the Division of Emergency, Security and Supply, and Director of the Regional Bureau for Europe, accompanied by the UNHCR Representative in Greece visited Thessaloniki on 9 June. Their two-day mission included assessments of sites in Nea

Daily and Weekly Average Arrivals to Greece 8 February to 12 June 2016



* data.unhcr.org/mediterranean as of 15 June 2016

Key Figures

Greece

358

**Total Weekly
Arrivals to
Greek Islands**
6 June - 12 June

51

**Daily Average
Arrivals to
Greek Islands**
6 June - 12 June

Italy

4,118

**Total Weekly
Arrivals to Italy**
6 June - 12 June

588

**Daily Average
Arrivals to
Italy**
6 June - 12 June

Kavala, Derveni warehouse, Oreokastro warehouse, Softex warehouse, Diavata, Lagkadikia, and the pre-registration site at the Regional Asylum Service in Thessaloniki. The mission main objective was to look at UNHCR's operational engagement in view of the decongestion of Eidomeni and the urgent need to provide support to and work with the authorities in the newly established sites. Several high-level meetings were also held in Athens with Greek authorities.

Situation on the islands

Conditions in the Reception and Identification Centres (RICS) on the Greek islands continue to be dire, particularly for people with specific needs. On Lesbos, families with specific needs who were transferred to the open facility Kara Tepe have begun to spontaneously return to Moria asking to be transferred to facilities with better living conditions and where cash assistance is distributed by some NGOs. On Samos, 128 refugees and migrants arrived during the reporting period, while no additional accommodation space is available. There are currently 1,063 people present in the RIC in Samos, which has a capacity of 636. As a result, new arrivals are staying in tents,

which has led to increasing need for communal water and sanitation facilities and protection risks for the population.

Situation at the border between Serbia and Hungary

A significant number of refugees and migrants continue to accumulate at the border between Serbia and Hungary. Between 6 and 12 June, there were on average, 600 people, mainly women and children, awaiting admission into the "transit zones" in Hungary, without appropriate shelter or sanitary conditions. UNHCR, UNICEF and the Red Cross continued to distribute food and non-food items to people present at the border in Horgos I and Kelebija. Some 213 individuals were admitted in the "transit zones" in the past week. Tensions remained in the pre-transit areas along the Serbian border. In addition, in relation to people trying to cross irregularly to Hungary, reports about pushbacks, physical abuse and harassment by Hungarian police forces and military personnel have increased in recent weeks. UNHCR has raised concerns about the increase in reported incidents with the Hungarian police.

Arrivals and People Present* per Country 13 June 2016



01	Greek Islands Arrivals: 37 Present*: 8,449
	Greece Mainland Arrivals: 56 Present*: 48,593
02	fYRoM** Arrivals: 0 Present*: 372
03	Serbia Arrivals: 300 Present*: 1,800
04	Croatia Arrivals: 0 Present*: 70
05	Hungary Arrivals: 189 Present*: -
06	Slovenia Arrivals: 0 Present*: 296
07	Austria Arrivals: 171 Present*: -

* Number of people present in Greece and estimated number of people currently present in countries along the previous route not applying for asylum
** The former Yugoslav Republic of Macedonia (please note that the fYRoM abbreviation is used for design purposes)

Updated on returns, relocation and resettlement

On 8 June, eight people from Afghanistan, Iran and Algeria were returned from Chios to Cesme, Turkey. On 9 June, 13 Syrian nationals (6 men, 3 women and 4 accompanied children) were returned from Chios to Adana Turkey. The return took place by air, with an aircraft chartered by Frontex. The returnees had not submitted asylum applications. An [official press release](#) by the Ministry of Citizen Protection stated that since the beginning of the year, on the basis of the bilateral Greek-Turkish Readmission Protocol, 1,048 nationals of third countries have been returned to Turkey. On the basis of the EU-Turkey Readmission Agreement, 36 Turkish nationals have been returned to Turkey and on the basis of the EU-Turkey Joint Statement, 462 third country nationals of various nationalities have been returned to Turkey.

In the past week, 25 asylum-seekers were relocated from Italy to the Netherlands, bringing the total number of people relocated from Italy to 775. So far, 1,420 asylum seekers have been relocated from Greece and 775 from Italy to 19 EU Member States and Switzerland (European Commission data, as of 10 June. See [here](#) for additional details).

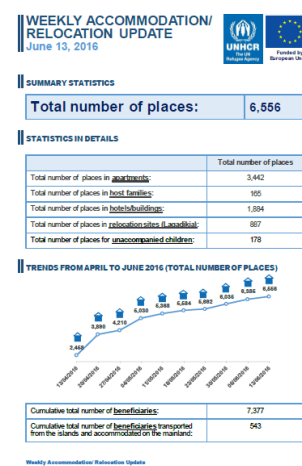
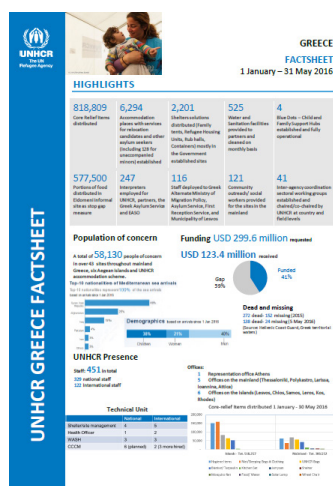
EU developments

On 7 June, the European Commission released new instruments on migration, including an [Action Plan](#) on the integration of third-country nationals in the EU, a [proposal for a Directive](#) (that could apply to

beneficiaries of international protection under certain conditions) regarding the conditions of entry and residence of third-country nationals for the purposes of highly skilled employment, and a [Communication on establishing a new Partnership Framework with third-countries](#). The Communication aims at streamlining the EU's action and resources in its cooperation with third countries, through tailor-made partnerships with key countries of origin and transit (Libya, Jordan, Lebanon, Tunisia, Western Africa and the Horn of Africa, amongst others). Saving lives at sea, enhanced returns, enabling migrants and refugees to "stay closer to home" and avoid dangerous journeys are mentioned as short-term priorities, while addressing the root causes of irregular migration and forced displacement is set as a long term priority.

At the [Justice and Home Affairs Council](#) of 9-10 June, EU Home Affairs Ministers discussed the implementation of the EU-Turkey Statement, developments concerning the Central Mediterranean, the European Border and Coast Guard and visa liberalization. They [emphasized](#) that returns to Turkey should be stepped up with the EU's assistance, and highlighted their support to the Greek authorities in their efforts to address the obstacles in the implementation of returns to Turkey. In addition, Ministers were [urged](#) to accelerate the resettlement of Syrian refugees from Turkey under the framework of the 1 for 1 scheme, and prepare for the Voluntary Humanitarian Admission Scheme. They were also urged to speed up the relocation of asylum-seekers from Greece and Italy.

Key Documents from the Portal



Highlights