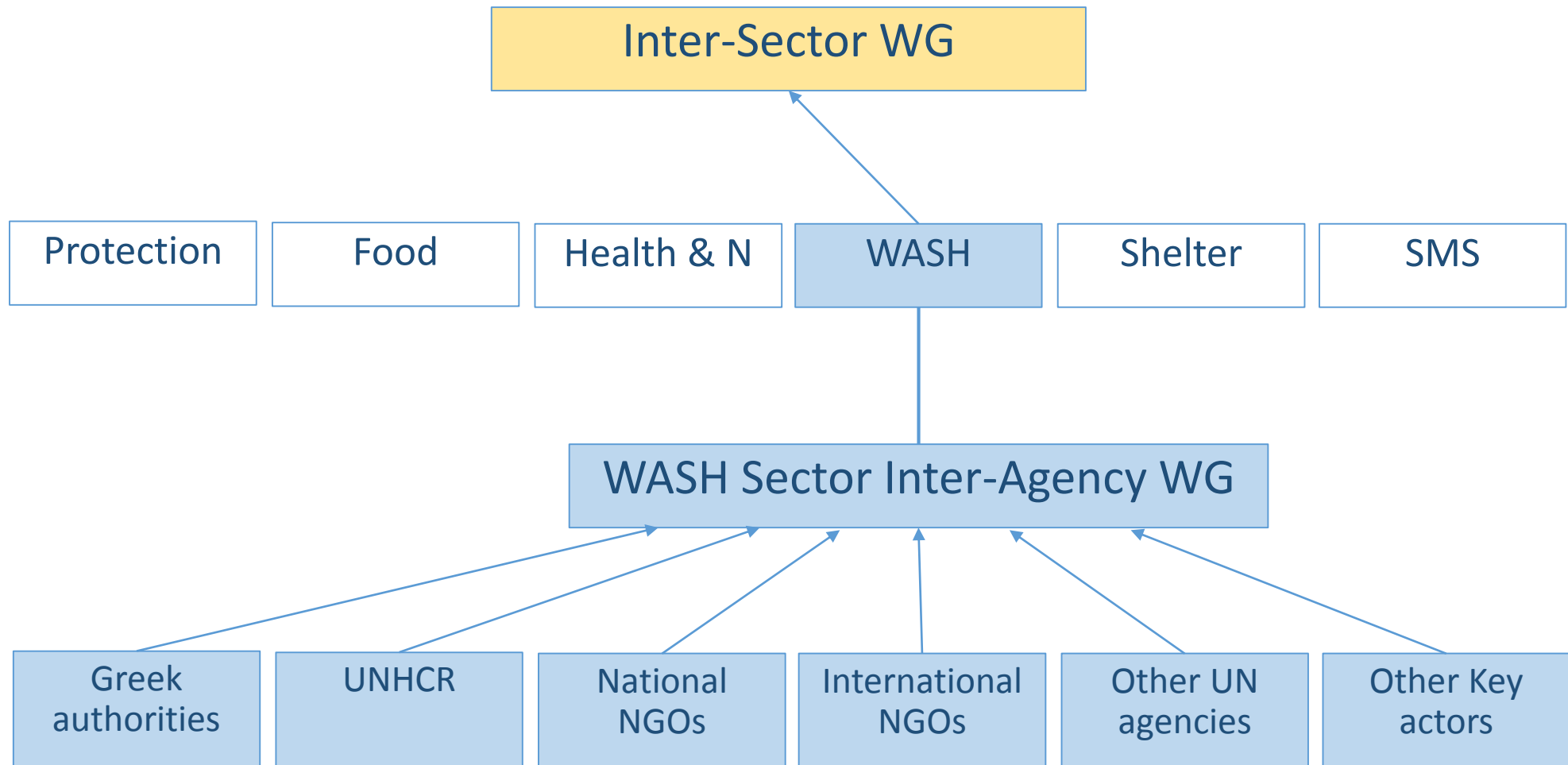


All Greece
WASH SECTOR
Inter-Agency Working Group

Kick-off meeting

15 March 2016

UNHCR Office / Tagiapiera / Athens



WASH Sector Inter-Agency WG

- Scope:** The WG is a national level body, bringing together senior WASH Technical Actors from Key Agencies, across all Greece.
- Role:** Provide strategic direction and guidance, across all Greece, in support of the Government.
- Purpose:** Promote a nationwide effective service delivery in WASH, ensuring that WASH requirements are covered and up to minimum standards.
- Functions:** Strategic planning, ensuring consistency, promoting standards, promoting best practices, implementing SOPs, building capacity...

Agenda / Minutes

1. WG ToR
2. Current WASH Capacity / Resources
3. Foreseeable WASH Capacity Needs
4. Tracking mechanisms
5. Sites (camps) map of 12.03.2016
6. Ownership principle
7. Standardized equipment/approach
8. Example of Best Practices in the maintenance of chemical toilets
9. Next WASH WG / Inter-Sector WG

1. WG ToR

- To do:** Draft the WG's ToR.
- By who:** The ToRs will be drafted by the ToR WG made up of IRC (Natasha) / OXFAM (Bob) / SP (Carlos)
- By when:** Draft to be circulated by Tuesday 22nd March
- How:** Email exchange
- Support:** UNHCR (Ralph) to mail examples of ToRs to Natasha

2. Current WASH capacity across Greece

Resources: All actors to submit to Ralph and Maria Antouaneta what resources they currently have (on the ground, people, pipeline), ideally by March 25th so that we can present them at the next WG on March 29th.

Data: UNHCR to check which already existing data-collection/management system we can use.

IM: UNHCR to create and circulate a web-based template (if possible Google.doc).

3. Future WASH capacity needs

Assessments: UNHCR has created an Inter-Agency Assessment Registry on the UNHCR portal, where assessments will be shared with all actors.

All new assessments to be sent to the Inter-Agency Assessment Registry, via Maria Antouaneta.

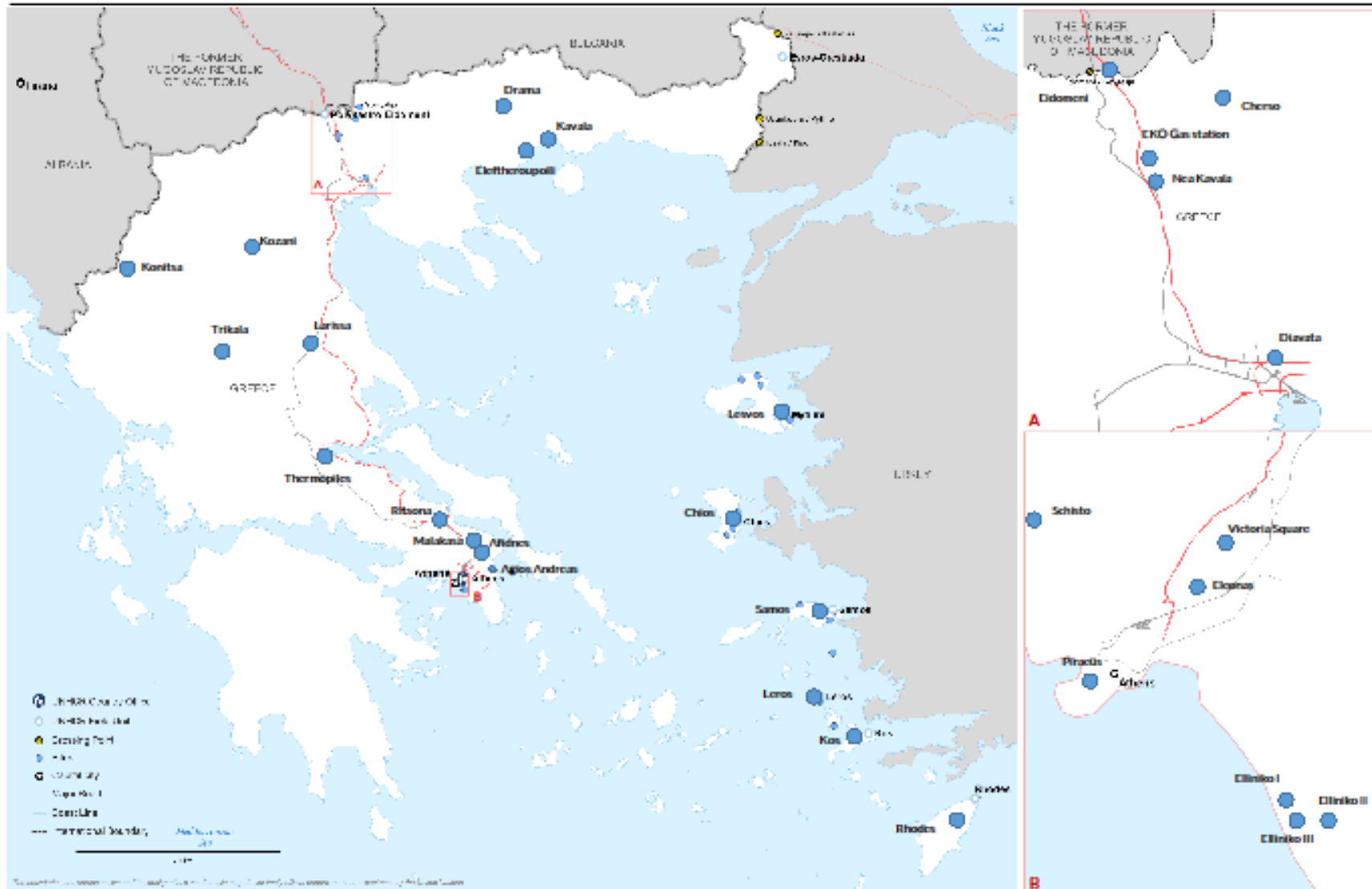
Templates: UNHCR to look at the WASH Cluster website and download templates for future assessments.

4. Tracking Mechanisms

- In progress:** In January 2016, UNHCR created a WASH Tracking Matrix, which is currently being used in various sites.
- Purpose:** Monitor who is doing what, where.
- Reporters:** One focal point per site.
- Example:** Natasha to complete the WASH Tracking Matrix for Lesbos and circulate to the WG.
- Future:** All sites to use the Matrix, which will act as a tracking mechanism for WASH across all Greece.

5. Sites (camps) map of 12.03.2016

Europe Refugee Emergency
Site locations in Greece
As of 12 March 2016



6. Ownership principle

The WG recommends to have one WASH actor per site, and possibly also one per group of sites.

Based on the map on the previous slide, the WG will determine which agency works in which sites, taking into consideration:

Geography: Simplifying logistics on the ground.

Resources: Concentrating resources to meet needs.

Involvement: The level of involvement desired by the actors.

7. Standardized equipment / approach

Example of a prefabricated toilet/shower container.

Containers come in three parts:

- Solar panels on the roof (for showers)
- Prefab container (showers, toilets, urinals)
- Base (holding tank) if no connection to sewer lines or soaking pits

The idea is to replace chemical toilets with prefab containers a.s.a.p.



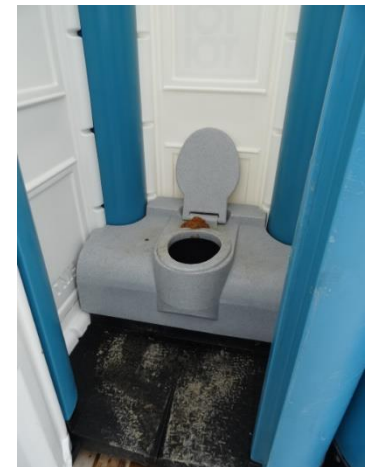
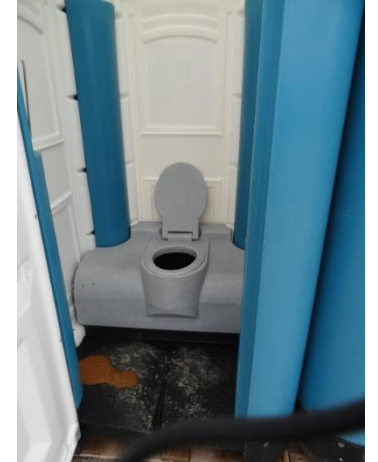
8. Best practices in the maintenance of chemical toilets (shared by MSF)

The cleaning service by truck included with renting chemical toilets is not sufficient, as illustrated in the scenario below:

- Chemical toilets rented, 2 cleanings per day foreseen (one at 09:00 and one at 17:00)
- Truck comes at nine, finishes cleaning by 9:30
- At 10:00 a child goes into a toilet, creating situation in top picture. At 10:15, an adult squats on the chemical toilet, creating situation in bottom picture.
- Since the truck comes back at 17:00, the situations in both pictures remain for almost 7 hours. Beneficiaries will not be using the facilities.
- For that reason, it is necessary to employ toilet attendants to keep the facilities clean. 1 person/ 10 toilets is seen as a good number

It is advisable to equip all chemical toilets with watering cans, to be used for anal cleansing.

For situations such as in the pictures, it is advisable to equip the cleaners with little shovels. They can be used to scoop the feces into the toilet bowl. Otherwise there is a risk that the feces will be swept out of the toilet by the truck's pressure hose, polluting the space outside the latrine.



Next WASH WG / Inter-Sector WG

WASH WG: Tuesday 29th March / 14:00 – 16:00 / UNHCR Tagiapeira

Inter-Sec WG: Friday 17th March / 08:30 / Hellenic Red Cross

Jane Vogt Evensen from NCA (Norwegian Church Aid) and Antonis Bofilios from Apostoli/IOCC will represent the WASH WG at the Inter-Sector WG.

Chair: IRC is looking at funding a full-time WASH officer to co-chair the WG.

Contacts

Contacts:

See distribution list

UNHCR:

Ralph BLAND: bland@unhcr.org / 694

Maria Antouaneta SARANTI: sarantim@unhcr.org