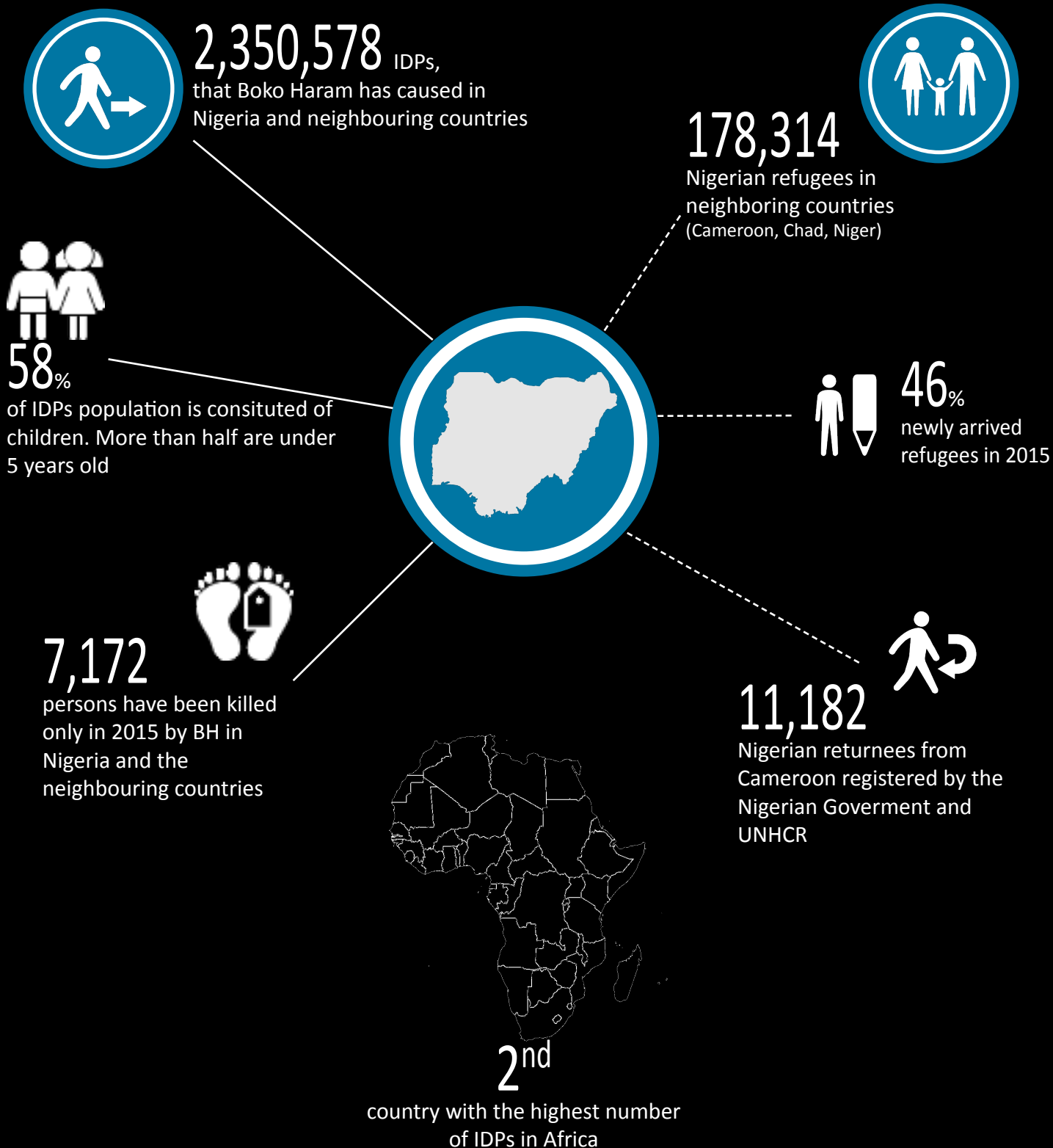


NIGERIA SITUATION IN NUMBERS

since 2012

September 2015



Source: UNHCR, ACLED, IOM DTM round V, IDMC.

For more information contact: **Liz Ahua**, Regional Refugee Coordinator, ahua@unhcr.org; **Annette Rehrl**, Snr. External Relations Officer, rehrl@unhcr.org; **Anna Minuto**, Snr. Information Mng. Officer, minuto@unhcr.org